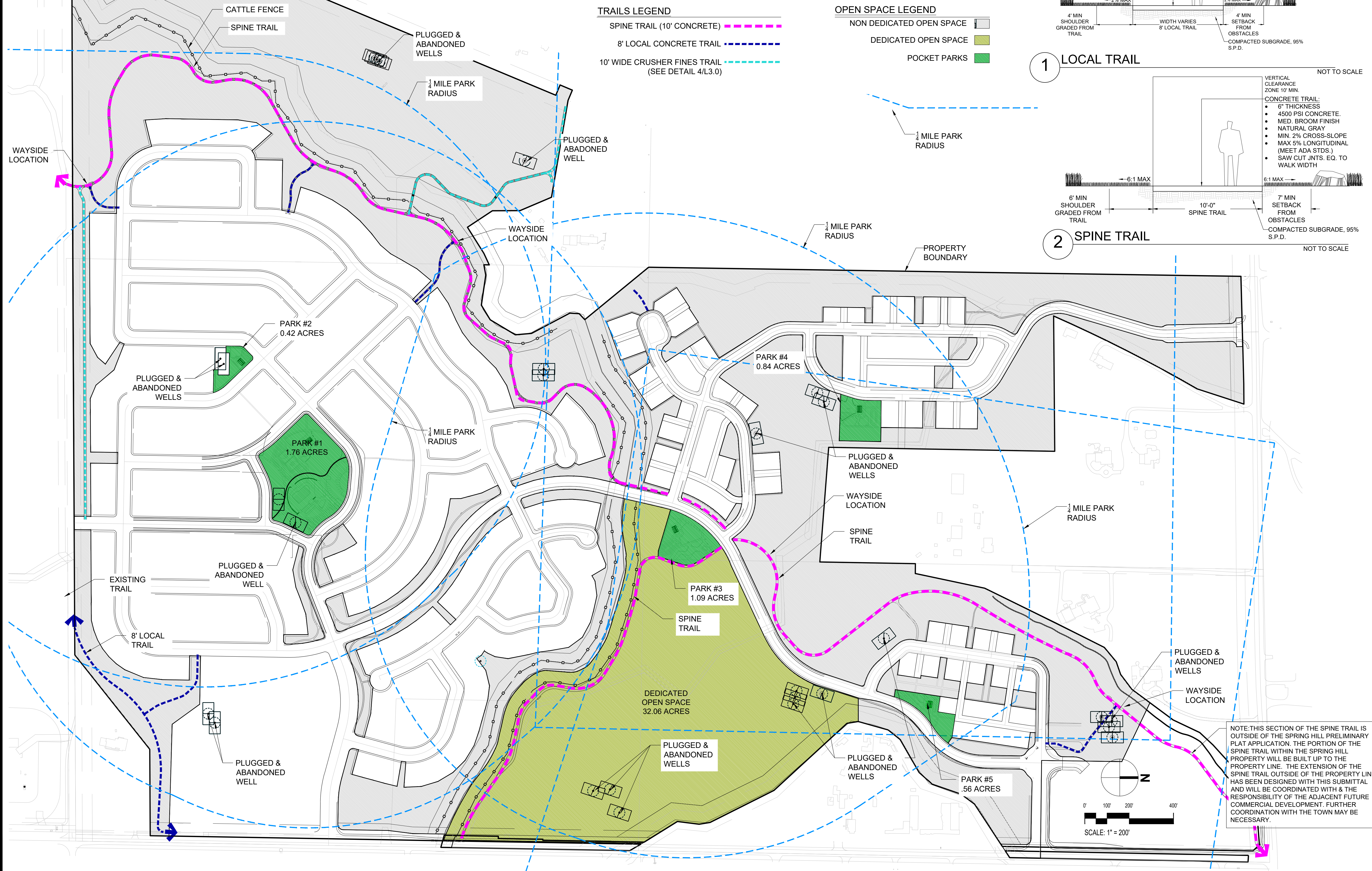


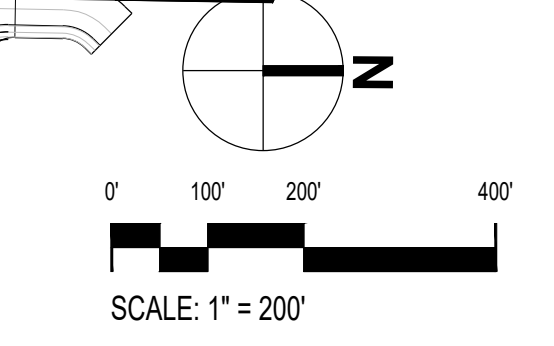
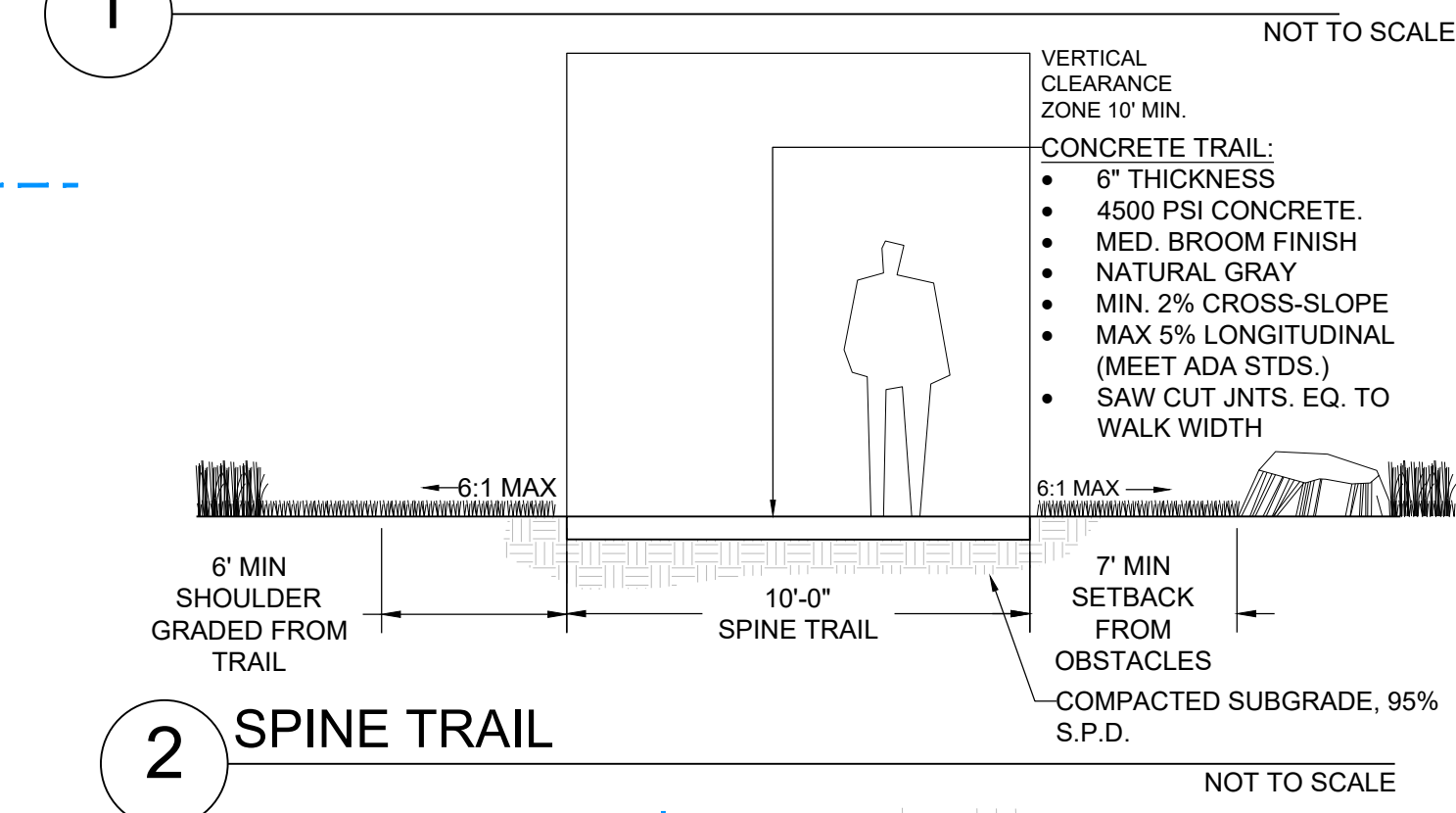
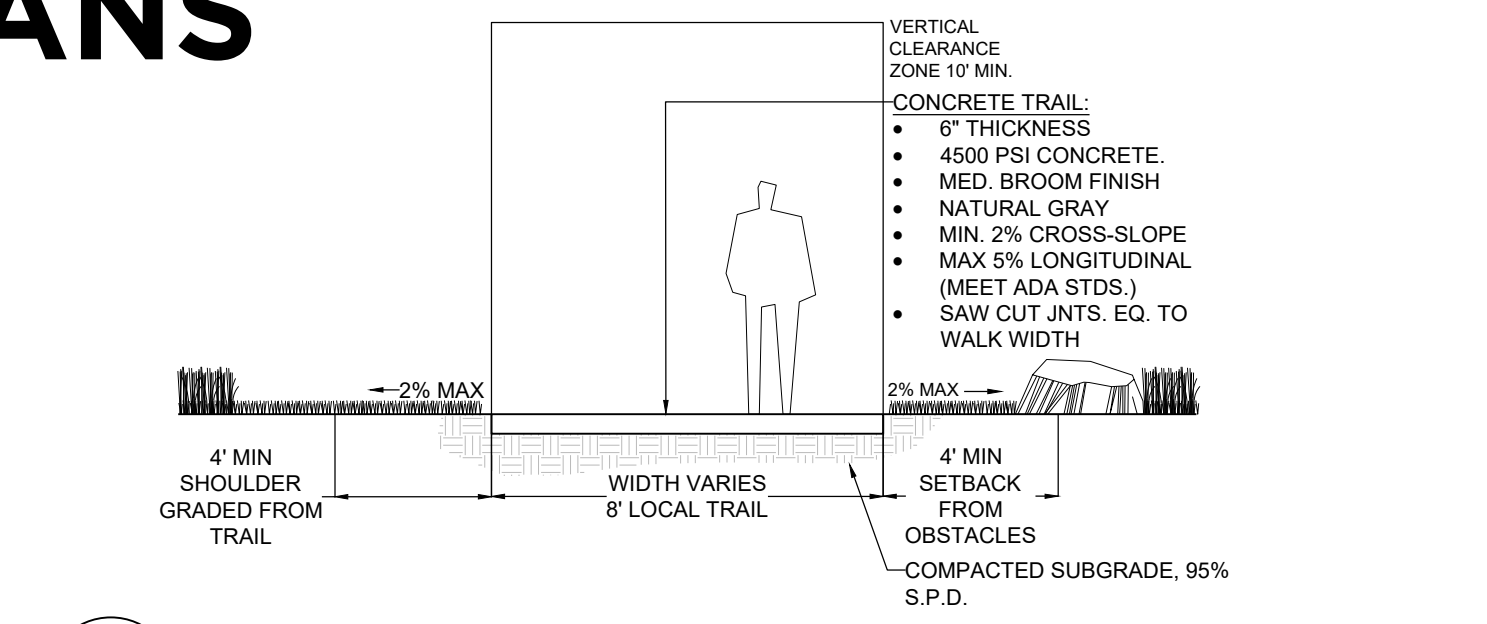
SPRING HILLS PRELIMINARY LANDSCAPE PLANS

A PORTION OF SECTION 6, TOWNSHIP 1 NORTH, RANGE 68 WEST OF THE 6TH P.M.,
TOWN OF ERIE, COUNTY OF WELD, STATE OF COLORADO
299.512 ACRES -632 LOTS/49 TRACTS
PP-001264-2021



- TRAILS LEGEND**
- SPINE TRAIL (10' CONCRETE) ---
 - 8' LOCAL CONCRETE TRAIL ---
 - 10' WIDE CRUSHER FINES TRAIL (SEE DETAIL 4/L3.0) ---

- OPEN SPACE LEGEND**
- NON DEDICATED OPEN SPACE
 - DEDICATED OPEN SPACE
 - POCKET PARKS



NOTE: THIS SECTION OF THE SPINE TRAIL IS OUTSIDE OF THE SPRING HILL PRELIMINARY PLAT APPLICATION. THE PORTION OF THE SPINE TRAIL WITHIN THE SPRING HILL PROPERTY WILL BE BUILT UP TO THE PROPERTY LINE. THE EXTENSION OF THE SPINE TRAIL OUTSIDE OF THE PROPERTY LINE HAS BEEN DESIGNED WITH THIS SUBMITTAL AND WILL BE COORDINATED WITH THE RESPONSIBILITY OF THE ADJACENT FUTURE COMMERCIAL DEVELOPMENT. FURTHER COORDINATION WITH THE TOWN MAY BE NECESSARY.

Prepared For
E5X MANAGEMENT
7353 SOUTH ALTON WAY
CENTENNIAL, CO 80112

Land Planning
people creating spaces
pcs group inc. www.pcsgruopco.com
#3, 8-180 independence plaza
1007 16th street, denver, co 80265
1.303.531.4905 f.303.531.4908

Engineering
CML
a Westwood team
10333 E. Dry Creek Rd. Suite 240
Englewood, CO 80112
Tel: 720.482.952
www.cml.net
westwoodps.com

SPRING HILL
ERIE, COLORADO
PRELIMINARY LANDSCAPE PLANS

Drawn by:	BEM
Checked by:	JP
Submittal Date:	3.15.2020
Date:	9.3.2021
Know what's below. Call before you dig.	12.3.2021
	3.04.2022
	1.16.2023
	8.8.2024
	6.9.2025

Sheet Name
PARK, OPEN SPACE AND TRAILS PLAN

Sheet Number
L0.6