



# Extended Producer Responsibility (EPR) Discussion

**Town of Erie Study Session**

**Feb. 3, 2026**

Emma Marino, Sustainability & Water Conservation Specialist

Eryka Thorley, Sustainability Manager

# Tonight's Agenda

- Erie waste overview
- Extended Producer Responsibility (EPR) overview
- EPR applications in Erie
- Council discussion
- Next steps



**How EPR Supports Colorado's Communities**

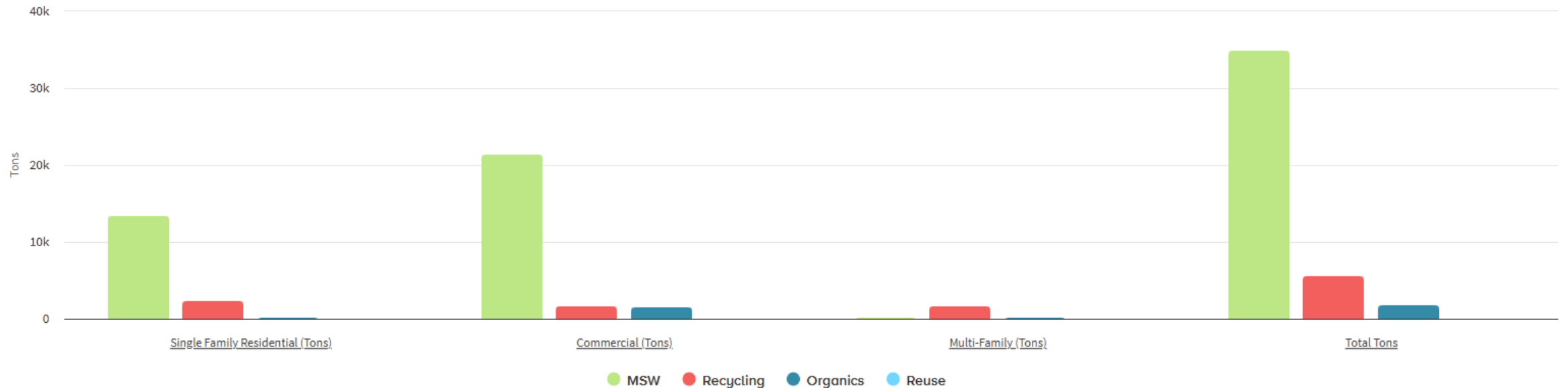


# Erie Waste Overview

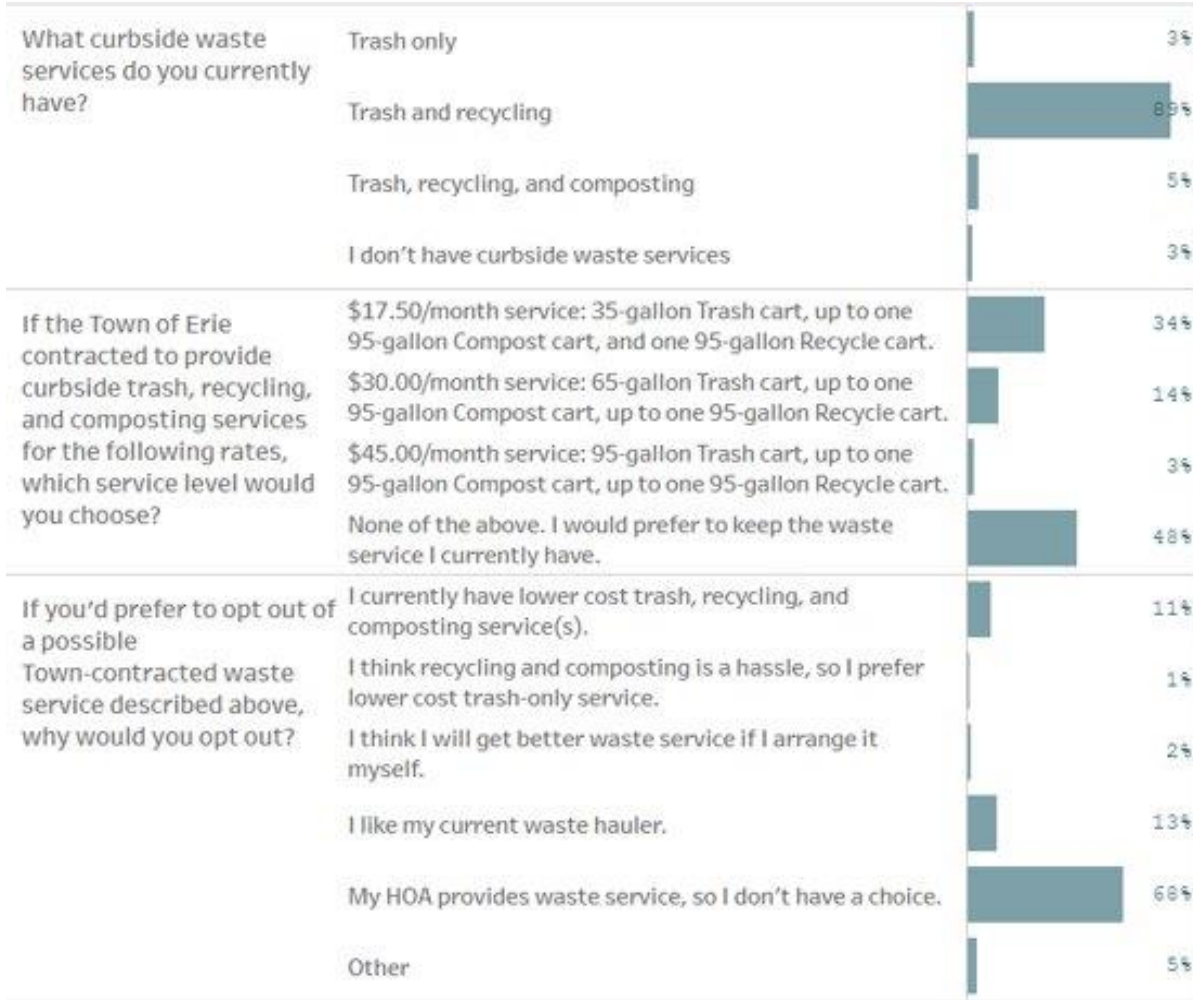
- Five residential haulers within the Town (One Way, Republic, Waste Connections, Western Disposal, WM)
  - Compost haulers (Wompost + Compost Colorado, Scraps)

- Home to three landfills:
  - Front Range Landfill
  - Denver Regional North (CLOSED)
  - Denver Regional South (CLOSED)

Diversion Report  
2024



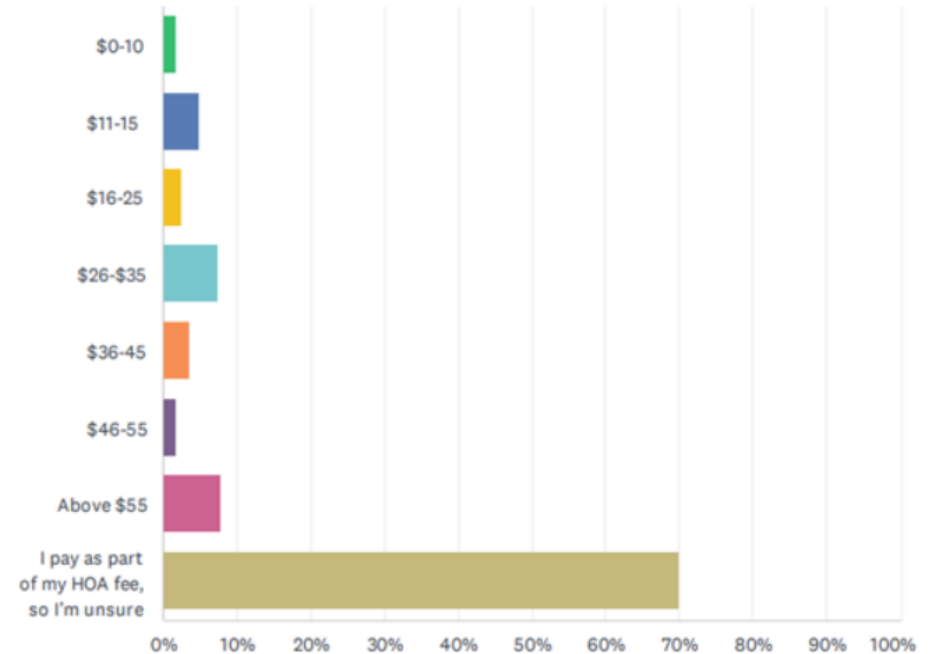
# 2023 Community Survey Results:



# '24/'25 Informal Questionnaire Results:

Q15 How much do you pay for the services provided by your hauler?

Answered: 226 Skipped: 8



# Extended Producer Responsibility (EPR)

- On June 3, 2022, the Producer Responsibility Program for Statewide Recycling Act, [House Bill 22-1355](#), was signed into law. It sets up a Producer Responsibility program that **requires companies that sell products in packaging materials and paper products to fund a statewide recycling system to recycle those materials.**
- Related companies were required to form an independent non-profit organization, called a **Producer Responsibility Organization (PRO)**, to coordinate, fund, and manage this statewide recycling system.
  - Circular Action Alliance (CAA) was appointed as the PRO in Colorado.

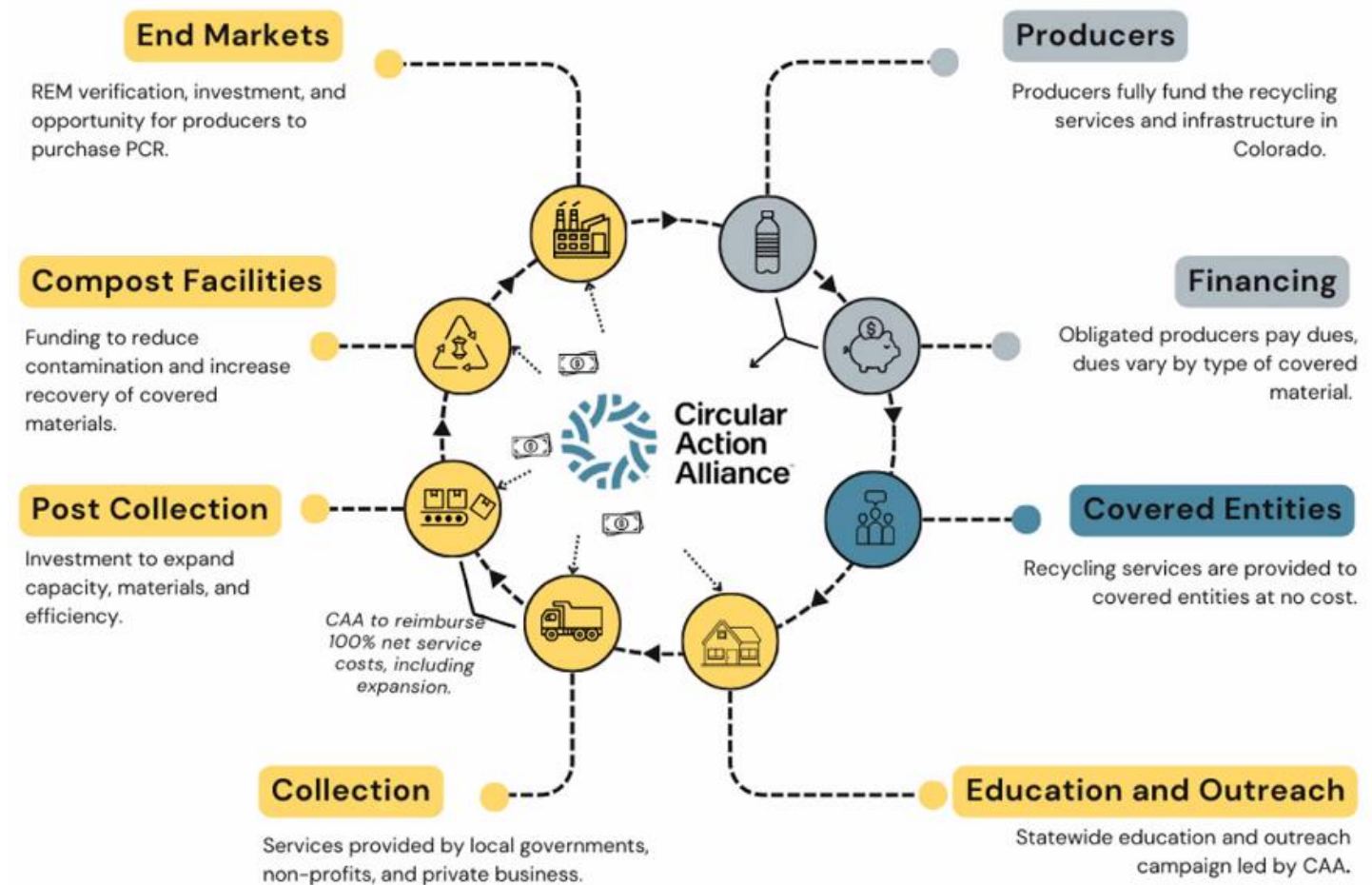


# Extended Producer Responsibility (EPR)

- EPR aims to make recycling as convenient as trash service and gradually introduces free recycling services for residents, with improvements rolling out over time.
- The program covers packaging and paper products and will offer a standardized list of recyclable materials collected statewide.
- Benefits for Colorado include less landfill waste, no-cost recycling access for residents, local business growth and education for residents.

# Circular Action Alliance (CAA)

- As the PRO, CAA is responsible for developing and implementing a Program Plan for managing covered products.



Colorado EPR Flow Diagram



## HOW EPR WORKS IN COLORADO



### PRODUCER RESPONSIBILITY

Companies selling packaging and paper in Colorado pay dues based on the type and amount of materials they provide. These dues fund the full recycling system, including collection, processing, education and infrastructure.



### CENTRALIZED, STATEWIDE SYSTEM

CAA Colorado will coordinate statewide recycling by partnering with local governments, private providers and community groups. The plan standardizes what materials are recyclable and makes recycling convenient as trash collection.



### EXPANDING ACCESS AND SERVICES

#### **Residential & Non-Residential:**

The program begins with residential recycling and adds schools, government buildings, public areas, hospitality venues and small businesses by 2030.

**Rural Investments:** Funds will expand or upgrade recycling infrastructure in rural and underserved regions.

#### **Compostable Packaging:**

The plan supports composting for certified compostable packaging and provides education to reduce contamination and boost recovery.

**Reuse and Refill:** Incentives for producers to offer at-home refill packaging and innovative designs mean more sustainable choices for consumers.



### EDUCATION AND OUTREACH

A key focus is public education, showing people what to recycle, why it matters and how to avoid contamination. Outreach will build on Colorado's successes and be tailored to diverse communities through targeted campaigns, events and partnerships.



### INNOVATION AND IMPROVEMENT

CAA Colorado will regularly review and update the program, using data and public feedback to improve recycling rates, add new materials and support innovative solutions like reusable packaging and increased use of recycled content in new products.





# What does this mean for Erie?

## Council

- Erie will receive reimbursement for Town Recycling Center materials that are currently on the covered materials list of the program plan - single stream recycling (SSR) and cardboard.
- In the future, receive reimbursement for Town facility SSR and cardboard hauling.
- The Town will receive likely \$2-3 per household to support education and outreach to residents and later to businesses.

## Residents & HOAs

- Confirm that your hauler will be participating in EPR.
- Confirm what you pay for recycling to date.
- Opportunity to explore yard waste/organics collection at your home or HOA.

*\*\*\*Recycling reimbursement to haulers may not be seen until late 2026.*



# Council Discussion

What questions do you have about EPR?

- How can we best support Council with updates about EPR?
  - Including new waves of participation (i.e. businesses, new covered materials).
- Possible hauler licensing to require EPR participation.



# Next Steps

- Staff will continue to monitor, communicate, and participate in EPR rollout.

**HOW IMPLEMENTATION BEGINS**

Initiatives will roll out **gradually**, giving communities and businesses time to adjust to the new system.

			
Reimburse for existing curbside service	Boost participation where access exists	Enhance systems and recycle more items	Build capacity in underserved areas

# Questions?

- For Erie specific: [SustainableErie@erieco.gov](mailto:SustainableErie@erieco.gov)
- For State level: [eprcomments@state.co.us](mailto:eprcomments@state.co.us)
- For CAA: [coloradoinfo@circularaction.org](mailto:coloradoinfo@circularaction.org)

