

ERO Resources Corporation
835 E. 2nd Avenue, Suite 314
Durango, CO 81301

Phone: 303.830.1188

E-mail: slarmore@eroresources.com



REQUEST COST PROPOSAL

Historical Architectural Survey Reports

Town of Erie Historical Preservation Advisory
Board

Project Number P25-1013



PREPARED FOR

Town of Erie
645 Holbrook Street
Erie, Colorado 80516



PROPOSAL ISSUED JULY 17, 2025

CULTURAL RESOURCES COST PROPOSAL WORKSHEET

COST BREAKDOWN					
TASK CODE()					
Estimated Task Start Date -> or Estimated Task End Date ->					
POSITION	Person	2025 RATE			
Resource Lead Principal I	Sean	\$225			
Resource Lead Principal II	Kathy	\$216			
CR Principal Investigator	Kathy/Jon	\$201			
Sr. CR Specialist	Jon	\$157			
Project CR Specialist I	Kate/Marcus/Thad	\$124			
Project CR Specialist II	Ian	\$114			
Project CR Specialist III	Shay/Justin/Marie	\$105			
Staff CR I	Michelle/Tiana/Cc	\$101			
Staff CR II	Cait / Tristan / Tyr	\$87			
Staff CR III	Devan/Mark	\$79			
Technician	Seasonal	\$68			
Arch Historian I	Leslie/ Jen	\$137	1		
Arch Historian II	Madeline	\$119	16	3	
Arch Historian III	Emily	\$99	16	3	
Graphics Specialist	David	\$143			
GIS Specialist I	Wendy/David/Gar	\$142			
GIS Specialist II	Marcus/Ian/Gage	\$118	2	2	
Technical Editor	Kay	\$118			
Technical Editor	Kathy M.	\$65			
Admin	Est. .25 hrs / month	\$98			
Clerical		\$84			
LABOR HOURS					
TASK LABOR COST					
TOTAL LABOR COST					
DIRECT COSTS		RATE			
ITEM					
QR Editor	Kathy M.	\$60			
Trimble GPS		\$125	1		
Data Collector		\$50			
Field Equipment	daily charge	\$10			
Radiocarbon date (UGCA's)		\$10	1		
Charcoal (\$450) /		\$450			
Per square mile/s		\$30			
File Search PDF	Reports (1-3 \$20/	\$20			
File Search PDF	Reports +10 \$10Q	\$100			
Copies-B/W		\$0.15			
Copies-Color		\$0.30			
Car rental	8 days	\$600			
Per Diem	Fed rate	\$59			
Travel day (.75 F/L		\$44.25			
Lodging	Adjust as needed	\$110			
ORV	Per day	\$30			
Mileage	IRS rate	0.665	144		
DIRECT COSTS					
ERO Fee on ODC's					
TOTAL DIRECT COSTS					
TOTAL COST	% of total amount				
ERO TOTAL					
Assumptions:					

ERO Resources Corporation
835 E. 2nd Avenue, Suite 314
Durango, CO 81301

Phone: 303.830.1188

E-mail: slarmore@eroresources.com



REQUEST FOR PROPOSAL

Historical Architectural Survey Reports
Town of Erie Historical Preservation Advisory
Board
Project Number P25-1013



PREPARED FOR

Town of Erie
645 Holbrook Street
Erie, Colorado 80516



PROPOSAL ISSUED JULY 17, 2025

July 31, 2025

Mr. Harry Brennan
Senior Planner
Town of Erie
Phone: 720-745-1022
Email: hbrennan@erieco.gov

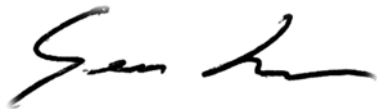
RE: P25-1013 - Historical Architectural Survey Reports

Dear Mr. Brennan,

ERO Resources Corporation's is pleased to provide our Quote and Qualifications to complete a Historical Architectural Survey. We appreciate the opportunity to assist you with this project and look forward to hearing from you. I can be reached at slarmore@eroresources.com or (970) 749-6446.

Please contact me if you have any questions or concerns regarding this proposal and cost estimate.

Sincerely,



Sean Larmore
Principal

Attachments

Contents

Qualifications 1

Experience 4

Project Goals, Concept, and Critical Issues..... 7

Project Schedule and Timeline..... 8

Quality Control..... 8

PROPOSAL

TOWN OF ERIE, COLORADO

HISTORICAL ARCHITECTURAL SURVEY REPORTS

JULY 31, 2025

QUALIFICATIONS

ERO FIRM CAPABILITY

ERO Resources Corporation (ERO) is a Colorado corporation founded in 1981 and a recognized leader in environmental, cultural, and historic resource consulting throughout the Intermountain West. Based in Denver with satellite offices in Durango and Grand Junction, Colorado, our diversified staff includes cultural and historic resource specialists, planners, and scientists working together to create innovative solutions that balance community development with protection of both the built and natural environment. Our cultural and historic resource specialists are skilled in multiple disciplines ranging from archival research, public interpretation, architectural inventory, and archaeological investigations to Library of Congress–level resource documentation.

ERO provides a broad range of services, including all levels of survey — from reconnaissance surveys to intensive-level inventories of archaeological and architectural resources — as well as the interpretation of historic archival resources into standardized forms for public interpretation and for coordination with local, state, federal, and tribal agencies.

ERO’s historians and planners assist clients with documenting and managing historic properties and with public interpretation and outreach.

FAMILIARITY WITH TOWN OF ERIE

The ERO Team brings recent and relevant experience working with and working in the Town of Erie (Erie). We know the landscape, resources, history, and organizations in the Town of Erie as well as Weld and Boulder County. Our current and recent work in Erie includes the following projects:

- Schofield Farm Open Space Development
- Erie 4 Corners

We also know the History Colorado staff and their grant programs. Our project team has successfully completed multiple context and survey projects funded by grants and reviewed and accepted by History Colorado. Our team is confident in our ability to successfully and smoothly complete grant-funded projects in partnership with Erie and History Colorado.

ERO History and Capacity

Years in business: 44
Staff: 97
Locations: Denver, Durango, Grand Junction, Boise
Vehicles: 8 Toyota Tacomas
Other equipment: Trimble GPS, GIS, and specialized field equipment, available as needed

- Products and Services**
- Environmental planning
 - Biological resources
 - Cultural resources
 - National Environmental Policy Act compliance
 - Geographic Information System (GIS) and graphic design
 - Geosciences and remediation

www.eroresources.com

PROJECT TEAM

ERO is pleased to present the following key personnel, including Jennifer Wahlers, Senior Architectural Historian, who will serve as Project Manager and Lead Historian assisted by Leslie Moore, Architectural Historian and Historian, along with Architectural Historians Maddie Westrom-Simons and Emily Ortiz. Our key personnel meet the Secretary of the Interior's (SOI) Qualifications for their assigned roles. Key personnel resumes are included as attachments.

JENNIFER WAHLERS, M.H.P., PROJECT MANAGER

Jen has nearly 20 years of experience in historic preservation analysis, research, and federal compliance. She began her career in the nonprofit sector before transitioning to the Colorado Department of Transportation where she worked as a historian. Jen later transitioned to consulting where she gained experience in managing and completing grant-funded local preservation contexts, studies, and surveys. She has extensive experience researching buildings, conducting small- and large-scale surveys, and crafting eligibility determinations following State Historic Preservation Office (SHPO) standards.

LESLIE MOORE, M.A., ARCHITECTURAL HISTORIAN AND HISTORIAN

Leslie is experienced in cultural resource management and public history, and focuses on projects requiring in-depth historical research. Overseeing all facets of site documentation, application of the National Register of Historic Places (NRHP) evaluation criteria, and report production, Leslie performs all classes and phases of survey and investigation of cultural resources related to Sections 106 and 110 of the National Historic Preservation Act (NHPA), State Register Act, and local regulations. Leslie's work includes conducting historic building evaluations, cultural resource surveys, file and literature reviews, reconnaissance surveys, and extensive archival research. She exceeds SOI qualifications to conduct work in the fields of history and architectural history and has completed fieldwork in counties across Colorado. Leslie is experienced in drafting Colorado State Register of Historic Properties (SRHP) nominations and developing creative interpretation projects such as curriculum, museum exhibits, and websites.

MADDIE WESTROM-SIMONS, B.A., ARCHITECTURAL HISTORIAN

Madeline Westrom-Simons is an architectural historian and historian with eight years of experience in cultural resource management and historic preservation. Since joining ERO in October 2024, Madeline has conducted historic building evaluations, cultural resource surveys, reconnaissance surveys, and extensive archival research. She has completed fieldwork in counties across Montana and Florida and participated in site documentation, NRHP evaluation, and adaptive reuse planning, along with report writing.

EMILY ORTIZ, M.A., ARCHITECTURAL HISTORIAN

Emily is an architectural historian experienced in cultural resource management and historic preservation. She conducts architectural surveys, evaluates historical sites, and documents buildings with a variety of architectural styles for development and local agency projects. Her work includes authoring nominations for the NRHP and managing surveys to assess project impacts on historical sites. Emily collaborates with stakeholders to meet preservation standards, lending her experience to navigate diverse environmental contexts.

OTHER KEY TEAM MEMBERS

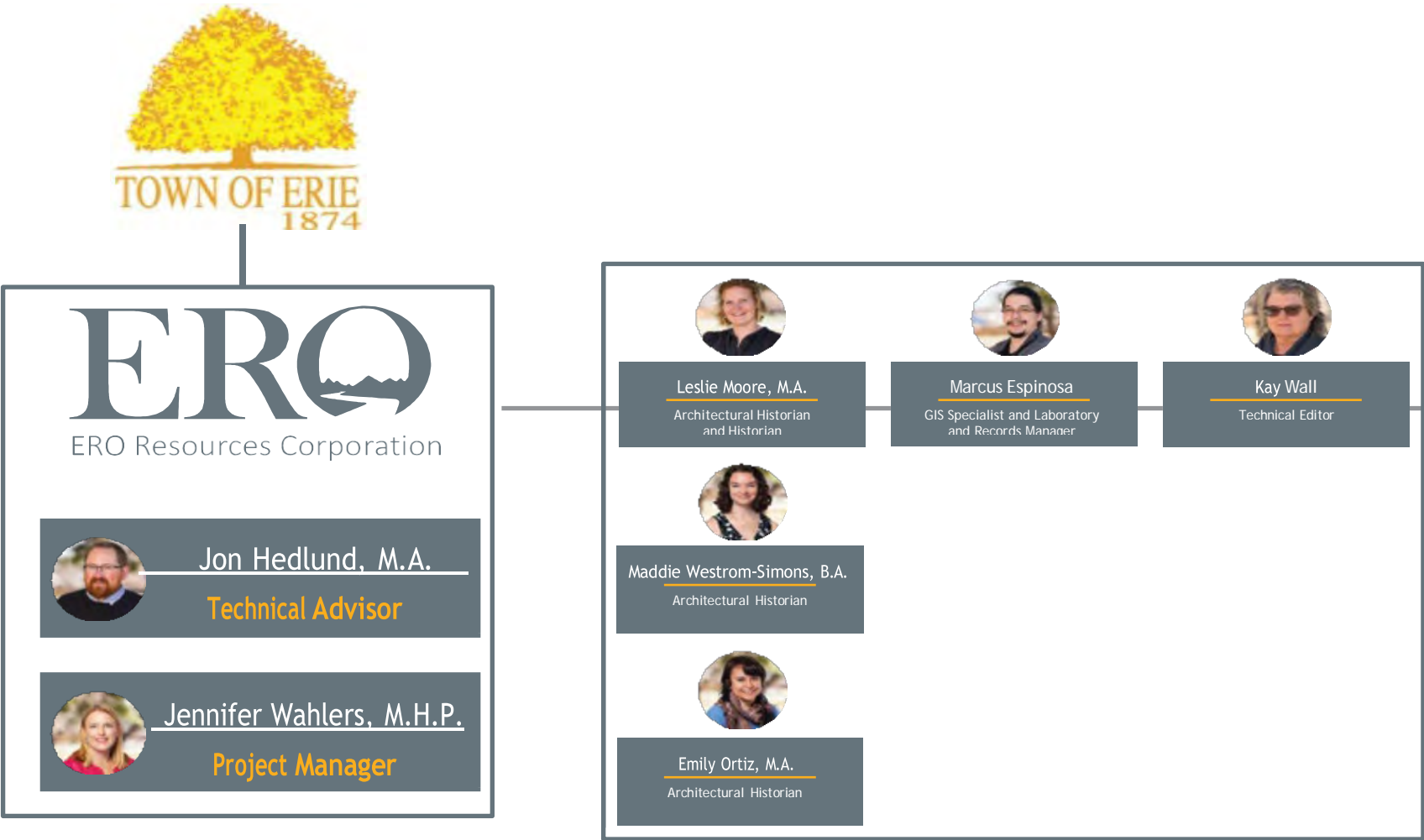
- Jon Hedlund, Denver Cultural Resource Manager
- Marcus Espinosa, GIS Specialist and Laboratory and Records Manager
- Kay Wall, Technical Editor

STATEMENT OF AVAILABILITY

ERO affirms resource availability during the stated period of performance.

EXPERIENCE

TEAM MEMBER MATRIX



RELEVANT PROJECT EXAMPLES AND LIST OF CLIENTS

Over the past 20 years, ERO and our team of historians have successfully completed dozens of historic compliance projects and local agency-based projects that have included extensive survey and documentation of a variety of historic resource types. Many of these projects have occurred in Erie. The following examples of past and current projects provide more detail of our team's experience and capability to complete this project.

SCHOFIELD FARM OPEN SPACE DEVELOPMENT

In 2024, Erie proposed to develop areas of the Schofield Farm Open Space with funding from the Land and Water Conservation Fund. Because the funds required compliance with Section 106 of the NHPA, ERO was contracted to conduct a Class III cultural resource survey of Schofield Farm Open Space. ERO documented a historic farm complex and an irrigation ditch and developed determinations of eligibility and effects.

Location: Boulder County, CO.

Relevance: ERO's recent documentation of the Schofield Farm Open Space in 2024 shows our history working with and in Erie, as well as an understanding of the history of the community.

Contact: Luke Bolinger, Community Partnerships and Special Projects Manager, Erie, 303-926-2796, lbolinger@erieco.gov.

ERIE 4 CORNERS

On behalf of Erie, Toll Brothers, Inc. contracted ERO to perform a cultural resource file and literature review as part of a development submittal for the 4 Corners property in Erie. Erie required a cultural, archaeological, and historical resource report and protection plan as part of the submittal. To assist the client with this requirement, ERO conducted a Class I file and literature review of the project area.

Location: Weld County, CO.

Relevance: The project team's experience with the project further exemplifies ERO's experience in Erie and the surrounding area.

Contact: Greg Saia, Senior Entitlement Manager, Toll Brothers Inc., 303-242-0865, gsaia@tollbrothers.com.

PRINCE LAKE SPILLWAY NO. 1 IMPROVEMENT PROJECT

Boulder County Parks and Open Space obtained a grant from the Federal Emergency Management Agency to improve an existing spillway. ERO was contracted to complete the cultural resource compliance work for the project, which expanded the documentation for the Schofield/Distel Farm to include the Prince Lake Reservoir and dam. ERO completed the site documentation and required consultation materials for the successful completion of the project.

Location: Boulder County, CO.

Relevance: The project team's experience with the project further exemplifies ERO's experience in Erie and the surrounding area.

Contact:-Steven Smith, Senior Water Resources Engineer, Applegate Group, Inc., 303-452-6611, SteveSmith@applegategroup.com.

ERIE PARKWAY

In a prior position, Project Manager Jennifer Wahlers completed the Section 106 compliance work for the Erie Parkway project. As a part of this project in 2017, Jennifer developed the area of potential effects and documented a segment of an irrigation ditch in Erie to complete U.S. Army Corps of Engineers cultural resource compliance.

Location: Weld County, CO.

Relevance: This project was in Erie and required local historical research. It demonstrates the project team's familiarity with the area and its historic context.

Contact:-Jennifer Gorek, RockSol Consulting Group, Inc., gorek@rocksol.com, 970-590-3562.

CITY OF CORTEZ SURVEY OF AUTO/TOURISM PROPERTIES

In 2023, while working at ARCH Professionals, LLC, Project Manager Jennifer Wahlers developed a historic context for the post-war era in Cortez, Colorado. She also surveyed and researched 17 properties related to the automobile and tourism era in Cortez including drive-ins, service stations, gas stations, and motels. This project was funded by a Certified Local Government Grant from History Colorado.

Location: Montezuma County, CO.

Relevance: The survey of Automobile and Tourism properties in Cortez, Colorado demonstrates the Project Manager's familiarity with completing similar grant-funded projects that result in the development of historic contexts and the survey, research, and documentation of nearly two dozen resources.

Contact:-Jennifer Gorek, RockSol Consulting Group, Inc., gorek@rocksol.com, 970-590-3562.

PROJECT GOALS, CONCEPT, AND CRITICAL ISSUES

ERO will rely on its team of experienced historians and architectural historians to research the history of Erie and the 25 properties to be surveyed as a part of this project. The team will use previous studies to help inform the project and ensure there are no redundancies with past survey efforts and contextual research. Following a public kick-off meeting and public engagement, ERO historians may include new scope items, which will involve conducting an outreach survey inquiring about specific site histories, archival research, and field survey work. ERO is well versed in History Colorado's Colorado Cultural Resource Survey Manual, experienced in conducting complex surveys of dozens of properties, and will complete Architectural Inventory Forms (#1403) for the 25 selected properties in Erie. Per History Colorado guidelines, this survey effort will include photographs, topographic maps, and sketch maps for each property and their associated features. Simultaneously, a historic context will be developed. A draft of the report and site forms will be submitted for review by Erie, the Erie Historic Preservation Advisory Board (EHPAB), and History Colorado. Edits and comments will be addressed before finalizing the report and presenting it to the community in a final public meeting.

Completing a project such as this presents several challenges, including data management, mapping, and scheduling. ERO is particularly well equipped to handle the potential challenges posed by surveying 25 resources at once because of our proprietary database for collecting information while in the field, which then directly populates the #1403 site forms. This ensures site-specific information is organized appropriately and helps reduce time in the field and back in the office translating any notes taken in the field. Mapping concerns are addressed by our in-house GIS staff that are experienced in mapping complex cultural sites. Four experienced on-staff historians who can work concurrently ensure project deadlines are met.

To successfully complete the survey of 25 of Erie's historic resources, ERO will work closely with the EHPAB and local members of the community to learn stories and histories that often are not documented in traditional archival repositories. Local community members possess a wealth of information on the history of their town and the role historic resources play in creating a unique sense of place. It will be important to solicit and document whatever information the EHPAB and citizens can contribute in the architectural inventory forms for each resource.

To ensure costs remain reasonable, several tasks will be allocated to more junior staff. The senior staff members will oversee this work for quality assurance. This will ensure that costs are kept lower while still maintaining a high-level product. ERO has established cost estimate worksheets that aid in project scoping and ensuring that cost estimates are as accurate as possible.

PROJECT SCHEDULE AND TIMELINE

Task	Estimated Completion Date
Notice to Proceed	December 2025
Advance of Grant	December 2025
Project Team Kick-Off Meeting	January 27, 2026
Progress Report #1	January 31, 2026
Request Office of Archaeology and Historic Preservation (OAHP) File Search	February 2, 2026
Public Kick-Off Meeting	February 20, 2026
Conduct Archival, Deed, and On-Line Research for Properties (Pre-Fieldwork Preparation)	March 1 – March 30, 2026
Property Owner Notification	February 27, 2026
Progress Report #2	February 27, 2026
Progress Report #3	March 31, 2026
Interim Financial Report	March 31, 2026
Conduct Fieldwork, Mapping, and Photography for all Properties	April 2026
Prepare Architectural Inventory Forms	May 1 – June 19, 2026
Progress Report #4	April 30, 2026
Progress Report #5	May 29, 2026
Submit Draft Architectural Inventory Forms and Report to Erie, EHPAB, and SHPO	June 19, 2026
Revise Architectural Inventory Forms and Report	July 6 – August 21, 2026
Submit Final Architectural Inventory Forms and Report	August 21, 2026
Erie Town Council Survey Report Presentation/Final Public Meeting	August 28, 2026
Final Financial and Survey Report	September 2026

QUALITY CONTROL

The following Quality Control Plan (QCP) outlines ERO's internal processes for ensuring that qualified personnel are assigned to projects and for ensuring adherence to survey standards and the delivery of a high-quality report in compliance with all environmental permitting regulations.

ERO's QCP includes the following areas:

1. Permitting Stipulations (if necessary)
2. Survey and Resource Documentation Standards
3. Data Control
4. Reporting

1. Permitting Stipulations

ERO's architectural historians meet SOI qualifications. No permit is required for this project.

2. Survey and Resource Documentation Standards

ERO's standardized field procedures ensure that the appropriate level of staff completes documentation commensurate with SOI standards and OAHP requirements.

Identifying documentation deficiencies while in the field is central to ERO's approach to ensuring that survey and resource documentation standards are met. While in the field, assigned personnel will assess resources using available field data after a thorough desktop review. Jen Wahlers, as Project Manager, will review each architectural inventory form and NRHP/SRHP evaluation to assess the adequacy of documentation and the rationale behind each assessment.

Examine the scope of the data required to gather during field visits based on available information and on-site conditions.

3. Data Control

Data control is the responsibility of the field directors until data transfer occurs from the field to the laboratory. Data control protocol in the field requires daily download of each global positioning system (GPS) unit (GPS unit data are stored on a SIM card), tablet, and digital camera to a field laptop, from which it is transferred to ERO's file server.

At each juncture, a checklist is used to track each internal milestone: file transfer (GPS and site forms), data management, and draft and final reports. Redundancy is inherent in the ERO system with Cloud-based file server backup. Standardized project folders provide organization and tracking.

4. Reporting

Quality control at the reporting phase begins with a report template. A report template ensures formatting consistency and that all required information is provided. A standardized report template ultimately streamlines the reporting process and facilitates timely peer review.

Each report goes through a three-step review process prior to submittal of the draft deliverables:

1. All reporting deliverables are completed by the primary field author.
2. A technical editor reviews the report and figures for clarity and formatting consistency.
3. The report is peer reviewed by the resource lead to ultimately ensure technical and regulatory compliance. Peer review, in which project team members review each other's work, increases the quality of deliverables.





JENNIFER WAHLERS

ARCHITECTURAL HISTORIAN



Jen has nearly 20 years of experience in historic preservation analysis, research, and federal compliance. She began her career in the nonprofit sector before transitioning to the Colorado Department of Transportation (CDOT) where she worked as a historian. Jen later transitioned to consulting where she gained experience in grant-funded local preservation contexts and studies and continued working on transportation-related projects.

KEY STRENGTHS

- Section 106 of the National Historic Preservation Act (NHPA) Compliance
- Historic Resource Survey
- State Historic Preservation Office (SHPO) Coordination
- Historic Contexts

EDUCATION

2007 | MHP | University of Kentucky

2005 | B.A. | University of Wisconsin-Madison

CERTIFICATIONS

Colorado National and State Register
Review Board Member (2018-present)

Months with ERO: 4 | Years' Experience: 19

City of Cortez Survey of Auto/Tourism Properties | Montezuma County, CO
Architectural Historian – Researched and surveyed 17 resources related to the post-war era in Cortez, including motels, drive-ins, service stations, and gas stations for a project funded by a Certified Local Government Grant from History Colorado. This project involved the development of a historic context for the Post-World War II automobile tourism boom experienced in Cortez.
**Completed prior to joining ERO*

Erie Parkway | Weld County, CO
Architectural Historian – Developed an area of potential effects (APE), for the U.S. Army Corps of Engineers, surveyed the irrigation ditch, and submitted documentation in compliance with Section 106 of the NHPA for a project that involved the replacement of a bridge carrying Erie Parkway over an irrigation ditch.
**Completed prior to joining ERO*

North College Avenue Improvements – Conifer to Wilcox | Fort Collins, CO
Architectural Historian – Developed an APE, completed research, conducted field survey, prepared a survey report and site forms, and prepared eligibility and effects determinations for 15 resources, including motels, gas stations, and restaurants along State Highway 287. This CDOT project proposed improvements to North College Avenue in Fort Collins including curb, gutter, bicycle lanes, and intersection improvements. The project also included Section 4(f) compliance and Level II documentation as mitigation for an adverse effect.
**Completed prior to joining ERO*

US 287 at Isabelle Road Intersection Safety Improvements | Boulder County, CO
Architectural Historian – Developed an APE, surveyed impacted resources, and completed eligibility and effects correspondence for submittal to CDOT and the SHPO for a project that widened Isabelle Road and US 287 to improve safety at the intersection and involved irrigation and transportation linear resources, as well as agricultural properties.
**Completed prior to joining ERO*

City of Cortez Preservation Survey Plan | CDOT | Montezuma County, CO
Architectural Historian – Developed the historic context of the entire city of Cortez and conducted an extensive windshield survey that informed the development of survey priorities to be used by Cortez in planning future historic preservation survey efforts. The project involved extensive planning, organizational, and research efforts to ensure all areas of the city were captured and appropriately prioritized based on integrity evaluations and potential significance.
**Completed prior to joining ERO*



LESLIE MOORE

ARCHITECTURAL HISTORIAN AND HISTORIAN



Leslie is experienced in cultural resource management and public history. Since joining ERO in May 2021, Leslie has conducted historic building evaluations, cultural resource surveys, file and literature reviews, reconnaissance surveys, and extensive archival research. She has completed fieldwork in counties across Colorado overseeing all facets of site documentation, application of the National Register of Historic Places evaluation criteria, along with report production. She exceeds Secretary of the Interior qualifications to conduct work in the fields of history and architectural history and performs all classes and phases of survey and investigation of cultural resources related to Sections 106 and 110 of the NHPA, State Register Act, and local regulations. Leslie is experienced in drafting Colorado State Register of Historic Properties nominations and developing creative interpretation projects such as curriculum, museum exhibits, and websites.

KEY STRENGTHS

- Architectural History
- National Historic Preservation Act (NHPA)

EDUCATION

2020 | M.A. History, Historic Preservation Concentration | Colorado State University

2015 | B.A. History | Carleton College

AFFILIATIONS

Colorado Preservation, Inc.

National Trust for Historic Preservation

Berthoud Historic Preservation Advisory Committee

Years with ERO: 4 | Years' Experience: 10

Manitou Springs Trail Reconnaissance Survey | El Paso County, CO

Historian/Architectural Historian — Directed archival research and survey of 40 cultural resources along Fountain Creek to help the City of Manitou Springs make preliminary decisions about where a proposed trail would be the least intrusive to cultural resources. Made a recommendation on the boundaries of the National Register Historic District based on the results of the survey.

CO7 Corridor Planning Tool and Concept Study | Boulder County, CO

Historian/Architectural Historian — Compiled data from state, county, and local records to assess whether existing and future historic properties may be impacted by a proposed transportation project. Provided the Colorado Department of Transportation (CDOT) with regulatory information pertinent to cultural resources to be used as part a larger environmental overview for the potential project.

Town of Snowmass Building Evaluation | Pitkin County, CO

Historian/Architectural Historian — Documented six historic buildings in an indirect area of potential effects of a new transit station for the Federal Transit Administration. The documentation included completing architectural inventory forms and making determinations of eligibility.

Red Rocks Amphitheatre | Jefferson County, CO

Historian/Architectural Historian — Completed a Historic American Engineering Record (HAER) for the southern walkway that provides pedestrian access to Red Rocks Amphitheatre. Conducted archival research and compiled design drawings and photographs to create a record of the structure before it is replaced.

28th Street and Colorado Avenue Intersection | Boulder County, CO

Historian/Architectural Historian — Completed fieldwork, architectural inventory forms, and eligibility determinations for residential and commercial properties impacted by a CDOT transportation project designed to improve mobility at a congested intersection in Boulder. Coordinated with CDOT, city officials, and engineers to determine the project's potential effects on historic properties.



Madeline Westrom-Simons

ARCHITECTURAL HISTORIAN



Madeline is an architectural historian and historian with eight years of experience in cultural resource management and historic preservation. Since joining ERO in October 2024, Madeline has conducted historic building evaluations, cultural resource surveys, reconnaissance surveys, and extensive archival research. She has completed fieldwork in counties across Montana and Florida and participated in site documentation, National Register of Historic Places (NRHP) evaluation, and adaptive reuse planning, along with report writing.

Madeline specializes in the evaluation of historic buildings and structures dating to the 19th and 20th centuries. She has documented a wide variety of buildings in the Queen Anne, Craftsman, Mission, Art Moderne, Ranch, Spanish, and Mediterranean Revival styles. She also organized and led a statewide survey of Montana's Frame and Masonry Vernacular one-room schoolhouses. In addition, Madeline specialized in the identification, research, and documentation of late-19th and 20th century cemeteries. She is also experienced in writing both abbreviated and complex historic contexts requiring in-depth archival research and critical analysis. She is comfortable with and experienced in presenting her work to audiences, including the public and review boards.

KEY STRENGTHS

- Architectural History and Surveys
- National Historic Preservation Act (NHPA) Section 106 Compliance
- Archival Research
- Cultural Resource Survey and Reporting
- Oral Histories and Interviewing

EDUCATION

2018 | B.A. History | Carroll College, MT

AFFILIATIONS

National Trust for Historic Preservation

Florida Trust for Historic Preservation

Preserve Montana

Reflections of Manatee Historical Complex
(Board Member)

CERTIFICATIONS

Secretary of the Interior Standard
Architectural Historian, 2020

Years with ERO: 1 | Years of Experience: 8

Camp George West Historical Building Survey | Jefferson County, CO

Historian/Architectural Historian – Recorded and reevaluated the integrity and contributing status of four historical structures in a portion of the Camp George West National Register Historic District that is part of a land exchange between Colorado and the National Renewable Energy Laboratory.

Beaver Ranch Inclusive Playground | Jefferson County, CO

Historian/Architectural Historian – Recorded and evaluated the integrity and NRHP eligibility of two historical structures in a portion of the Beaver Ranch Park as a result of planned improvements by Jefferson County Open Space, including new amenities, ADA accessible trails, and road safety improvements.

Pinehurst Country Club, Marston Lake North Drainage | Denver County, CO

Historian/Architectural Historian – Recorded and reevaluated the integrity of the Pinehurst Country Club Golf Course for the Marston Lake North Drainageway as a result of a channel realignment and restoration project. The report was prepared for the Urban Pinehurst Country Club and submitted to the United States Army Corps of Engineers.

Peaks-To-Plains Trail Downtown Golden Alternative Analysis and Concept Design | Jefferson County, CO

Historian/Architectural Historian – Conducted a Class I comparative analysis cultural resource survey in downtown Golden, Colorado for the city of Golden.

Thornton Water Pipeline Segments E & F | Larimer and Weld Counties, CO

Historian/Architectural Historian – Conducted historical research to help determine the potential eligibility of six historical linear resources.



EMILY ORTIZ

ARCHITECTURAL HISTORIAN



Emily is an architectural historian experienced in cultural resource management and historic preservation. She conducts architectural surveys, evaluates historical sites, and documents buildings with a variety of architectural styles for development projects. Her work includes authoring nominations for the National Register of Historic Places (NRHP) and managing surveys to assess project impacts on historical sites. Emily collaborates with stakeholders to meet preservation standards, lending her experience to navigate diverse environmental contexts.

KEY STRENGTHS

- Architectural History and Surveys
- National Historic Preservation Act (NHPA) Section 106 Compliance
- Archival Research
- Cultural Resource Survey and Reporting

EDUCATION

2023 | M.A. History - Historic Preservation/
Cultural Resource Management | Colorado
State University

2017 | B.A. History/Political Science |
Simpson College, CO

Years with ERO: 1 | Years' Experience: 2

Locke Park Land Exchange | Pike and San Juan National Forests, CO

Architectural Historian — Documented architectural and historical features of the Rainbow Trails Lutheran Camp for the Locke Park Land Exchange with the U.S. Forest Service. The project involved cataloging 62 features from 1920s-era cabins to modern amenities through detailed photography, mapping, and notetaking. Assisted with writing a comprehensive historical overview of the camp and completed Architectural Inventory Forms for the preservation and management of the camp's historical structures.

Watchman and Pine Creek Residential Complexes | Zion National Park, UT

Architectural Historian — Assisted with the baseline documentation of New Deal-era and Mission-66 residences in Zion National Park's Watchman and Pine Creek Residential Complexes. Authored Utah Historic Structure Forms for the residences and contributed to the cultural resource survey report.

Fort Collins Post Office | Larimer County, CO

Architectural Historian — Assisted with the documentation of a federal building for the General Services Administration and served as the lead author for the NRHP nomination form. Responsibilities included preparing the registration form, completing archival research, and conducting an architectural survey of the Brutalist structure. Covering 4.4 acres, fieldwork and documentation efforts confirmed the building's eligibility for historic recognition.

Colorado Parks and Wildlife Fort Collins Area Office | Larimer County, CO

Architectural Historian — Assisted with a cultural resource survey to document the historical significance of a 27-acre site. Recorded 13 buildings at the site to preserve their historical essence before potential demolition. The project highlighted the site's history as a bird research farm within environmental conservation efforts and included documentation of historical buildings relevant to Colorado's cultural heritage.

Grein Subdivision Building Survey | City of Brighton, CO

Architectural Historian — Completed a Historical and Architectural Survey of more than 87 acres to assess the historical value of multiple farmsteads facing demolition in Brighton. Three farmsteads qualified for nomination to the local landmark list. As the lead author of the Architectural Inventory Forms, completed comprehensive documentation of historical and architectural details.