

Preliminary Report on N/S Connectivity Opportunities: County Line & Arapahoe Rd to HW7 Options

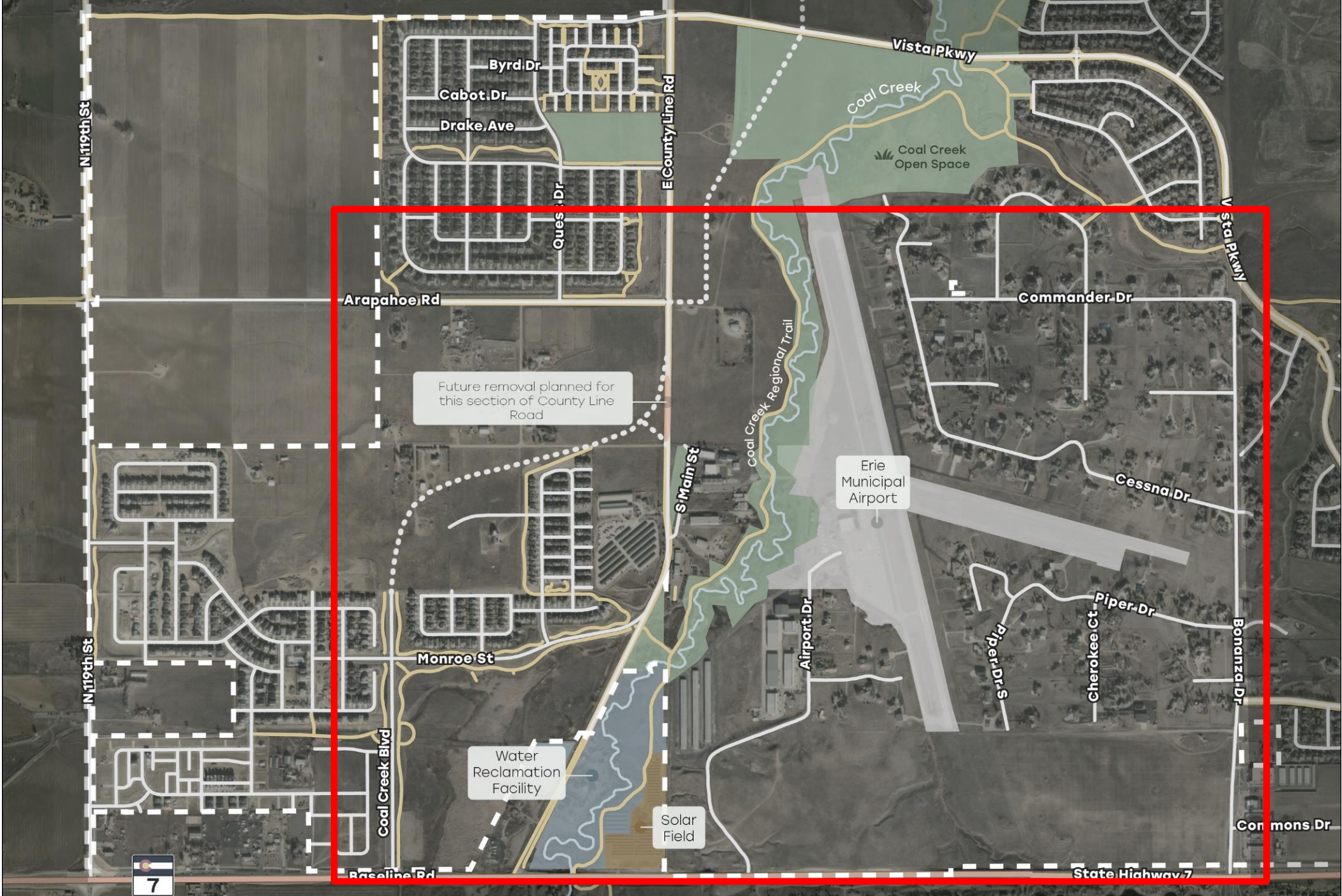
Erie Town Council

December 02, 2025

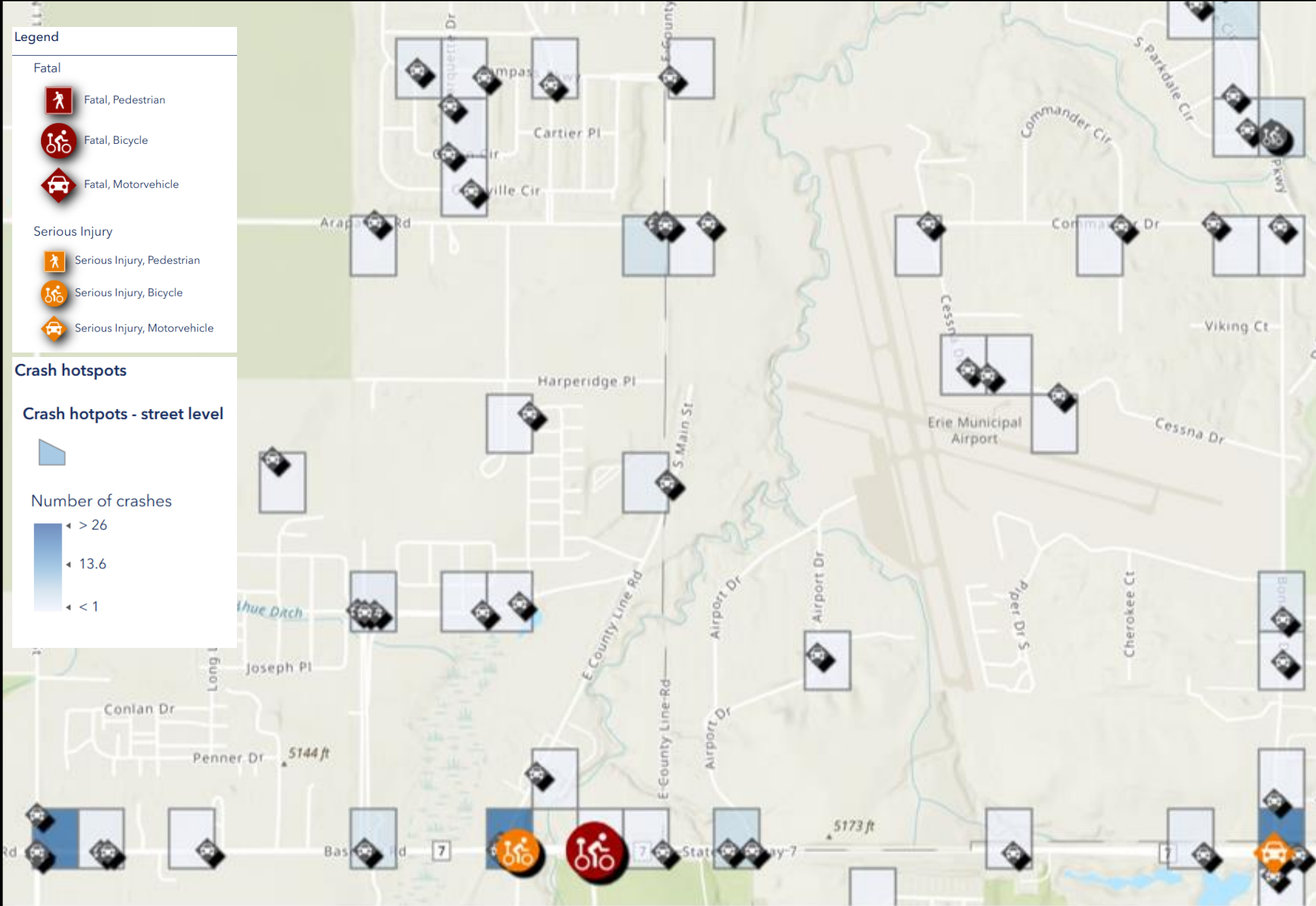
John Firouzi, Transportation & Mobility Manager



STUDY
AREA



TRAFFIC SAFETY AUDIT



LAND USE AUDIT



Regulatory Restrictions



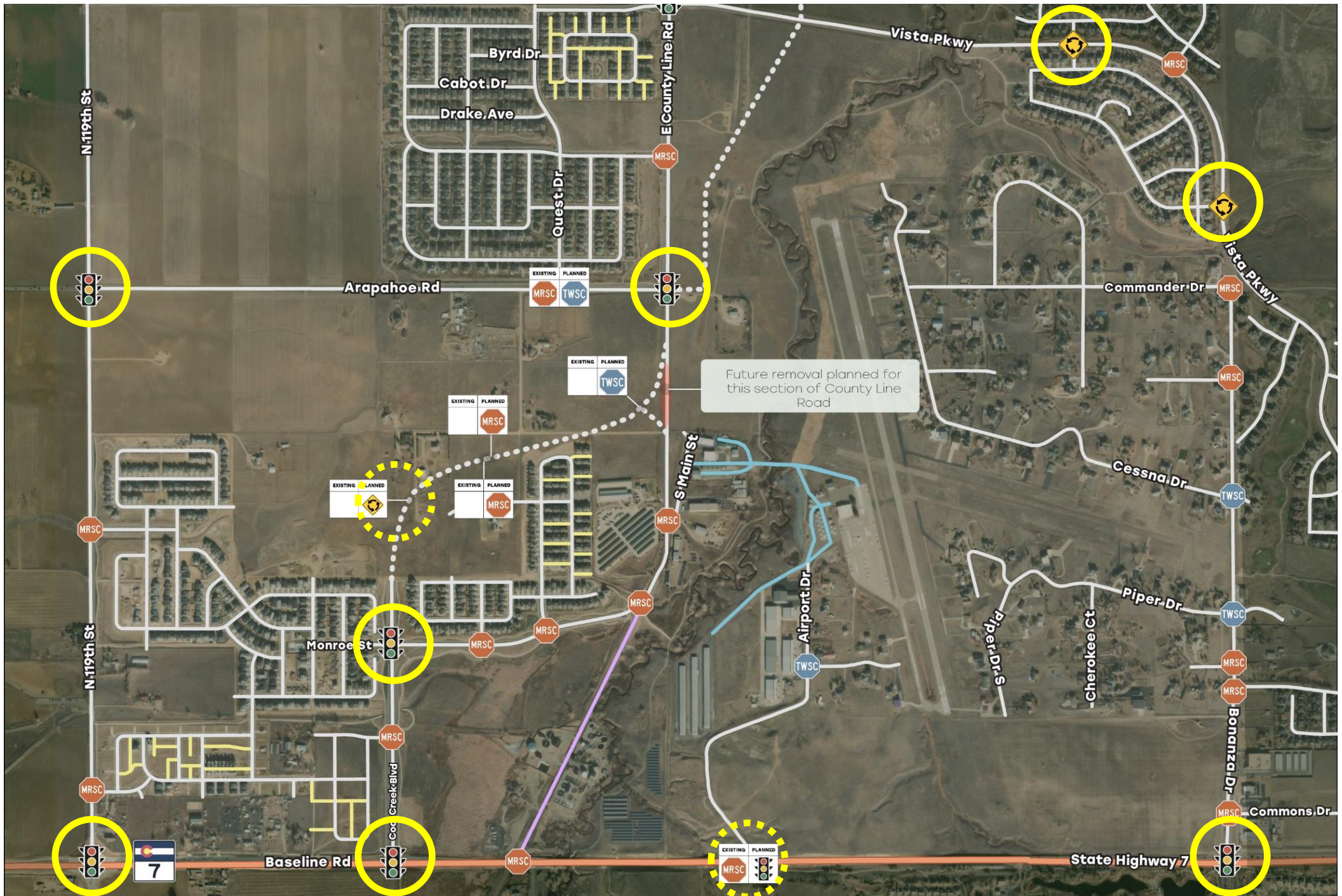
Coal Creek



Airport Runway

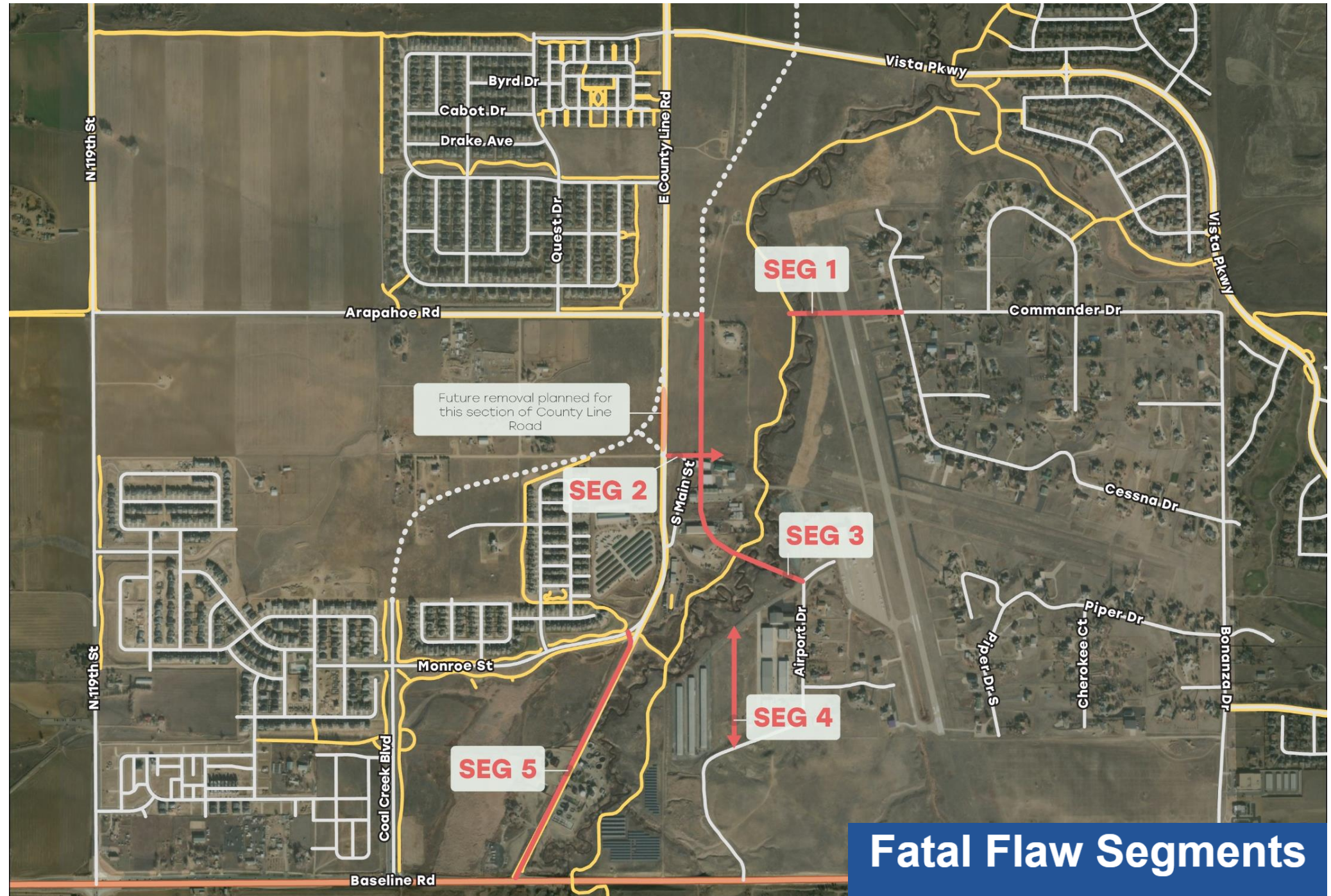


TRAFFIC CONTROL

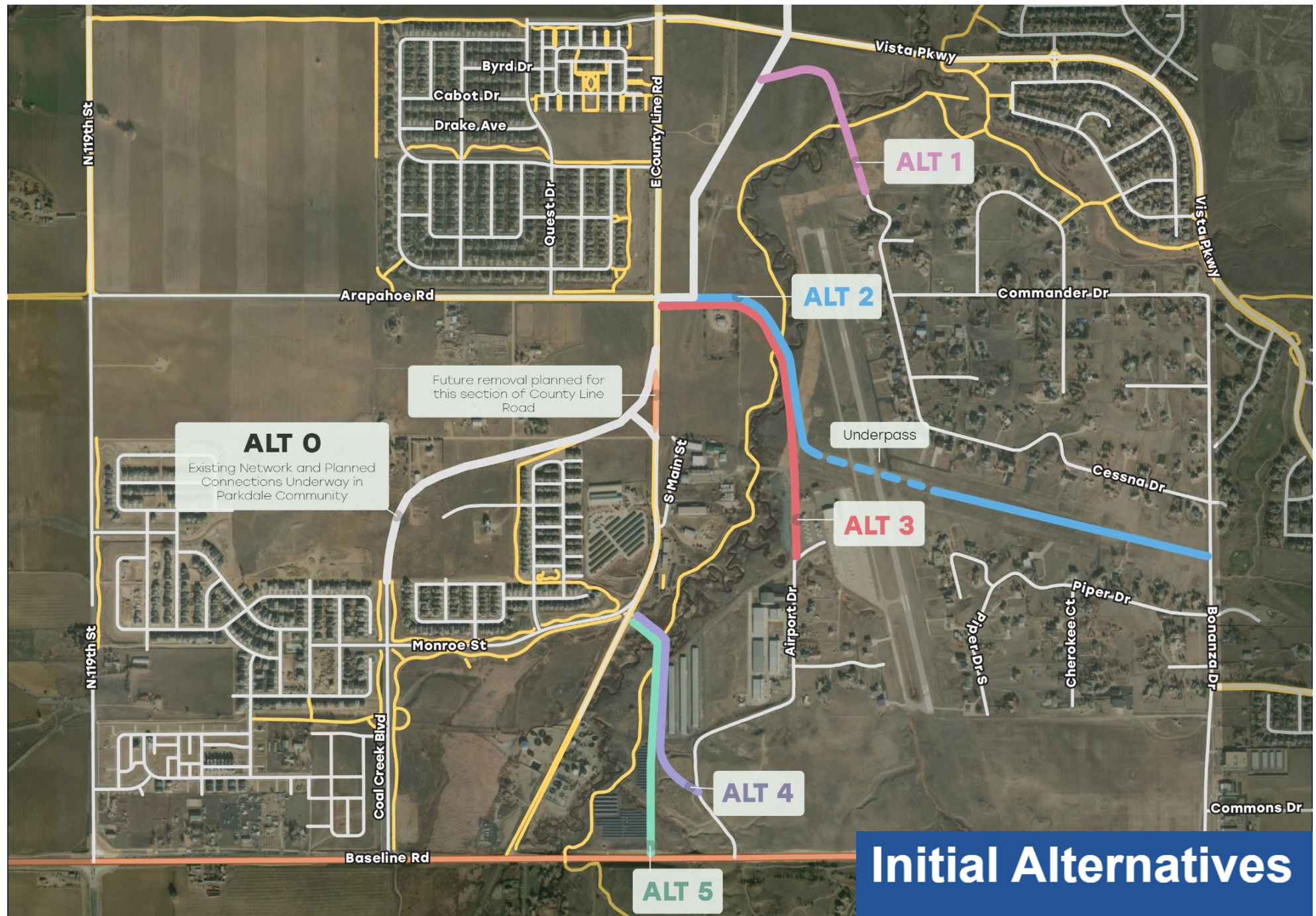


Connectivity Opportunities





Fatal Flaw Segments



Alternative 1

Challenges

- Needs to avoid Runway Protection Zone, adding curved connections
- High complexity due to Flood Plain requirements
- Impacts low-volume residential streets
- East connection to Vista Pkwy elevation change (if connected per Annexation Agreement – separate study)

Opportunities

- Could reduce traffic on Vista Pkwy, accessing Commander Drive and traffic signal at Bonanza Drive
- Improves connection to neighborhoods west of CLR and north of Vista Pkwy
- Avoids impacts to Airport land uses and runway



Alternative 2

Challenges

- Roadway geometric complexity with bridge and underpass interference with roadway curves
- Steep transitions to go over Coal Creek and under runway (slopes)
- Airport runway could be impacted during construction
- Requires extensive O&M and Engineering analysis with interferences

Opportunities

- Direct connection to Arapahoe Road, especially to serve emergency response needs
- Avoids impacts to Airport land uses and aligns with Hanger Expansion plans
- Utilizes former runway alignment right-of-way, and aligns with FAA definitions for specialized access



Alternative 3

Challenges

- Introduces new traffic within Airport boundary
- Would need to address taxiway crossings
- Requires extensive O&M and Engineering analysis with Airport Drive curved alignment and slopes

Opportunities

- Direct connection between major roads (Arapahoe Rd and CO-7)
- Avoids impacts to Airport runway
- No impact to residential neighborhoods
- Added traffic activity can benefit Economic Development interests



Alternative 4

Challenges

- Could impact existing properties and access points along County Line Rd
- Steep transitions (slopes) at Coal Creek requires very longer bridge span
- Narrow existing right-of-way north of Hwy 7 (cannot be multi-lane)

Opportunities

- Improves connection from Arapahoe Rd to Hwy 7 with less interference
- Presents an opportunity for a roundabout intersection (speed management) on CLR
- No impact to residential neighborhoods
- Avoids impacts to Airport land uses and runway
- Connects to future (funded) Traffic Signal at Hwy 7 / Airport Dr intersection



Alternative 5

Challenges

- Could impact existing properties and access points along County Line Rd
- Steep transitions (slopes) at Coal Creek requires very longer bridge span
- Narrow existing right-of-way north of Hwy 7 (cannot be multi-lane)
- Would require realignment of Airport Drive, and access restriction at Airport Dr / Hwy 7 intersection
- Impacts traffic progression on Hwy 7, given existing signal ½ mile from Coal Creek Blvd

Opportunities

- Improves connection from Arapahoe Rd to Hwy 7 with less interference
- Presents an opportunity for a roundabout intersection (speed management) on CLR
- No impact to residential neighborhoods
- Avoids impacts to Airport land uses and runway



Next Steps

- Communication & Engagement
 - Council Presentation
 - Project Webpage
- Select Preferred Alternative
- Prepare concept design (~15% level) for Preferred Alternative
 - Alignment
 - Width
 - Bridge locations
 - Conceptual cost estimate