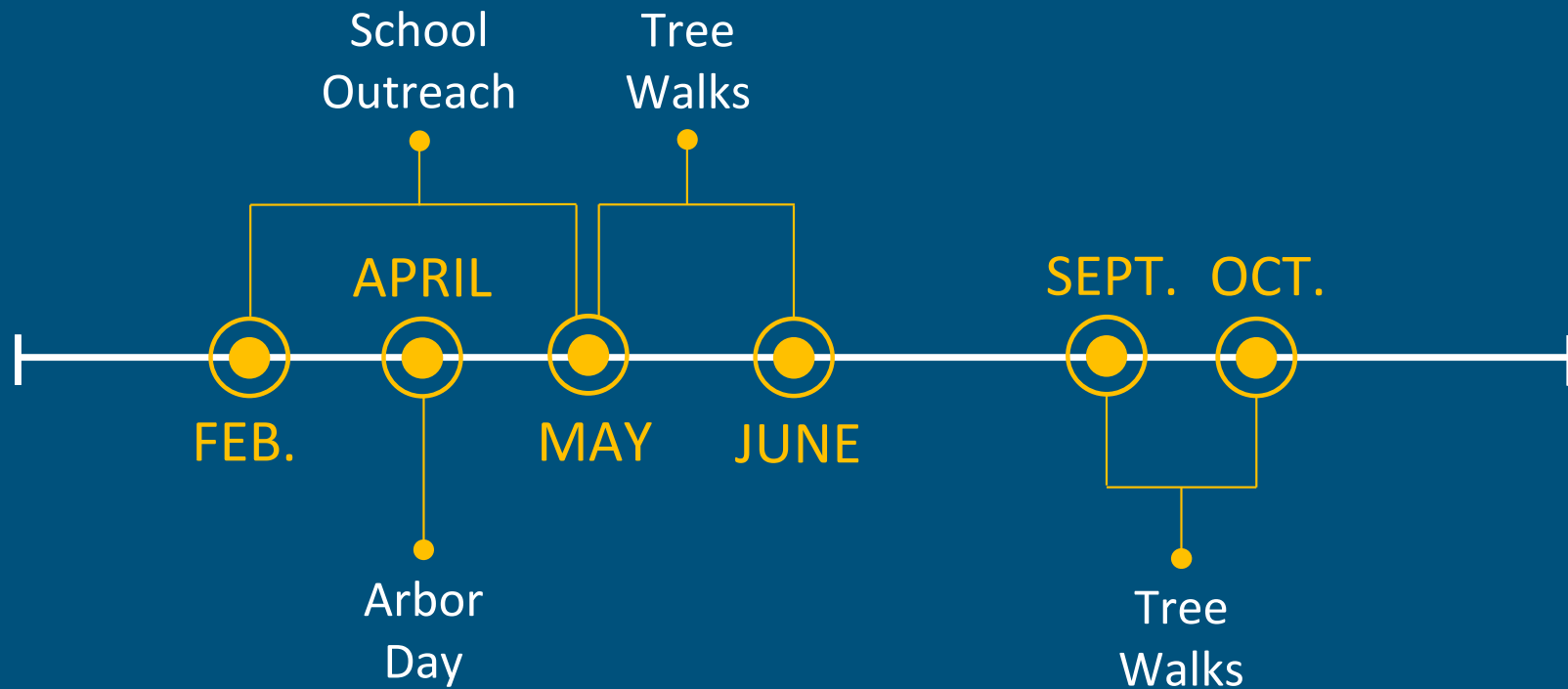




Tree Advisory Board

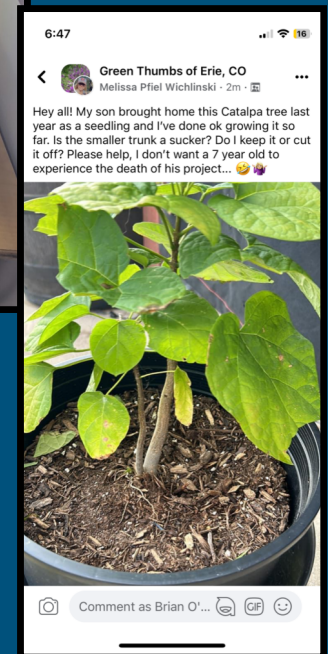
Biannual Report :: September 9, 2025

2025 Calendar of Events



School Outreach – Planting the Future

- 1st, 2nd and 3rd Grade
- Teacher kits and in-person lessons



Arbor Day/Earth Day

Saturday, April 26, 2025

Erie Community Park – Post Pavilion

10-1pm



5th Grade Poster Contest

Saturday, April 26, 2025

Erie Community Park – Post Pavilion

10-1pm

Colorado State Forest Service News

Erie 5th grader wins 2025 Colorado Arbor Day poster contest

24 Apr, 2025

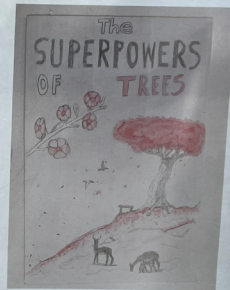
2025 Arbor Day Poster Contest Winners

Claire Oliveri

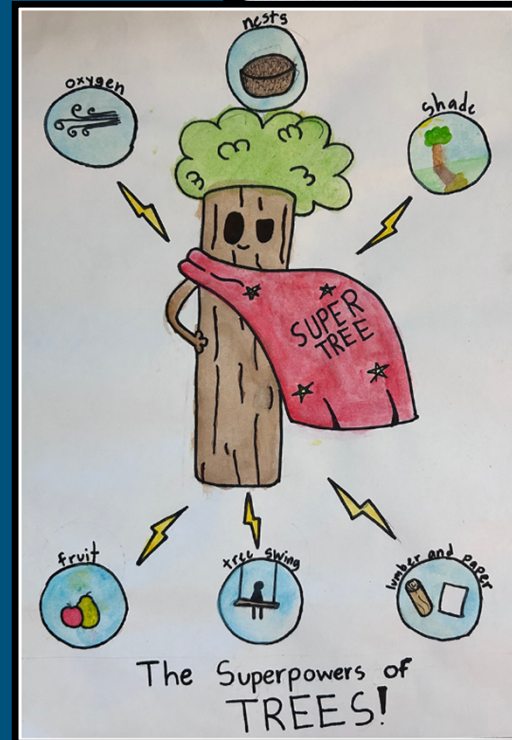


2025 Arbor Day Poster Contest Winners

Elliot Parrish



Simrik Chapagain



Trees Walks

- Educational opportunity with the Town Forester
- Next walk:
Oct. 3rd at noon – Mount Pleasant Cemetery



Tree Talk Newsletter



EMERALD ASH BORER:

Identification and Management

First detected in Erie in 2021, The Emerald Ash Borer (EAB) (*Agrilus planipennis*) is a nonnative beetle that poses a severe threat to ash (*Fraxinus* spp.) tree populations across Colorado. Native to Asia, it has spread extensively throughout the Front Range since its arrival in Colorado in 2013. Without mitigation, EAB infestations typically result in crown dieback and tree mortality within 2-4 years. Infested ash trees become structurally weak, increasing the risk of branch or whole-tree failure, posing hazards to property and public safety. Proactive management, including pesticide treatment or removal and replacement, is essential to mitigating EAB's impact on the Town's urban forest.

Symptoms and Identification

- Progressive crown thinning (less leaves) and branch dieback
- Distinctive D-shaped exit holes on bark
- S-shaped larval galleries beneath the bark
- Increased woodpecker foraging activity (a response to larval presence)

Management Strategies

- When deciding whether to treat (pesticide) or remove and replace an ash tree, consider the following:
- **Tree Health:** If more than 50% of the canopy is already dead, pesticide treatments may not be effective.
 - **Location & Benefits:** Trees providing shade and ecological value may be worth preserving.
 - **Treatment Costs:** Ongoing insecticide treatments can be expensive but may extend a tree's life.
 - **Replacement Considerations:** Removing an infested tree and planting a resilient species is more sustainable in the long run.
 - **EAB Proximity:** Preventative treatment is most effective before infestation occurs.
 - **Professional Guidance:** Consulting a certified arborist can help determine the best approach.

For more EAB information, contact Colorado State University (CSU), Master gardeners, or the Town of Erie's Forestry office.

- CSU Master Gardeners: extension.colostate.edu/topic-areas/insects/emerald-ash-borer-resource/
- Town of Erie Forestry: erieco.gov/trees



ARBOR DAY/EARTH DAY CELEBRATION

Join us for Erie's Arbor Day and Earth Day festival — a free event dedicated to promoting sustainability and fostering community connections! Hosted by the Tree Advisory Board, Sustainability Advisory Board, along with Town of Erie Parks & Open Space Division and Sustainability Division, this festival offers a day filled with engaging activities and opportunities to learn about sustainable practices.

Event Details:

Date: Saturday, April 26

Time: 10 a.m. – 1 p.m.

Location: Erie Community Park - Post Shelter | 450 Powers Street
In case of poor weather: Erie Community Library | 400 Powers Street

FREE TREE GIVEAWAY

In honor of Arbor Day we're gifting approximately 100 1" diameter trees to our residents, along with our traditional seedling giveaway at the event.

The size of the trees being offered are ¾-1" caliper, 4-8' tall and include the following species:

- Maple, State Street Miyabei | Mature Height: 40-45'
- Oak, Swamp White | Mature Height: 50-60'
- Bald Cypress | Mature Height: 50-70'
- Elm, Choice City David | Mature Height: 40-50'

DEADLINE TO ENTER: Saturday, April 26 at the conclusion of the Arbor/Earth Day event. We will randomly select and notify 100 winning households in the days following.

SPECIES SPOTLIGHT!

The grow-your-own-food movement is thriving - even in small spaces - thanks to the compact **Fruit Snacks Series Columnar Apple Trees**. Growing just 8-10' tall and 2-3' wide, they fit easily in tight yards or large containers.

With varieties like Tangy Green, Tasty Red, and Blushing Delight, these trees produce full-sized apples perfect for fresh eating, baking, or canning. They thrive in Colorado with minimal pruning and just need regular watering and a nearby apple or crabapple tree for pollination.

Now available at many local nurseries - call ahead to check stock!

Homeowner Rebate Program

Town of Erie residents can receive up to \$200 off their utility bill with a qualifying tree purchase.

- Choose an approved tree species
- Plant during the optimal planting period:
Spring: March 15–June 15 or
Fall: Sept. 1–Oct. 15
- Follow simple guidelines to qualify.

erieco.gov/treerebate

Mark Your Calendars: May 2 at noon Tree Walk at Arapahoe Ridge Park!

Thinking about adding a new tree to your yard? Want to connect with fellow tree lovers and learn more about Erie's unique urban forest? Tree Walks, led by Town Forester Tom Read and the Tree Advisory Board, are a great way to explore the tree species that thrive in our community while enjoying a guided tour. Come explore, ask questions, and enjoy a walk with us. We'll see you there!

[Home](#) > [Services](#) > [Parks & Recreation](#) > [Parks & Open Space](#) > Forestry & Horticulture

Forestry & Horticulture

Tree Collections

The Town is in the process of updating our Parks Tree Inventory and hopes to make it available to the public summer 2024.

Tree City USA

The Town of Erie is a proud member of [Tree City USA](#). This designation illustrates the town's dedication to continuing to maintain and grow our urban tree canopy. The Town has been a member of Tree City USA since 1999.

Did you know...

The Town of Erie recently updated its [Municipal Code, Chapter 3: Trees and Shrubs](#). This chapter addresses the maintenance of trees and shrubs to improve safety, visibility, and access throughout the Town.

Key Updates:

- It shall be the duty of the owner of any private property within the Town to maintain all trees and other woody plants as necessary located upon the property of such owner in order to provide for the safe and convenient use of streets, alleys, sidewalks, walkways, trails or other town-owned property

Contact Us

Forestry

[Email Forestry Staff](#)

Address

150 Lambert Avenue
Erie, CO 80516

Ph: 303-926-2887

Hours

Monday-Friday 7 a.m.-3 p.m.

Subscribe to our eNewsletter

email address

[View archive issues](#)

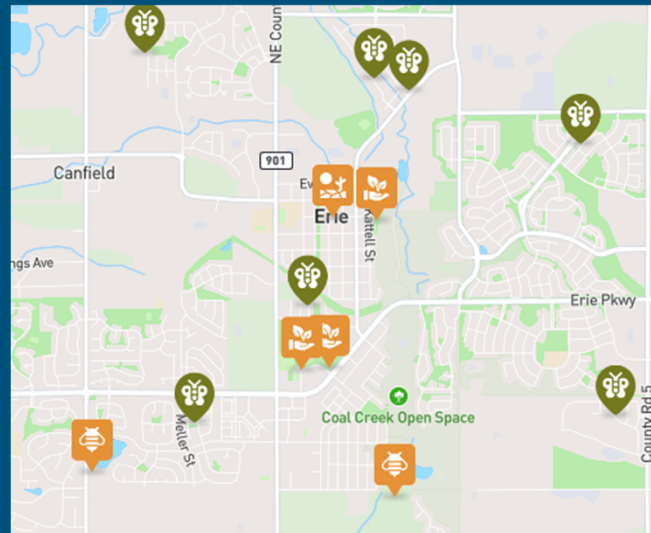
Other Ways

Other ways we are getting involved:

- Supporting Erie's Fruit Tree Rescue program
- Supporting Friends of Coal Creek and the Pollinator Districts
- Linear Park



<https://www.fruitrescue.org>



<https://www.erieco.us/eries-buzzing-gardens>



<https://erieco.gov/2370/Linear-Open-Space>

Existing Tree Programs

Residential Tree Rebate Program

Available to Property Owners

HOA Cost Share

Available to HOAs

School and Non-Profit Cost Share Program

Available to schools and non-profit organizations

For more information: Google “Town of Erie Tree Programs”
or visit: <https://www.erieco.gov/185/Tree-Incentive-Programs>



Tree Board Members:

Amy Demeyer

Patty O'Donnell

Nathan Ruane

Claudia Smelko, Vice Chair

Jason Shimmel, Chair

Taylor Thomson

Leanne Vielehr, Secretary

