



ERIE
COLORADO

Town of Erie Landfill Task Force

Town Council Virtual Special Meeting

Nov. 19, 2024



Agenda and Objectives

Agenda

- Review Task Force Purpose, Selection and Meeting Process
- Discuss Community Concerns
- Discuss Recommendations

Objectives

- Discuss the process the Task Force took to develop recommendations for the Front Range Landfill (FRL).
- Understand the concerns shared by the community about the FRL and how the recommendations address those concerns.
- Answer questions on and discuss the recommendations.



Project Team

Town of Erie

- **David Frank**, Director of Environmental Services
- **Eryka Thorley**, Sustainability Manager
- **Gabi Rae**, Director of Communications & Community Engagement

Weaver Consultants Group

- **Jason Edwards**, Principal
- **Chuck Marsh**, Project Director

Waste Connections

- **Mark Adams**, Engineering Manager
- **Randy Tourville**, District Manager
- **Dalton Ellis**, Region Engineer

Kearns & West

- **Morgan Lommele**, Facilitator
- **Colin Johnson**, Notetaker & Co-Facilitator



Task Force Roster

- Geoff Deakin, Vista Ridge
- Sheryl Elliss, homeowner along CR-6
- Lisa Hough, Erie Highlands
- Michael Howard, Erie Highlands
- Sherry Kuntz, Vista Ridge
- Christina Schust, Ranch Eggs
- Scott Wood, Vista Ridge
- Cassie Yehl, Vista Point

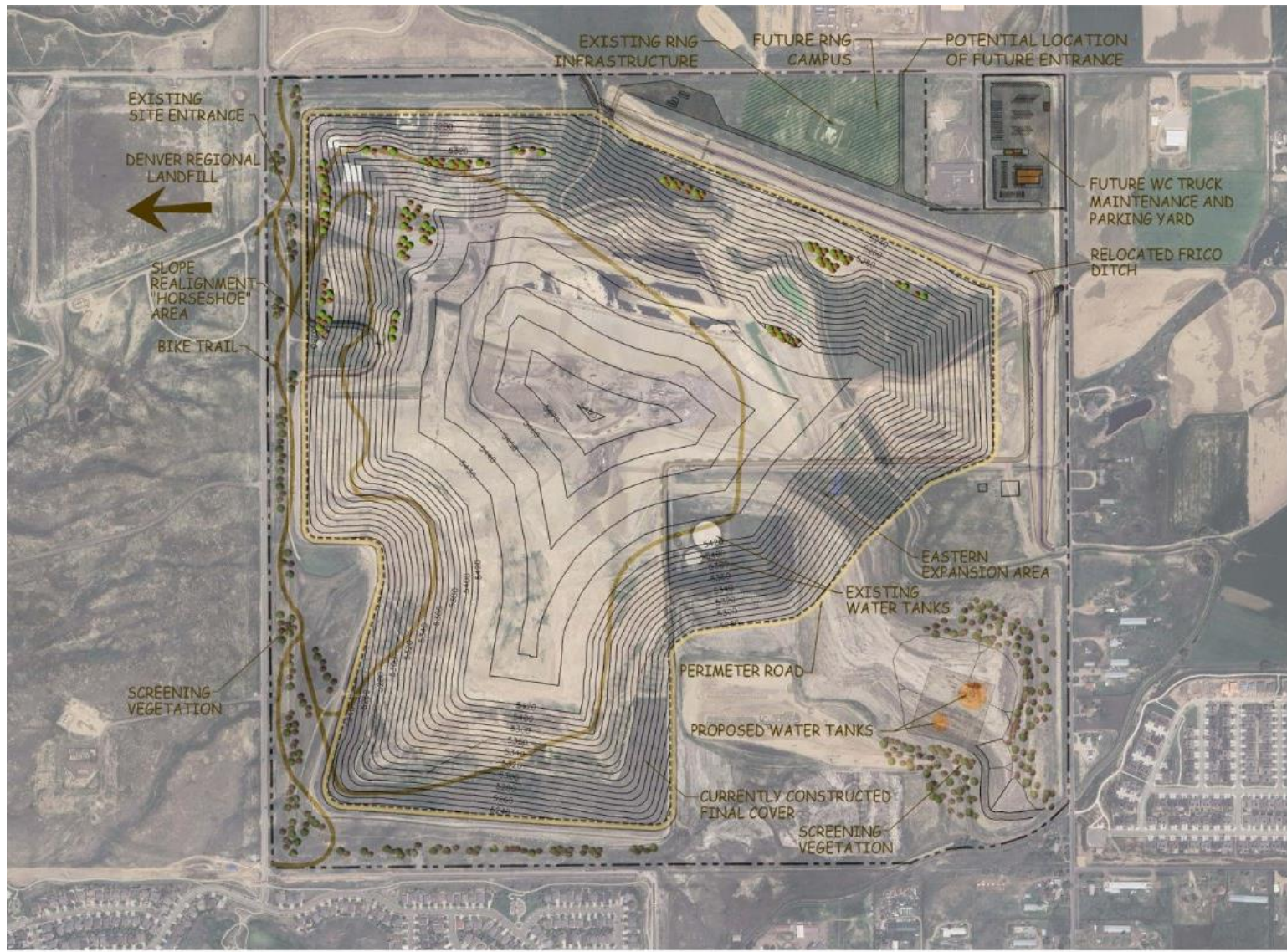


Task Force Purpose

- Waste Connections is evaluating options to potentially expand its permitted boundaries and extend FRL's operation while being a good neighbor and member of the Erie community.
- The purpose of the Task Force was to explore Waste Connection's request through the lens of the surrounding communities and develop recommendations to minimize negative impacts on the surrounding area.



Proposed Changes to Permitted Landfill Footprint





Task Force Selection Process

- The Task Force selection process was led by Kearns & West, a neutral facilitation firm. Kearns & West identified Task Force members who would represent diverse backgrounds, areas, and perspectives. Town Council approved the members.
- Landfill Task Force met six times between April – October 2024. All meetings were open to the public to attend in person or virtually.
- Task Force adhered to guidelines to remain open-minded, interact respectfully, commit to the success of the process, share interests, and work together to resolve differences.



Public Comments

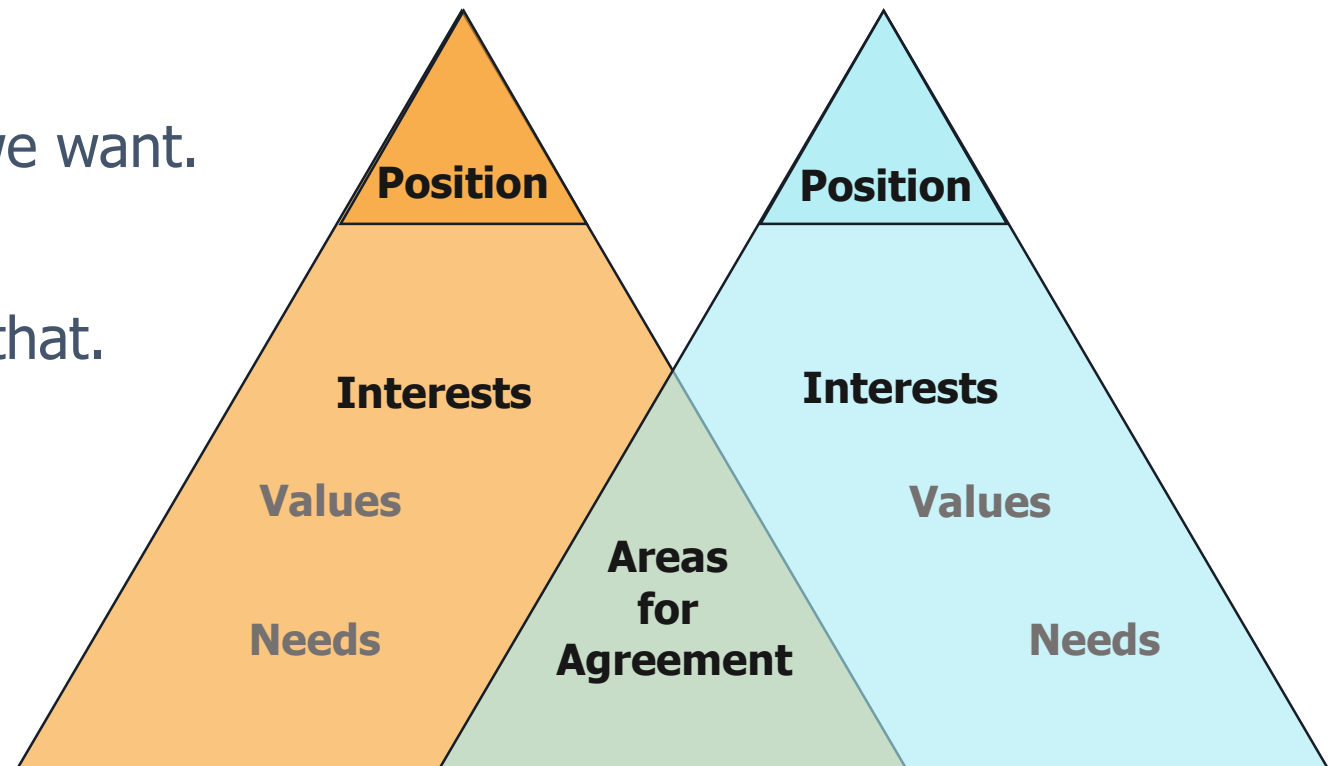
- LTF meetings were open to the public.
- The public could submit comments via the project webpage or physical comment card if attending an LTF meeting in person.
- Public comments were reviewed at the beginning of each LTF meeting.
- LTF members are asked to review comments on the website as the process progressed and in advance of each meeting.
- **50** comments were received from the public.

Positions vs Interests

Throughout the Task Force process parties were encouraged to find **interests** that underlie their **positions**, identify areas of agreement and disagreement, and work to find mutually satisfying solutions.

Positions – What we say we want.

Interests – Why we want that.





Community Concerns

The following represent Task Force and community concerns expressed throughout the process. Community members shared concern that these issues would grow if the FRL footprint expanded.

- Increased traffic
- Roadway hazards
- Aesthetic impacts
- Litter
- Environment and health concerns
- Overuse and reliance
- Need for transparency and community engagement



Moving Past Positions

The Task Force, Town, and Waste Connections met monthly for two hour facilitated discussions on specific issues and concerns. Parties worked to identify areas of agreement and disagreement and to find mutually satisfying solutions. The facilitator ensured an **equitable process** that balanced speaking time and focused on interests and identifying areas of agreement.

- Task Force members voiced neighbors' desire to **prioritize the safety** and **quality of life** for residents.
- The Town and Waste Connections were **transparent** about their relationship.
- Waste Connections provided a **detailed overview** of landfill operations and highlighted steps already underway to **address community concerns**.
- Task Force members **toured the FRL twice** to observe operations and visit potential new entrance locations.



Task Force Recommendations



Recommendation Categories

The recommendations developed by the Task Force were organized into the following categories.

- Entrance and Hauling Routes
- Maintenance Yard Land Swap
- Landfill Footprint and Phasing – West Side
- Landfill Footprint and Phasing – East Side
- Community Benefits



Entrance and Hauling Routes

- There is steadily increasing traffic along CR-5 between CR-4 and CR-6, which can create traffic congestion at the existing landfill entrance along CR-5.
- The current routes used by commercial haulers create traffic congestion on roadways surrounding the FRL and negatively impact the quality of life for surrounding communities.
- The current routes also negatively impact the intersection of Erie Parkway and CR-5, which is adjacent to Erie High School. The LTF expressed concerns about landfill traffic near inexperienced youth drivers.

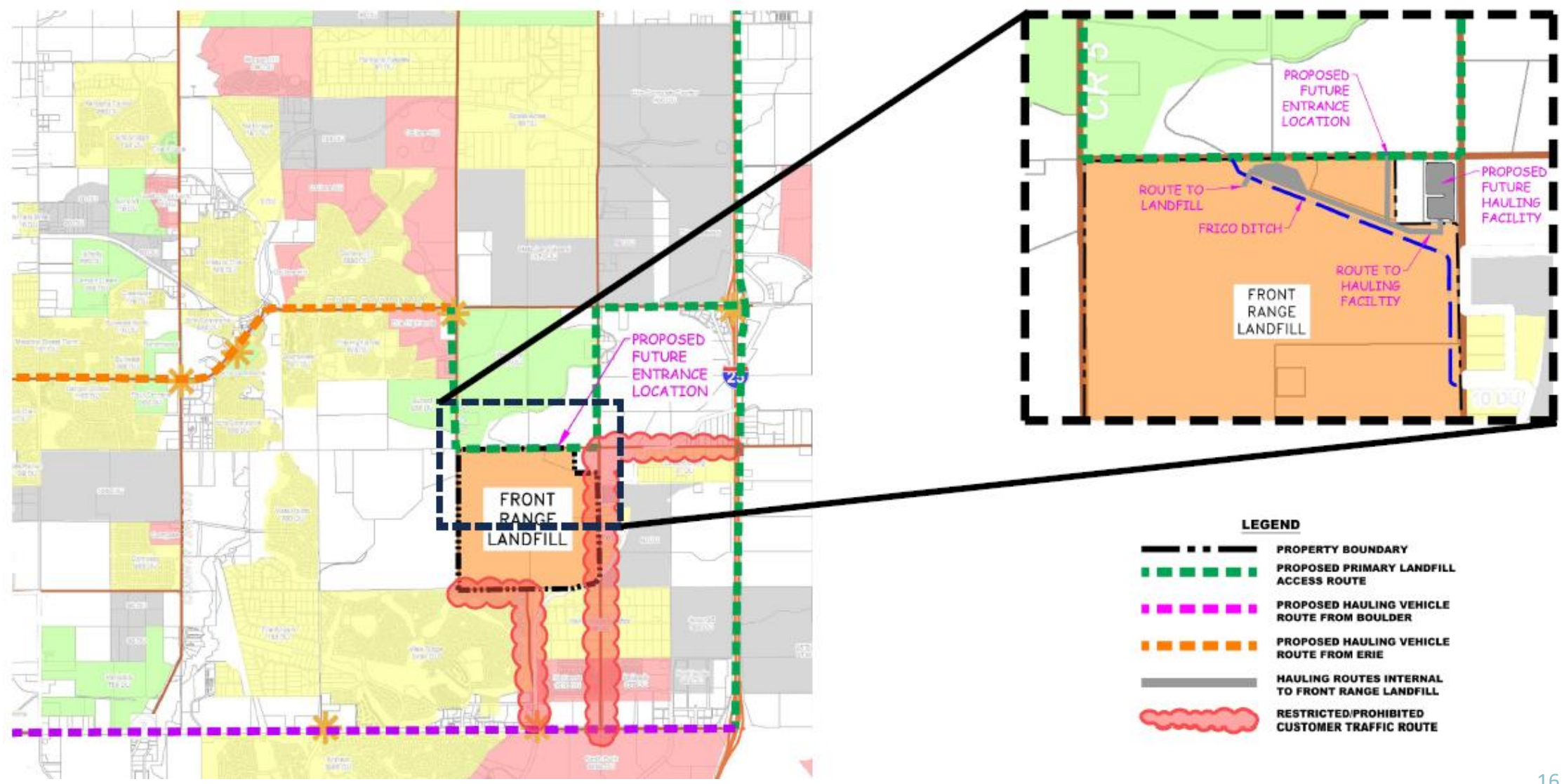


Entrance and Hauling Routes

The recommendation of the Task Force is to:

- Relocate the FRL entrance to CR-6 between CR-5 and CR-7.
- Implement roadway improvements to reduce traffic congestion related to the new entrance.
- Require certain haulers to use designated routes when accessing FRL.
- Enforce restrictions on Hauler routes.
- Implement safety improvements on the roads surrounding the FRL, especially around the new entrance and at intersections along designated hauling routes and adjacent to the new entrance.

Proposed Hauling Routes to FRL





Maintenance Yard Land Exchange

- Waste Connections' maintenance yard is currently on a ~3-acre parcel of land, five miles away from the FRL on East County Line Road.
- The Town owns a ~10-acre parcel of land at the northeast corner of the FRL.
- Waste Connections and the Town would like to exchange these parcels of land to satisfy their respective interests.

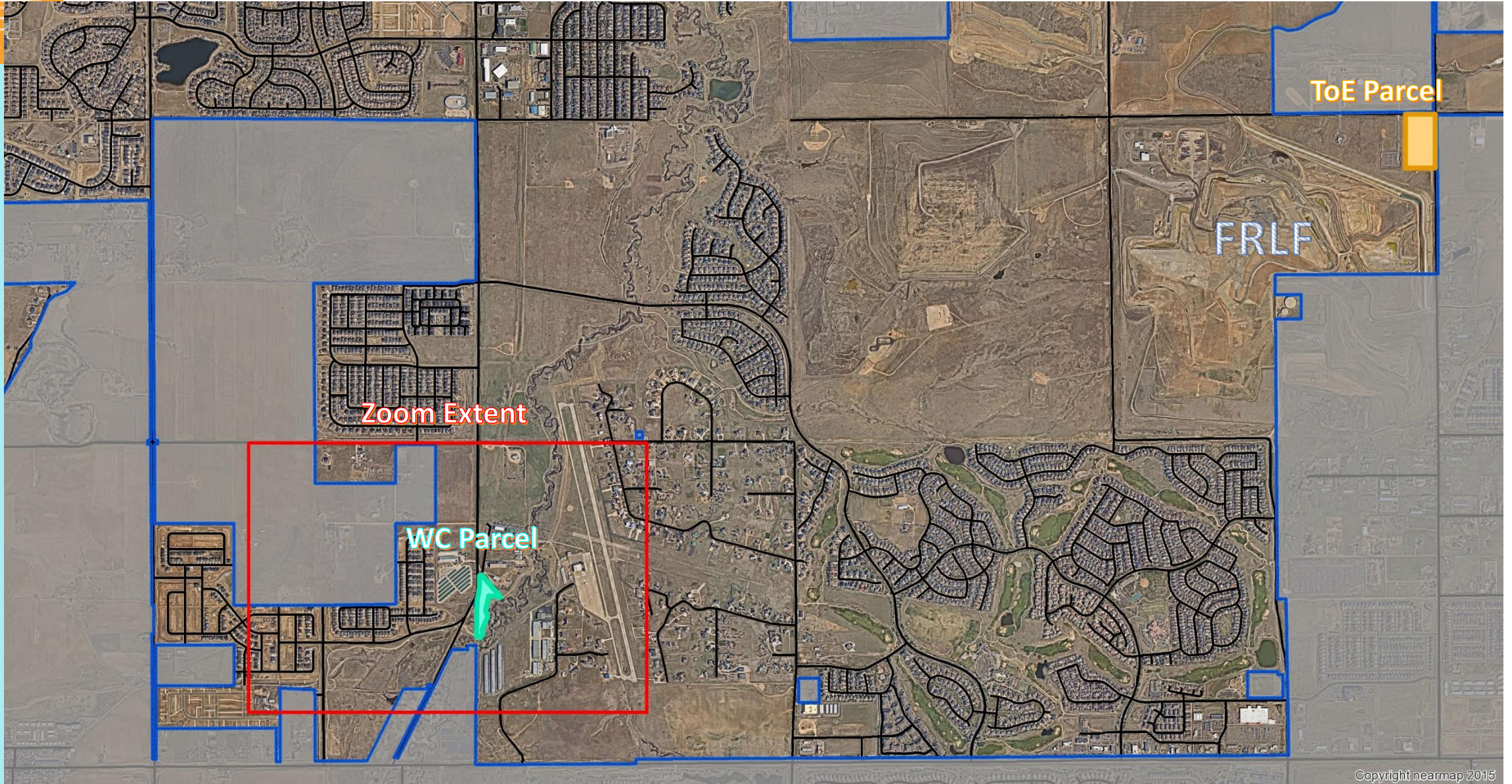


Maintenance Yard Land Exchange

The recommendation of the Task Force is to:

- Relocate the Waste Connections maintenance yard to the Town-owned parcel of land at the northeast corner of the FRL with the Town taking ownership of the current maintenance yard location.
- Implement a land exchange between the Town and Waste Connections to facilitate the relocation of the maintenance yard.

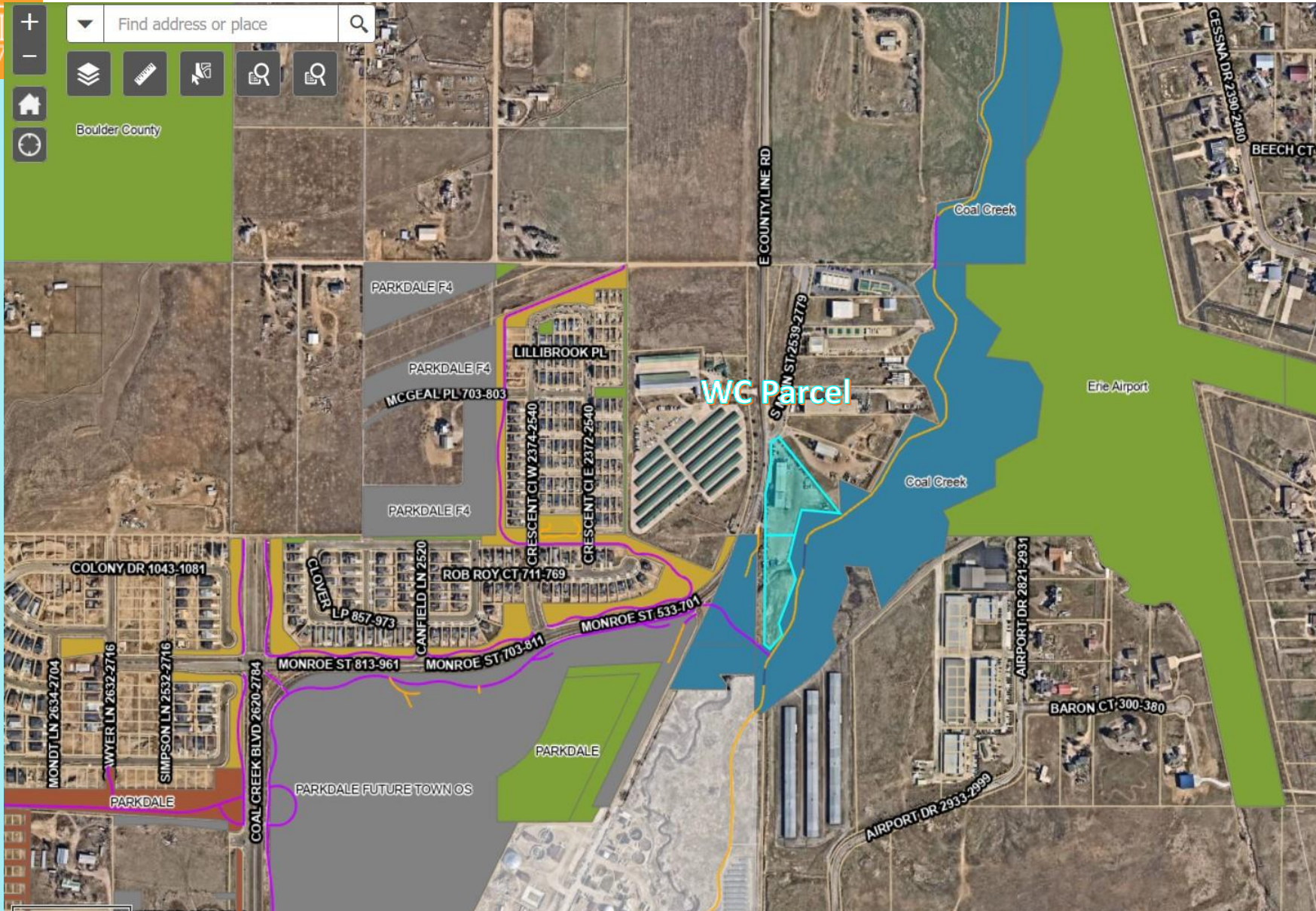
Site Location and Land Exchange



Site Location and Land Exchange



TOWN OF ERIE
187



Legend

Parks & Recreation

Trailheads

- Trail Access
- Trailhead

Trails

- ASPHALT
- CONCRETE
- CONCRETE CRUSHER FINE COMBO
- CRUSHER FINES
- MAINTENANCE ONLY
- NATURAL
- BOARDWALK
- OTHER

Green Spaces

- Erie
- HOA / Erie
- Erie -UDFCD
- HOA
- Metro District
- School District
- UDFCD
- Vector Air
- Other
- HOA / Metro District

Erie_Basemap_webmercator

Base Layers

Streets

- Collector
- Arterial

Parcels

- Other



Landfill Footprint and Phasing – West Side

- The 3.8-acre horseshoe-shaped notch on the west side of the FRL, directly south of the FRL entrance, is currently owned by Waste Connections though it is carved out of the permitted landfill boundary because it is the site of a plugged and abandoned gas well.
- Waste Connections would like to extend its permitted boundary within the property it already owns to include the notch.



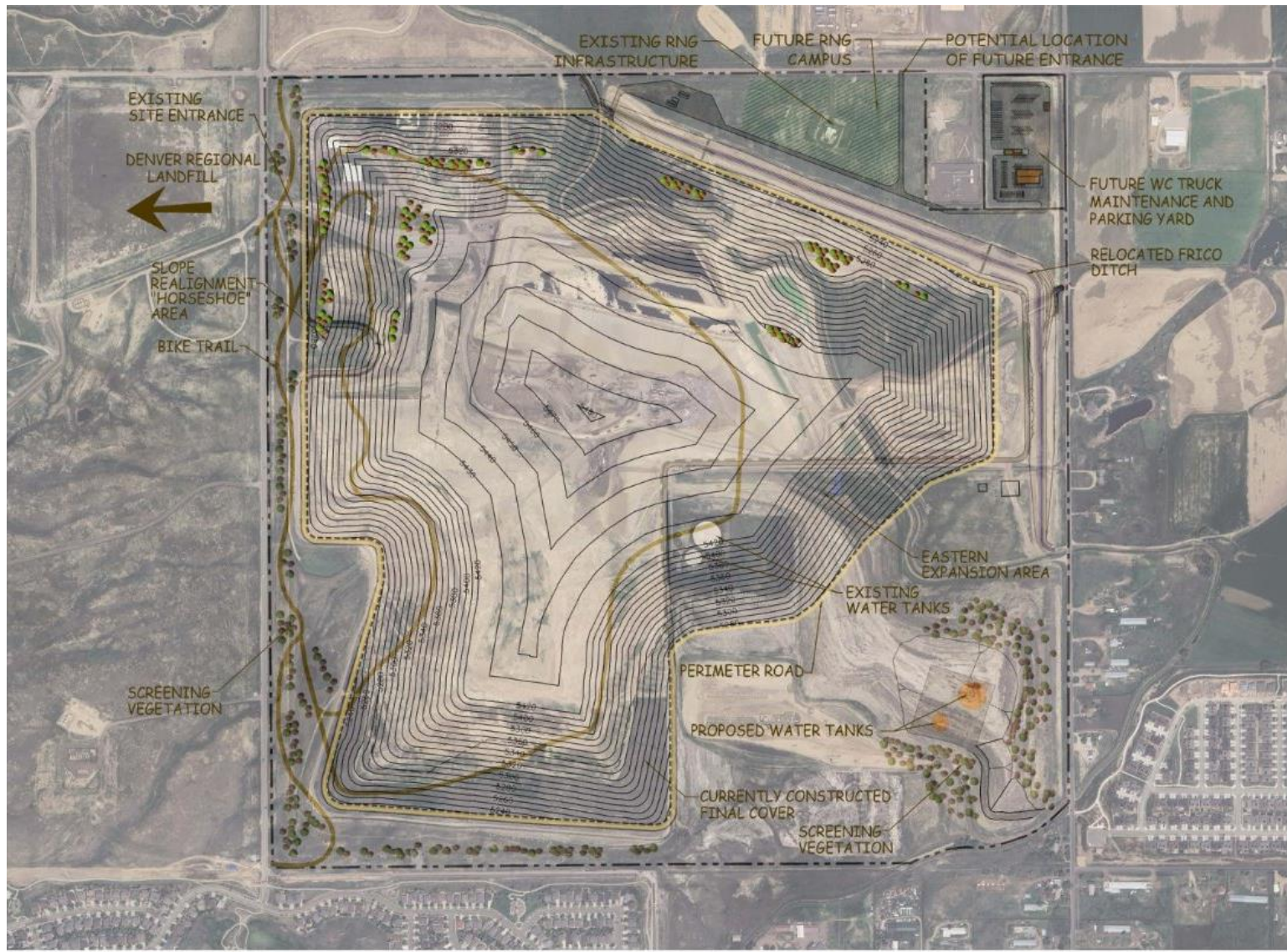
Landfill Footprint and Phasing – West Side

The recommendation of the Task Force is to:

- Change the FRL permitted footprint on the west side to include the 3.8-acre notch if a satisfactory review of the plugged and abandoned oil and gas well is completed and a monitoring plan is established to ensure health and environmental safety.
- Accelerate closing the FRL's west side and develop the first phase of a trails system on the site.



Proposed Changes to Permitted Landfill Footprint





Landfill Footprint and Phasing – East Side

- Waste Connections would like to expand its permitted footprint within the property it already owns to continue landfill operations on the southeast side.
- Expanding the permitted footprint would add ~31 acres to the current footprint, extending the FRL's lifespan.
- The change would require relocating Town of Erie water tanks located onto FRL property.

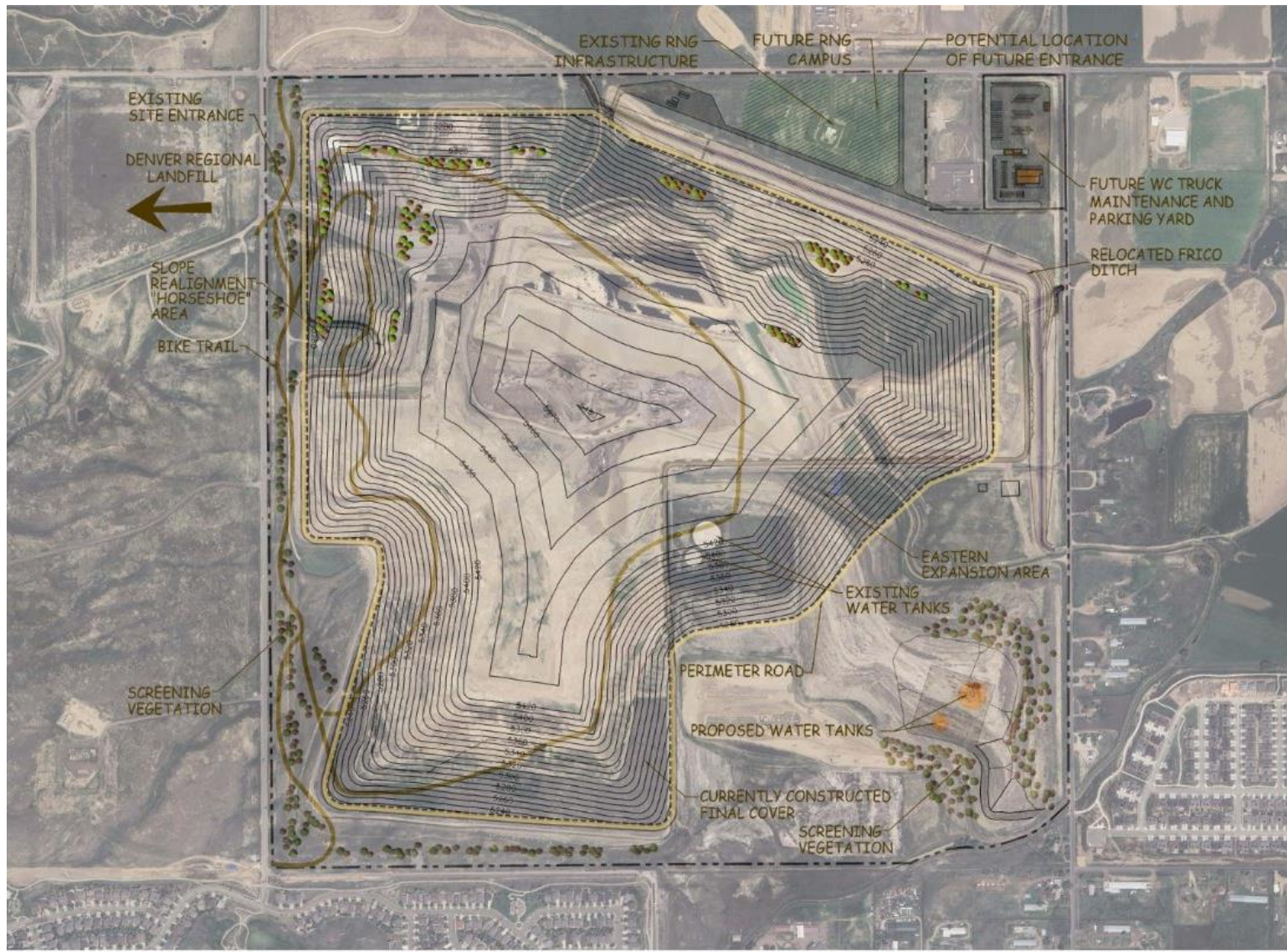


Landfill Footprint and Phasing – East Side

The recommendation of the Task Force is to:

- Change the FRL permitted footprint on the east side to include 36-acres within the FRL property and increase the buffer between the east limits of the waste footprint and County Road 7 by decreasing the permitted limit of waste by 5 acres on the east side for a net increase of ~31 acres.
- Relocate and increase the storage capacity of the Town of Erie water tanks in the southeastern quadrant of the FRL property.

Proposed Changes to Permitted Landfill Footprint





Community Benefits

- Waste Connections intends to invest in the community by developing amenities on or around the landfill property.
- LTF members discussed the different amenities to include on the property.



Community Benefits

The recommendation of the Task Force is to:

- Expand renewable energy sources, reduce greenhouse gas emissions, and introduce waste diversion options.
- Develop recreational trails and outdoor opportunities, and safe access to them.
- Plant native vegetation and foster an environment that supports wildlife.
- Continue to partner with the Erie community for ongoing input into community-facing initiatives.



Look Ahead and Adjourn

Contact

Please direct any questions or comments about the Task Force and the recommendations to:

David Frank

Environmental Services Director, Town of Erie

dfrank@erieco.gov

303-926-2716



Thank you!