



Legislation Details (With Text)

File #: 19-174 **Version:** 1 **Name:**
Type: Consent Agenda **Status:** Agenda Ready
File created: 3/27/2019 **In control:** Town Council
On agenda: 5/14/2019 **Final action:**
Title: A Resolution of the Board of Trustees of the Town of Erie Approving the Purchase of a Ford F550 Bucket Truck from Altec Industries for an Amount not to Exceed \$138,913
Sponsors:
Indexes:
Code sections:
Attachments: 1. Resolution, 2. Contract

Date	Ver.	Action By	Action	Result
------	------	-----------	--------	--------

SUBJECT: CONSENT AGENDA

A Resolution of the Board of Trustees of the Town of Erie Approving the Purchase of a Ford F550 Bucket Truck from Altec Industries for an Amount not to Exceed \$138,913

DEPARTMENT: Public Works

PRESENTER: Todd Fessenden, Public Works Director

FISCAL INFORMATION:

Cost as Recommended: \$ 138,913
Balance Available: \$ 0
Budget Line Item Number: 100-70-710-601200
New Appropriation Required: Yes

STAFF RECOMMENDATION:

Approve Resolution authorizing said purchase, authorizing the appropriate Town staff to execute purchase, and authorizing Staff to expend funds.

SUMMARY AND BACKGROUND OF SUBJECT MATTER:

The Town currently hires contractors or rents bucket trucks/lifts to perform a variety of maintenance tasks. Purchasing a bucket truck would provide the Town with a valuable asset to facilitate work that is currently not possible without hiring contractors or renting equipment. This would improve employee safety, reduce (and hopefully eliminate) employee leave due to injury, and improve staff's ability and efficiency in conducting preventive maintenance programs.

The Ford F550 (chassis) Model AT41M Articulating Telescopic Aerial Device, allows a single operator to safely access aerial assets for maintenance and on-call situations. With this purchase, Town staff can perform additional tasks including:

- **Streets:** repairs to above ground level traffic signal components and signage, traffic signal camera cleaning during snow events for improved detection, repair and maintenance of school zone speed awareness signs, maintenance of overhead street lighting (The Town will be responsible for maintenance of street lighting upon final acceptance of the new Erie Parkway/Coal Creek bridge),

- **Water/Wastewater Treatment:** tank access and general high level building maintenance,
- **Facilities:** HVAC and electrical work, flag pole maintenance, painting, and repair/maintenance of downspouts, collection boxes, gutters and other maintenance,
- **Parks:** Tree trimming and holiday decorations including street banners.

Maintenance staff will use this truck in a variety of ways improving efficiency and reducing costs. In addition, safety would improve, reducing the time maintenance staff spend working from extension ladders.

The Town obtained a bid from Sourcewell, formerly National Joint Powers Alliance (NJPA). Sourcewell performs competitive bidding for government agencies to use. *“For over 40 years, Sourcewell has helped government, education, and nonprofit agencies operate more efficiently. We help them save time and money with contract purchasing solutions <<https://www.sourcewell-mn.gov/cooperative-purchasing>> that are solicited nationally.”*

Sourcewell awarded the bid for a Ford F550 (chassis) Model AT41S Articulating Telescopic Aerial Device (bucket truck) to Altec Industries (Bid #012418-ALT).
<https://www.sourcewell-mn.gov/cooperative-purchasing/012418-alt#tab-contract-documents>
<<https://www.sourcewell-mn.gov/cooperative-purchasing/012418-alt>>). The total base price plus options projected cost for this truck/equipment is \$138,913. The current lead time to receive the equipment from the Vendor is approximately eleven months from the Board's approval.

ATTACHMENTS:

- a. Resolution
- b. Contract



AT37/41/48S

AT37/41/48S**FEATURES**

- Telescopic Articulating Non-Insulating Aerial Device
- Compensated Articulating Arm
- 4-Function, Single Handle Upper Control
- Hydraulic Boom Extension
- Continuous Rotation
- Single 2-Man, Aluminum Platform with 180° Rotation
 - ✧ 60 x 36 x 45 in (1524 x 914.4 x 1143 mm)
 - ✧ 440 lb (200 kg) Capacity with Material Handling
 - ✧ 500 lb (227 kg) Capacity without Material Handling
- Hydraulic Platform Leveling
- Full Pressure, Open Center Hydraulic System
- Emergency Stop Valves at Upper and Lower Control Stations
- Tool Circuit at Platform
- Back-up Alarm
- Outrigger Motion Alarm and Outrigger Interlocks
- Easily Mounts on 19,500 lb (8,845 kg) GVWR Chassis

OPTIONS

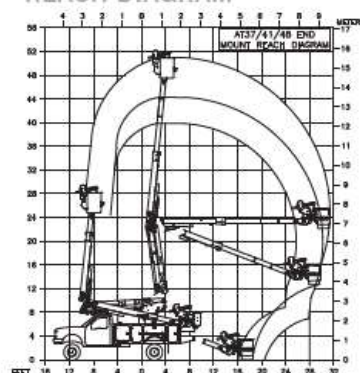
- Material Handling System up to 1000 lb (454 kg) Capacity
- 110V Outlet at the Boom Tip
- Secondary Stowage System- 12 VDC Electric Powered, Includes Pump and Motor, Operates From Truck Battery
- Engine Start/Stop- From the Platform, Captive-air
- Manual, Extra Operators and Maintenance/Parts
- Power Distribution Module
- Dri-Dek® on the Floor of the Platform
- Sign Holder Pegs on Platform

Recommended safety features and additional accessories available through Altec Supply include a platform liner, fall protection system, wheel chocks and outrigger pads.

CONFIGURATIONS

	AT37S	AT41S	AT48S
Ground to Bottom of Platform	36.0 ft (10.98 m)	40.5 ft (12.33m)	47.0 ft (14.31 m)
@ Reach From Centerline	7.9 ft (2.42 m)	8.3 ft (2.54 m)	7.3 ft (2.22 m)
Working Height	41.0 ft (12.51 m)	45.5 ft (13.85m)	52.0 ft (15.84 m)
Maximum Side Reach:			
End-Mount	26.1 ft (7.95 m)	30.5 ft (9.29 m)	31.7 ft (9.67 m)
@ Platform Height	17.0 ft (5.18 m)	17.0 ft (5.18 m)	21.6 ft (6.57 m)
Stowed Travel Height*	10.7 ft (3.26 m)	10.7 ft (3.26 m)	10.7 ft (3.26 m)
Platform Capacity			
Without Material Handling	500 lb (226.80 kg)	500 lb (226.80 kg)	500 lb (226.80 kg)
With Material Handling	440 lb (200 kg)	440 lb (200 kg)	440 lb (200 kg)
Lower Boom Articulation	-25 to 85°	-25 to 85°	-25 to 85°
Articulating Arm Articulation	-3 to 82°	-3 to 82°	-3 to 82°
Rotation	Continuous	Continuous	Continuous

*Based on a 40 in (1016 mm) chassis frame height.
ANSI A92.2 Compliant

REACH DIAGRAM



ALTEC
2075 Edsel Ln, Corydon, Indiana, 471122168

2019 F-550 Chassis, Regular Cab
4x4 SD Regular Cab 169" WB DRW XL(F5H)
Price Level: 920 Quote ID: 191208

Selected Equipment & Specs

Dimensions

- * Exterior length: 287.2"
- * Exterior width: 80.0"
- * Wheelbase: 169.0"
- * Rear track: 74.0"
- * Rear tire outside width: 93.9"
- * Front legroom: 43.9"
- * Front hiproom: 62.5"
- * Passenger volume: 64.6cu.ft.
- * Maximum cargo volume: 11.6cu.ft.
- * Cab to axle: 84.0"
- * Exterior height: 81.1"
- * Front track: 74.8"
- * Turning radius: 24.2'
- * Min ground clearance: 8.3"
- * Front headroom: 40.8"
- * Front shoulder room: 66.7"
- * Cargo volume: 11.6cu.ft.

Powertrain

- * 288hp 6.8L SOHC 30 valve V-10 engine with SMPI
- * federal
- * Part-time
- * Fuel Economy Cty: N/A
- * Transmission PTO provision
- * Recommended fuel : regular unleaded
- * TorqShift 6 speed automatic transmission with overdrive
- * Limited slip differential
- * Fuel Economy Highway: N/A

Suspension/Handling

- * Front Mono-beam non-independent suspension with anti-roll bar, HD shocks
- * Firm ride Suspension
- * Front and rear 19.5 x 6 argent steel wheels
- * Dual rear wheels
- * Rear DANA 130 rigid axle leaf spring suspension with anti-roll bar, HD shocks
- * Hydraulic power-assist re-circulating ball Steering
- * LT225/70SR19.5 GBSW M+S front and rear tires

Body Exterior

- * 2 doors
- * Turn signal indicator in mirrors
- * Chrome bumpers
- * Clearcoat paint
- * 2 front tow hook(s)
- * Driver and passenger power remote heated, manual folding door mirrors with turn signal indicator
- * Black door mirrors
- * Trailer harness
- * Front and rear 19.5 x 6 wheels

Convenience

- * Manual air conditioning with air filter
- * Power front windows
- * Driver and passenger 1-touch down
- * Manual tilt steering wheel
- * Day-night rearview mirror
- * Wireless phone connectivity
- * 2 1st row LCD monitors
- * Passenger visor mirror
- * Upfitter switches
- * Cruise control with steering wheel controls
- * Driver and passenger 1-touch up
- * Remote power door locks with 2 stage unlock and illuminated entry
- * Manual telescopic steering wheel
- * 911 Assist emergency SOS
- * AppLink smart device integration
- * Front cupholders
- * Driver and passenger door bins