

September 2021 Public Works Report

Front Range and Denver Regional Landfill Updates



Waste Connections has notified the Town of Erie that Denver Regional Landfill's (DRL) final cover is complete. The landfill is located south of County Road 6 and west of County Road 5. The last step in the closure is applying native grass seeding, which is planned for the week of September 27th. The final closure certification will be complete by the end of the year.

Additionally, Waste Connections has wrapped up work to bring the southwest edge of the Front Range Landfill (FRL) to its permitted height. Final seeding and straw cover is underway for the week of September 20th. Ongoing operations will occur to the north and will have much better screening from views to the south.

FRL weathered the recent storms well, and impacts were generally low due to existing on-site storm water controls.

Capital Improvement Projects

Lynn R Morgan Water Treatment Facility (WTF) Expansion & Hydroturbine

As part of performance testing we have identified an issue that needs to be resolved. Water demands have increased over the timeframe that we have designed and built this turbine. When Broomfield calls for water on this same system, a pressure drop occurs that affects the productivity of the turbine. We are working through this issue and will modify the turbine as needed.

North Water Reclamation Facility (NWRf) Expansion

Construction of this \$30+ Million project continues. We anticipate an early 2022 project completion, and have no issues to report.

Sustainability and Water Conservation

Green Business & HOA Certification Program

Erie's third HOA, Cottages at Erie Village, completed their Green HOA Scorecard and are planning to enroll in EnergySmart for their residents, install high efficiency irrigation nozzles and apply for the Northern Water landscape renovation grant as a result.

Energy

Energy Action Plan updates are nearly complete. The third and last workshop with all stakeholders was held Sept. 1. Town Hall received an American Society of Heating, Refrigerating and Air-Conditioning Engineers (ASHRAE) Level 1 Report (similar to PD earlier this year) to outline any and all energy efficiency activities that we could make.

Transportation

Electric vehicle charging stations have offset 577 kg of greenhouse gas emissions in their first two months of activation. This equates to 15 trees planted and reducing GHG emissions for 10 years.

Here's how EV charging has helped:



You've avoided
577 kg
greenhouse gas emissions



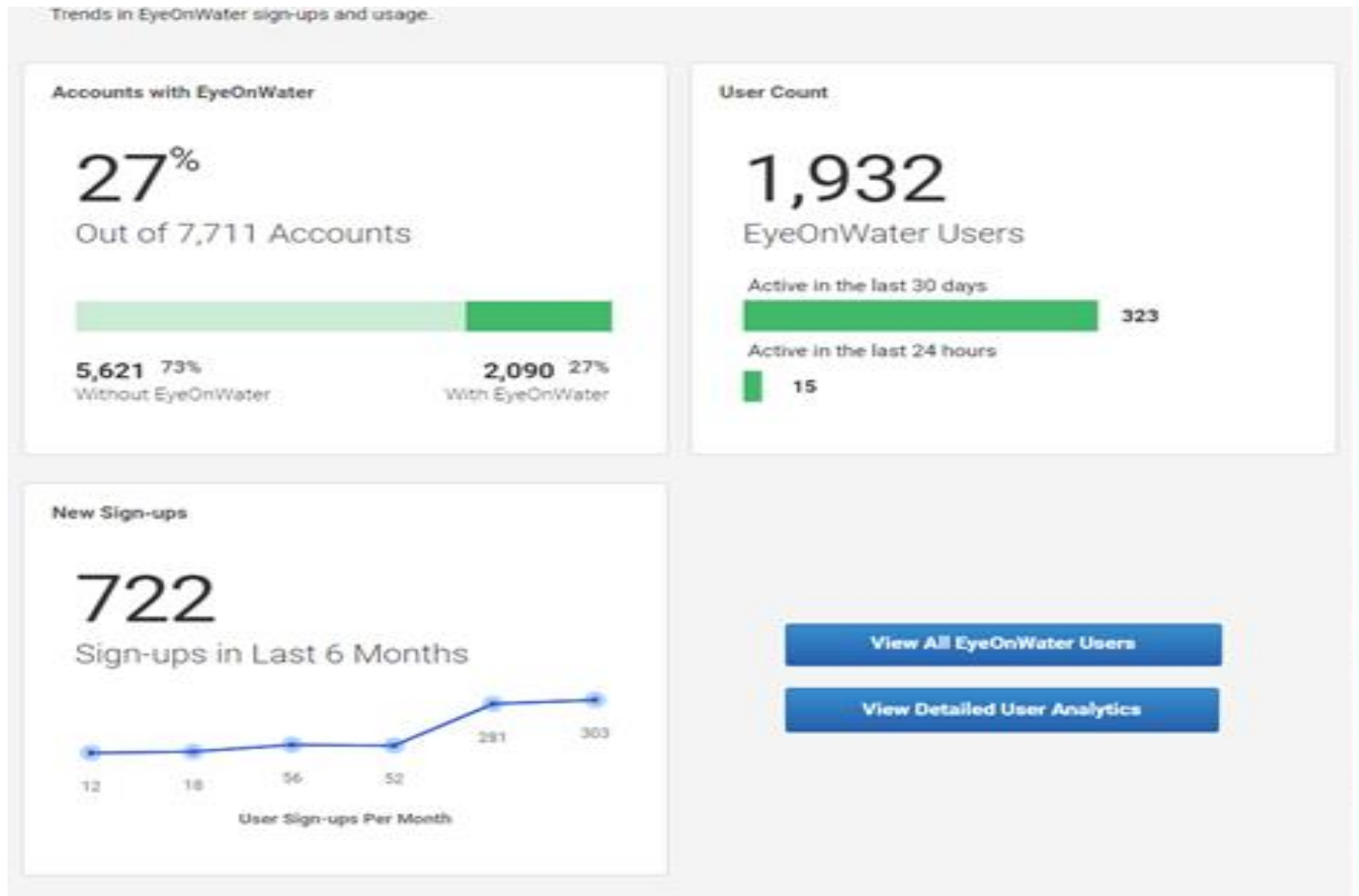
that's like planting
15 trees
and letting them
grow for 10 years

Waste, Recycling, & Composting

- Community engagement and HOA surveying is well underway and the results and program/policy recommendations are scheduled for a study session in October.
- Fall Clean-up Event occurred Sept. 11. Landfill Vouchers were issued to residents to be used Sept. 11-18. Leaf and pumpkin composting events are scheduled for Nov. 6 and Nov. 14. Tree composting is accepted from Dec. 26-Jan. 16.
- Town Hall Staff recycled 154 pounds of batteries so far this year with collection bins in the break rooms.

Water Efficiency

The EyeOnWater app had the most signups ever so far in August due to education and outreach efforts. We began the year with only 16% of residents signing up and we are now at 27% and counting. 84% of all Slow the Flow appointments, 70% of smart control clocks, and 95% of rain sensor direct installations have been completed.



Lynn R. Morgan Water Treatment Facility (WTF)

Annual Daily Average Flow:

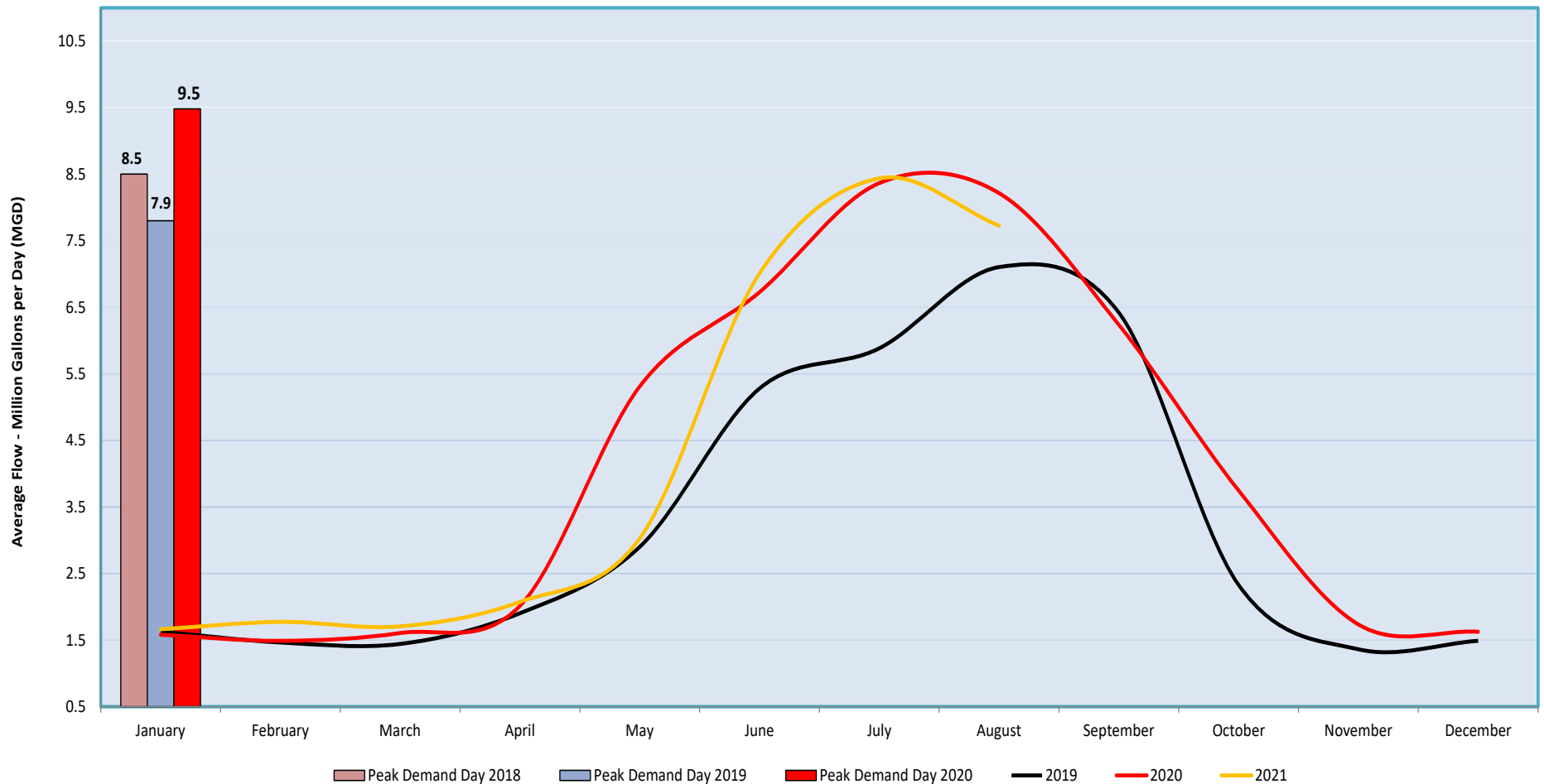
2018 – 3.4 MG

2019 – 3.3 MG

2020 – 4.1 MG

July 2021 maintains the record for the highest monthly average flows at 10 MG, while November 2019 had the lowest flows at 1.36 MG.

Average Monthly Production



Annual Daily Gallons Per Capita per Day (GPCD):

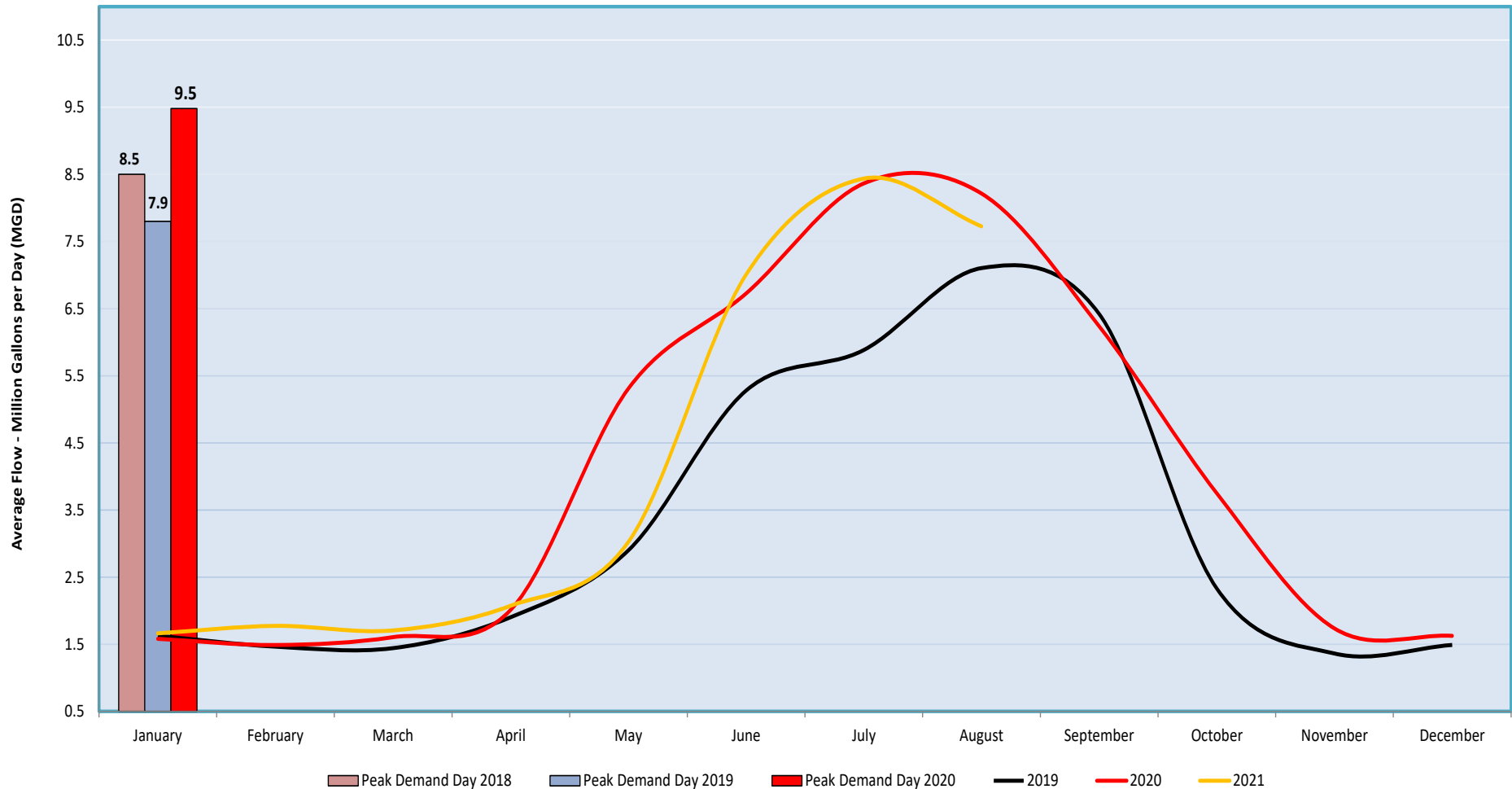
2018 – 131 GPCD

2019 – 118 GPCD

2020 – 143 GPCD

July 2020 had the highest average daily usage at 294 gallons GPCD. November 2019 had the lowest usage at 50 GPCD. Indoor demands during winter remain relatively stable. Average daily usage took a big jump in 2020 due to COVID and drought. Reducing summer irrigation and increasing reuse water availability will reduce reliance on treated water supplies in the future.

Average Monthly Production



North Water Reclamation Facility

Annual Daily Average Flow:

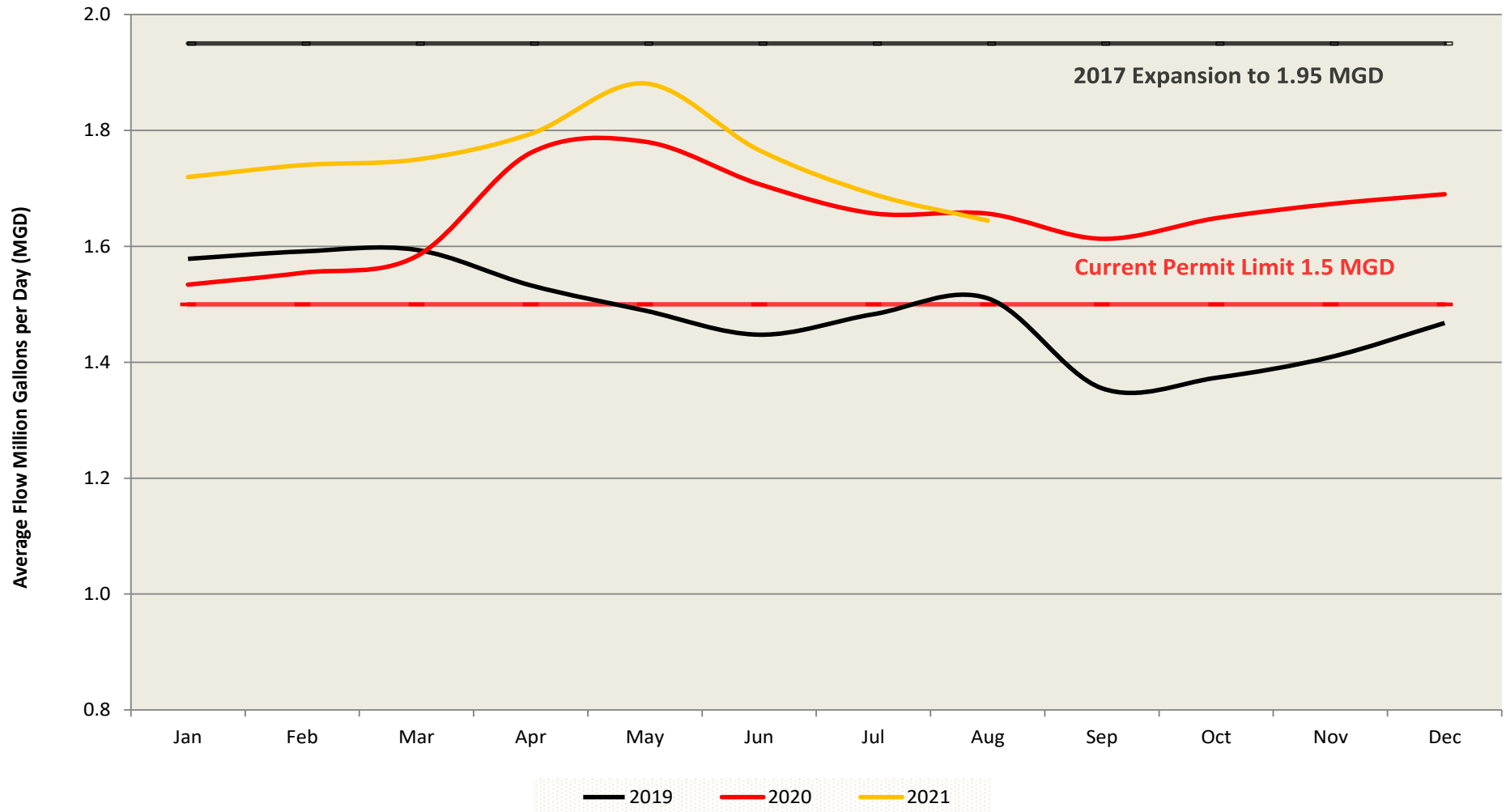
2018 – 1.49 MG

2019 - 1.49 MG

2020 - 1.66 MG

September 2019 had the lowest average flow of 1.36 million gallons per day (MGD). May 2021 set a high average monthly flow of 1.88 MGD. We have had conversations with staff at CDPHE and are aware that they are finally working on our permit renewal (5 years overdue), this could be a chance to get some of these issues corrected and staff and our consultants and legal team are working diligently on this. Flows are up with new development coming online.

Average Monthly Flows



Annual Daily Gallons Per Capita per Day (GPCD):

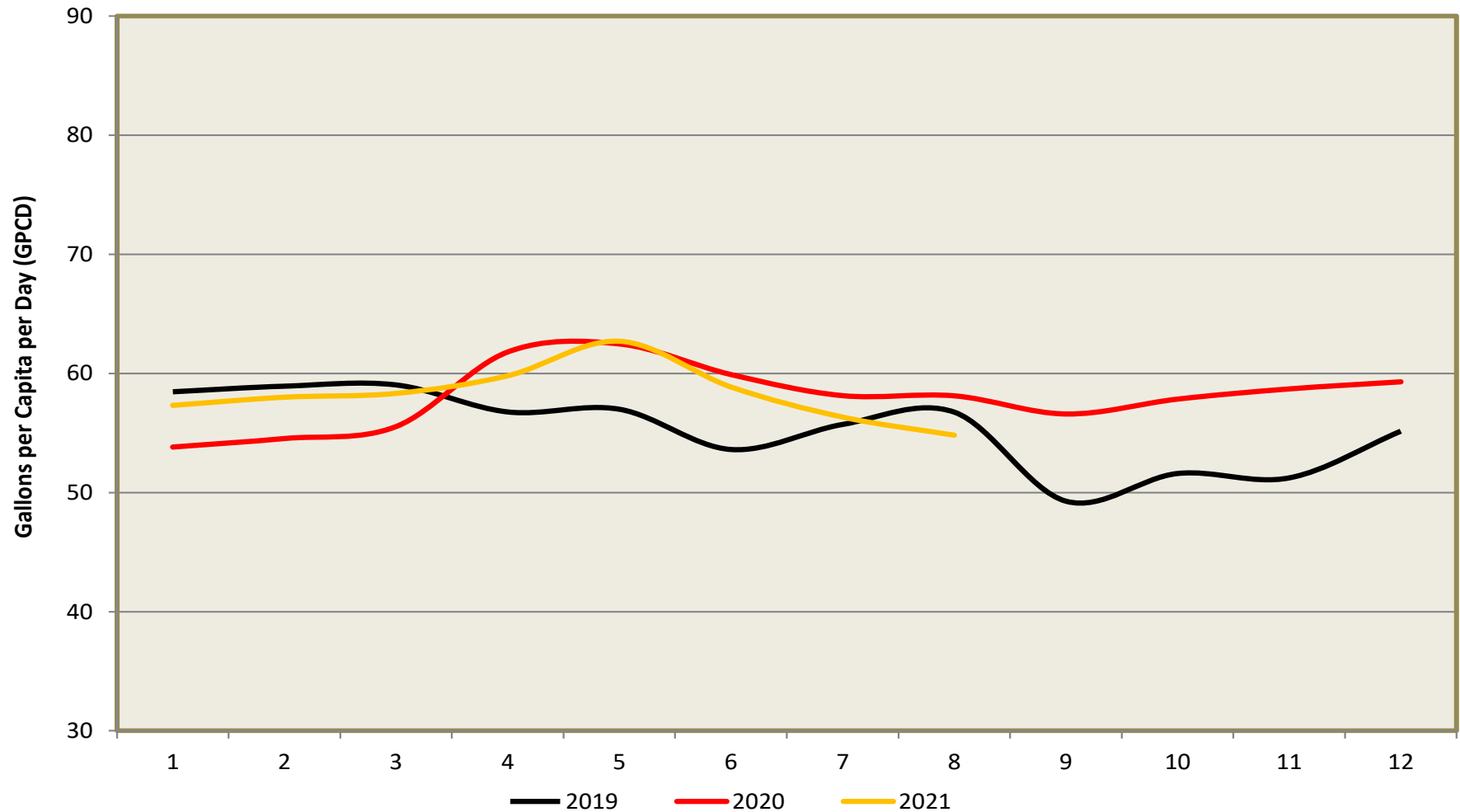
2018 - 58 GPCD

2019 - 55 GPCD

2020 - 58 GPCD

This graph depicts customer indoor water usage. May 2021 had the highest usage at 63 GPCD. September 2019 had the lowest usage at 49 GPCD. Fall, with relatively little precipitation and dropping groundwater levels, is a good indicator of true daily flows.

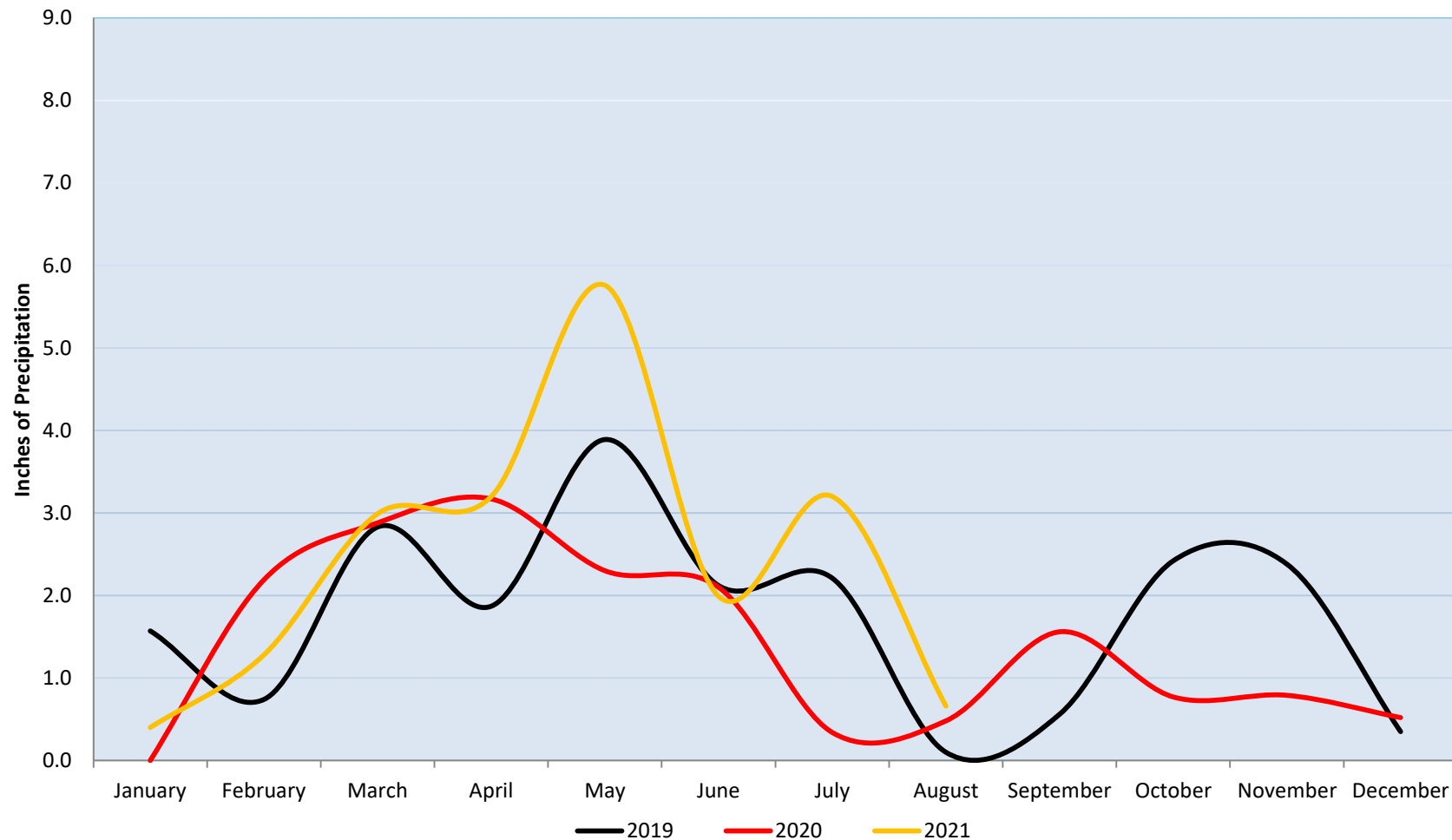
Average Daily Usage Per Capita



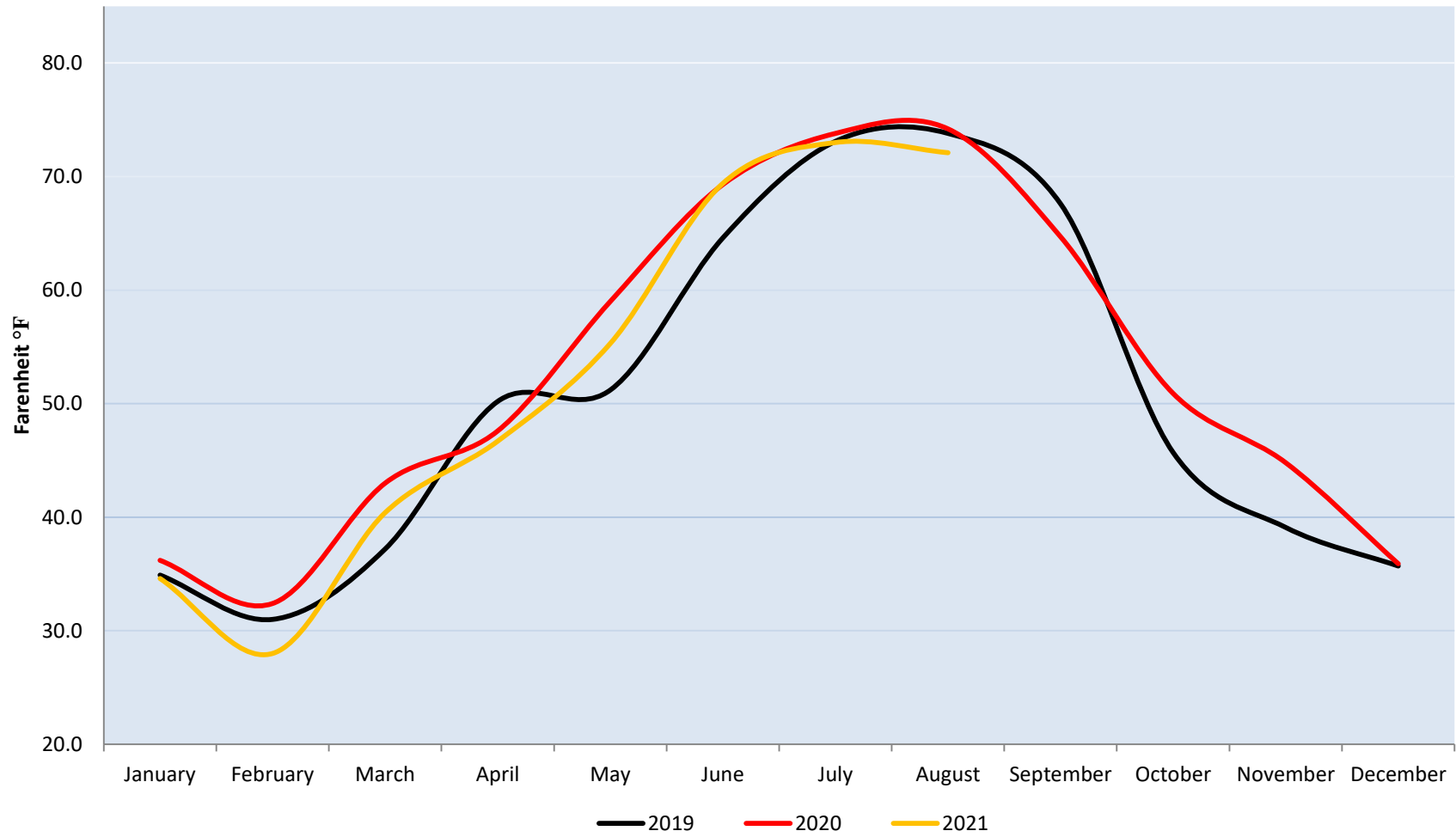
Monthly Data for Boulder – National Oceanic and Atmospheric Administration (NOAA) & Natural Resource Conservation Service (NRCS)

Mixing it up this month with new broader national graphics. NOAA is predicting 40-50% chance of below precipitation and 40 – 50 % chance of above normal temperatures through the end of the month. Drought conditions continue to look favorable for the Front Range and have moved in a positive direction state-wide. Given the Town and much of the Front Range relies on Western Slope water supplies, this is still a concern and becoming a much larger issue across the western half of the US. National news has been focused on Colorado River shortages as well.

Precipitation



Mean Temperature



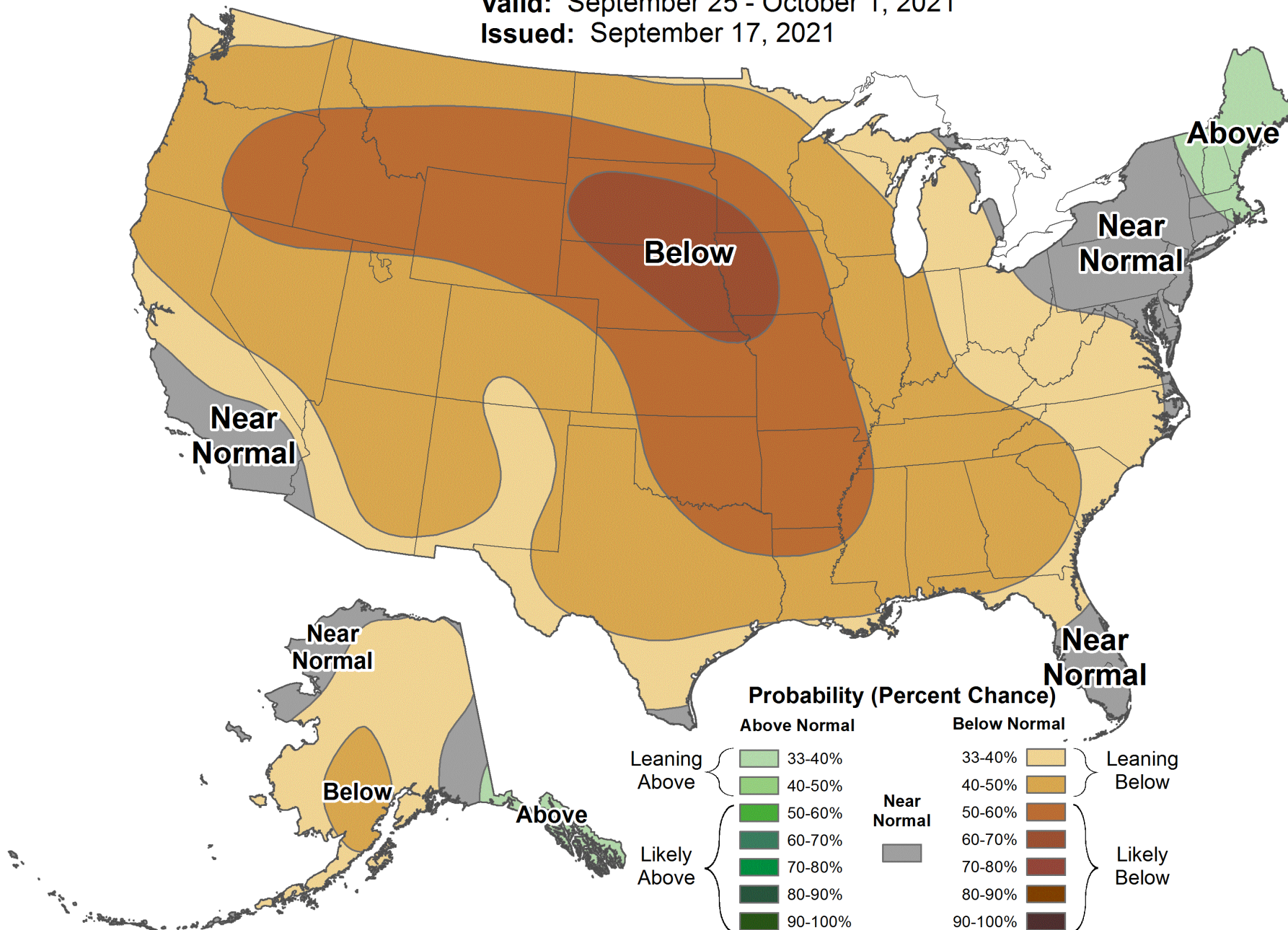


8-14 Day Precipitation Outlook



Valid: September 25 - October 1, 2021

Issued: September 17, 2021



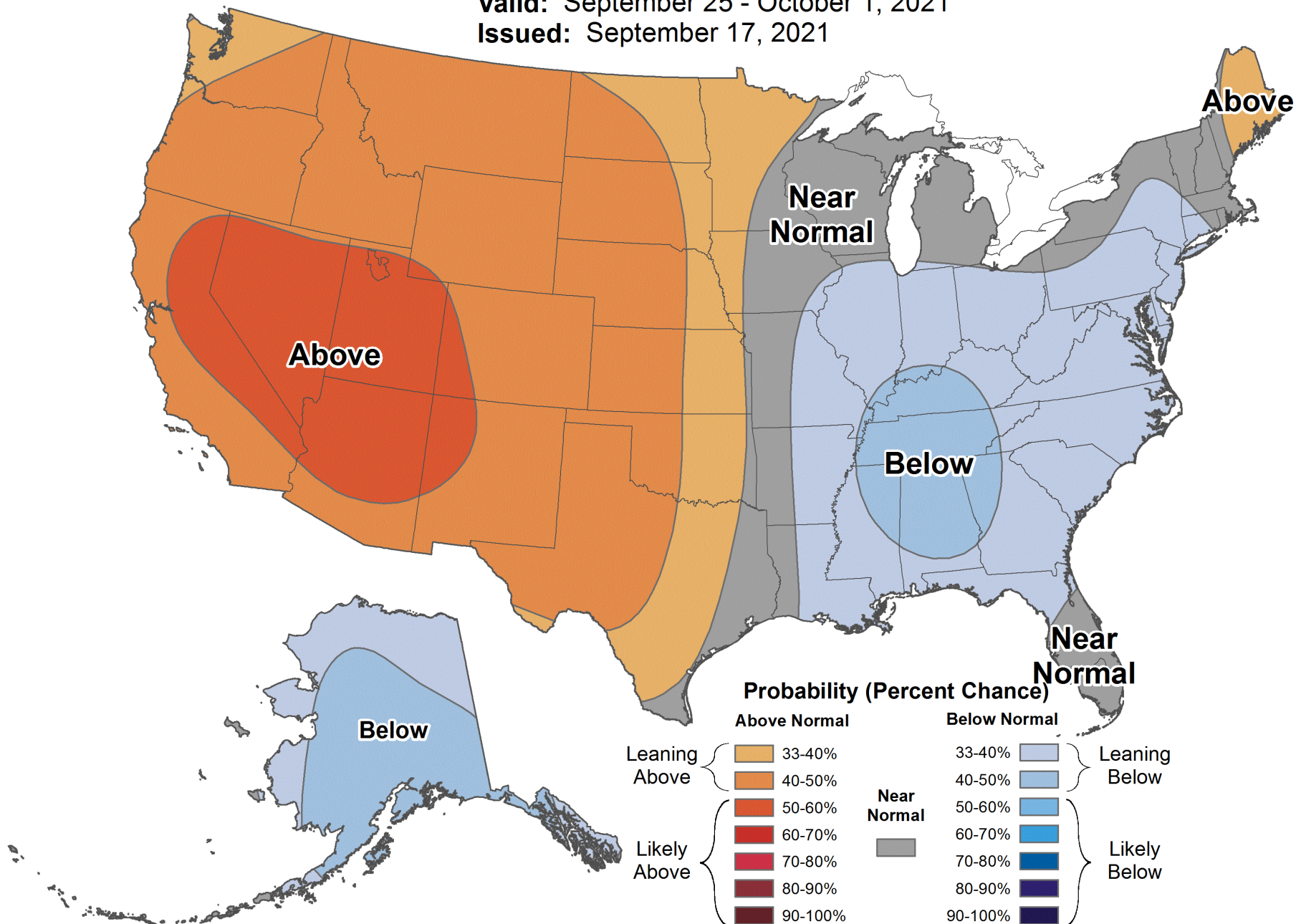


8-14 Day Temperature Outlook



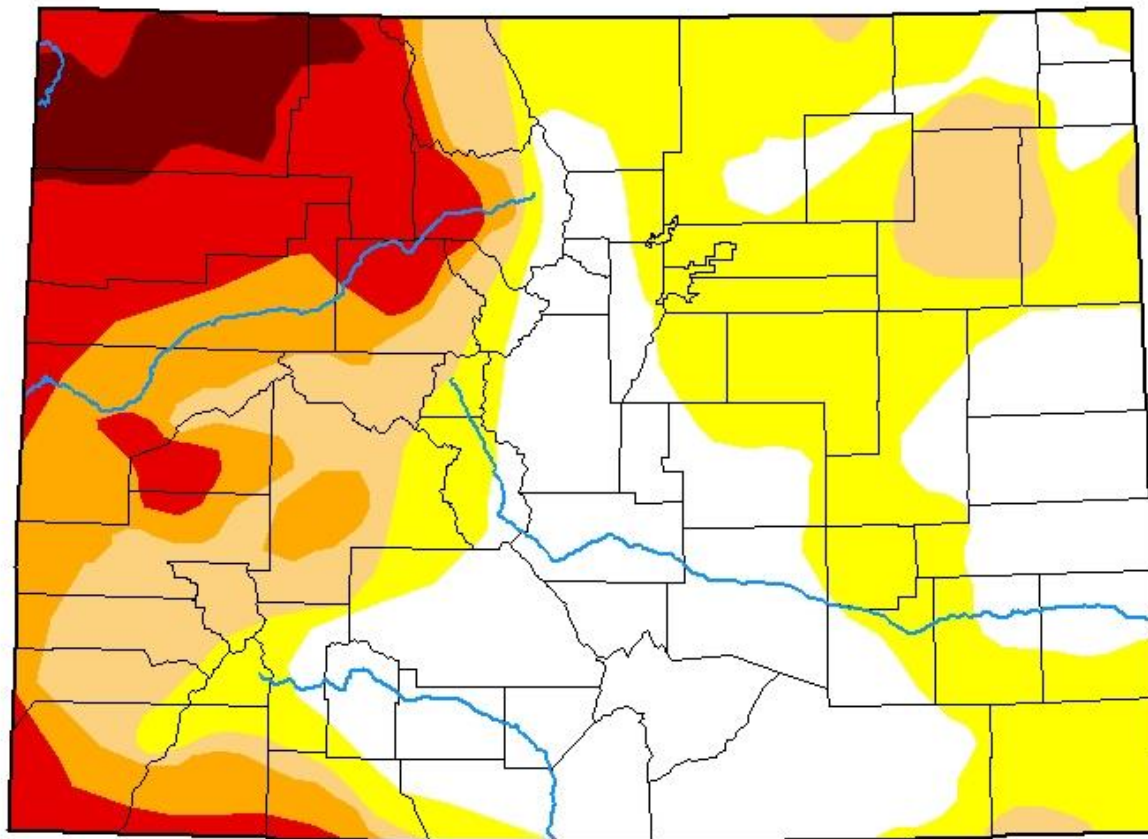
Valid: September 25 - October 1, 2021

Issued: September 17, 2021







U.S. Drought Monitor Colorado

September 14, 2021
(Released Thursday, Sep. 16, 2021)
Valid 8 a.m. EDT



Intensity:

-  None
-  D0 Abnormally Dry
-  D1 Moderate Drought
-  D2 Severe Drought
-  D3 Extreme Drought
-  D4 Exceptional Drought

The Drought Monitor focuses on broad-scale conditions. Local conditions may vary. For more information on the Drought Monitor, go to <https://droughtmonitor.unl.edu/About.aspx>

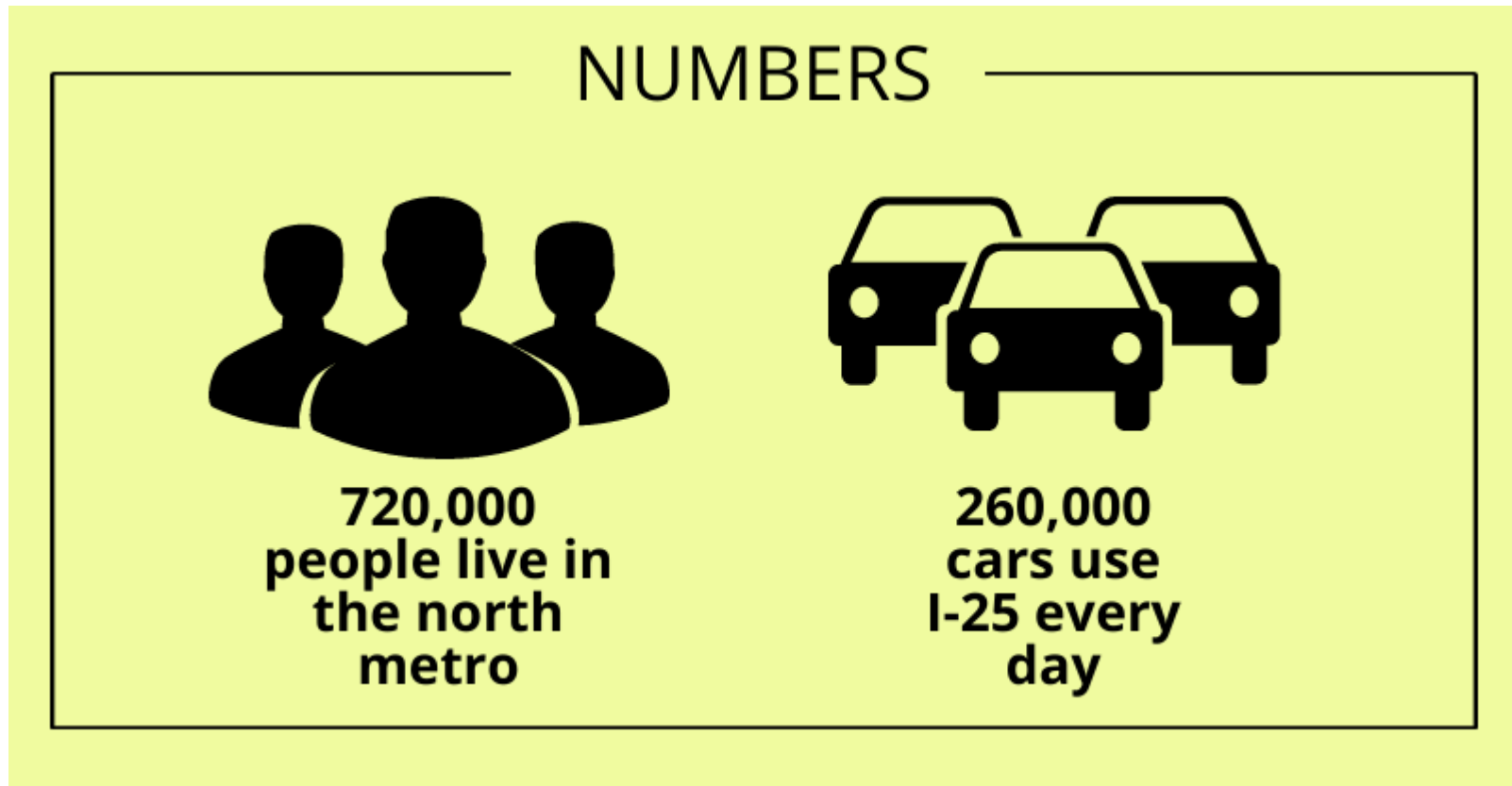
Author:

Brad Rippey
U.S. Department of Agriculture



droughtmonitor.unl.edu

Transportation & General Updates



Transportation and Transit

- There are many efforts underway given the indication that the new Federal Administration is pro-transportation and looking to invest significantly in infrastructure.
- The Northwest MCC is focusing on GHG reduction strategies in an effort to create regional coordination.
- The Town is working with Broomfield to explore options to install EV chargers at the I 25/SH7 Mobility Hub, which continues to be under design by CDOT.