

## May 2021 Public Works Report

### Front Range and Denver Regional Landfill Updates

Waste Connections has notified the Town of Erie that they have begun the Denver Regional Landfill's (DRL) final closure activities. The landfill is located south of County Road 6 and west of County Road 5. The site closure is roughly 50% complete. The last step in the closure is the re-grading and applying native grass seeding, the seeding is planned for fall.

Additionally, Waste Connections is wrapping up work to bring the southwest edge of the Front Range Landfill (FRL) to its permitted height. Upon completion, this location will also be seeded and should help in shielding view of ongoing operations directly behind that area and currently visible from the south, this is anticipated to occur in summer or fall, depending on weather conditions. Wet conditions currently are delaying this seeding activity.



## Capital Improvement Projects

### **Lynn R Morgan Water Treatment Facility (WTF) Expansion & Hydroturbine**

Construction of the hydroturbine facility continues, with an anticipated start date of summer 2021. The building is up and the turbine is being constructed in the Seattle area. We anticipate having it up and running in late June.

### **North Water Reclamation Facility (NWRf) Expansion**

Construction of this \$30+ Million project continues. We are working closely with the Front Range Eagle Studies to understand and minimize disturbance to the nearby Eagles, particularly during the fledge period of June and July. The North Water Reclamation Facility is home to many forms of wildlife including eagles and other raptors, deer and even wild turkeys. We consider ourselves an integral part of the ecosystem as we work to protect aquatic life through optimizing our treatment processes and our reservoir (and the fish in it) are enjoyed by a variety of local birds.

## Sustainability and Water Conservation

### **General**

- Sustainability staff and advisory board volunteers have had a table at the Spring Cleaning Drop-off, Garden In A Box pickup, and the Town Fair this past month to hand out Water-Wise Landscaping and How-to Recycle Flyers along with over 600 Free Energy Efficiency Kits to residents who wanted to learn more about sustainability in Erie.

### **Energy**

- The Regional DOLA grant application for I-Code updates, 100% Renewable Roadmap, and EV Roadmap was rejected so options to further this work independent from DOLA's financial support is being discussed by staff. Renewable energy options for residential, commercial, and Town facilities are a high-priority and options for promoting and investing in any and all options will be organized soon.

### **Green Business & HOA Certification Program**

- This year's recognition ceremony has been scheduled for June 17<sup>th</sup> from 6-7pm at the Chamber of Commerce where a dozen HOAs and businesses will be recognized for becoming more sustainable even through the pandemic.

### **Waste, Recycling, & Composting**

- An RFQ was released for communications, community engagement, and policy development work related to the Recycling Center and residential curbside options. Qualifications are due May 20 and the awardee will be notified May 24; work will begin promptly June 1.

## **Water Efficiency**

- Water Drought and Conservation Plan updates are scheduled for adoption June 8 at the regularly scheduled Board of Trustees Meeting.
- Eye on Water smart meter video tutorials have been created and are set to release in early June to residents who have not yet downloaded the application. Only 18% of all smart metered households have downloaded this application to utilize the dashboard to monitor their water usage and be notified for any leaks.
- The 2021 Water Efficiency Programs & Rebates are well underway. The Garden in a Box pickup event was held May 12 at the Erie Ball Park parking lot. Pre-registration for the free Slow the Flow Irrigation Assessments are open and filling up quick. Once residents have completed this assessment (in 2019, 2020, or 2021), they will be eligible to sign up for the cost-share Rain Sensor and/or Smart Irrigation Control Clock Direct Installation Program.
- Updates to our billing system now include records of all water efficiency measures taken in the last three years. Sustainability and Billing Staff can now easily see who has participated in which programs over the years and will be able to advise next steps for lowering water bills and using their water most efficiently.



## Lynn R. Morgan Water Treatment Facility (WTF)

### Annual Daily Average Flow:

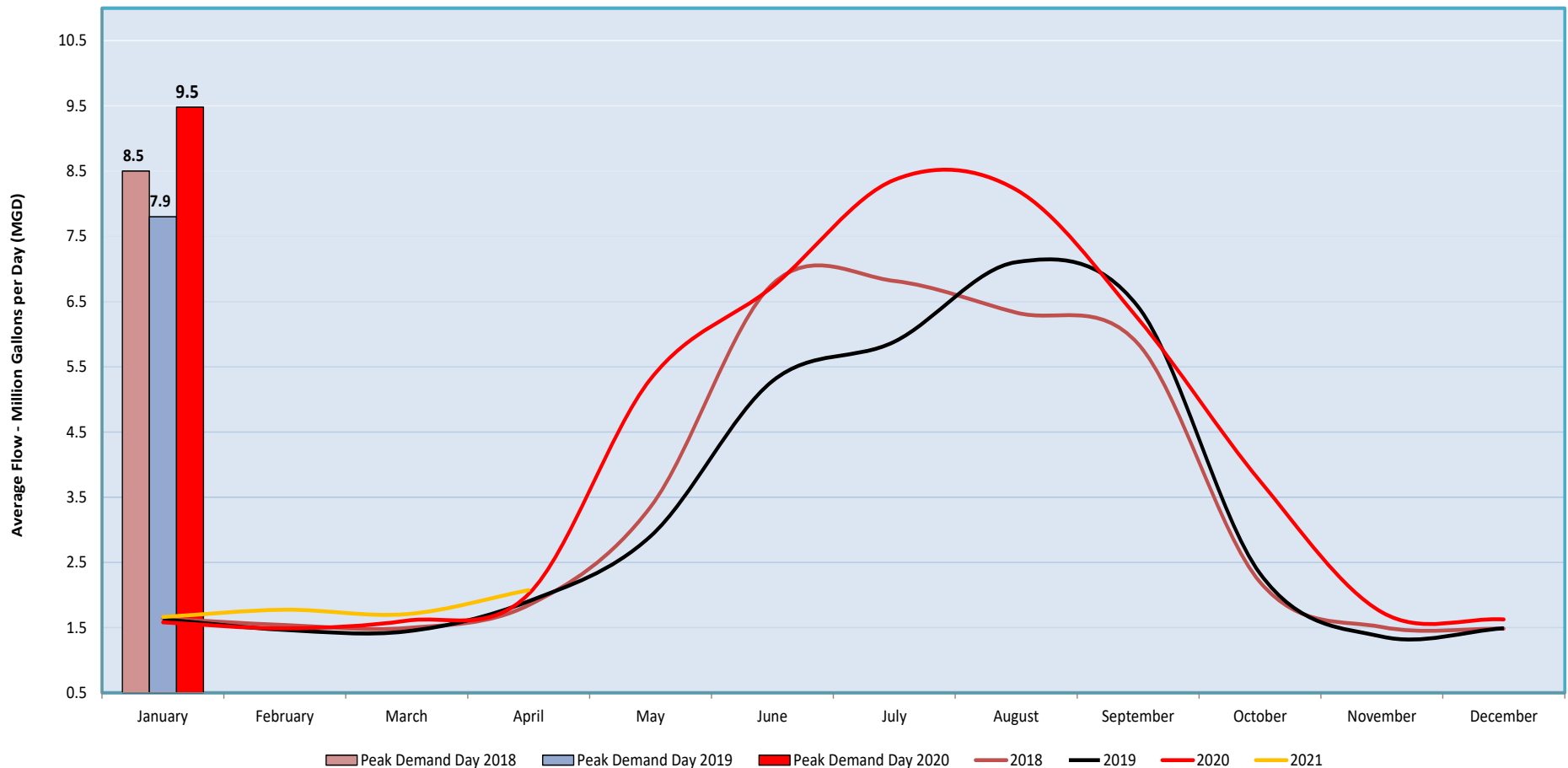
2018 – 3.4 MG

2019 – 3.3 MG

2020 – 4.1 MG

July 2020 maintains the record for the highest monthly average flows at 9.5 MG, while November 2019 had the lowest flows at 1.36 MG. Local municipalities and water providers are raising a red flag due to concerns regarding an apparent second year of drought, and wildfire impacts in the watershed.

### Average Monthly Production



### Annual Daily Gallons Per Capita per Day (GPCD):

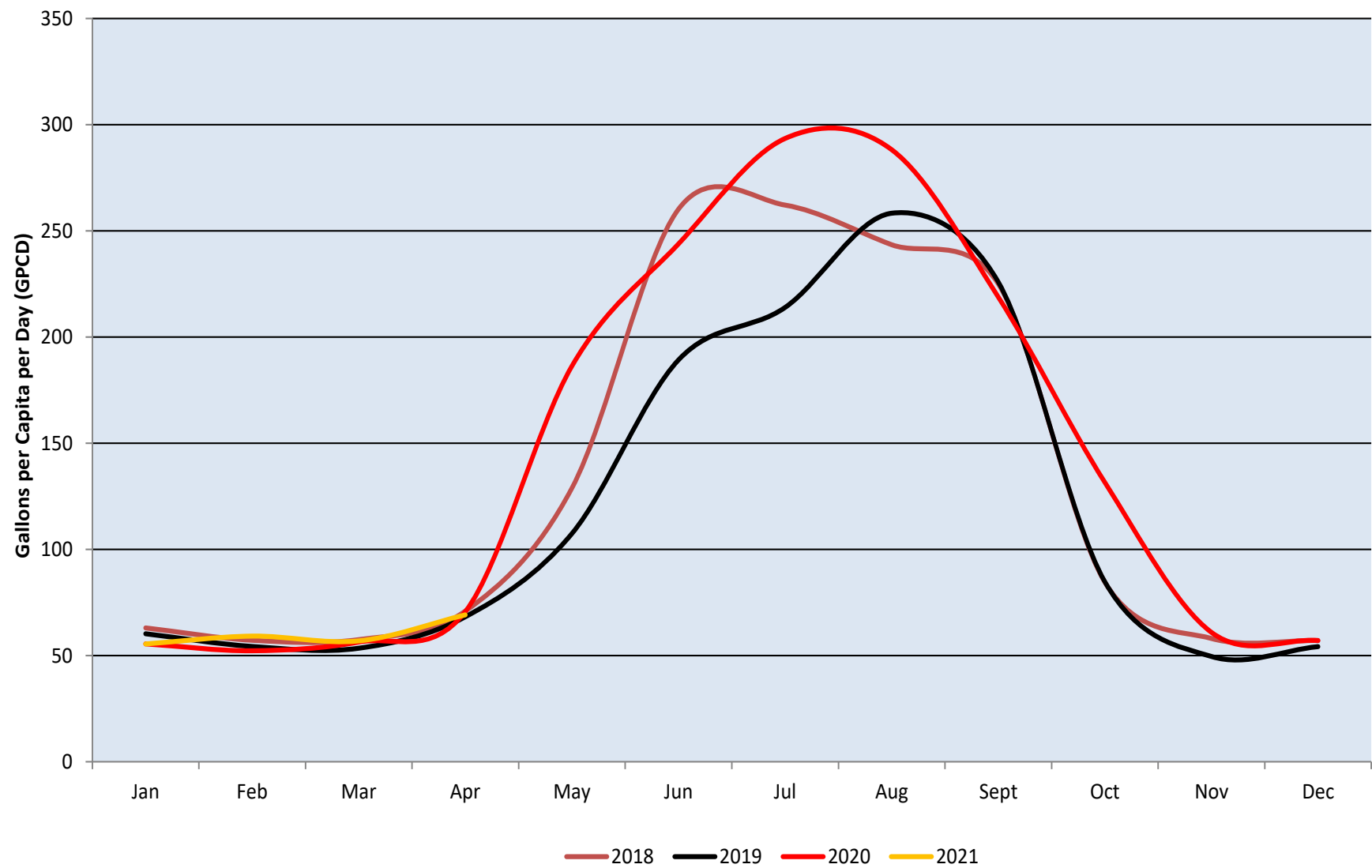
2018 – 131 GPCD

2019 – 118 GPCD

2020 – 143 GPCD

July 2020 had the highest average daily usage at 294 gallons GPCD. November 2019 had the lowest usage at 50 GPCD. Indoor demands during winter remain relatively stable. Average daily usage took a big jump in 2020 due to COVID and drought. Reducing summer irrigation and increasing reuse water availability will reduce reliance on treated water supplies in the future.

Average Daily Usage Per Capita



## North Water Reclamation Facility

### Annual Daily Average Flow:

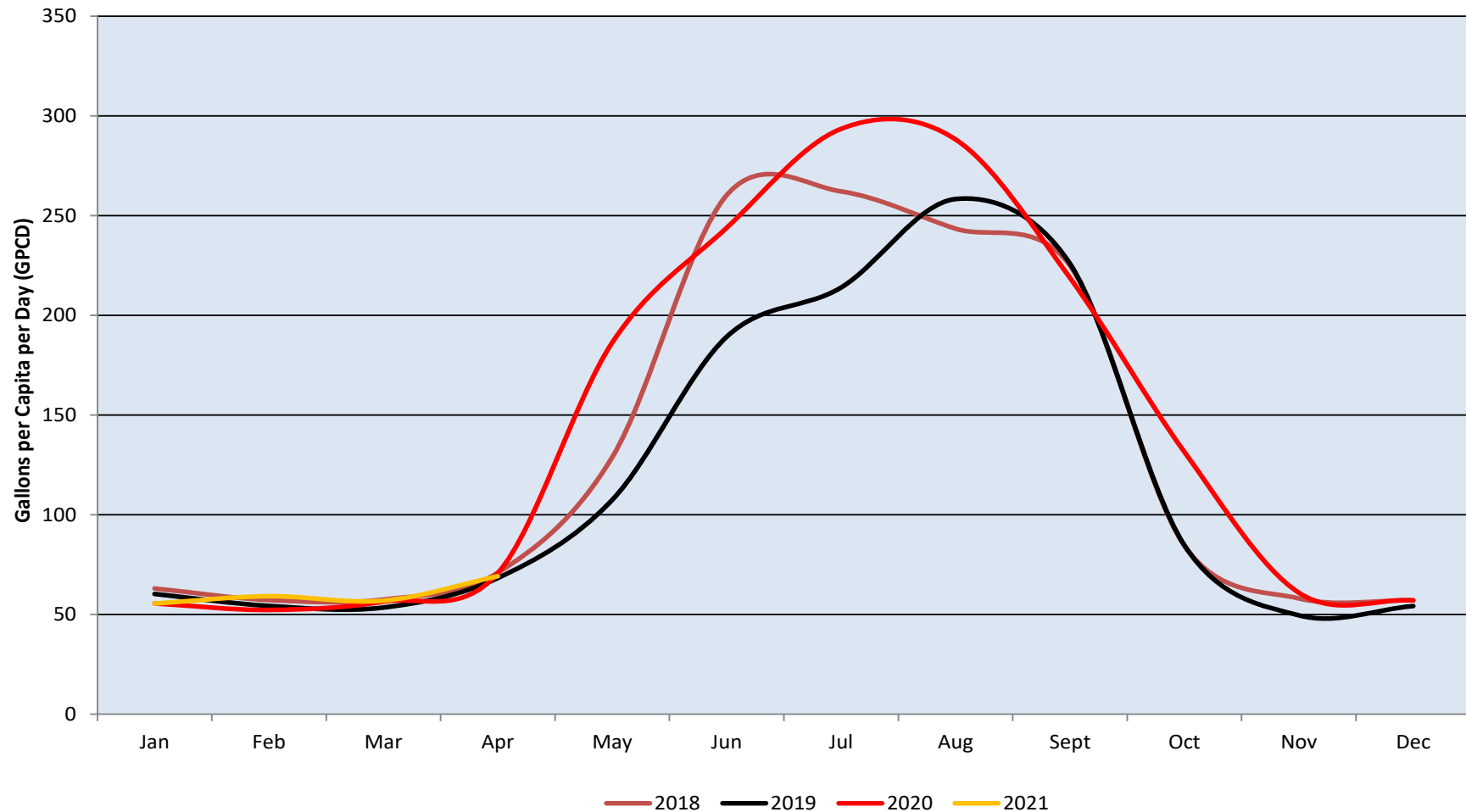
2018 – 1.49 MG

2019 - 1.49 MG

2020 - 1.66 MG

September 2019 had the lowest average flow of 1.36 million gallons per day (MGD). May 2020 set a high average monthly flow of 1.78 MGD. We continue to work through challenges with Colorado Department of Public Health and Environment (CDPHE) and their recent violation notice to the Town. We have had conversations with staff at CDPHE and are aware that they are finally working on our permit renewal (5 years overdue), this could be a chance to get some of these issues corrected and staff and our consultants and legal team are working diligently on this. Flows are up significantly, presumably due to COVID and residents working from home.

### Average Daily Usage Per Capita



**Annual Daily Gallons Per Capita per Day (GPCD):**

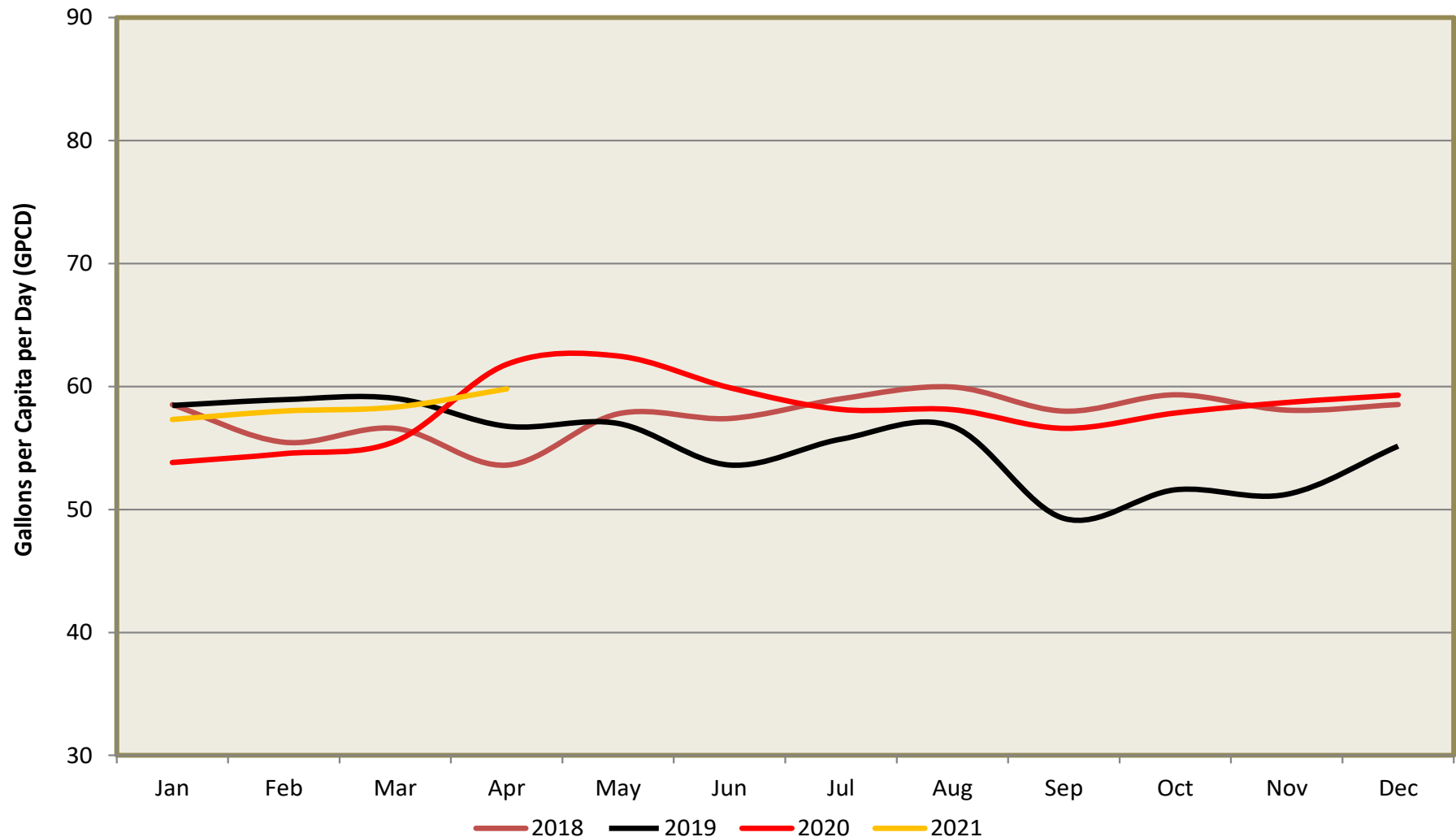
**2018 - 58 GPCD**

**2019 - 55 GPCD**

**2020 - 58 GPCD**

This graph depicts customer indoor water usage. May 2020 had the highest usage at 62 GPCD. September 2019 had the lowest usage at 49 GPCD. Fall, with relatively little precipitation and dropping groundwater levels, is a good indicator of true daily flows.

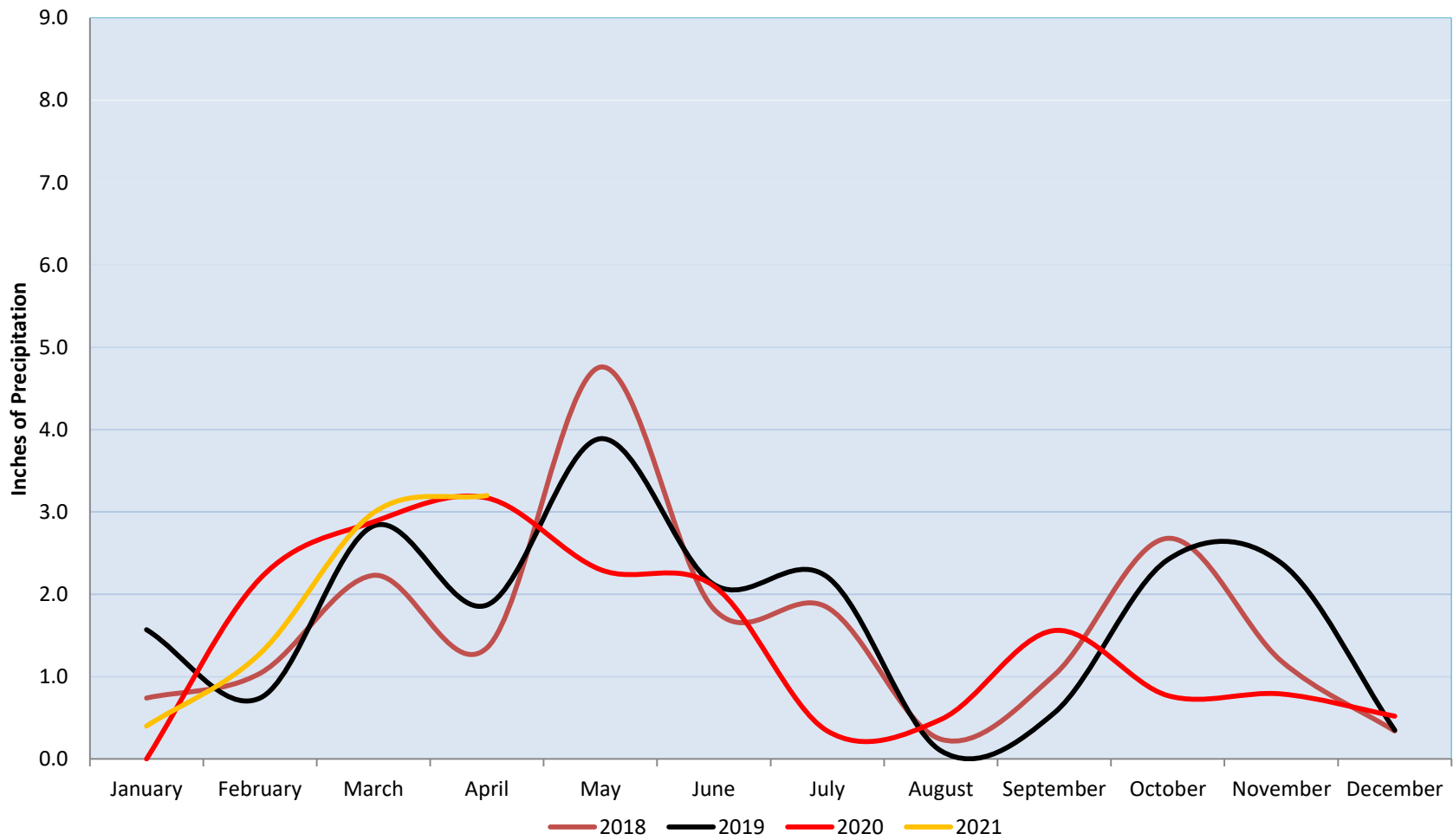
## Average Daily Usage Per Capita



## Monthly Data for Boulder – National Oceanic and Atmospheric Administration (NOAA) & Natural Resource Conservation Service (NRCS)

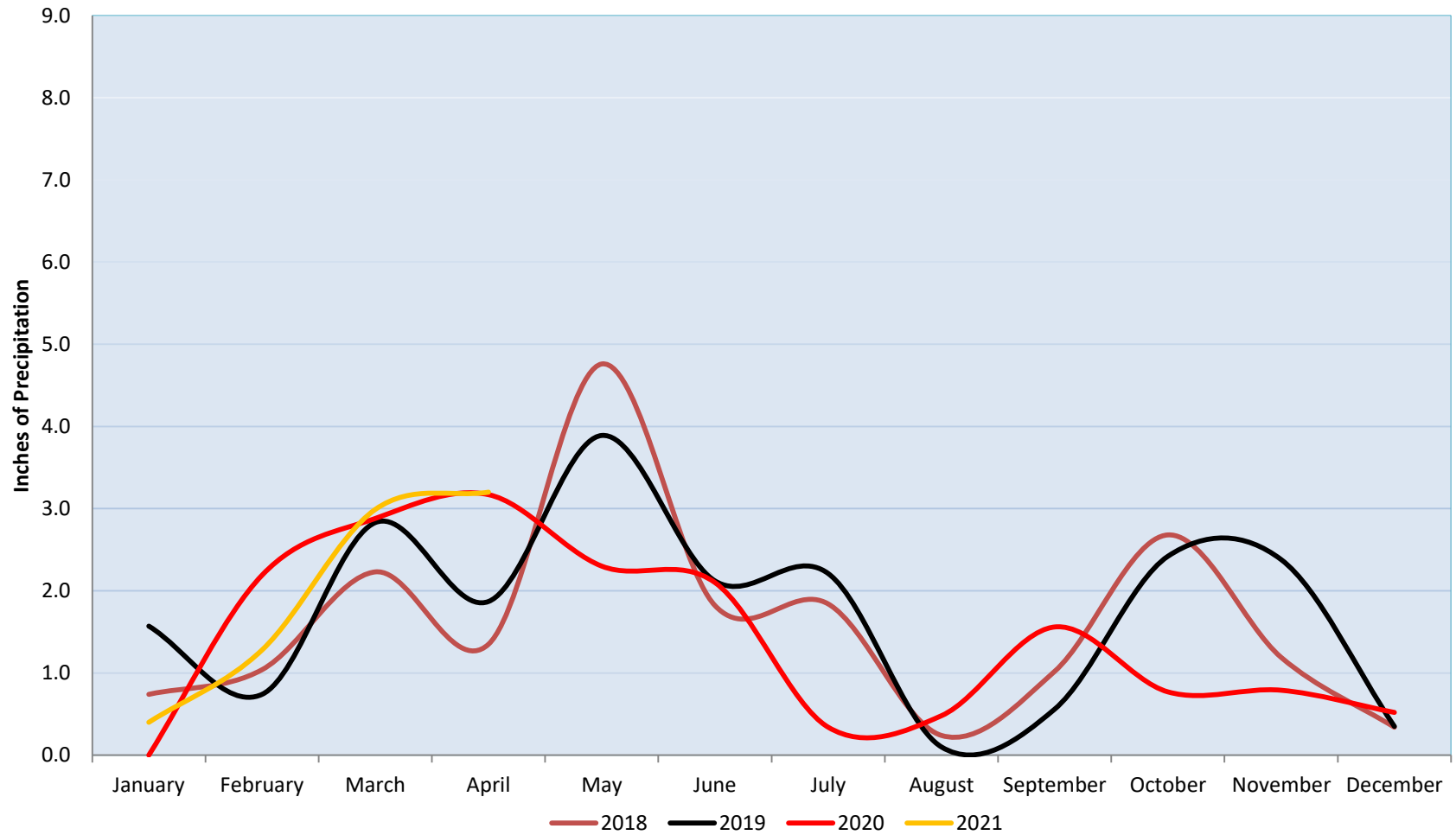
NOAA is predicting 33% below normal precipitation and 40% above normal temperatures through the end of the month. Drought conditions have improved markedly in the state due to recent precipitation, however the western half of the state is still seeing significant drought. Given the Town and much of the Front Range relies on Western Slope water supplies, this is still a concern.

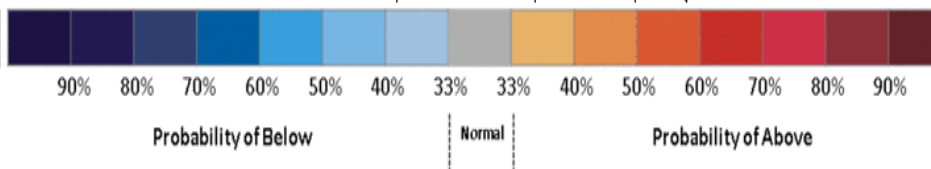
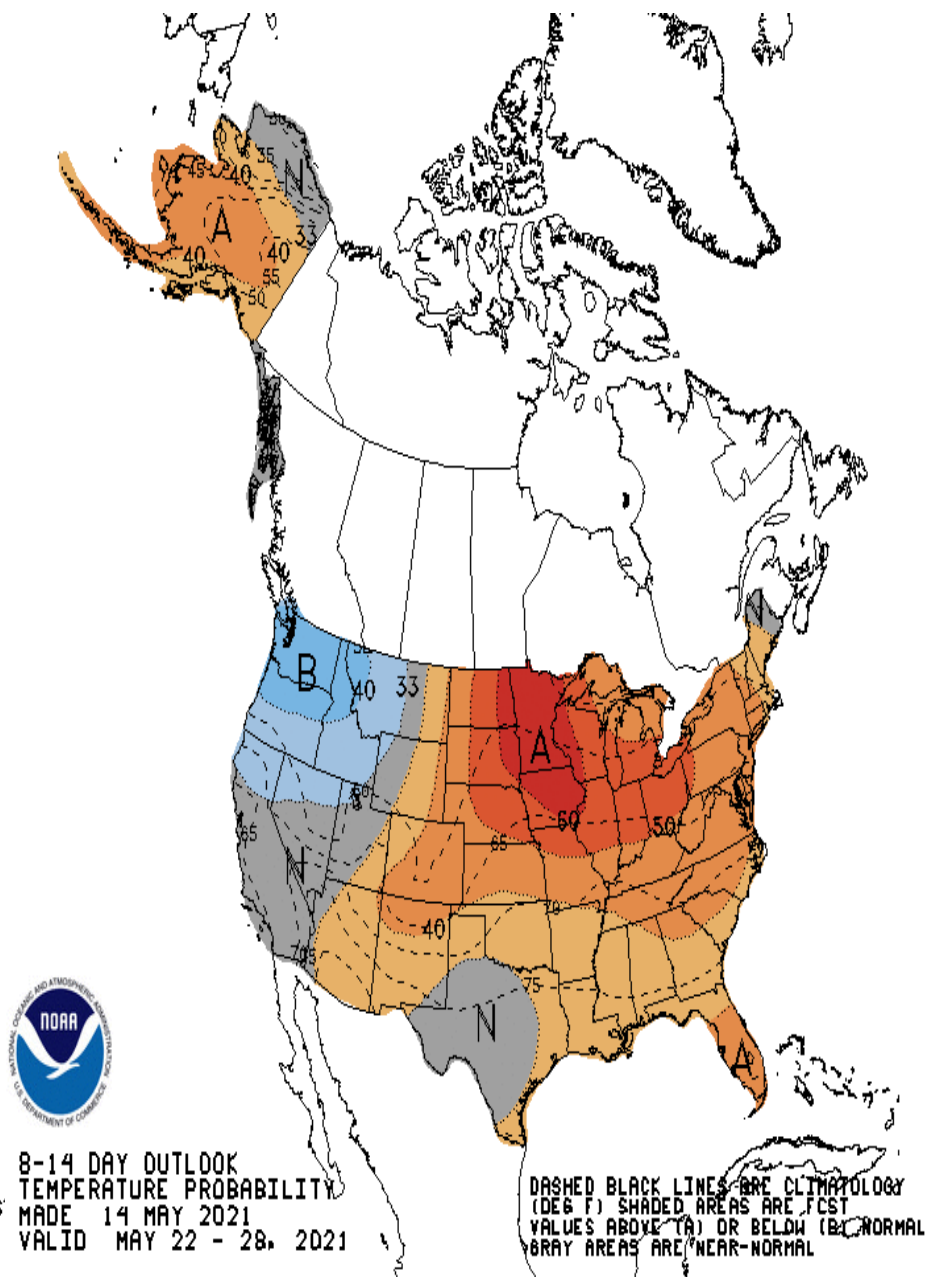
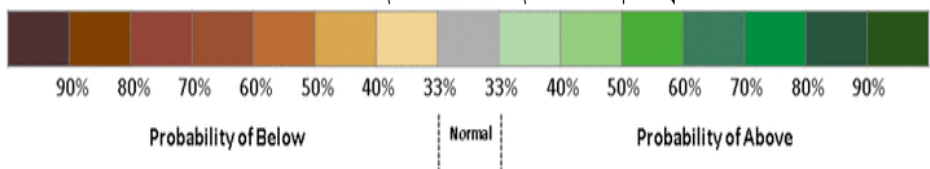
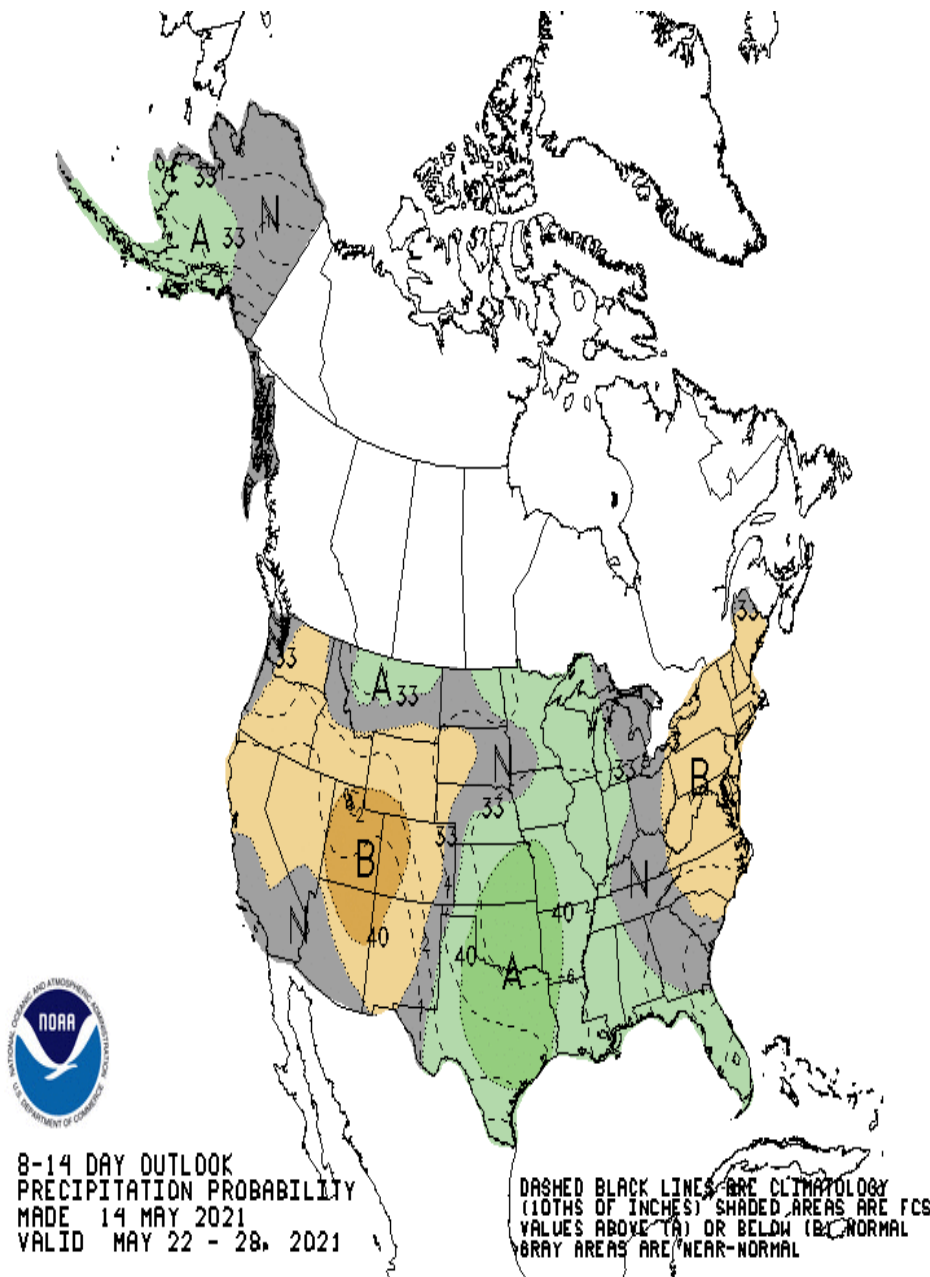
### Precipitation





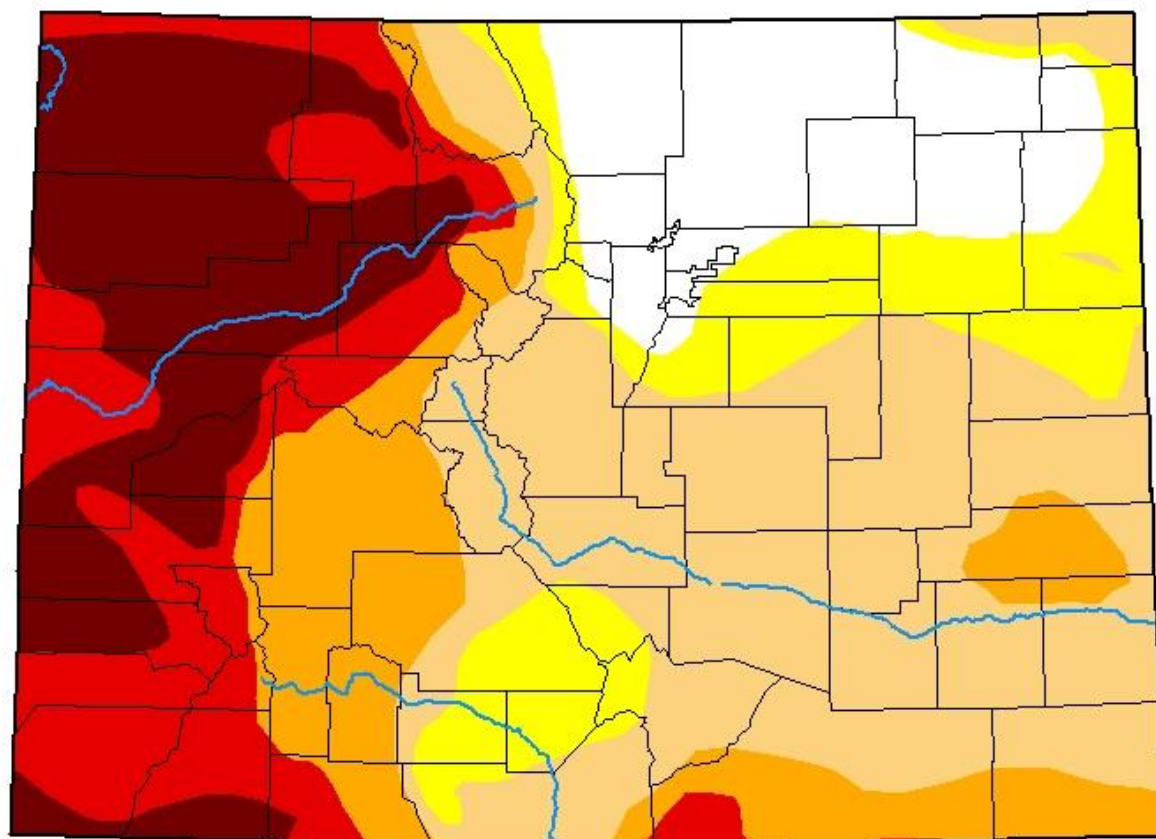
# Precipitation



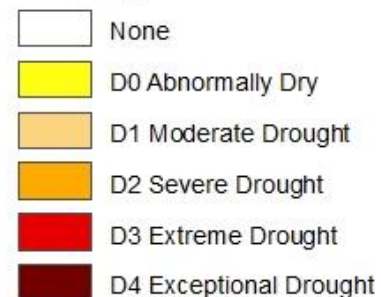


# U.S. Drought Monitor Colorado

**May 11, 2021**  
(Released Thursday, May. 13, 2021)  
Valid 8 a.m. EDT



## Intensity:



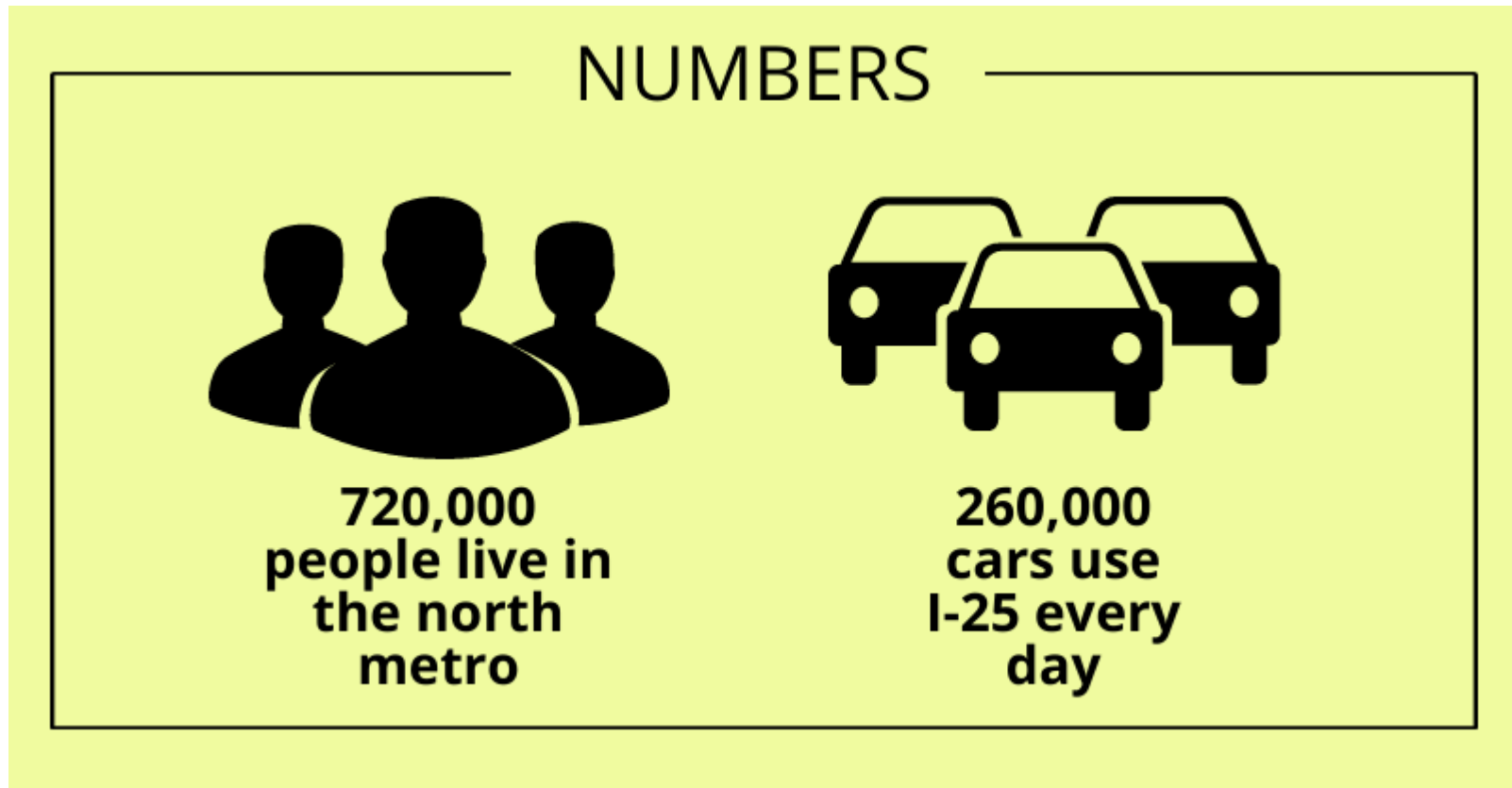
*The Drought Monitor focuses on broad-scale conditions. Local conditions may vary. For more information on the Drought Monitor, go to <https://droughtmonitor.unl.edu/About.aspx>*

## Author:

David Simeral  
Western Regional Climate Center



**droughtmonitor.unl.edu**



### Transportation and Transit

- Local Transportation Updates (attached)
- There are many efforts underway given the indication that the new Federal Administration is pro-transportation and looking to invest significantly in infrastructure including recent bills passed at the state level.

Some key areas:

- Momentum on support for the Front Range Passenger Rail Project (FRPR)
- Erie and other local stakeholders are making a push for progress on 287 Bus Rapid Transit (BRT)
- Erie will be working closely with local stakeholders to push forward a SH7 and I-25 Mobility Hub
- SH 119 improvements

### **General Information:**

- Public Works, Engineering, Planning and Communications and Outreach are working together to coordinate a number of projects throughout summer that will impact travel through Erie.
  - The closure at Highway 287 and Isabelle/Erie Parkway which will started on the east side (Erie) on April 19<sup>th</sup> is delayed due to issues with CDOT changing the asphalt spec after the bid and weather.
    - Engineering has worked closely with the Nine Mile development to delay the start of the closure of 111<sup>th</sup> Street until June 7<sup>th</sup> to reduce traffic issues for the developments in that area.
  - Full and partial lane closures on 119<sup>th</sup>, 111<sup>th</sup>, Countyline Road and Arapahoe
  - Impacts throughout Town as part of the Town's annual Paving Maintenance and Repair
  - Coordination with Town and other regional events
- **GREAT NEWS!** Our 4 million gallon water storage tank is repaired and filling and will be ready in time for summer irrigation season.