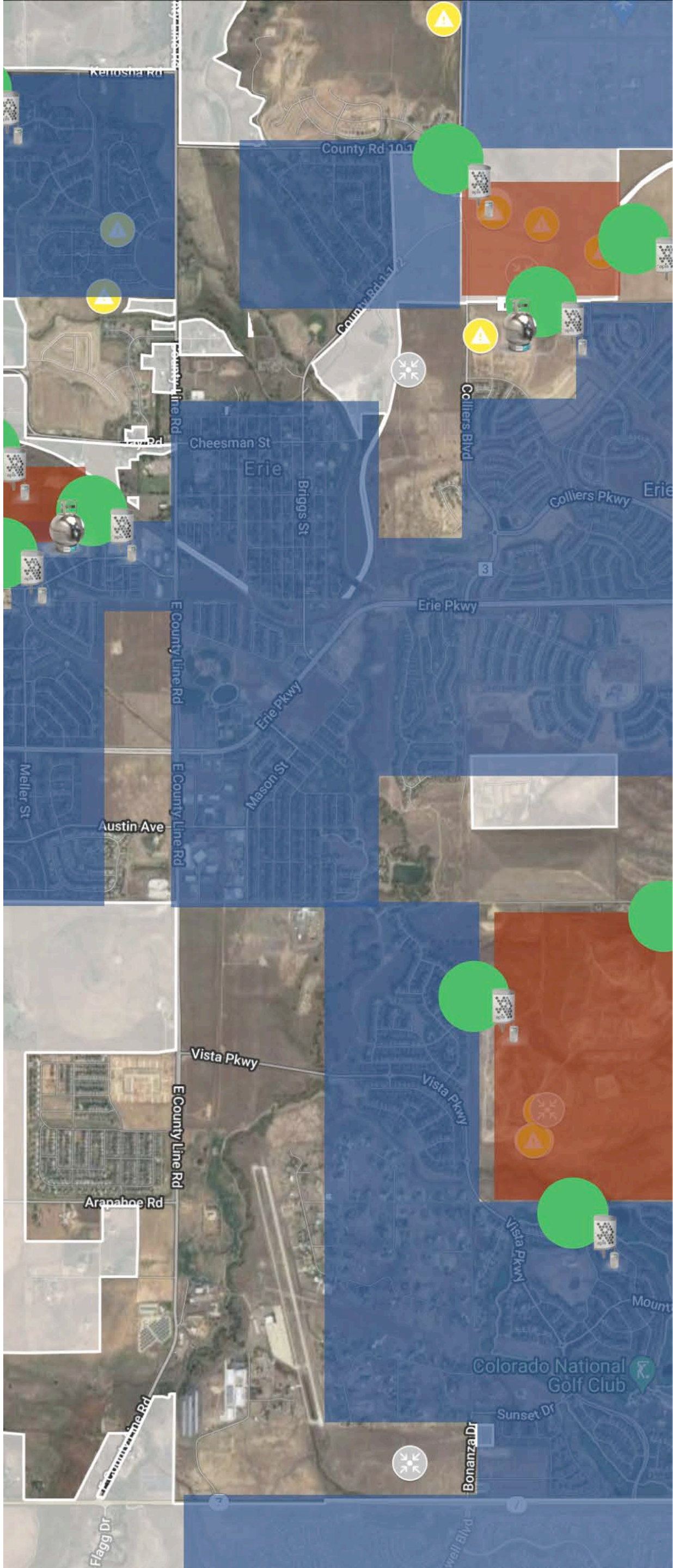


DEPLOYMENT OPTION A: COMMITMENT THROUGH 2023

Option A: EoY 2023 Commitment

May 2021 through December 2023										
Service	Service Details	Quantity		Monthly Subscription		Monthly Duration		Monthly Line Total	Commitment Discount	Discounted Line Total
Sensor System w/ Auto-Trigger Device	Managed system with TVOC, PM2.5, PM10, NO, NO2, wind speed and direction, temperature, pressure, humidity. Solar-powered, cellular connected. Includes one site deployment and one relocation. Data collection and storage included.	13	@	\$2,999	for	31	months	\$1,208,597	(\$181,290)	\$1,027,307
Auto-Triggered Sampling	Up-to number of auto-triggered samples. Monthly allocation to a sample quantity pool that is used across the sensor network over the contract term.	7	@	\$450	for	31	months	\$97,650	(\$14,648)	\$83,003
Base Service Level Availability	Base SLA includes: 80% sensor network uptime, 90% canister validity rate, 5-day triggered canister replacement, 5-day response to ad-hoc reports and questions.	13		included						\$0
Premium Service Level Availability	Premium SLA includes: 90% sensor network uptime, 90% canister validity rate, 7-day manual & triggered canister analysis reports, 48-hour triggered canister replacement, 2-day response to ad-hoc reports and questions, cold-spare systems on-hand.	0	@	\$232	for	0	months	\$0	\$0	\$0
Continuous Weekly Monitoring Site	4 weekly canister samples per site	4	@	\$1,845	for	31	months	\$228,780		\$228,780
Grab Canister Samples	Citizen/staff grab canister samples per month. Up-To:	2	@	\$450	for	31	months	\$27,900		\$27,900
Public Portal		1	@	\$1,116	for	31	months	\$34,596		\$34,596
Mobile Plume Tracker	Up-to 12 mobile plume tracker deployments over the contract duration.	3	@	\$20,000				\$60,000		\$60,000
Expert Services	Templated Quarterly Reporting, event reports, CSU F&A	1	@	\$5,000	for	31	months	\$155,000		\$155,000
Monitoring Plan Total								\$ 1,616,586		
Annual Pre-Payment Discount (5%)								\$ (80,829)		
Monitoring Plan Total								\$ 1,535,757		



DEPLOYMENT OPTION B: COMMITMENT THROUGH 2023

Option B: EoY 2023 Commitment

May 2021 through December 2023										
Service	Service Details	Quantity	Monthly Subscription		Monthly Duration		Monthly Line Total	Commitment Discount	Discounted Line Total	
Sensor System w/ Auto-Trigger Device	Managed system with TVOC, PM2.5, PM10, NO, NO2, wind speed and direction, temperature, pressure, humidity. Solar-powered, cellular connected. Includes one site deployment and one relocation. Data collection and storage included.	10	@	\$2,999	for	31	months	\$929,690	(\$139,454)	\$790,237
Auto-Triggered Sampling	Up-to number of auto-triggered samples. Monthly allocation to a sample quantity pool that is used across the sensor network over the contract term.	5	@	\$450	for	31	months	\$69,750	(\$10,463)	\$59,288
Base Service Level Availability	Base SLA includes: 80% sensor network uptime, 90% canister validity rate, 5-day triggered canister replacement, 5-day response to ad-hoc reports and questions.	10	included							\$0
Premium Service Level Availability	Premium SLA includes: 90% sensor network uptime, 90% canister validity rate, 7-day manual & triggered canister analysis reports, 48-hour triggered canister replacement, 2-day response to ad-hoc reports and questions, cold-spare systems on-hand.	0	@	\$232	for	0	months	\$0	\$0	\$0
Continuous Weekly Monitoring Site	4 weekly canister samples per site	4	@	\$1,845	for	31	months	\$228,780		\$228,780
Grab Canister Samples	Citizen/staff grab canister samples per month. Up-To:	2	@	\$450	for	31	months	\$27,900		\$27,900
Public Portal		1	@	\$1,116	for	31	months	\$34,596		\$34,596
Mobile Plume Tracker	Up-to 12 mobile plume tracker deployments over the contract duration.	3	@	\$20,000				\$60,000		\$60,000
Expert Services	Templated Quarterly Reporting, event reports, CSU F&A	1	@	\$5,000	for	31	months	\$155,000		\$155,000
Monitoring Plan Total								\$	1,355,800	
Annual Pre-Payment Discount (5%)								\$	(67,790)	
Monitoring Plan Total								\$	1,288,010	

