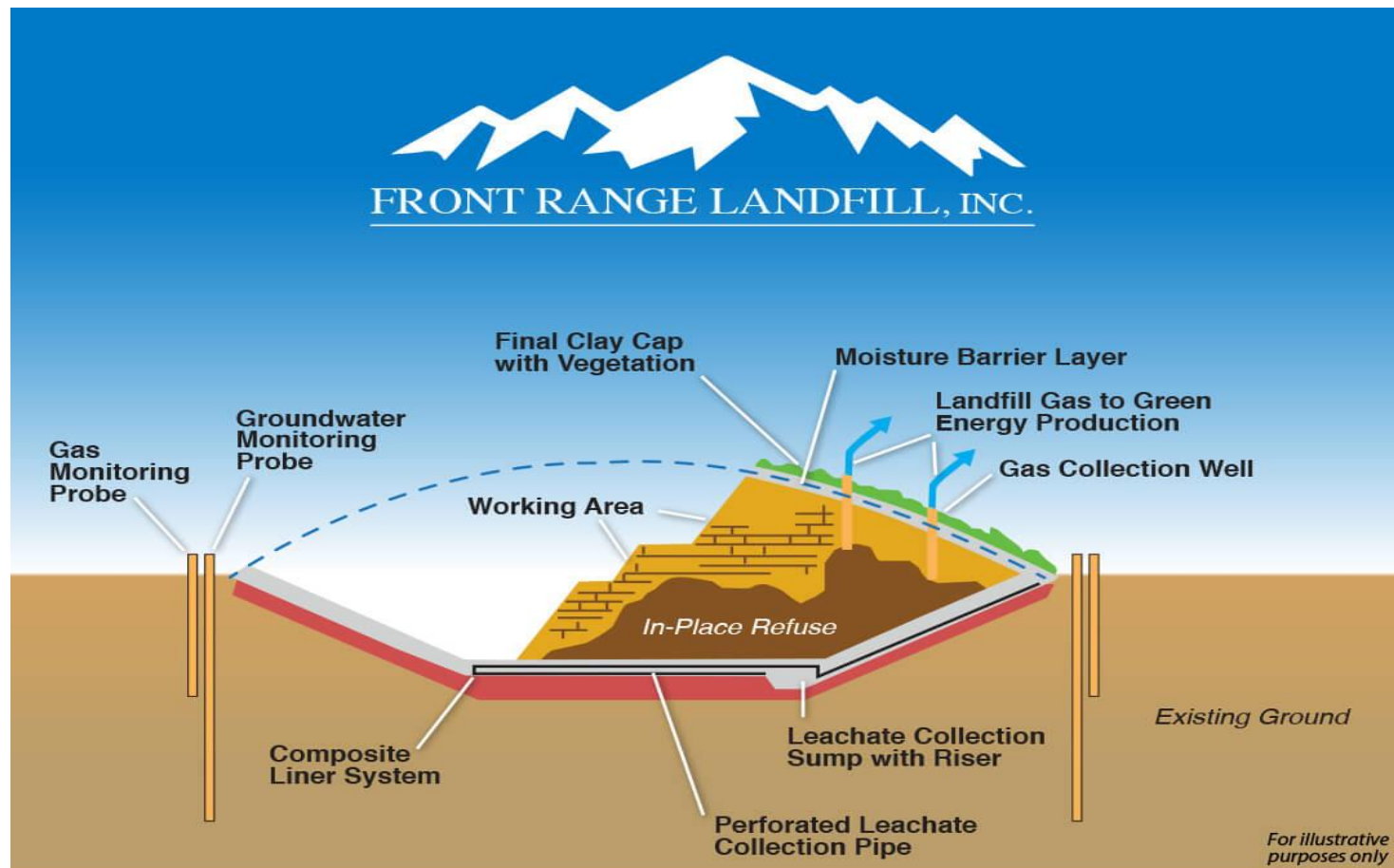


July 2020 Public Works Report

Front Range and Denver Regional Landfill Updates

Current status of the landfill operations is that the Denver Regional Landfill (**DRL**), west of County Road 5 and south of County Road 6, is being filled until January 2021. After that capping (cover, seeding, etc) operations will continue for another 6 months. This will result in full closure of this landfill and begin a 30-year monitoring period.

Front Range Landfill (**FRL**), east of County Road 5 and south of County Road 6 will continue to fill the southern-end moving westward until fall. Right now they are moving a road on the south face to allow them to continue this operation. This will result in seeding that southern face in late fall, which is an ideal time to seed. The goal is having the southern facing edge of the FRL being completed this fall, and trash operations moving north to the permitted elevation and out of visibility from the south from that point forward.



Capital Improvement Projects

Erie Parkway Bridge

Punch-list work continues. We have de-scoped ongoing landscaping work from the contractor for this project. This is a general change the Town is seeking in having more control over landscaping after major capital projects to ensure they are successful and that aesthetics are maintained during the contractor's 2-year warranty period. We have proposals for restoration of the native areas, and are determining if a bid is needed to begin this effort. Due to the excellent pricing we received on this project we have the funds to do this work.

Lynn R Morgan Water Treatment Facility (WTF) Expansion

Construction of the WTF expansion continues ahead of schedule and well under budget. We received the roughly \$767,000 DOLA grant for the hydro turbine and are gearing up to do that additional work. Garney Construction will begin the construction of the turbine building now, we will place the order for the fabrication of the turbine which is a 6-month lead item.

Sustainability and Water Conservation

Lots of effort going on in this one-man department this month!

Energy

- Town building energy use evaluation close to bid.
- Met with Tanko regarding Streetlight purchase, will present next steps August 11th.

Green Business & HOA Certification Program

- Incorporating a Green HOA Certification in to our existing Green Business program to become the first in the state to offer an organized approach through the GreenBizTracker software provided by CDPHE.

EV's

- New transformer being designed and installed by United Power pending approval at the ECC to provide the electricity demand for the 8 EV parking spots in the SE corner of the parking lot.
- The Town was accepted in to the Xcel Energy EV Infrastructure Assistance Program for 3 new EV chargers.
- Sustainability Advisory Board is working on a Charging Station Rate Study to recommend to the Board as to how much to charge users for use.

Waste

- Recycling Center has had over 1,200 surveyed users since reopening May 27 averaging over 25/day.
- We were awarded a Recycling Rebate from CDPHE for ~\$6,000 for 2019.
- Spring Cleanup rescheduled for July 25th at the Front Range Landfill and we are partnering with PCs for People to collect, sanitize, and refurbish any computers or tablets to be donated to local schools. Our IT Department will also be using this service.

Water Efficiency

- There is extremely high demand for the Slow the Flow Irrigation Assessments this year as we have already fulfilled our contracted amount of allotted assessments with 34 additional requests and we are only halfway through the watering season.

Equity

- We are working on translating all our sustainability offerings in to Spanish and redoing collateral and Erie.Earth in Spanish. We have also changed the language on the survey administered at the Recycling Center to be more approachable.
- Steering committee for Erie.Earth is considering a Phase II which will include a community mapping component to begin figuring out who the town's advocates and champions are for environmental sustainability, diversity, and inclusion in all our offerings. Financial partners are still needed to move forward as the intention is to have Erie.Earth be a "for us, by us" community driven movement.

Low Water Using and Pollinator Policy Efforts

- We have been working with a land reclamation consultant (DuraRoot) who is helping us create site-specific restoration plans for our plugged and abandoned oil and gas sites. The goal is to get away from the current "one size fits all" approach to land reclamation. Our goal is to turn former oil and gas sites into pollinator areas or solar gardens (one energy source transforms into another story that we have been mentioning).
- Also, we will begin requiring developers to submit, as part of their application, an independent open space parcel assessment and a site-specific Reclamation Plan. Much like the item above, we are trying to get away from installing large temporary irrigation systems that are only used for a few years. Current standards and specs require a developer to scrape existing vegetation from the future open space areas and start from scratch. In many cases this is not an effective method and leads to weed issues and poor establishment.
- We incorporated these policy guidelines into our Median Policy which we will be revising and bringing back to the Board in the next couple of months. We are solicited input from each Advisory Board (through Phil Brink) throughout the policy process.



Lynn R. Morgan Water Treatment Facility (WTF)

Annual Daily Average Flow:

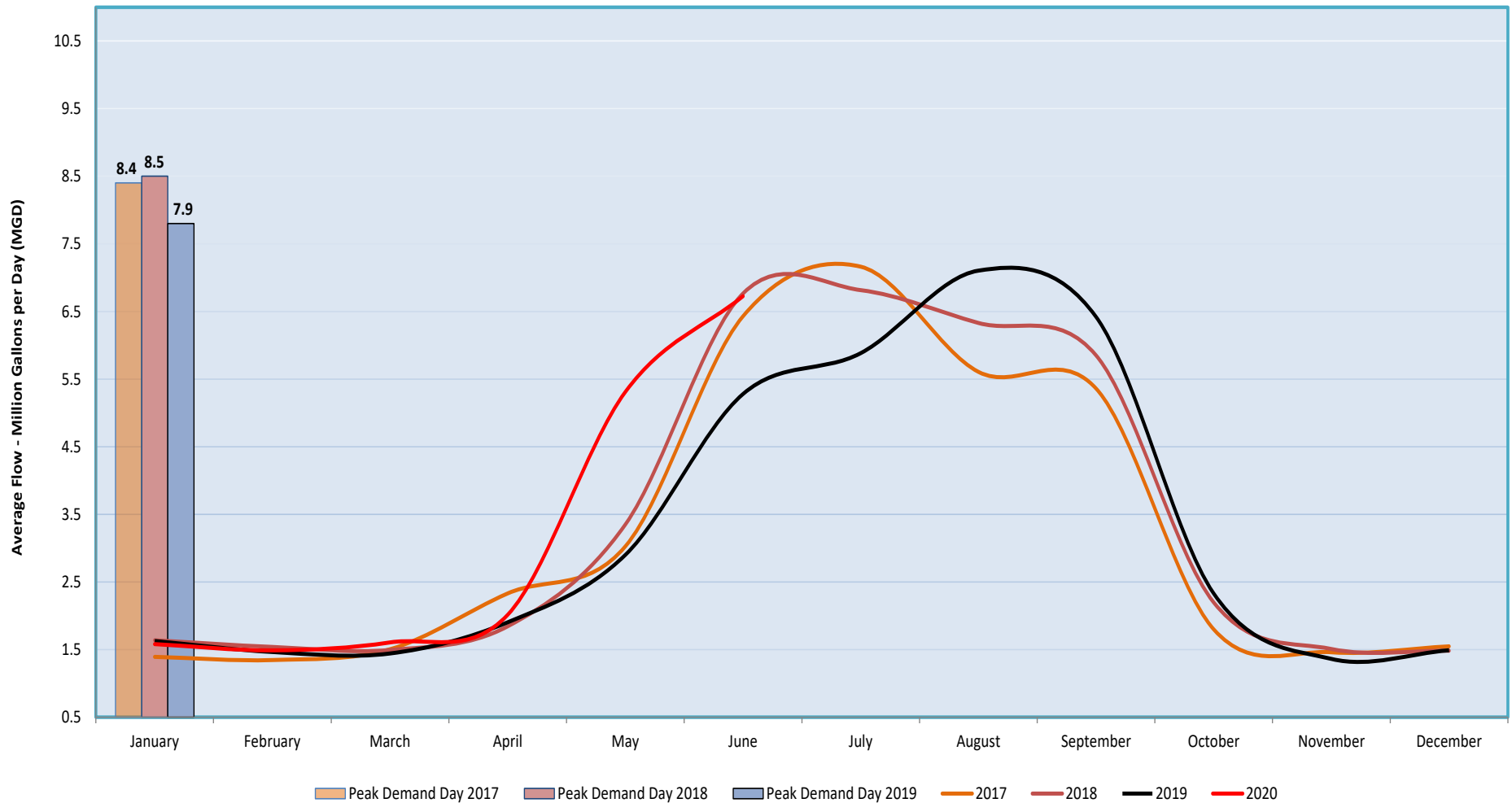
2017 - 3.3 (Million Gallons) MG

2018 – 3.4 MG

2019 – 3.3 MG

July 2017 maintains the record for the highest monthly average flows at 7.16 MG, while February 2017 had the lowest flows at 1.35 MG closely followed by November 2019 at 1.36 MG. Summer demands greatly affect the annual average due to outdoor irrigation. The daily peak demand (customer meter totals) of 8.45 MGD was in July of 2018. Water demands returned to more normal summer levels this month.

Average Monthly Production



Annual Daily Gallons Per Capita per Day (GPCD):

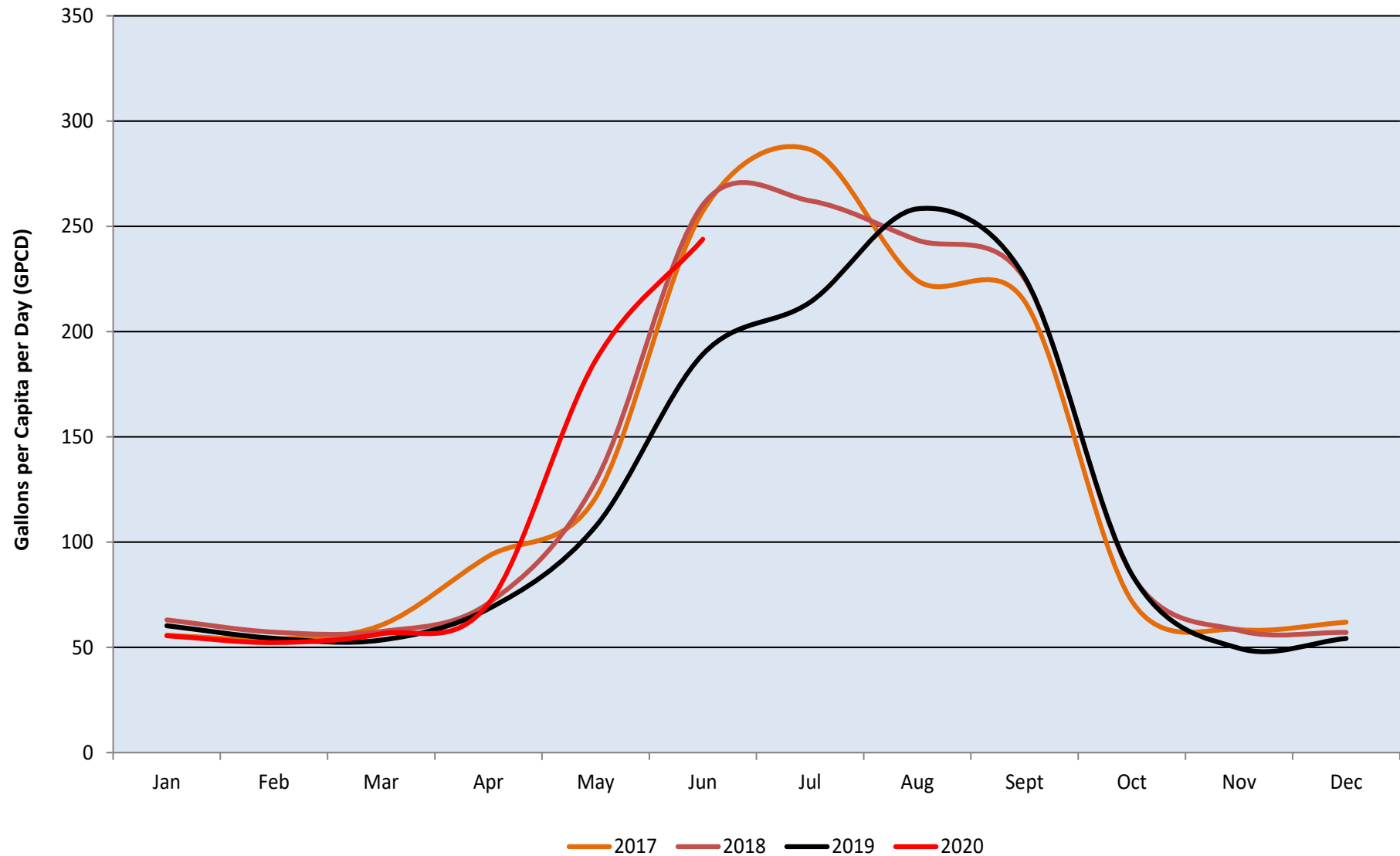
2017 - 130 GPCD

2018 – 131 GPCD

2019 – 118 GPCD

July 2017 had the highest average daily usage at 287 gallons GPCD. February 2020 had the lowest usage at 52 GPCD. Reducing summer irrigation and increasing reuse water availability will reduce reliance on treated water supplies in the future.

Average Daily Usage Per Capita



North Water Reclamation Facility

Annual Daily Average Flow:

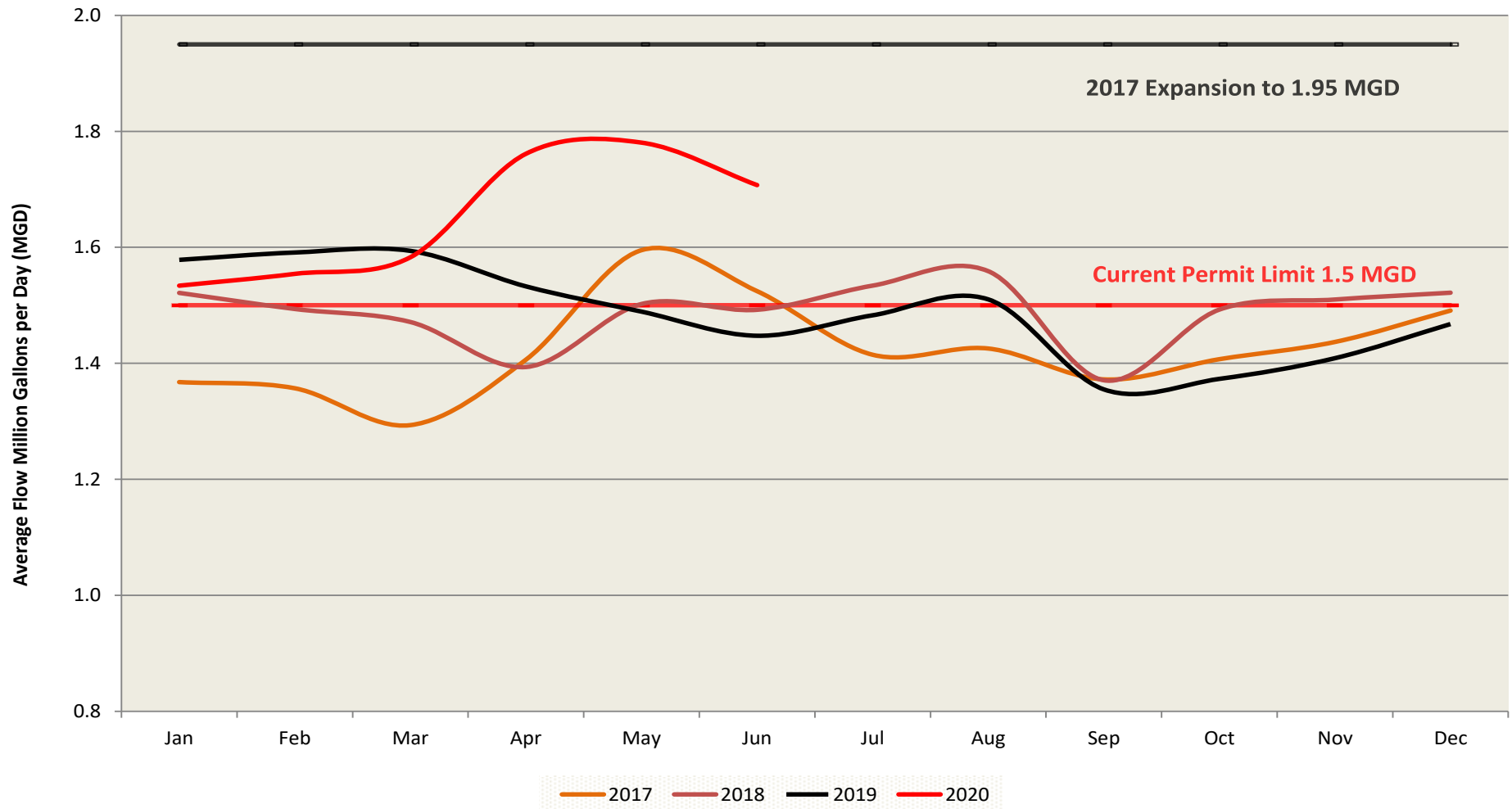
2017 - 1.42 MG

2018 – 1.49 MG

2019 - 1.49 MG

March 2017 had the lowest average flow of 1.29 million gallons per day (MGD). May 2020 set a high average monthly flow of 1.78 MGD. This stark increase is likely due to the Stay at Home and Safer at Home orders which have driven residents who work out of town to stay at home. Colorado Department of Public Health and Environment (CDPHE) is indicating that they will not be renewing our permit until as late as 2023 or 2024. We plan to challenge this pattern with the support of multiple local and regional wastewater providers in the near future.

Average Monthly Flows



Annual Daily Gallons Per Capita per Day (GPCD):

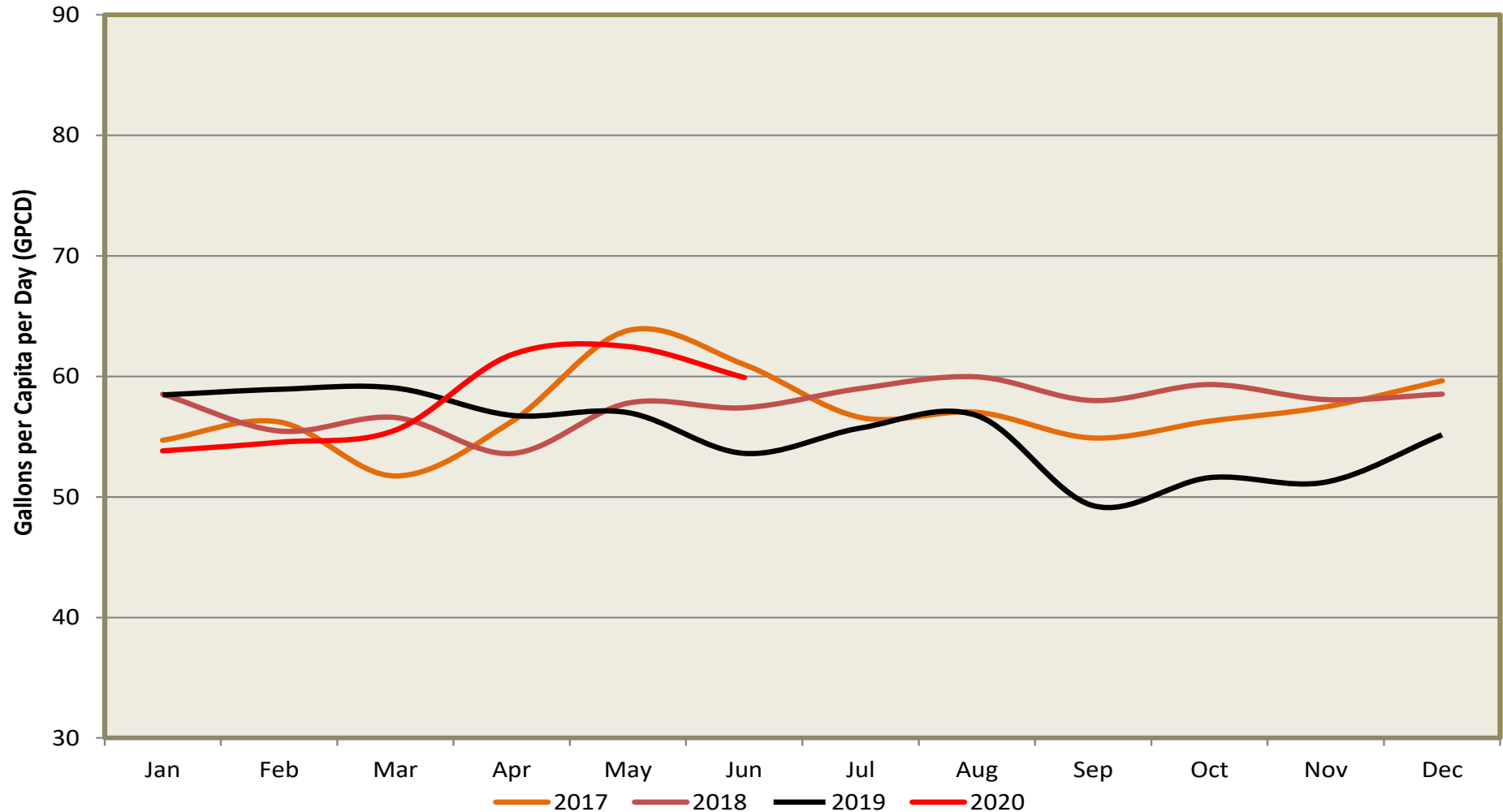
2017 - 57 GPCD

2018 - 58 GPCD

2019 - 55 GPCD

This graph depicts customer indoor water usage. May 2017 had the highest usage at 64 GPCD, primarily due to snow melt seeping into manholes after a particularly wet snow and subsequent warm weather which we believe are now primarily resolved. September 2019 had the lowest usage at 49 GPCD. Fall, with relatively little precipitation and dropping groundwater levels, is a good indicator of true daily flows.

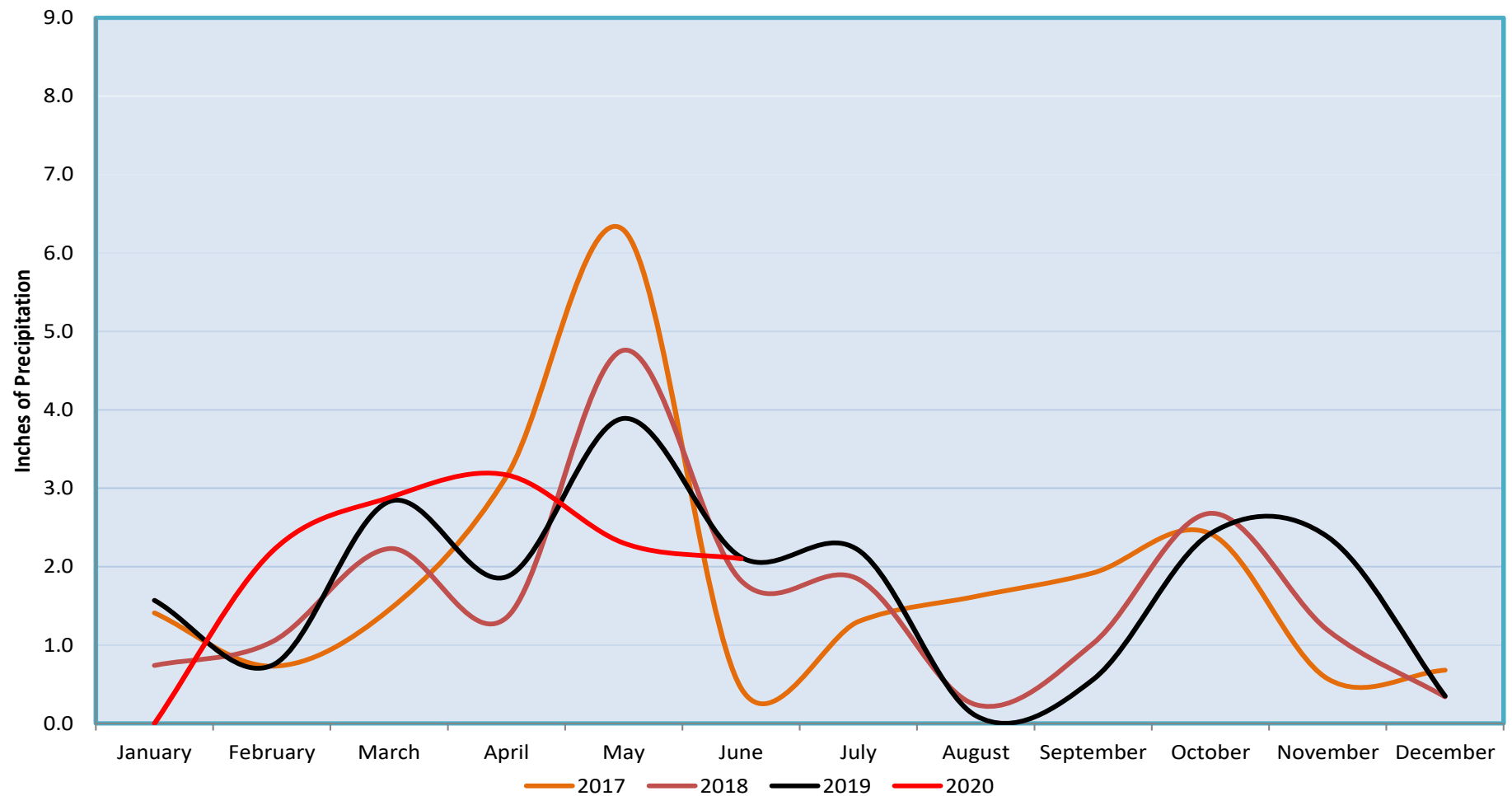
Average Daily Usage Per Capita



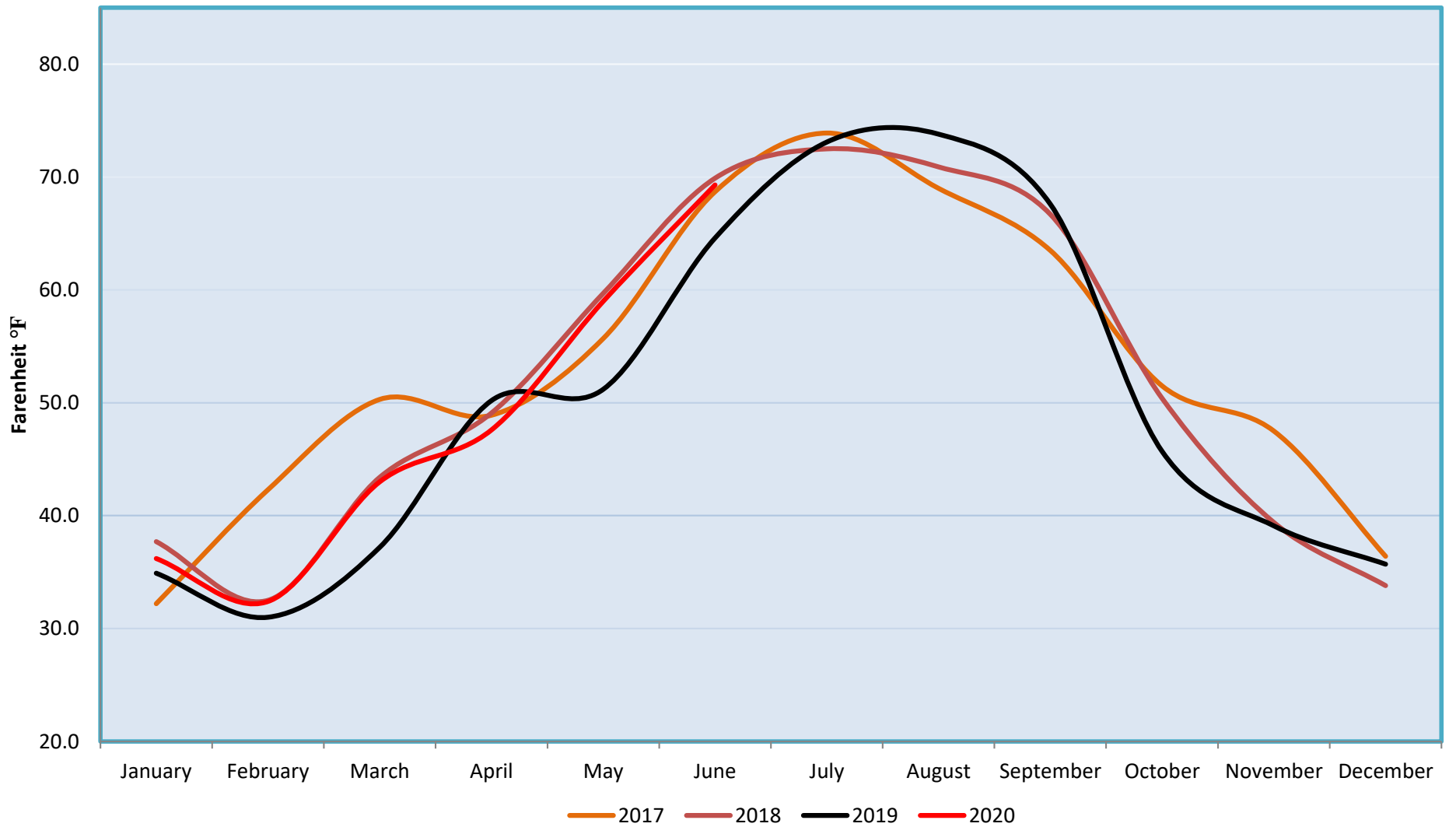
Monthly Data for Boulder – National Oceanic and Atmospheric Administration (NOAA) & Natural Resource Conservation Service (NRCS)

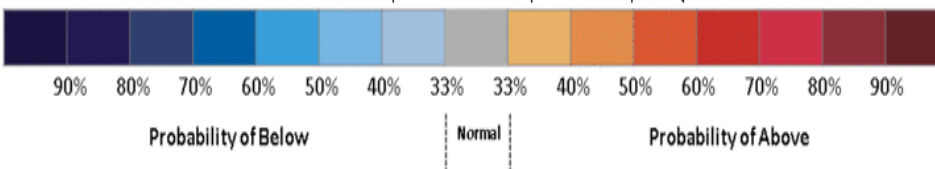
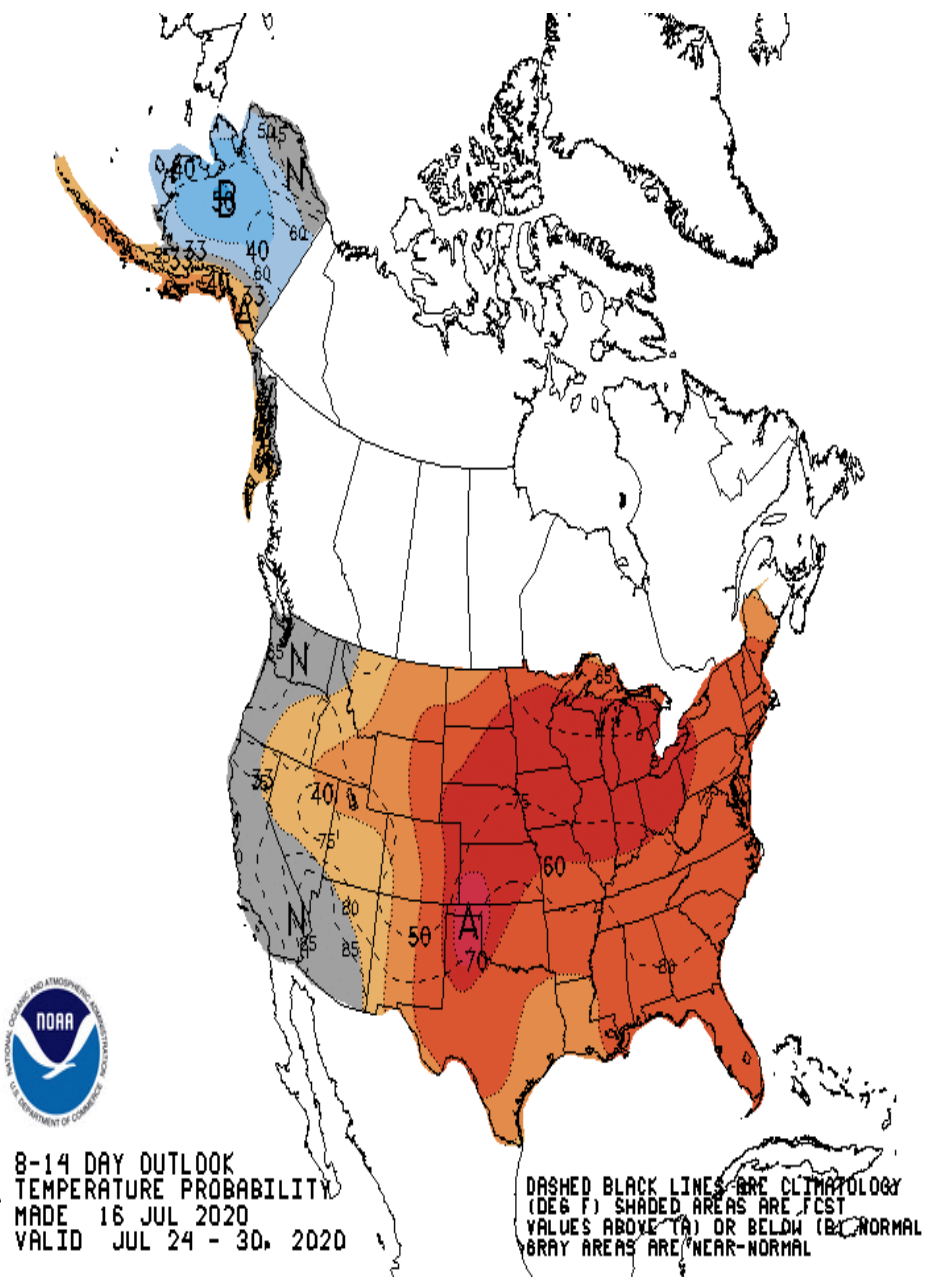
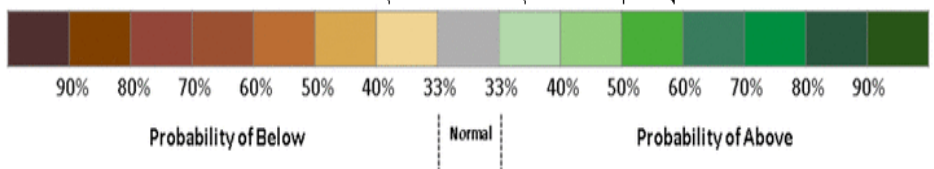
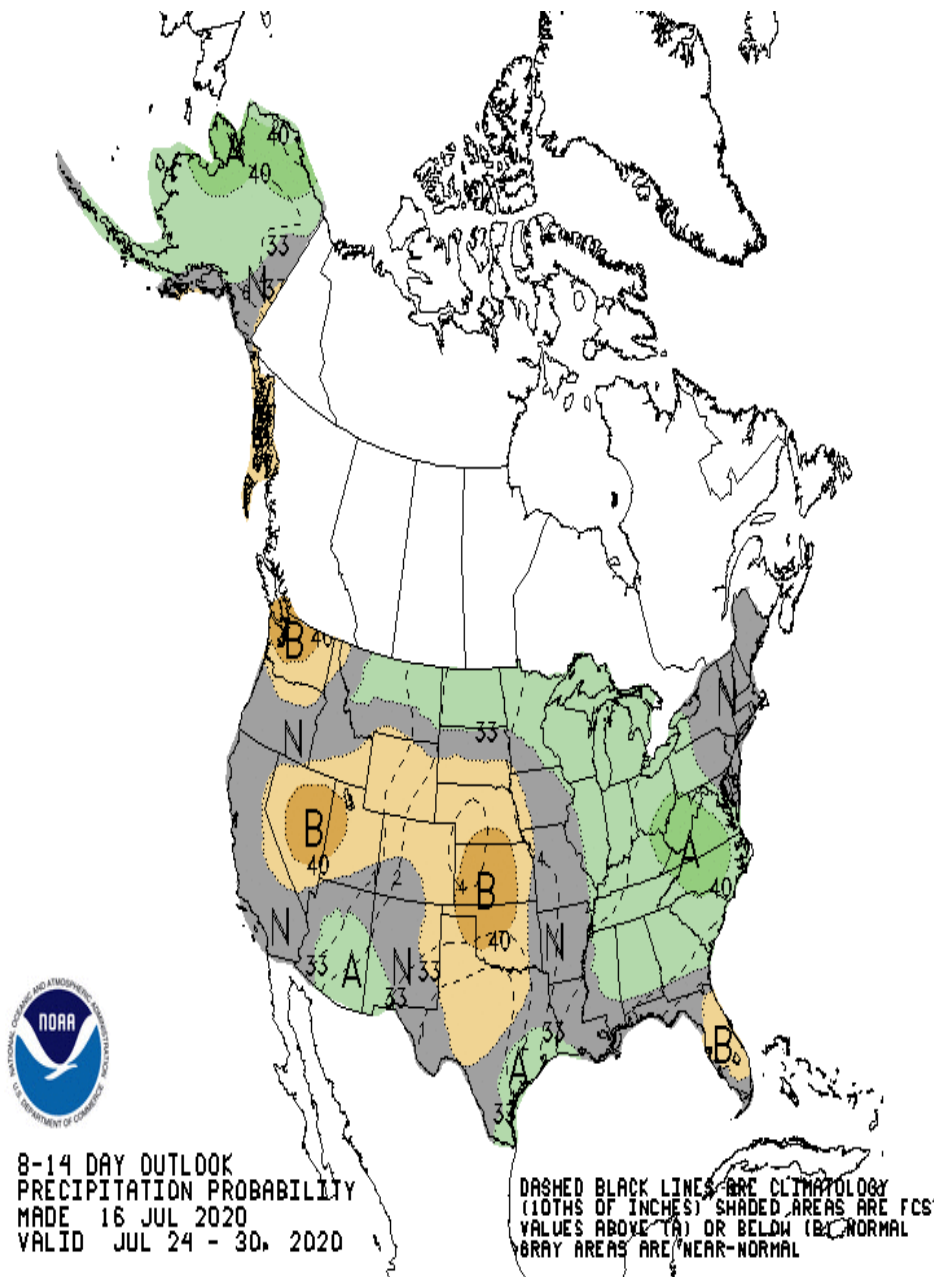
NOAA is predicting a 33% chance of below normal precipitation and 60% chance of above normal temperatures through late July, continuing the pattern from last month. This year's graph looks unusual due to a complete lack of precipitation early in the year followed by less than normal spring precipitation.. Looking at the drought monitor, it appears Erie is one of the few areas in the state not seeing strong drought movement at this time. Overall snowpack for the year was strong, and reservoirs are full

Precipitation



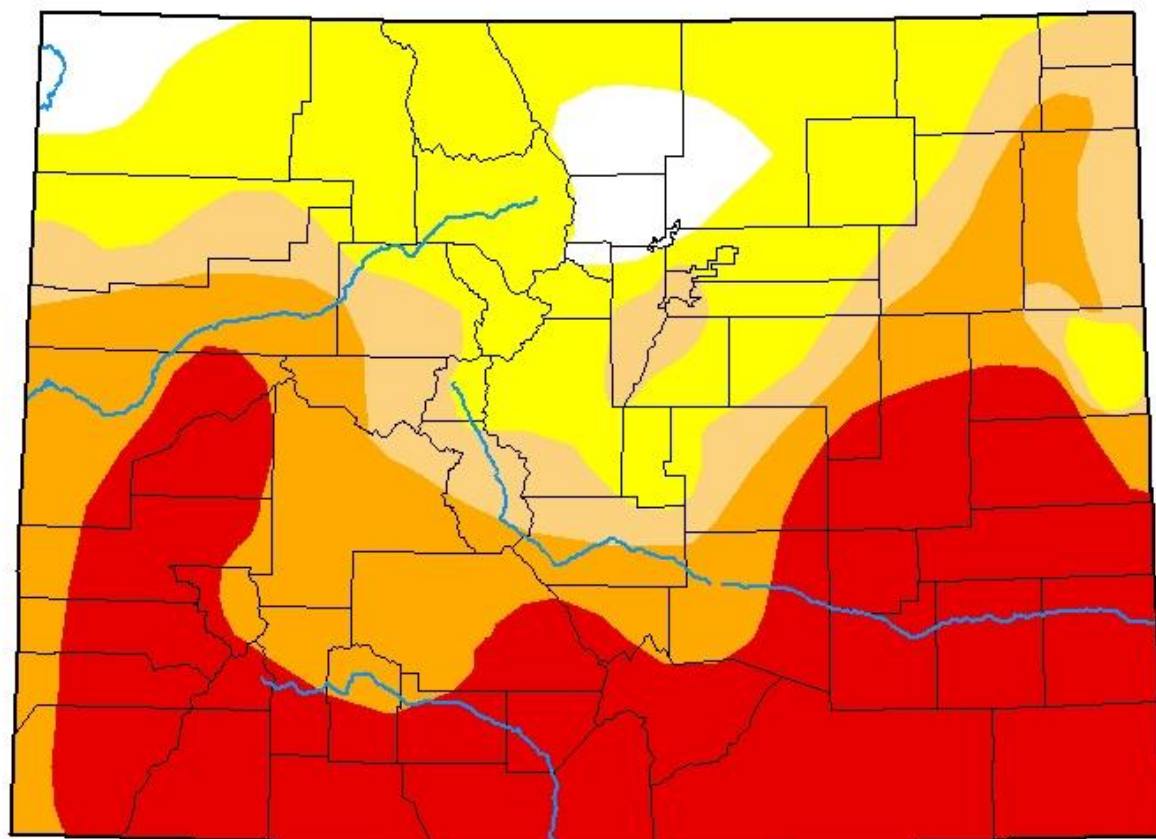
Mean Temperature










U.S. Drought Monitor Colorado

July 14, 2020
(Released Thursday, Jul. 16, 2020)
Valid 8 a.m. EDT



Intensity:

-  None
-  D0 Abnormally Dry
-  D1 Moderate Drought
-  D2 Severe Drought
-  D3 Extreme Drought
-  D4 Exceptional Drought

The Drought Monitor focuses on broad-scale conditions. Local conditions may vary. For more information on the Drought Monitor, go to <https://droughtmonitor.unl.edu/About.aspx>

Author:

David Miskus
NOAA/NWS/NCEP/CPC



droughtmonitor.unl.edu

Transportation Updates

Staff is evaluating the potential for a number of recently released grants from DRCOG and CDOT. We submitted an application for over \$800,000 in funding for our upcoming traffic signal communication project, and are looking at several others. SH7 Coalition will meet the week of July 20 and is preparing to begin the State Highway 7 Preliminary Engineering Evaluation project. Interim Town Engineer, David Pasic, and I are meeting monthly with Trustee Gippe to coordinate on Erie Transportation needs and funding efforts. This collaboration is already proving to be very fruitful.

Full steam ahead!

