

Lynn R. Morgan Water Treatment Facility

Annual Daily Average Flow:

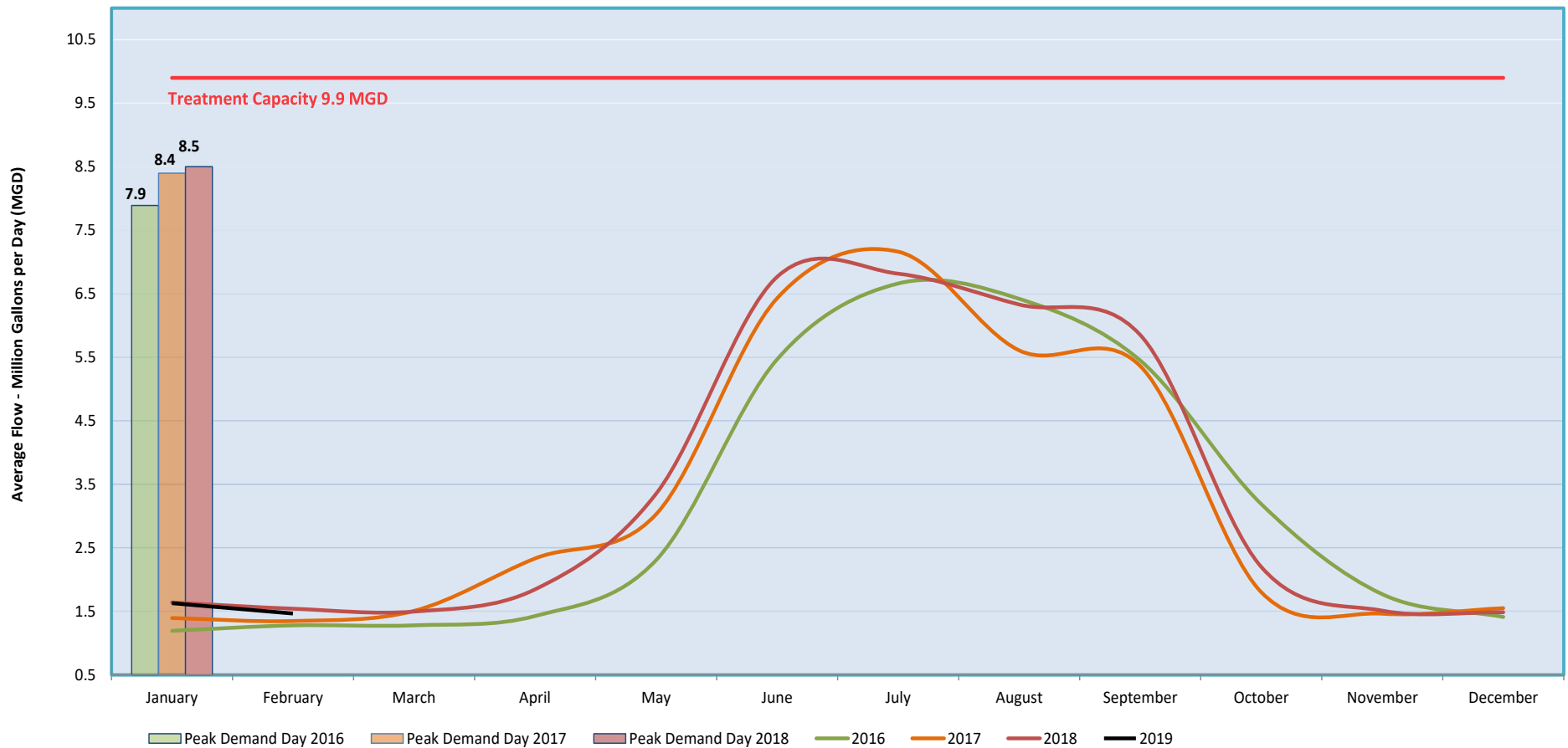
2016 - 3.3 (Million Gallons) MG

2017 – 3.4 MG

2018 – 3.4 MG

July 2017 maintains the record for the highest monthly average flows at 7.16 MG, while January 2016 had the lowest flows at 1.19 MG. Summer demands greatly affect the annual average due to outdoor irrigation. The daily peak demand (customer meter totals) of 8.45 MGD was in July of 2018. We are at 90% design for the current water plant expansion with engineer Burns and McDonnell and Garney Construction as Construction Manager at Risk (CMAR) for this project. Garney is placing an order for the filtration membranes for this project, which will buy us a 6 month acceleration. Once the design is complete Garney will provide a Guaranteed Maximum Price (GMP) and the Town will have the option to award the project to Garney or bid it out.

Average Monthly Production



Annual Daily Gallons Per Capita per Day (GPCD):

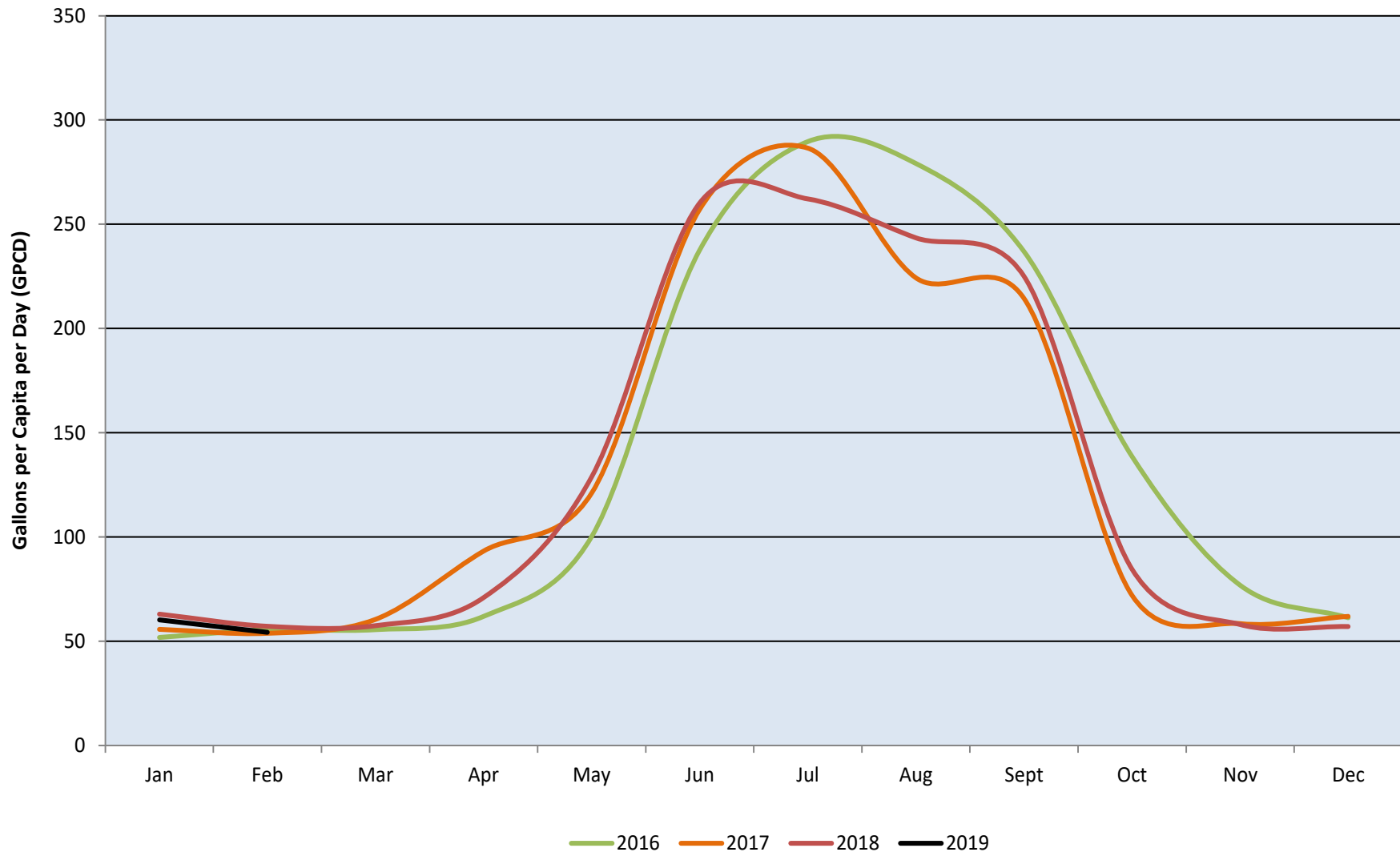
2016 - 131 GPCD

2017 – 130 GPCD

2018 – 131 GPCD

July 2016 had the highest average daily usage at 290 gallons GPCD. January 2016 had the lowest usage at 52 GPCD. Reducing summer irrigation and increasing reuse water availability will reduce reliance on treated water supplies in the future. Worth noting, Erie's smart irrigation controller rebate program and low flow toilet program through Resource Central, Flush for the Future, will continue in 2019.

Average Daily Usage Per Capita



North Water Reclamation Facility

Annual Daily Average Flow:

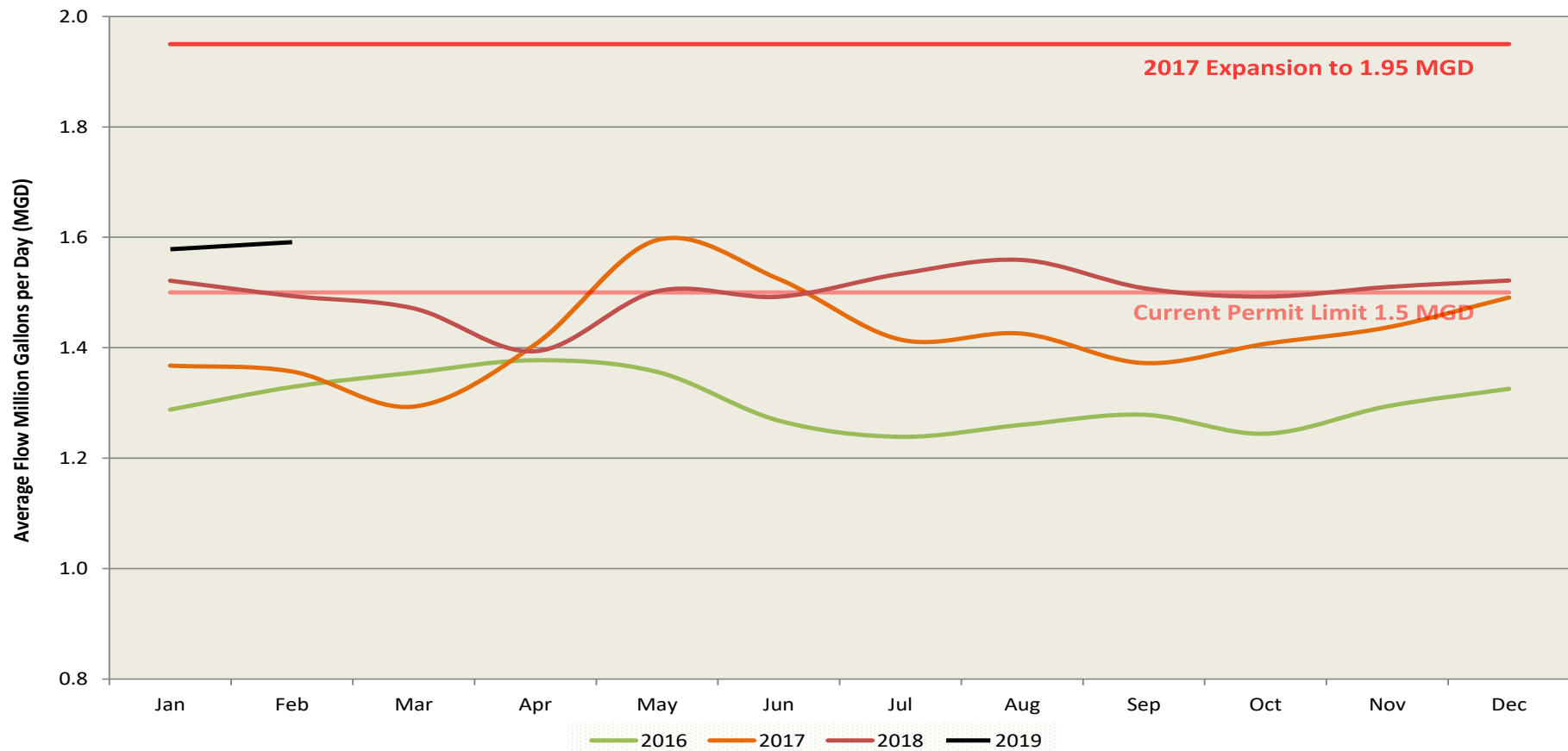
2016 - 1.30 MG

2017 - 1.42 MG

2018 - 1.50 MG

October 2016 had the lowest average flow of 1.24 million gallons per day (MGD). May 2017 set a high average monthly flow of 1.60 MGD, triggered by snowmelt and subsequent inflow into the collection system, likely through low lying manhole lids. Inflows were up slightly in January and February for the same reason. Staff worked with consultant Leonard Rice Engineers (LRE) and submitted a request for modifications to the facility permit from the Colorado Department of Public Health and Environment (CDPHE) in April 2018. The end result of this effort will be a permit at 1.95 MGD and more appropriate discharge limits than in the current or proposed permit. CDPHE has indicated that they will not process this request until after 2019; we are reaching out to CDPHE and asking they revisit this position. HDR Inc. will present the facility master planning and preliminary design for the next NWRF expansion to roughly 3.0 MGD later this month. We anticipate construction in late 2019 or early 2020.

Average Monthly Flows



Annual Daily Gallons Per Capita per Day (GPCD):

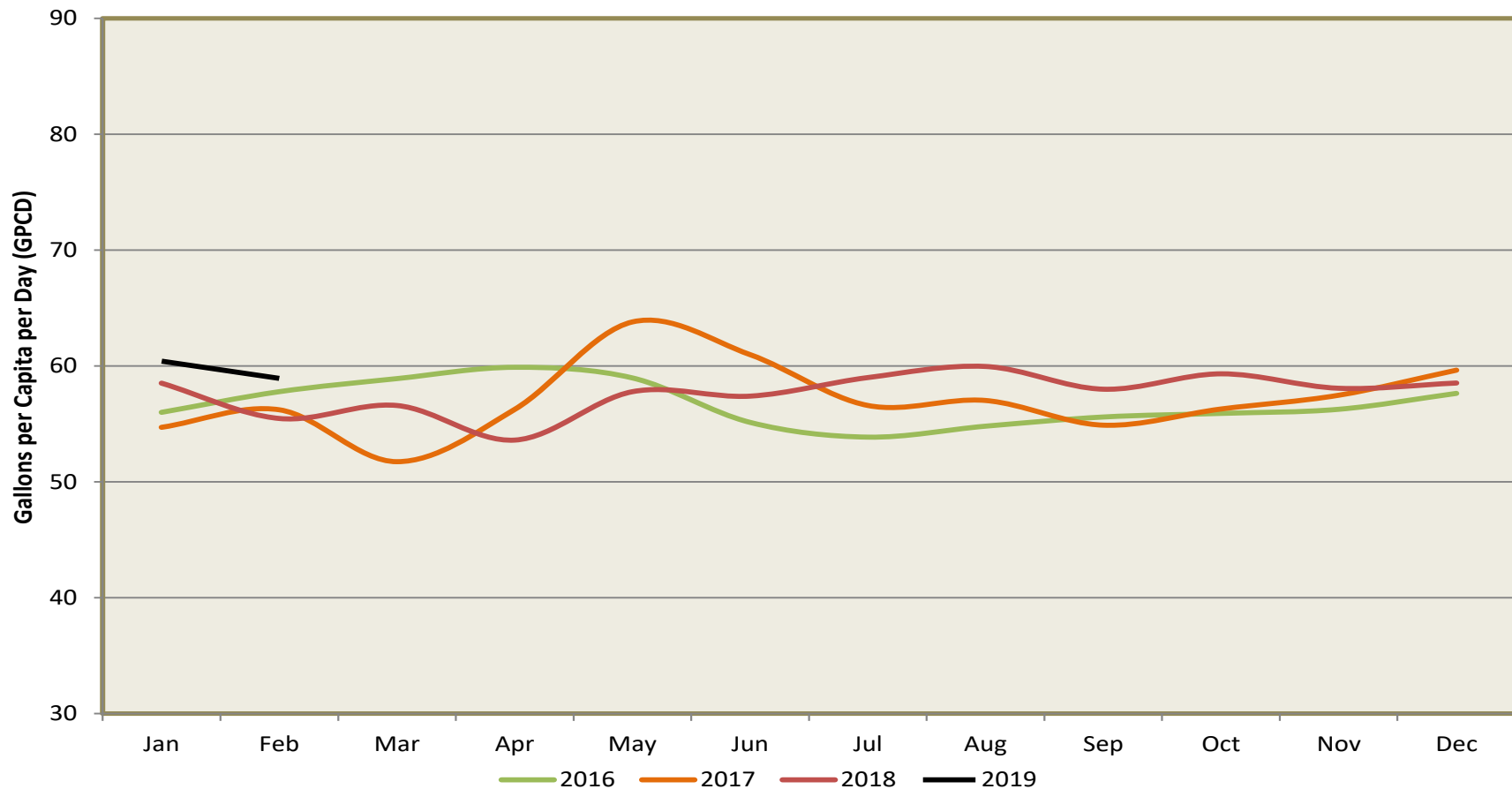
2016 - 57 GPCD

2017 - 57 GPCD

2018 - 58 GPCD

This graph depicts customer indoor water usage. May 2017 had the highest usage at 64 GPCD, primarily due to snow melt seeping into manholes after a particularly wet snow and subsequent warm weather. March 2017 had the lowest usage at 52 GPCD. Overall flows into the wastewater treatment plant are trending upward over this period, however per capita demands remain relatively flat on an annual basis. Fall, with relatively little precipitation and dropping groundwater levels, is a good indicator of true daily usage. Flows to the NWRP trended up in January and February presumably due to snow events and some inflow.

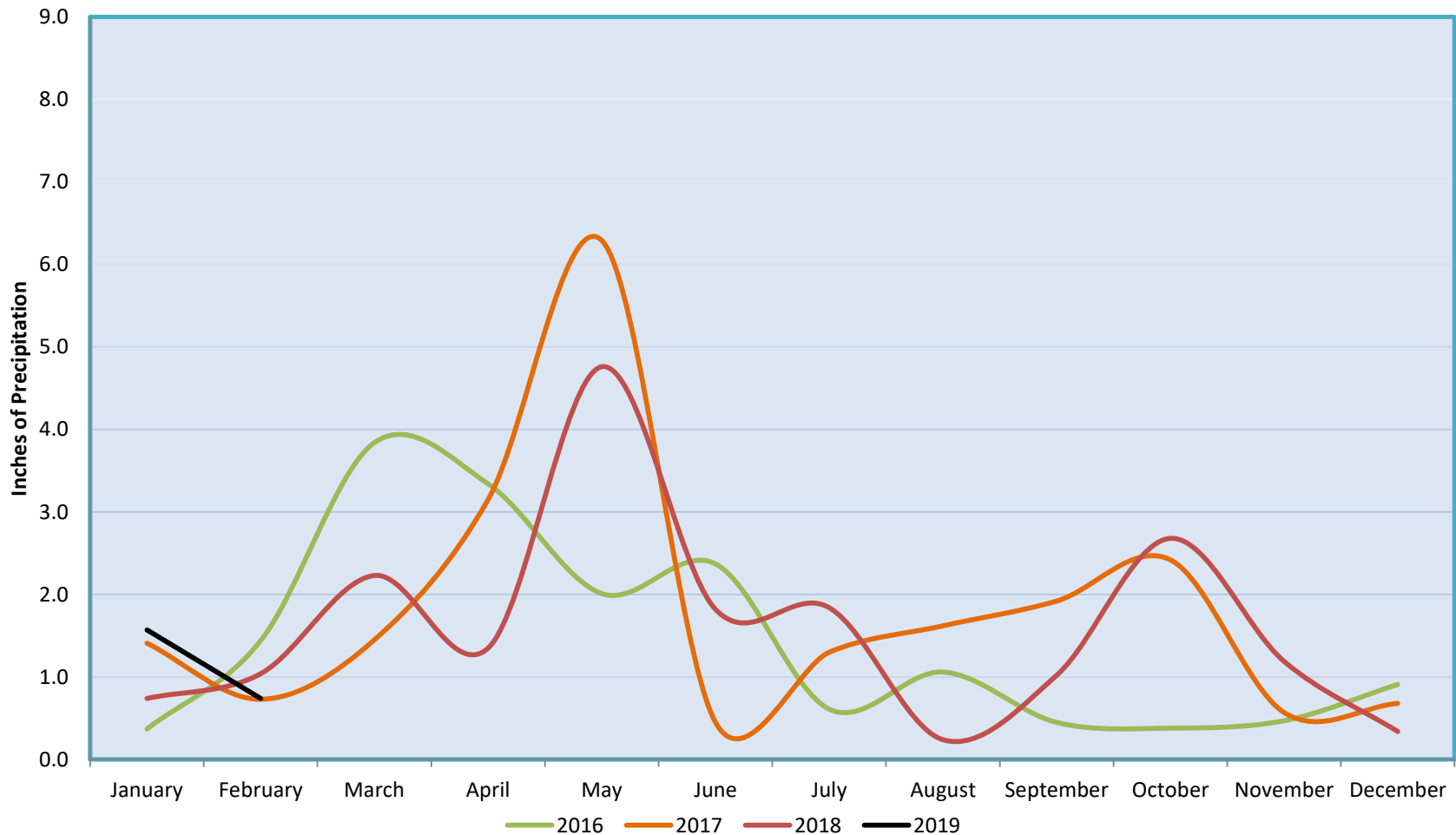
Average Daily Usage Per Capita



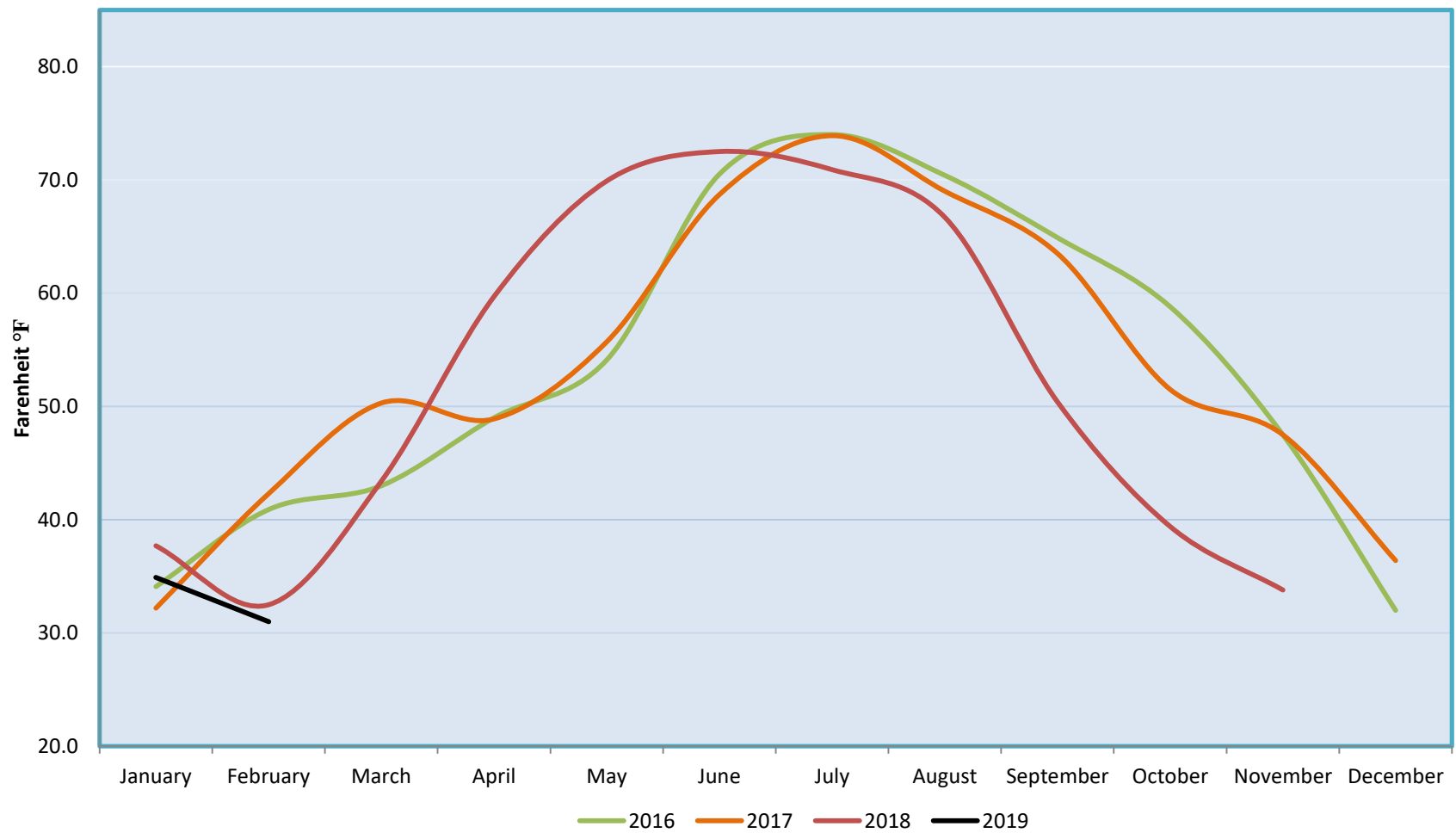
Monthly Data for Boulder – National Oceanic and Atmospheric Administration (NOAA) & Natural Resource Conservation Service (NRCS)

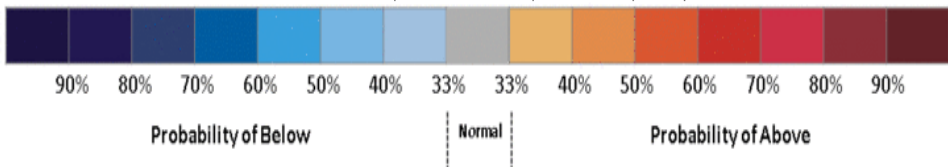
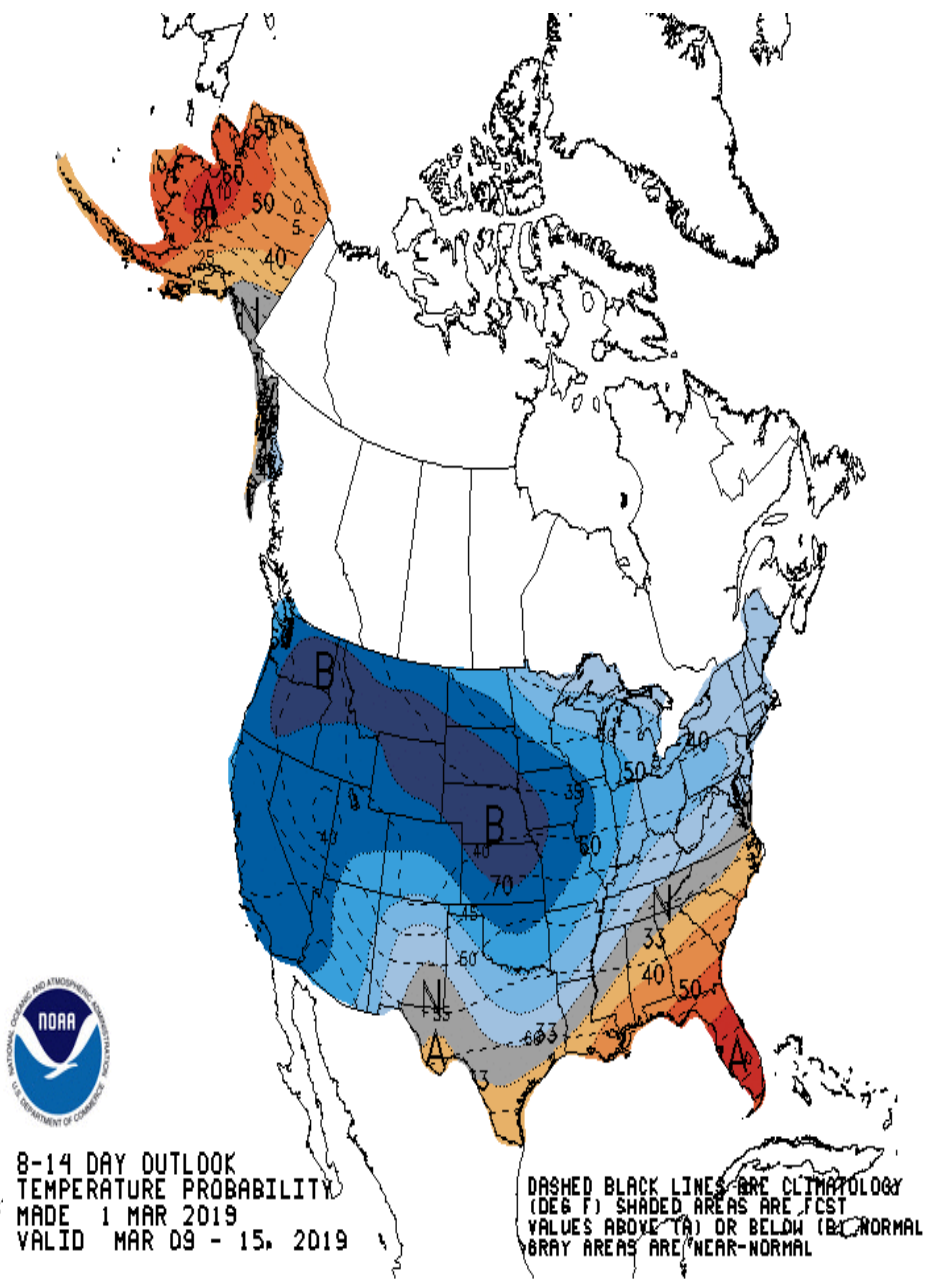
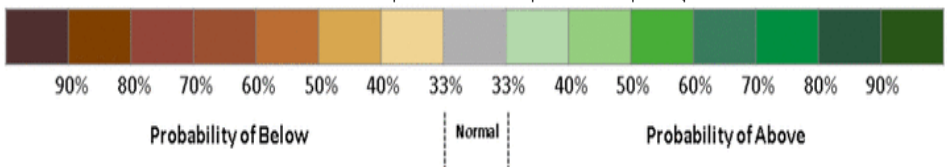
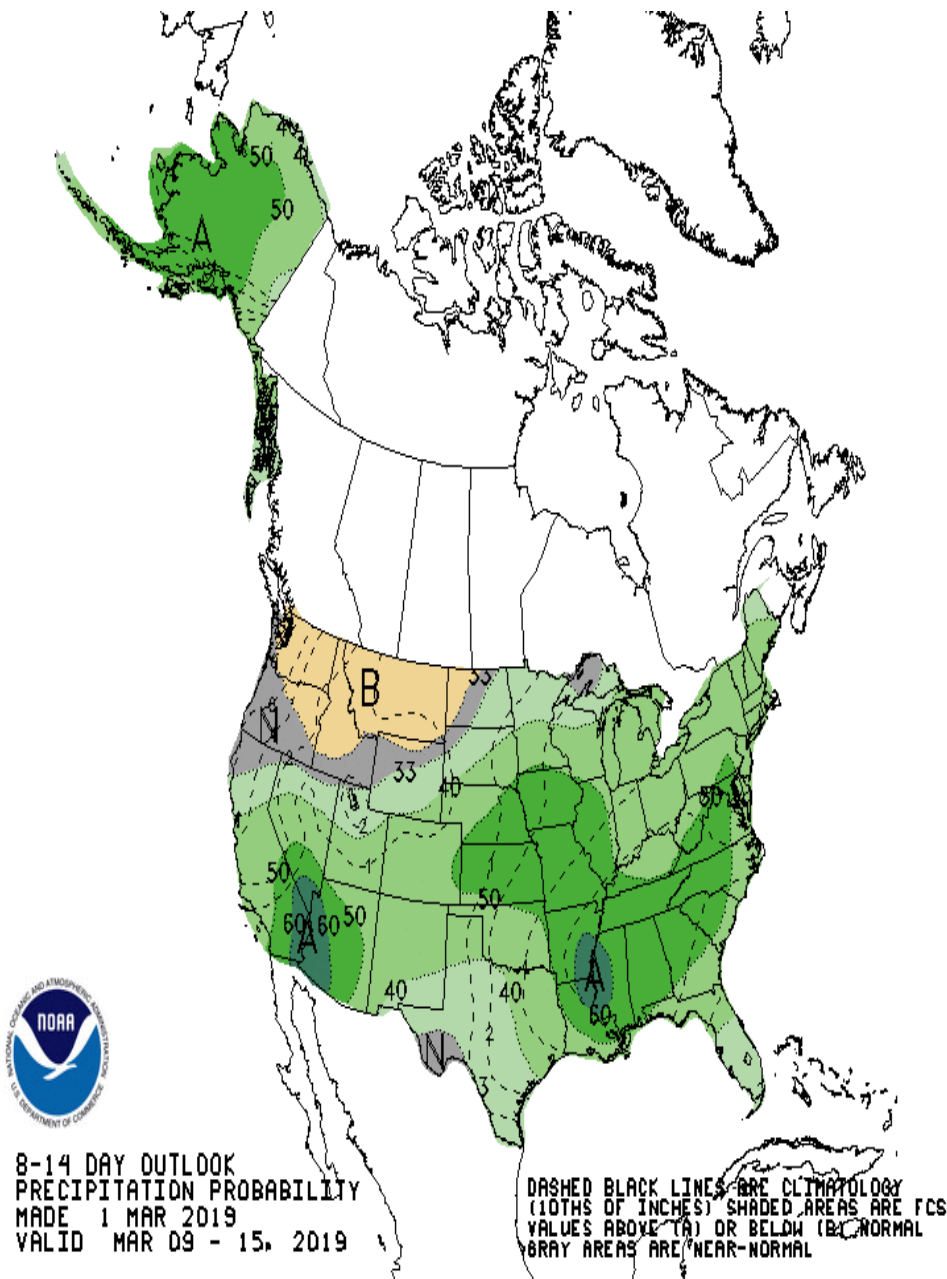
NOAA is predicting 40% above normal precipitation and 60% below normal temperatures (last month's prediction was 60% above) through mid-March in our area. Finally it seems NOAA's precipitation and temperature data is updated timely again. The snow pack in the upper part of the state (where we get our water) is even better and the southeast area has had a huge rebound. This is great news for the 7 States which rely on the Colorado River, and a stark change from last year or even last Month.

Precipitation



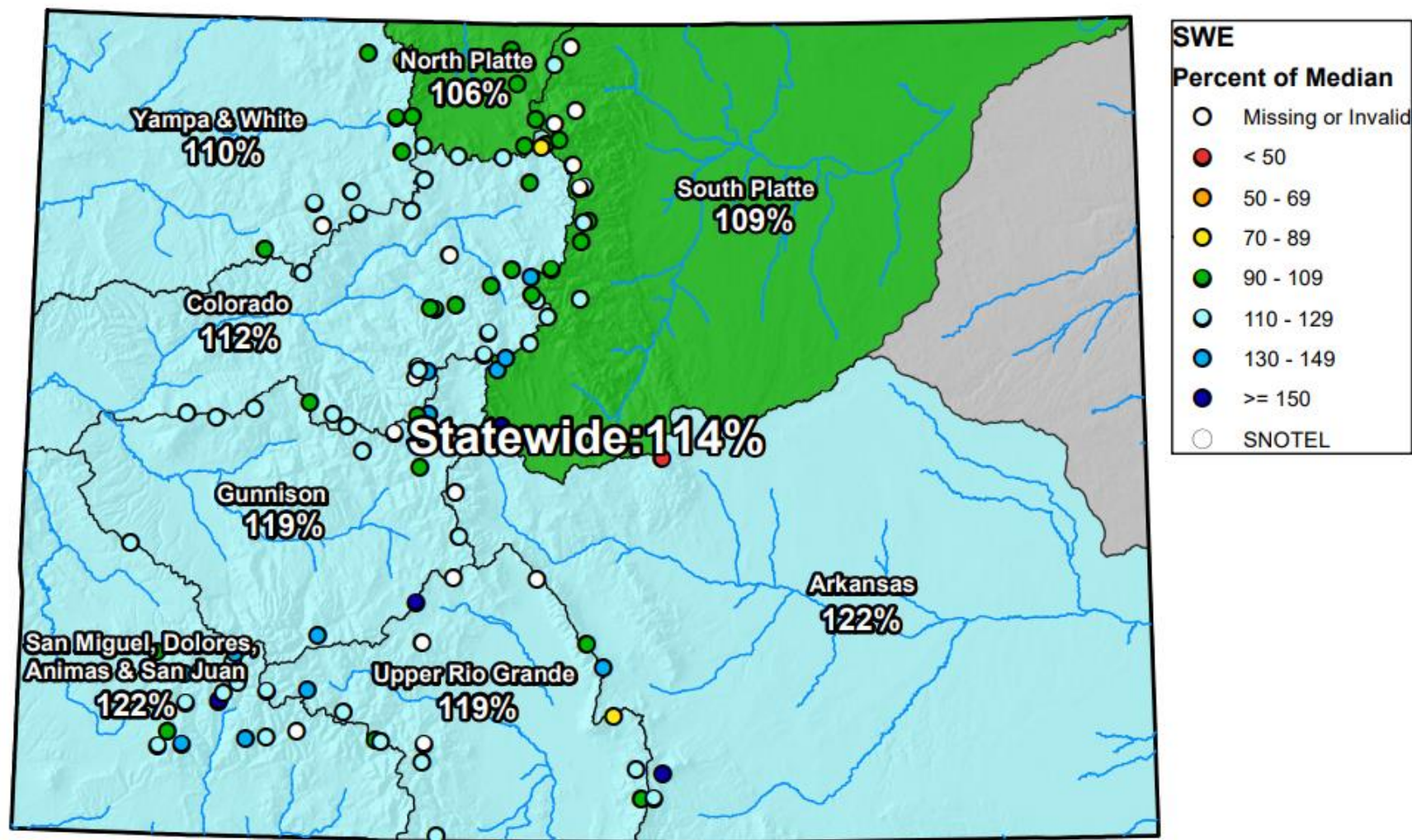
Mean Temperature





Colorado SNOTEL Snow Water Equivalent (SWE) Update Map with Site Data

Current as of Feb 28, 2019



0 25 50 100 150 200 Miles



United States Department of Agriculture
Natural Resources Conservation Service