

**TOWN OF ERIE**  
**BOARD OF TRUSTEE AGENDA ITEM**  
**Board Meeting Date: September 27, 2016**

---

<b>SUBJECT:</b>	<b>Agenda # 16-365:</b>  Consideration Of A Resolution By The Board Of Trustees Of The Town Of Erie, Colorado Accepting Dedications As Shown In The Erie Air Park Subdivision, 1st Amendment Final Plat; Authorizing The Appropriate Town Official To Sign The Erie Air Park Subdivision, 1st Amendment Final Plat; Adopting Certain Findings Of Fact And Conclusions Favorable To Acceptance Of The Dedications; And, Setting Forth Details In Relation Thereto.
<b>CODE REVIEW:</b>	Erie Municipal Code, Title 10
<b>PURPOSE:</b>	Board of Trustees acceptance of dedications on the Erie Air Park Subdivision, 1 <sup>st</sup> Amendment Final Plat.
<b>DEPARTMENT:</b>	Community Development
<b>PRESENTER:</b>	Deborah Bachelder AICP, Senior Planner

---

<b>STAFF RECOMMENDATION:</b>	Approval
------------------------------	----------

---

**SUMMARY AND BACKGROUND OF SUBJECT MATTER:**

---

**Location:**

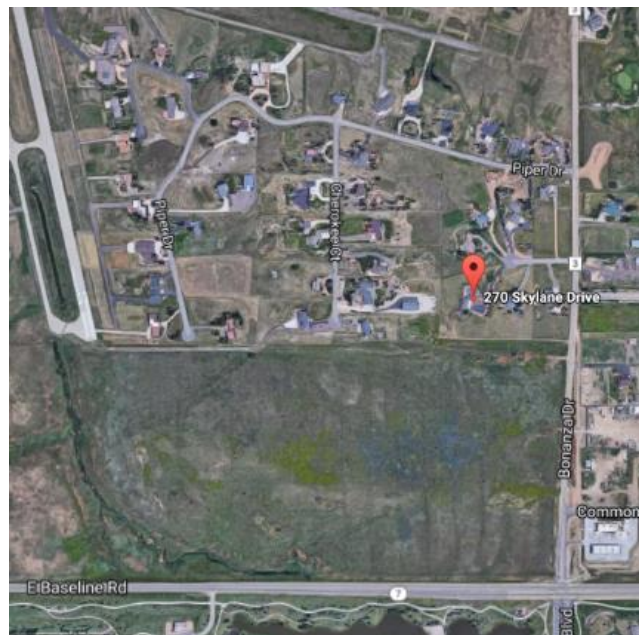
270 Skylane Drive  
Erie Airpark Subdivision

**Owners:**

Hideaki "Heidi" Yamamoto and  
Diane Shima Miyahara Yamamoto

**Summary:**

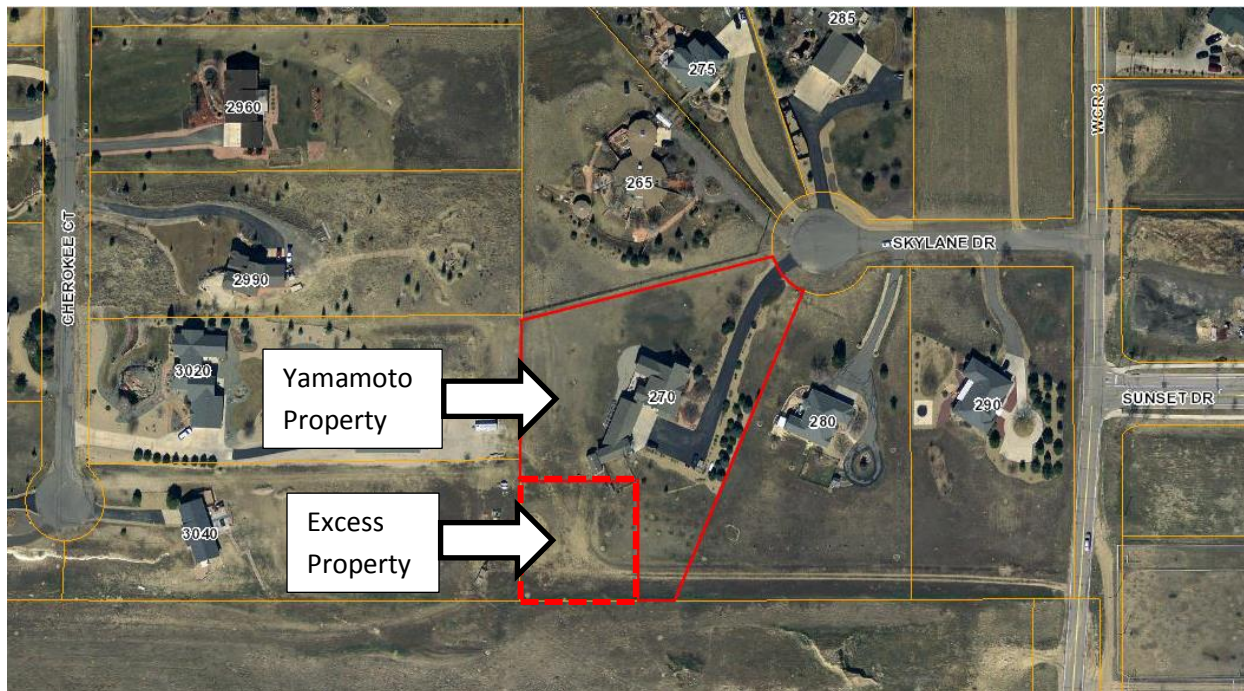
The Resolution, provided for consideration by the Board of Trustees, accepts dedications on the plat and authorizes the appropriate Town official to sign the Erie Air Park Subdivision, 1<sup>st</sup> Amendment Final Plat.



### **Project Description:**

At the April 2016 election, the residents of the Town of Erie approved the sale of a 0.517 acre, Town owned property to the adjacent property owners, Heidi and Diane Yamamoto. The property is an excess property that originally had a water tank on it which has been removed. The Erie Air Park Subdivision, 1<sup>st</sup> Amendment Final Plat adds the excess property to the Yamamotos existing lot at 270 Skyline Drive. The plat provides an easement on the south side of the property for the existing Town water line.

Below is an aerial map that shows the Yamamotos current single family residential lot at 270 Skyline Drive. The excess property that is being added to their residential lot in this Final Plat is outlined in dashed red line.



### **Project Process:**

The Community Development Director and Public Works Director have conditionally approved the Erie Air Park Subdivision, 1<sup>st</sup> Amendment Final Plat, contingent upon the acceptance of the dedications by the Board of Trustees and the filing of appropriate documents with Town staff.

### **Public Notice:**

Public Notice is not required.