



Board Study Session Transportation Planning Update

November 14, 2023
Town Board Presentation



Agenda

- RTD Annexation
 - Questions from BOT
- Transit Planning
- Transportation and Mobility Plan (TMP)
- Grants
- Regional Projects

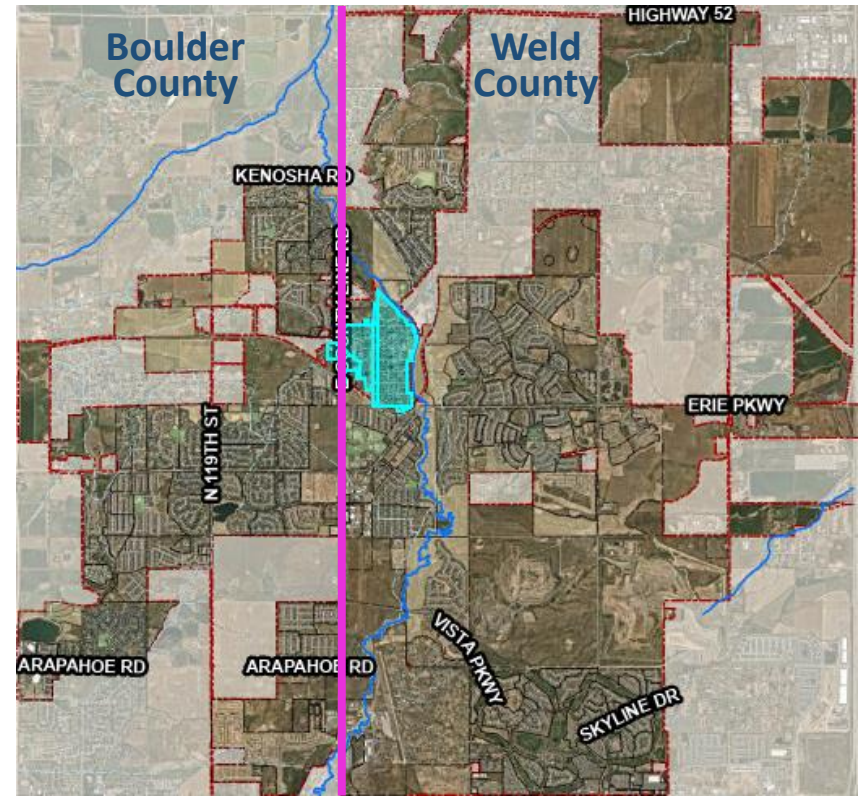


RTD Annexation

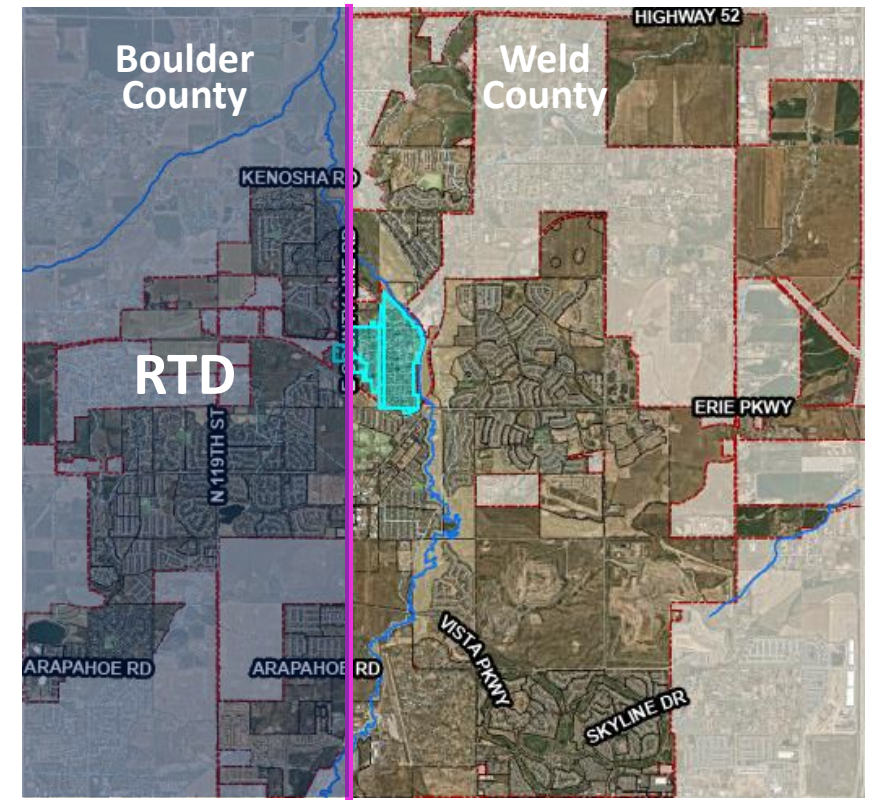


How did Erie get into RTD?

1968



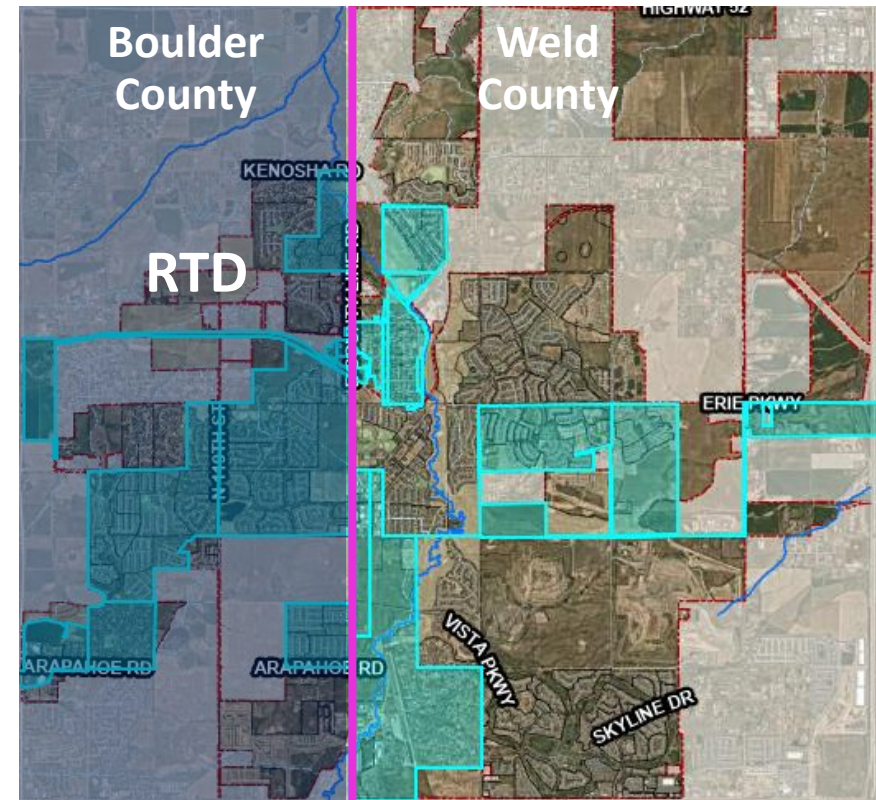
1969



1994 – RTD Annexation Policy

Any time a city or town whose boundary lies completely or partially within RTD annexes any new property currently outside the district, that newly annexed property automatically becomes part of RTD.

1994

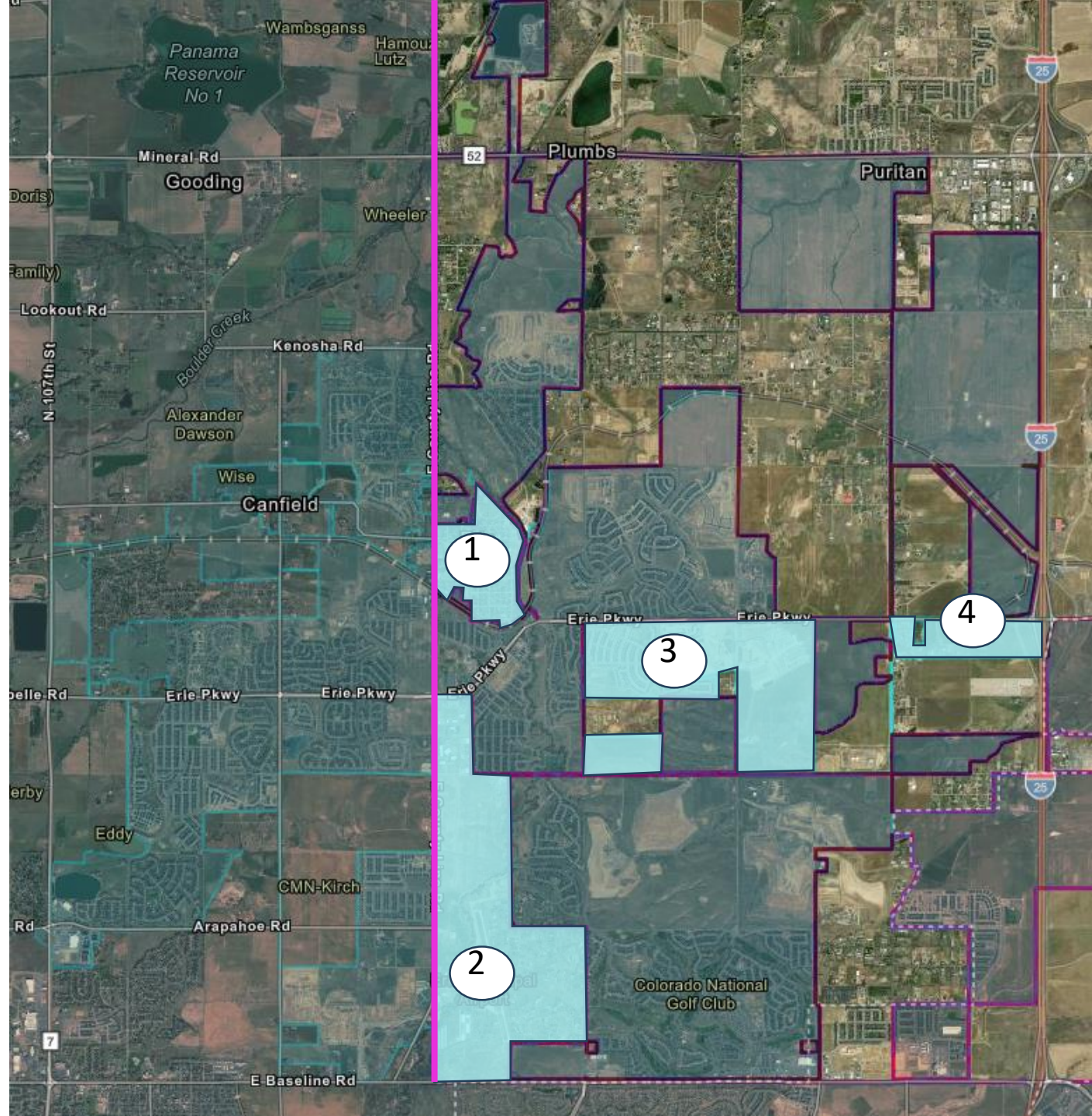




RTD and Town Boundaries Today

Legend

- Town of Erie
- RTD
- County Line Road



Considerations to Annexation

Opportunities

- Eliminate confusion
- Whole Town to be serviced
- Grants
- Extend JUMP route
- Access-A-Ride widely available



Considerations to Annexation

Challenges

- More sales tax going into RTD
- Service not guaranteed in annexed areas
- Need bus stops constructed
- RTD unable to construct new stops
- Complicated and long process





Considerations to Annexation

- RTD is funded through Sales/Use Tax, NOT property or income tax
- We do not control where sales occur, but likely will in the RTD district
- Erie sales leakage is approx. 70%
 - In RTD sales in Boulder, Broomfield, Thornton, Denver
 - Out of RTD in Greeley, Frederick, Fort Collins

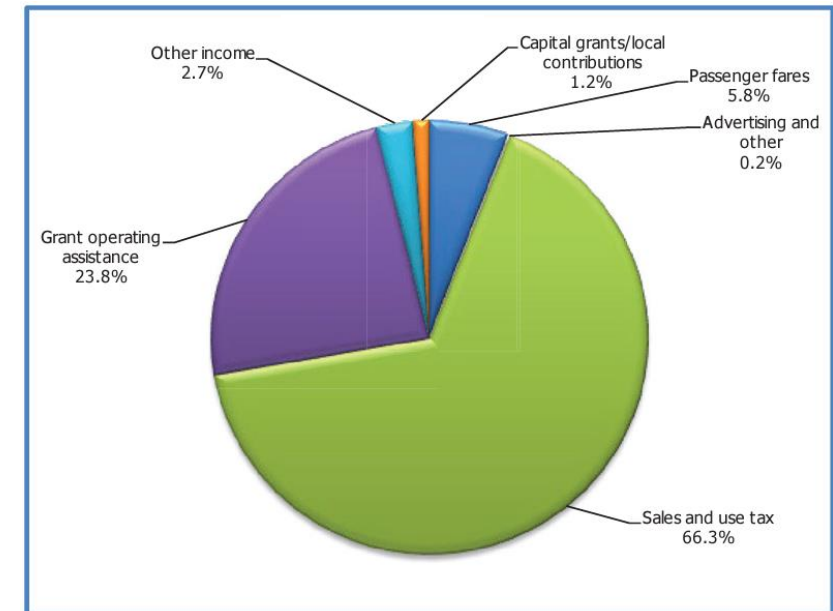
Considerations to Annexation

Withdrawing from RTD:

- Loss of JUMP route to ECC
- Loss of grant opportunities
- Boulder County side remains in RTD

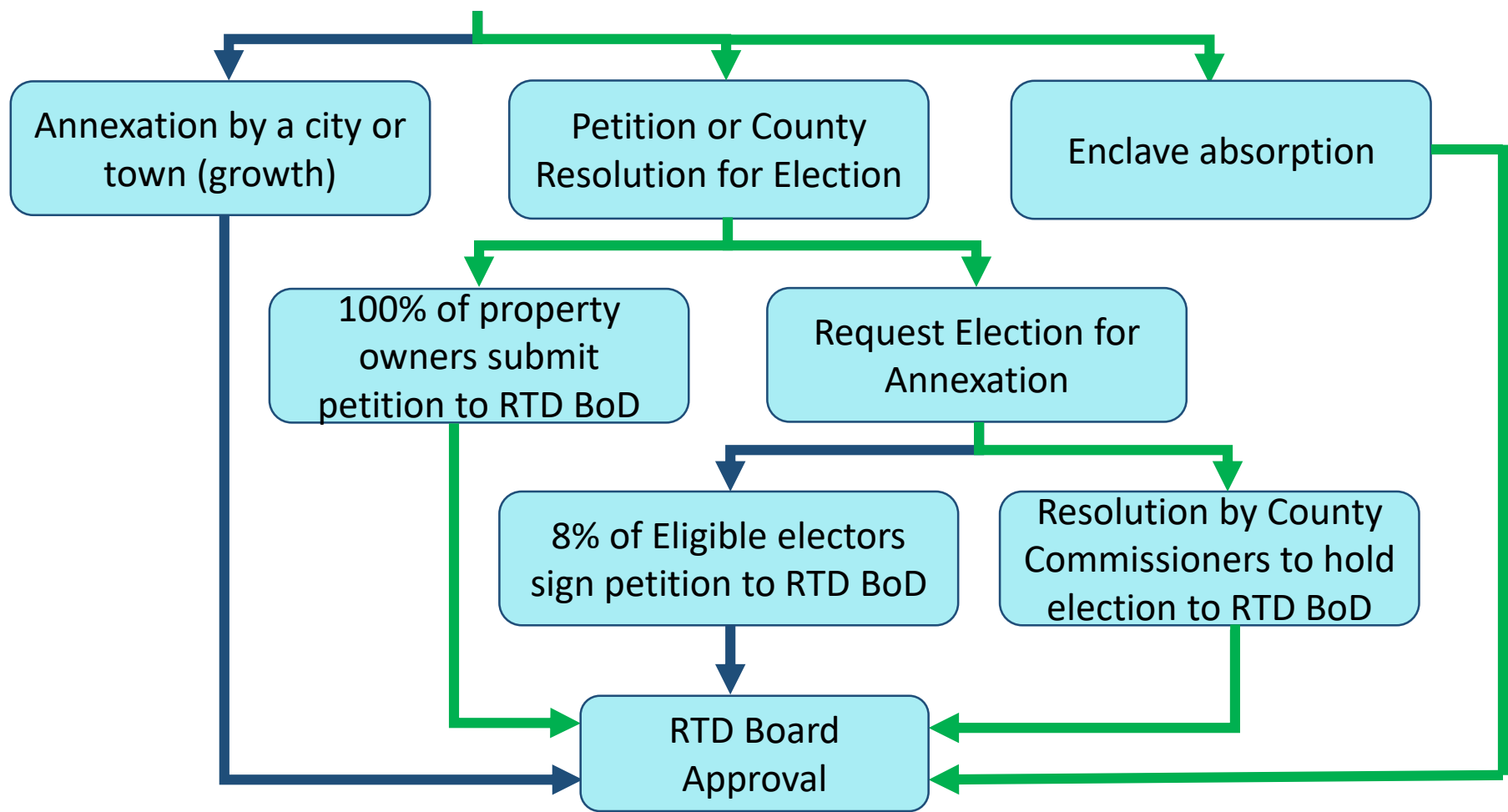
Annex into or leave RTD – tax result is the same. Sales tax is still generated for RTD by Erie residents.

RTD Revenue - 2022





Paths to Annexation



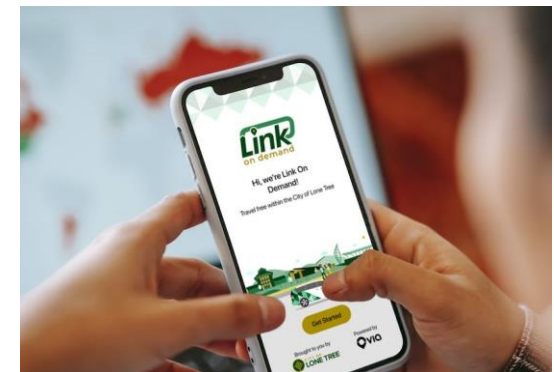


Transit Planning



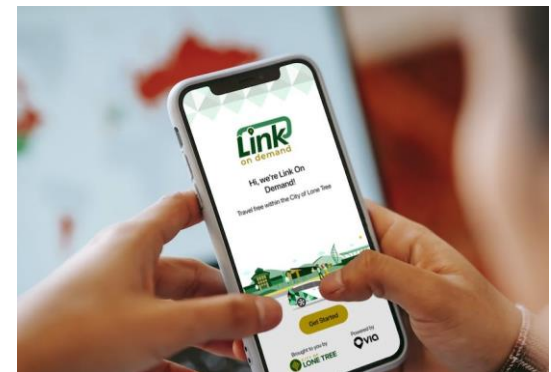
Flex Ride Service

- Localized transit service
- Curb to curb service
- Similar to uber and lyft
- Reserve a ride online, via phone number or mobile app
- Free for users to/from Town (Funded through grants)

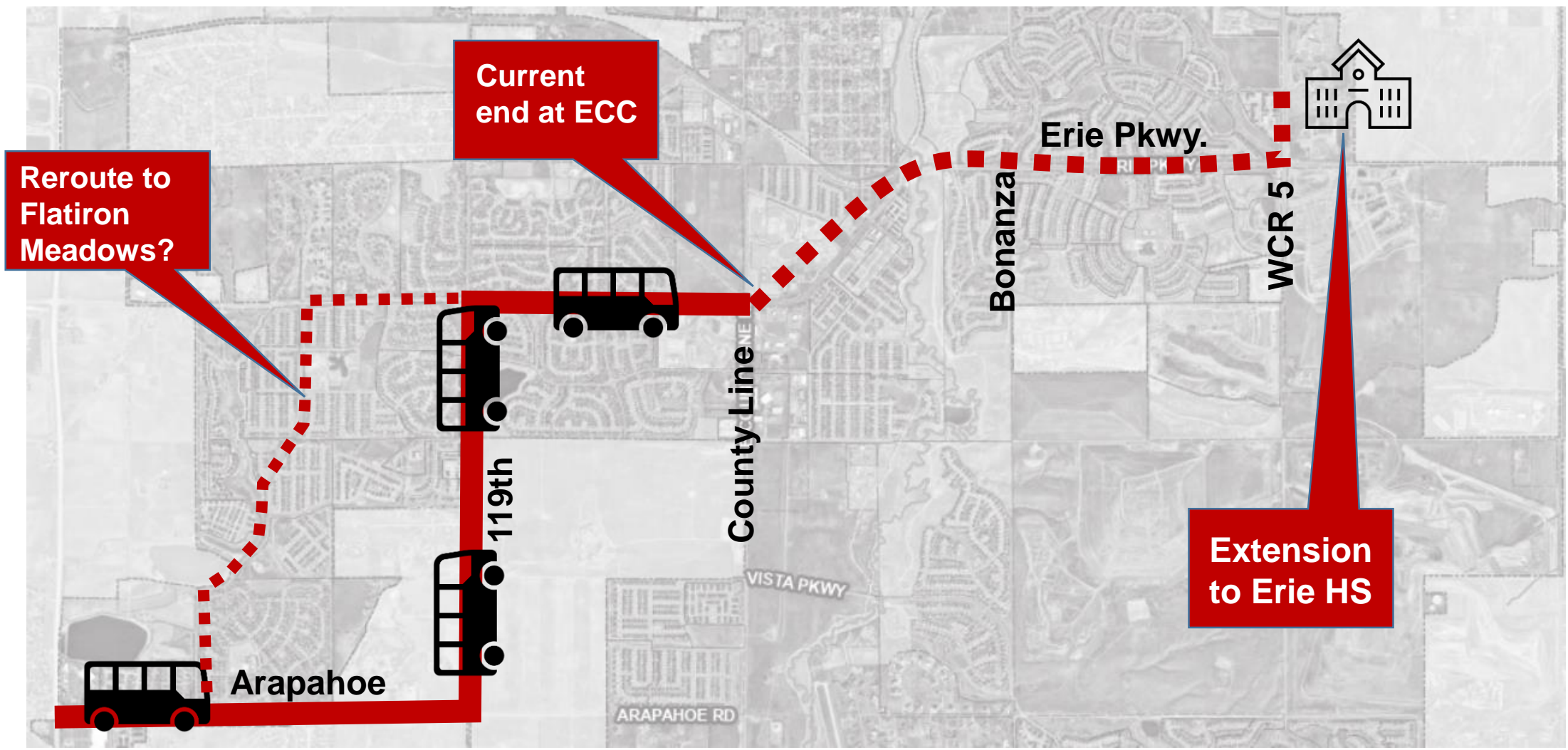


Flex Ride Service – Service Development

- Research providers & forms of microtransit
- Public Outreach
- Survey
- RFP
- Marketing & Branding



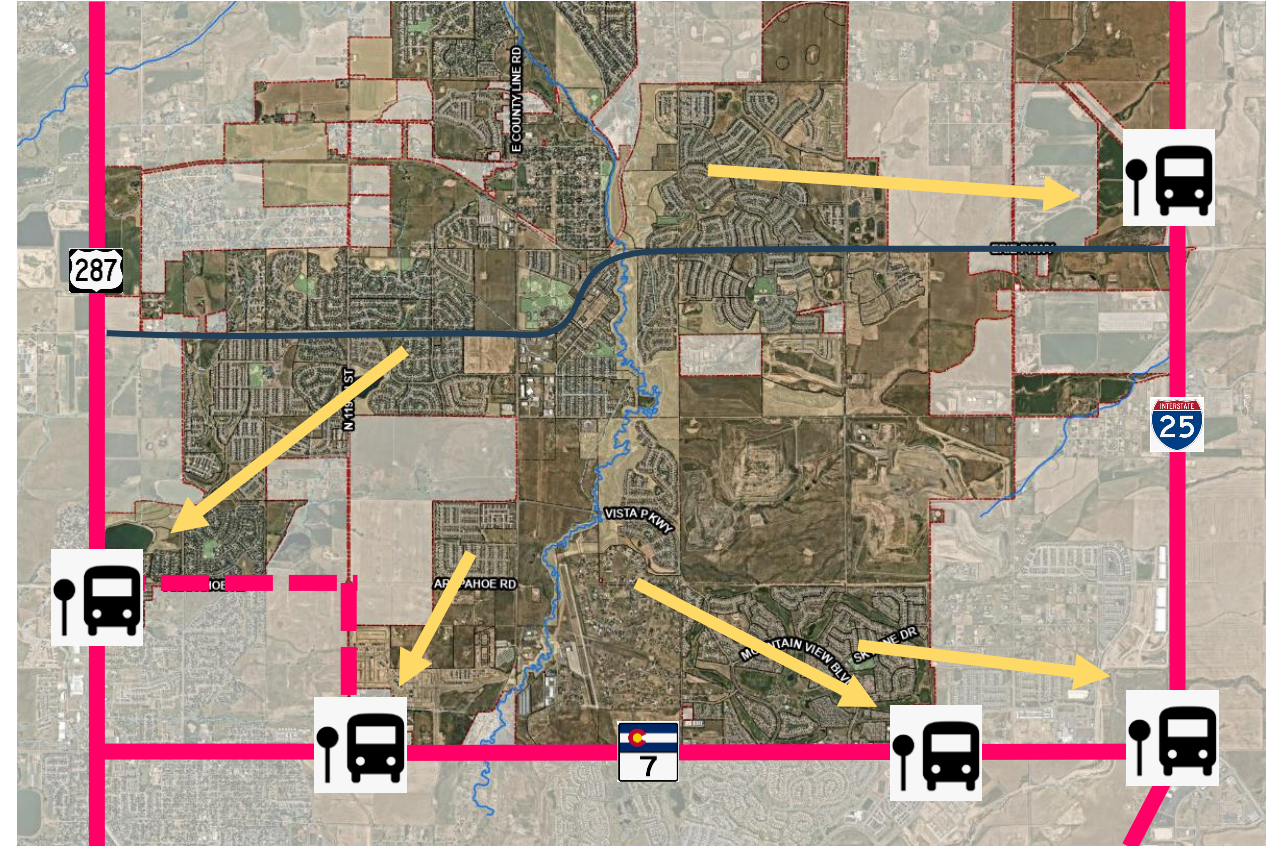
RTD JUMP Extension to Erie High School



Flex Ride Service – Service Development

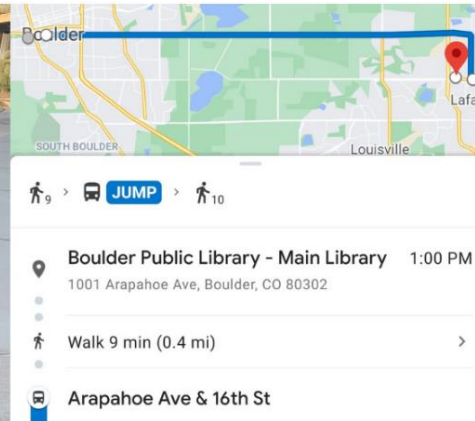
- CO 7 BRT
- North I-25 BRT
- US 287 BRT

- First/Last connection through Flex Ride



Regional Transit Opportunities

- Boulder County Strategic Transit Plan
- Boulder County Super Flex Ride
- Boulder County Mobility for All
- Broomfield Flex Ride



MOBILITY FOR ALL

Feel Confident Using Smartphone Apps that Help you Get Around

Free 90-minute smartphone app workshops offered:

- Google Maps
- Transit App
- RTD Mobile Ticketing
- lyft Ridesharing App
- Uber Ridesharing App

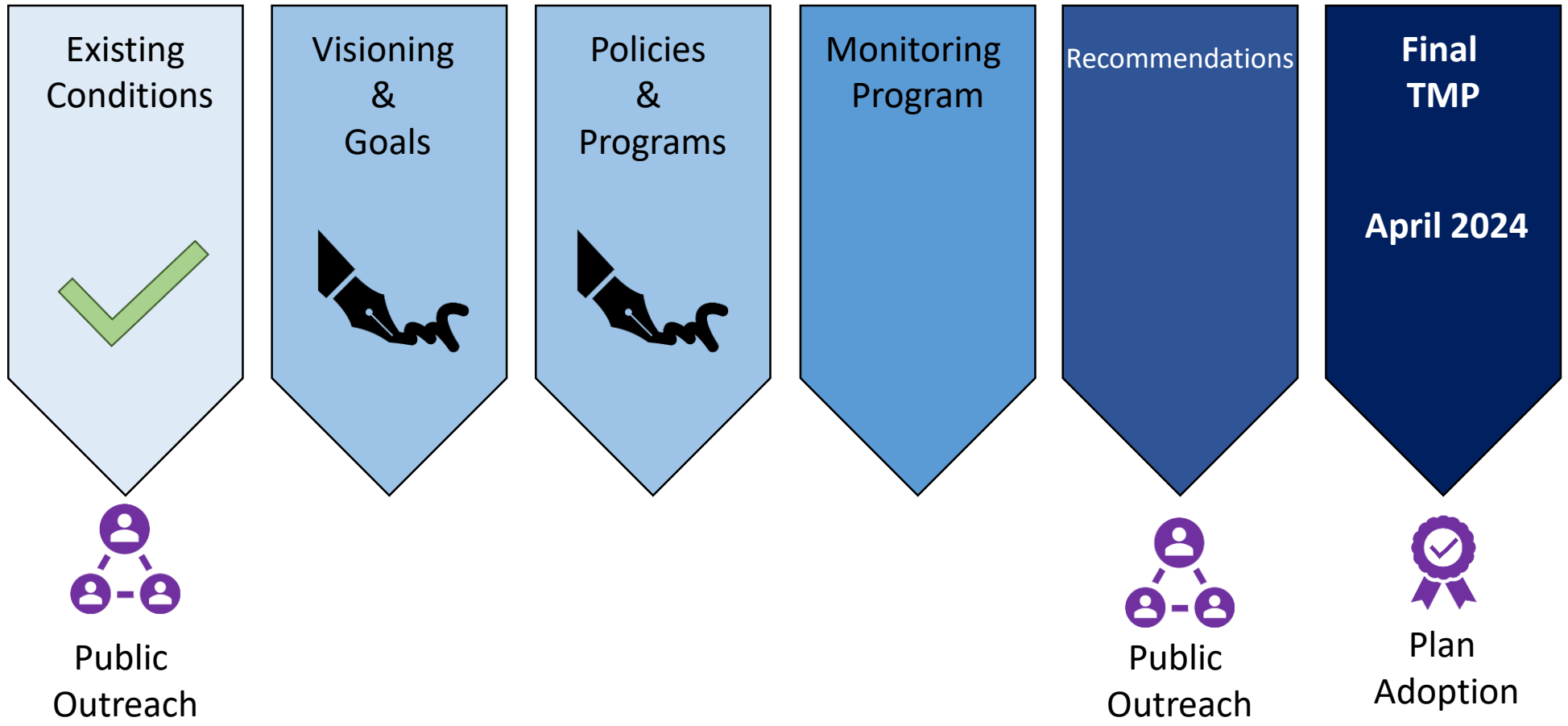
Free transportation credits or passes upon completion of each workshop.



Transportation and Mobility Planning



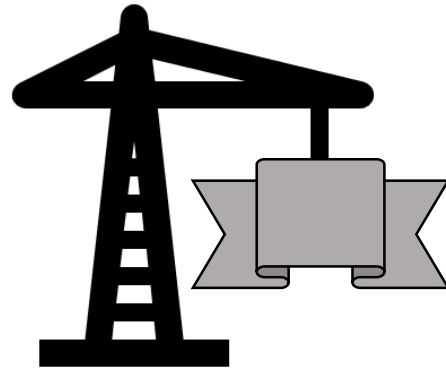
Transportation and Mobility Plan



Transportation and Mobility Plan

Vision & Goals

- Statement
- Objectives
- Guiding Principles



Policies & Programs

- Pedestrian
- Bicycle
- Transit
- Driving
- Emerging Mobility/Tech
- Subset Transportation Plans



Grants





Scheduling of Grants

Awarded Grants	Sponsor	Amount	Year
Erie Flex Ride - Erie (DRCOG HHS)	Erie	\$ 200,000	2023
Safe Routes to School Action Plan	Boulder County	\$359,000	2024
Erie Flex Ride – Boulder (DRCOG TIP)	Erie	\$ 540,000	2025
Erie Flex Ride – Weld (DRCOG TIP)	Erie	\$ 540,000	2025
I-25 Study	Erie	\$ 360,000	2025
CO 7 BRT Service	Boulder County	\$ 6,494,000	2025
Super Flex Ride	Boulder County	\$ 3,325,000	2025
CO 52 Safety Improvements	Erie	\$ 320,000	2026
Transit Plan for Gateway	Erie	\$ 150,000	2026
Transit Service Strategic Plan	Boulder County	\$1,198,000	2026
TOTAL		\$13,886,000	
ERIE TOTAL		\$ 2,110,000	



Upcoming 2024 Grants

- Safer Streets For All
- CDOT Transportation Alternatives Program
- DRCOG Health and Human Services
- DRCOG Community Mobility Planning
- RTD Partnership



Regional Grants



US 287 Safety Project

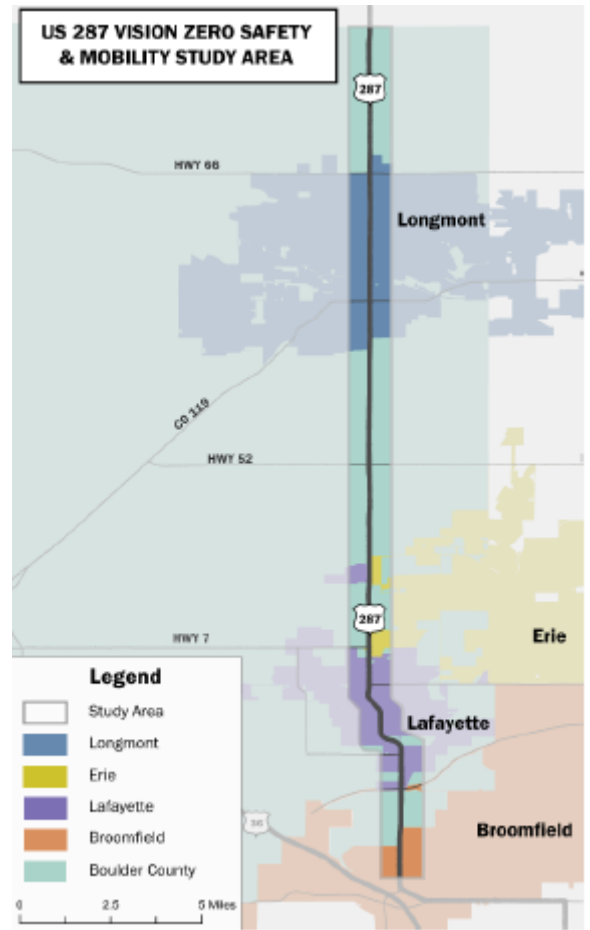
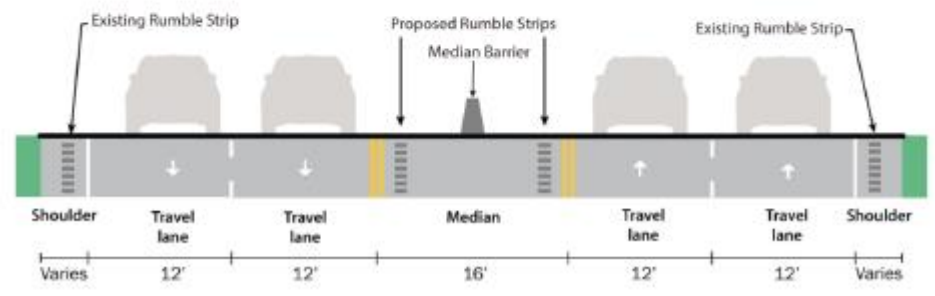


Figure X. US 287 Proposed Median Barrier Cross Section





CO 7 Improvements



E-Bike Share Feasibility Study

