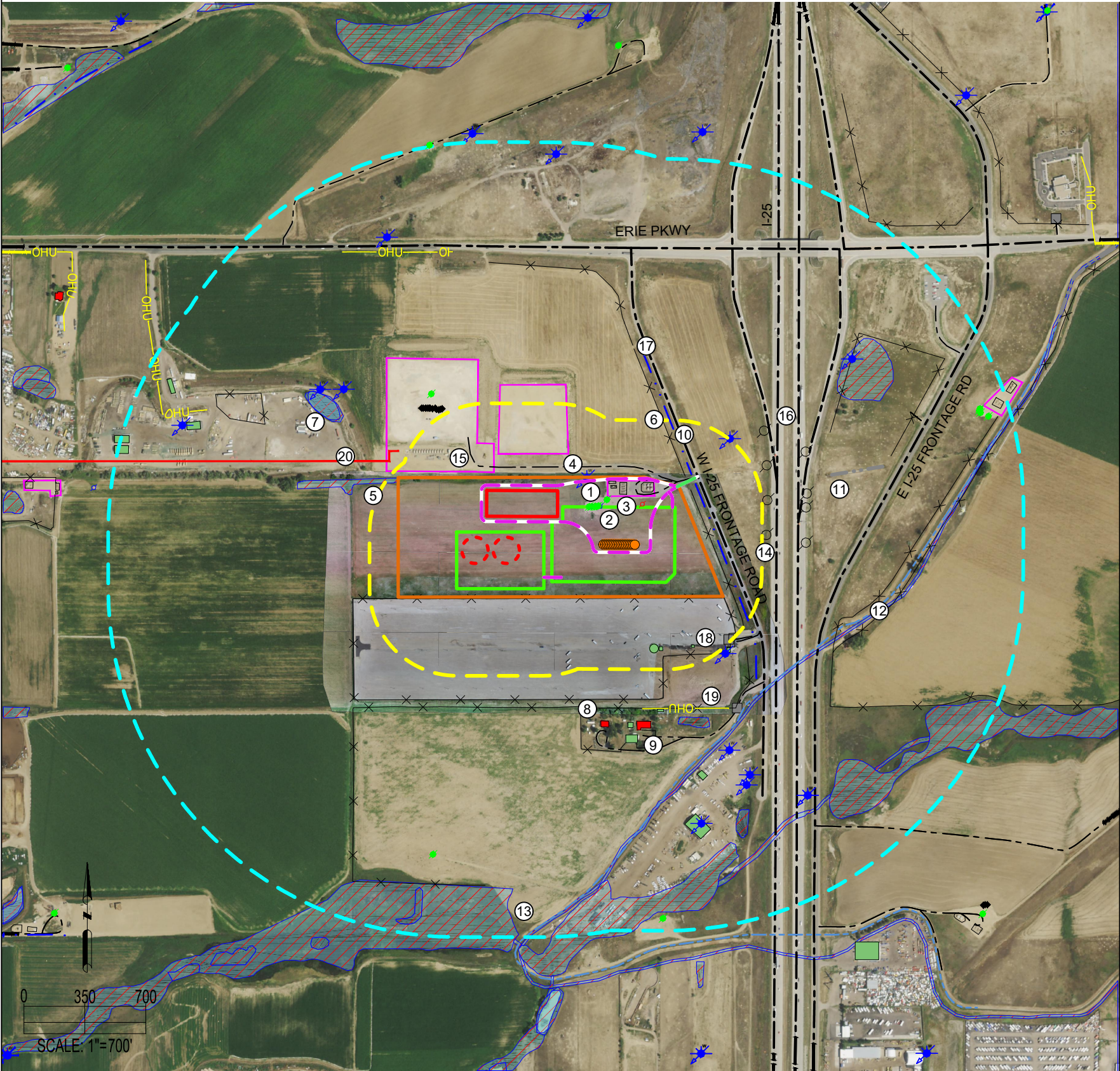


COSSLETT EAST 22H-H168 PAD
LOCATION DRAWING



IMPROVEMENTS: (AS MEASURED FROM THE PROPOSED WORKING PAD SURFACE)	
1. EXISTING WELLS:	±2' N, ±2' N, ±2' N, ±6' N, ±534' NW, ±536' NW, ±538' NW, ±548' NW, ±557' NW, ±563' NW, ±573' NW, ±577' NW, ±583' NW, ±588' NW, ±596' NW, ±602' NW
2. ABANDONED WELLS:	±2' N, ±2' N, ±3' N, ±42' N, ±639' NW, ±17' N, ±1833' NE, ±1835' NW, ±1839' NE, ±1873' NE, ±1531' S, ±1929' S
3. EXISTING FACILITIES:	±62' N, ±104' N, ±211' N, ±1865' NE
4. WATER WELLS:	±168' N (NOT IN THIS LOCATION PER FIELD VERIFICATION), ±505' NE, 533' SE, ±1030' SE, ±1206' SE, ±1252' SE, ±1469' SE, ±1689' NW, ±1005' NW, ±1118' NE, ±1562' NW, ±1933' N, ±1326' NE
5. WETLANDS:	±446' NW, ±928' NW, ±1148' NE, ±778' S, ±1375' SE, ±1539' SE
6. FENCE:	±73' N, ±108' N, ±135' N, ±87' N, ±121' NE, ±56' S, ±679' S, ±988' NE, ±982' SE, ±1262' NW, ±1913' NE, ±1262' NW, ±1913' NE, ±1983' NE
7. POND:	±940' NW
8. BUILDING UNIT:	±798' S, ±798' S
9. BUILDING:	±805' S, ±730' S, ±876' S, ±1339' SE, ±1099' SE, ±1948' NW, ±1584' NW, ±1936' NW, ±1800' NW, ±355' S, ±371' S, ±388' SE, ±513' SE
10. DITCH:	±160' NE
11. CONCRETE DITCH:	±880' NE
12. CANAL:	±836' SE
13. STREAM:	±850' SE, ±1544' SE, ±1899' S
14. LIGHT POLE:	±674' NE, ±579' NE, ±815' NE, ±752' E, ±760' E, ±531' E, ±525' E
15. EXISTING ROADS:	±147' N, ±776' SE, ±1639' SE
16. I-25:	±572' E
17. I-25 FRONTAGE ROAD:	±707' E, ±176' E
18. GATES:	±487' SE, ±503' SE, ±830' SE
19. OVERHEAD UTILITIES:	±1595' NW, ±1383' N, ±726' S
20. EXISTING FLOWLINE:	±553' NW

DATA SOURCE:
AERIAL IMAGERY: NAIP 2019, ASCENT 06/2020
WATER WELLS: COLORADO DWR
NHD: USGS

PUBLICLY AVAILABLE DATA SOURCES HAVE NOT
BEEN INDEPENDENTLY VERIFIED BY ASCENT.

OIL & GAS SURFACE ACREAGE:

27.1 ACRES OIL & GAS LOCATION
11.9 ACRES WORKING PAD SURFACE
10.6 ACRES INTERIM RECLAIM

REFERENCE LOCATION
COSSETT EAST FED 1A-22H-H168

LAT: 40.039232° N
LONG: 104.984366° W
ELEVATION: 5183'
1715' FNL & 1209' FEL
PDOP: 1.3
GPS OPERATOR: RYAN DESMOND

DISCLAIMER:
THIS PLOT DOES NOT REPRESENT A MONUMENTED LAND SURVEY AND SHOULD NOT BE RELIED UPON TO DETERMINE BOUNDARY LINES.
PROPERTY OWNERSHIP OR OTHER PROPERTY INTERESTS, PARCEL LINES, IF DEPICTED HAVE NOT BEEN FIELD VERIFIED AND MAY BE BASED
UPON PUBLICLY AVAILABLE DATA THAT ALSO HAS NOT BEEN INDEPENDENTLY VERIFIED.

CURRENT SURFACE USE: DRY LAND CROP
FUTURE SURFACE USE: DRY LAND CROP

ASCENT
GEOMATICS SOLUTIONS
8620 Wolff Court
Westminster, CO 80031
(303) 928-7128
www.ascentgeomatics.com

FIELD
DATE:
07-24-19

DRAWING
DATE:
08-19-21

DRAWN BY:
CSG

CHECKED BY:
IJM

SITE NAME:
COSSETT EAST 22H-H168 PAD
SURFACE LOCATION:
SE 1/4 NE 1/4 SEC. 22, T1N, R68W, 6TH P.M.
WELD COUNTY, COLORADO

LEGEND:
● = PROPOSED WELL
○ = DRY & ABANDONED WELL
★ = WATER WELL
◆ = EXISTING WELL
⬢ = TEMPORARILY ABANDONED WELL
--- = CONCRETE DITCH
--- = PROPOSED ACCESS ROAD
--- = EXISTING ACCESS (TO BE IMPROVED)
--- = STREAM
--- = PRIVATE ROAD
--- = PUBLIC ROAD
--- = CANAL
--- = FENCE
--- = OVERHEAD UTILITY
--- = DITCH

--- = CONCRETE DITCH
--- = PROPOSED ACCESS ROAD
--- = EXISTING ACCESS (TO BE IMPROVED)
--- = STREAM
--- = PRIVATE ROAD
--- = PUBLIC ROAD

--- = 2000' RADIUS
--- = 500' RADIUS
--- = GATE
--- = WETLAND
--- = PROPOSED FACILITY

--- = BUILDING
--- = POND
--- = PROPOSED MLVT
--- = OIL & GAS LOCATION
--- = RESIDENTIAL BUILDING UNIT

--- = EXISTING FACILITY
--- = WORKING PAD SURFACE
--- = EXISTING FLOWLINE

PREPARED FOR:
CRESTONE PEAK
RESOURCES