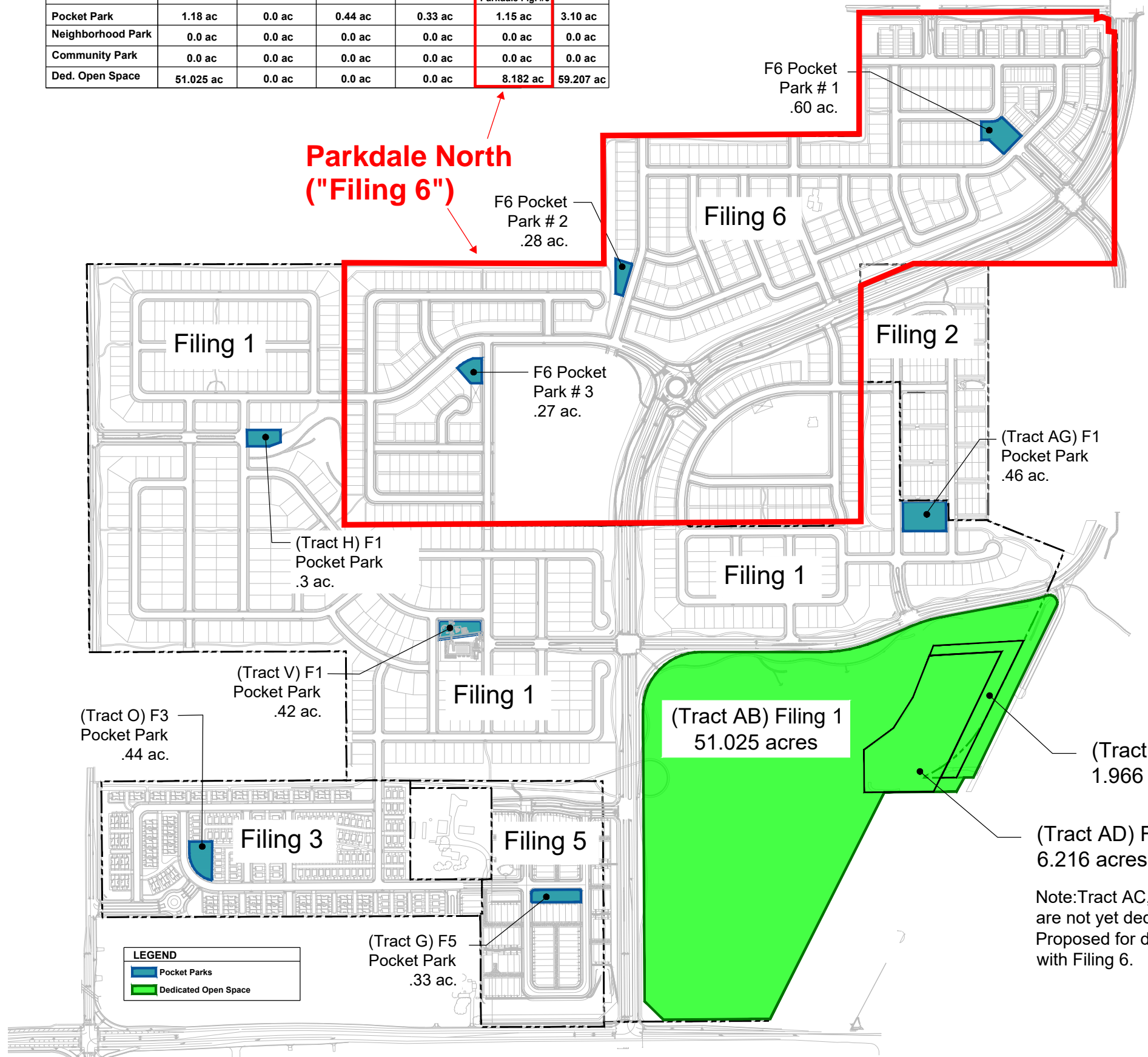


| Type              | Provided         |                  |                  |                  |                         | Total     |
|-------------------|------------------|------------------|------------------|------------------|-------------------------|-----------|
|                   | Parkdale Fig. #1 | Parkdale Fig. #2 | Parkdale Fig. #3 | Parkdale Fig. #5 | Future Parkdale Fig. #6 |           |
| Pocket Park       | 1.18 ac          | 0.0 ac           | 0.44 ac          | 0.33 ac          | 1.15 ac                 | 3.10 ac   |
| Neighborhood Park | 0.0 ac           | 0.0 ac           | 0.0 ac           | 0.0 ac           | 0.0 ac                  | 0.0 ac    |
| Community Park    | 0.0 ac           | 0.0 ac           | 0.0 ac           | 0.0 ac           | 0.0 ac                  | 0.0 ac    |
| Ded. Open Space   | 51.025 ac        | 0.0 ac           | 0.0 ac           | 0.0 ac           | 8.182 ac                | 59.207 ac |

### Parkdale - Open Space & Park Dedication Requirements

| Proposed # of Units   | 1,430        | Type.                     |
|---|--------------|---------------------------|
| Parkdale Filing #1- SFD   | 481          | SFD                       |
| Parkdale Filing #2-Duplex (Lennar)                                  | 114          | Dup.                      |
| Parkdale Filing #3-Duplex (Penner/Thero)                            | 96           | Dup.                      |
| Parkdale Filing #3-SFD (Penner/Thero)                               | 113          | SFD                       |
| Parkdale Filing #5-SFD (Master's)                                   | 94           | SFD                       |
| Future Parkdale Filing #6-SFD (North)                               | 406          | SFD                       |
| Future Parkdale Filing #6-TH (North)                                | 126          | TH                        |
| Residents per Single Family Household                               | 2.99         |                           |
| Residents per TownHome/Duplex Household                             | 2.10         |                           |
| Population Generated  | 3,977        |                           |
| <b>Dedicated Open Space Requirement (Cost per acre = \$48,500)</b>  |              |                           |
| <b>Requirement: 17 acres/1,000 residents</b>                        |              |                           |
| Total Residents   | 3,977        |                           |
| Acres of Dedication Open Space Required                             | 67.60        |                           |
| Acres of Dedicated Open Space Provided (Tract AB)                   | 51.03        |                           |
| Future OS. to be dedicated with Filing 6 (Tracts AC, AD)            | 8.18         |                           |
| 6.45 acres short, cash-in-lieu is anticipated                       |              |                           |
| <b>Pocket Park Requirement</b>                                      |              |                           |
| <b>Requirement: 0.5 acres/1,000 residents</b>                       |              |                           |
| Total Residents   | 3,977        |                           |
| Acres of Pocket Parks Required                                      | 1.99         |                           |
| Acres of Pocket Parks Provided                                      | 3.10         |                           |
| requirement met on site - no cash-in-lieu is anticipated            |              |                           |
| <b>Neighborhood Park Requirement (Cost per acre = \$236,564)</b>    |              |                           |
| <b>Requirement: 3.0 acres/1,000 residents</b>                       |              |                           |
| Total Residents   | 3,977        |                           |
| Acres of Neighborhood Parks Required                                | 11.93        |                           |
| 11.93 x \$236,564 =   | \$ 2,741,777 | cash-in-lieu value        |
|   | \$ 1,220,351 | Less: Filing 1&2 DA Fees  |
|   | \$ 12,306    | Less: Filing 3/A1 DA Fees |
|   | \$ 1,509,120 | FIL Remaining             |
| Minimum Neighborhood Park size is 7 acres, cash-in-lieu is required |              |                           |



**Notes:**

1. This exhibit is only be provided for general informational purposes. Filing 6 has not been platted, the number of units and mix is approximate.
2. Filing 4 is not shown because no lots are proposed with this filing and will also be platted as part of Filing 6.

Note: Tract AC, and AD are not yet dedicated. Proposed for dedication with Filing 6.