

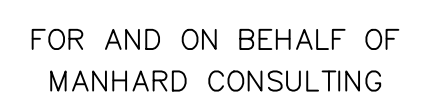
AN AMENDMENT OF TRACT "B", LOTS 11, 12, 18, AND 19 OF BLOCK 2
LOCATED IN THE EAST 1/2 OF THE NORTHWEST QUARTER OF SECTION 23,
TOWNSHIP 1 NORTH, RANGE 69 WEST, OF THE 6TH PRINCIPAL MERIDIAN,
TOWN OF ERIE, COUNTY OF BOULDER, STATE OF COLORADO.

GRAPHIC SCALE

(IN FEET)
1 inch = 40 ft.



= EX. PROPERTY LINE
 --- = EX. SECTION LINE
 --- = EX. LOT LINE
 --- = EX. EASEMENT LINE
 --- = EX. RIGHT-OF-WAY LINE
 --- = PROPOSED LOT LINE
 --- = PROPOSED EASEMENT LINE
 FOUND 1.25" COPPER MARKER EMBEDDED IN CONCRETE, PLS 37066
 ☆ = AT 4' OFFSET FROM CORNER
 ALONG EXTENSION OF PROPERTY LINE
 UNLESS OTHERWISE NOTED
 FOUND NO. 4 REBAR WITH
 ☆ = R.P.C. PL 37066
 UNLESS OTHERWISE NOTED
 SET PK NAIL WITH BRASS SHINER,
 ■ = PLS 38445
 = AT 4' OFFSET FROM CORNER
 ALONG EXTENSION OF PROPERTY LINE
 SET NO. 5 REBAR WITH
 ● = 1.25" R.P.C. PLS 38445
 FLUSH WITH GROUND
 ◆ = SECTION CORNER
 0.00 = BOUNDARY DIMENSION
 0.00 = LOT DIMENSION



Manhard
CONSULTING LTD.

8008 E. Arapahoe Court, Suite 110, Greenwood, CO 80112 ph:303/708-0500 fax:303/708-0400 manhard.com
Civil Engineers • Surveyors • Water Resources Engineers • Water & Wastewater Engineers
Construction Managers • Environmental Scientists • Landscape Architects • Planners

PROJ. MGR.: DJH
 PROJ. ASSOC.: DJH
 DRAWN BY: DJH
 DATE: 08/29/16
 SCALE: 1"=40'

SHEET

2 OF 2

OCH.ERC001.00