

Project Narrative

We are hoping to showcase the bell tower by replacing the current louvers with windows and illuminating it with lighting at night. Attached is a rendering showing one possible look with mullions in the windows and product data sheets that show the proposed window type (without mullions). The mullions add an architectural element somewhat consistent with the other building windows but the mullions are not needed structurally. Windows would be installed on the West and South facing of the bell tower since the other two are not really visible from the street views to the east and north.

The bell tower was open to outside air historically, so aesthetically the windows would be closer to the original appearance, when the bell could be viewed from the street/front of the building. Going back to fully open air would not be a preferred option because the windows would help protect from the elements, keep birds/pests out, and allow for lighting to be installed lighting to showcase the bell. Hoping this would be welcomed by HPAB to showcase this historic bell that had been covered up with the louvres during a previous renovation.

Photo 1: Lincoln School circa 1920 – Bell tower is open air.



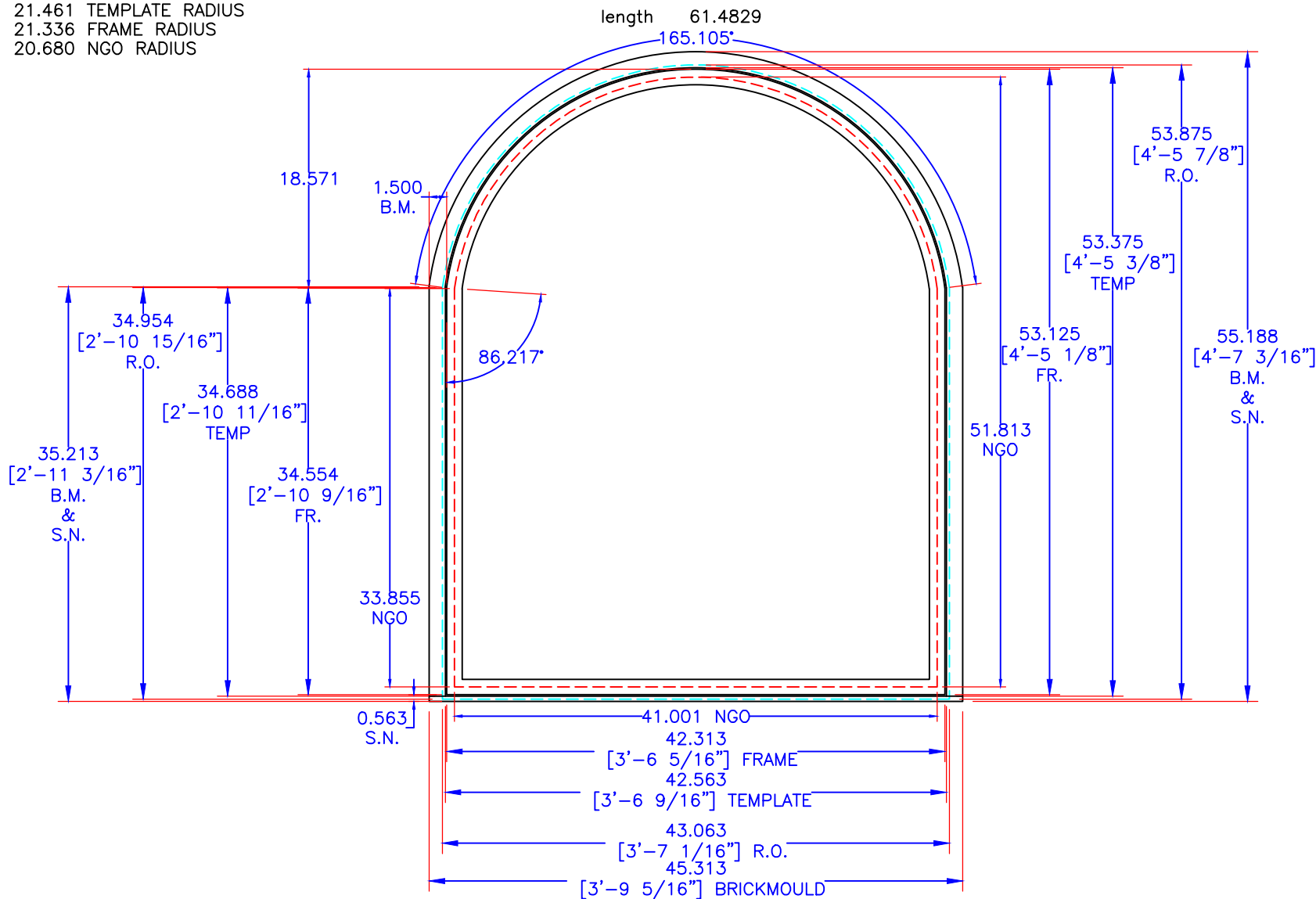
Photo 2: Current state of the bell tower. Louvres were added in a past renovation.







22.836 BRICKMOULD RADIUS
 21.711 ROUGH OPENING RADIUS
 21.461 TEMPLATE RADIUS
 21.336 FRAME RADIUS
 20.680 NGO RADIUS

THIS DRAWING WAS MADE FROM SOLID CARDBOARD TEMPLATE



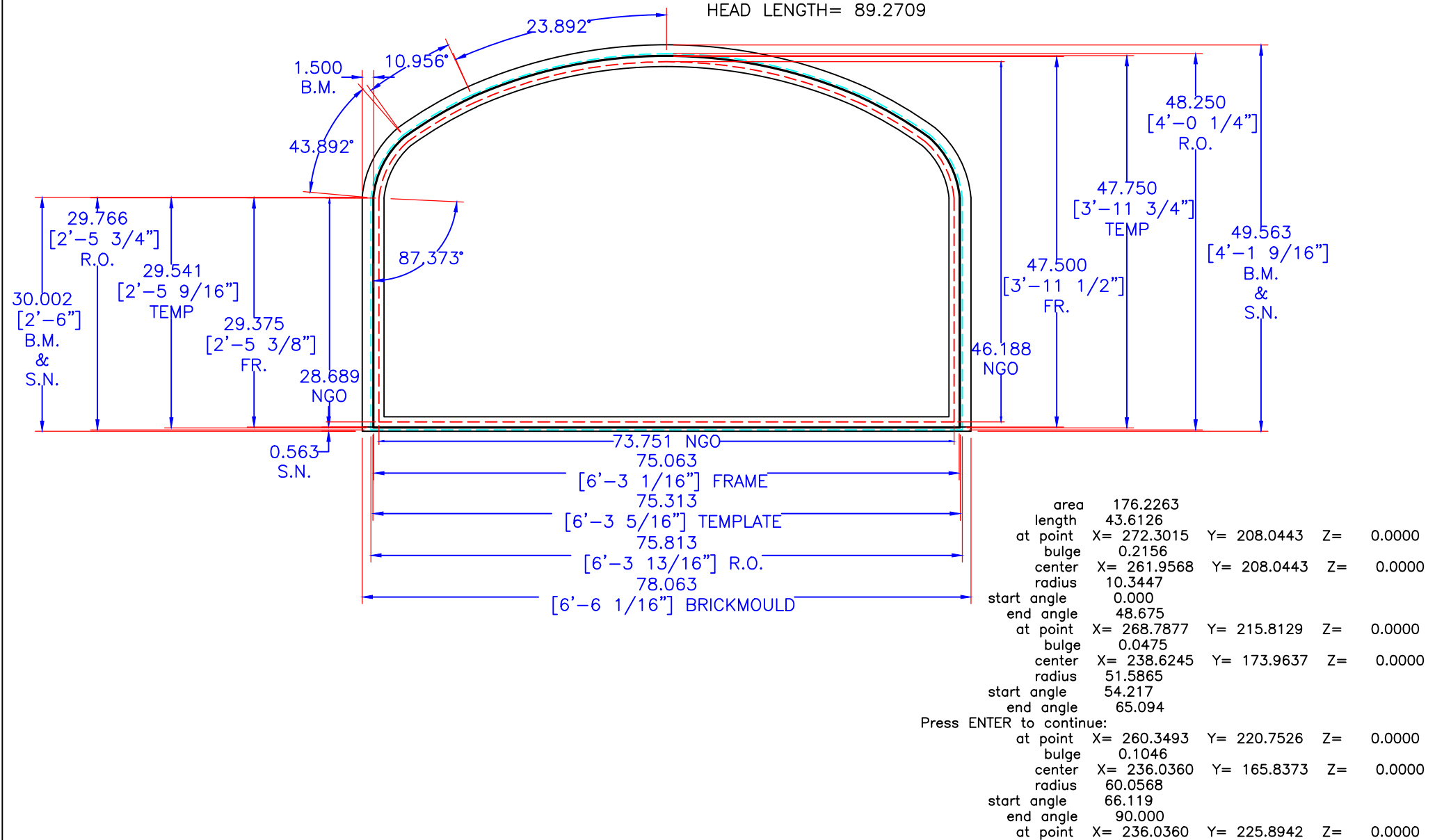
| | | | |
|-----------|---|------------|-------|
| LOCATION: | SIGNATURE INDICATES MY APPROVAL OF DESIGN AND DIMENSIONS AS SHOWN AND I AUTHORIZE PRODUCTION OF SAME. | SIGNATURE: | DATE: |
| SYMBOL: | | | |

| | | | | | | | | | |
|---|----------------------|--|------|--|----------------------|----------------------|--------|---|--|
| ALL VIEWS ARE FROM EXTERIOR UNLESS OTHERWISE NOTED. | | | | ORDER #: 980-2043 | | C-SL-42 5/1653 1/8-1 | |  | |
| | | | | ITEM#: | | | | | |
| | | | | CUST: Matt Lewinski | | | | | |
| | | | | DLR/TM: | | | | | |
| | | | | THIS DOCUMENT CONTAINS CONFIDENTIAL AND PROPRIETARY INFORMATION. DO NOT COPY OR DISCLOSE WITHOUT CONSENT OF SIERRA PACIFIC WINDOWS | | DRW BY: KD | 8/2/25 | QUANTITY | |
| | | | | | | CHK BY: | | PAGE 1 OF 1 | |
| # | REVISION DESCRIPTION | | DATE | BY | DRW NO.SP-511276-44A | | | |  A DIVISION OF |

LAST SAVED: Kemp/DeLay @ 8/5/2025 1:45:43 PM: LETTER

THIS DRAWING WAS MADE FROM SOLID CARDBOARD TEMPLATE

HEAD LENGTH= 89.2709



| | | | | | | | |
|---|--|---|--|--|--|----------------------------|--|
| LOCATION: | | SIGNATURE INDICATES MY APPROVAL OF DESIGN AND DIMENSIONS AS SHOWN AND I AUTHORIZE PRODUCTION OF SAME. | | SIGNATURE: | | DATE: | |
| SYMBOL: | | | | | | | |
| ALL VIEWS ARE FROM EXTERIOR UNLESS OTHERWISE NOTED. | | | | ORDER #: 980-2043 | | | |
| | | | | ITEM#: | | C-EL-75 1/1647 1/2-1 | |
| | | | | CUST: Matt Lewinski | | | |
| | | | | DLR/TM: | | DRW BY: KD 8/2/25 QUANTITY | |
| | | | | THIS DOCUMENT CONTAINS CONFIDENTIAL AND PROPRIETARY INFORMATION. DO NOT COPY OR DISCLOSE WITHOUT CONSENT OF SIERRA PACIFIC WINDOWS | | CHK BY: PAGE 1 OF 1 | |
| # | | | | REVISION DESCRIPTION | | DATE BY | |
| | | | | | | DRW NO.SP-511277-44A | |



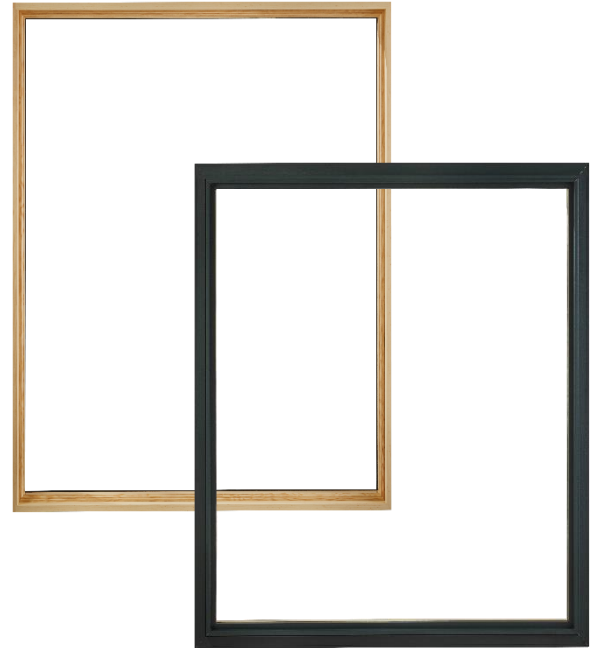
Clad Direct Glaze



Known for their straight lines, narrow profiles, and large sizes, Sierra Pacific's Direct Glaze windows in geometric or radius shapes will accentuate and amplify your design. And feel free to be creative with your design as we'll work with you to create your own custom shapes.

Standard Construction:

- 0.062" extruded aluminum cladding.
- Clad frame is extruded with integral nail fin and corners are sealed with silicone and foam pads and mechanically fastened.
- Standard 4-9/16" jamb depth. Minimum jamb depth of 3-1/2".
- Standard 3/4" overall glass thickness, glazed from the interior and secured with a removable glazing bead in a traditional and contemporary profile.
- Geometric and radius shapes.



MINIMUM / MAXIMUM FRAME SIZES

Additional sizes may be available upon request and approval.
Min/Max sizes listed **Do Not** apply to radius units. Please contact SPW for details.

DIRECT GLAZE

| | |
|----------------------|------------|
| Minimum Frame Width | 6" |
| Minimum Frame Height | 6" |
| Maximum Frame Width | 144" |
| Maximum Frame Height | 144" |
| Max. Frame Sq. Ft. | 60 Sq. Ft. |

Performance Data:



Direct Glaze: 96" x 75" (Single Unit Only)

AIR INFILTRATION.....0.01/0.01/Fixed
WATER.....NO LEAKAGE @ 6.06 PSF
STRUCTURAL.....CW-PG40 (+40/-40)



Direct Glaze: 60" x 120" (Single Unit Only)

AIR INFILTRATION.....0.01/0.01/Fixed
WATER.....NO LEAKAGE @ 6.06 PSF
STRUCTURAL.....CW-PG40 (+40/-40)



Direct Glaze: 72" x 60" (Single Unit Only)

AIR INFILTRATION.....0.01/0.01/Fixed
WATER.....NO LEAKAGE @ 8.35 PSF
STRUCTURAL.....CW-PG55 (+55/-55)

For a comprehensive list of tested and rated sizes and configurations, please refer to the Clad Direct Glaze Product Performance Guide (Structural) located in the Technical Resources Library on our website.

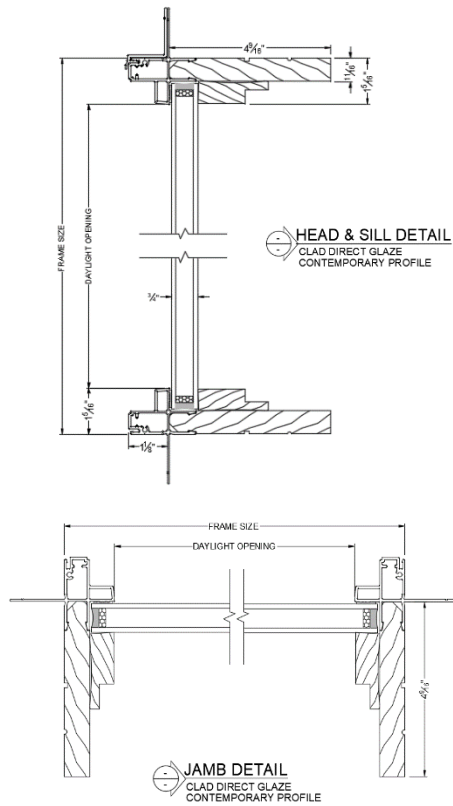
Thermal Performance (NFRC):

| Air Filled | | | Argon Filled | | |
|--------------------|-------------------|---------------------------|--------------------|-------------------|---------------------------|
| Low-E Clear | Low-E 366 | Triple IG LE/CL/CL | Low-E Clear | Low-E 366 | Triple IG LE/CL/CL |
| U-FACTOR.....0.32 | U-FACTOR.....0.31 | U-FACTOR.....0.24 | U-FACTOR.....0.28 | U-FACTOR.....0.27 | U-FACTOR.....0.21 |
| SHGC.....0.38 | SHGC.....0.25 | SHGC.....0.35 | SHGC.....0.37 | SHGC.....0.25 | SHGC.....0.35 |
| VT.....0.65 | VT.....0.59 | VT.....0.59 | VT.....0.65 | VT.....0.59 | VT.....0.59 |
| CR.....52 | CR.....52 | CR.....62 | CR.....55 | CR.....55 | CR.....64 |

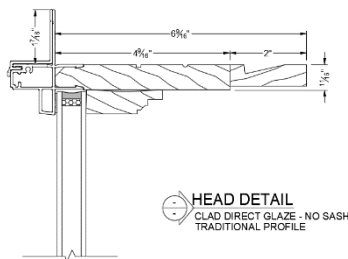
Values represent Direct Glaze units with insulated glass using standard black warm edge spacer. Additional glazing options available.

For a comprehensive list of glazing configurations, please refer to the Clad Direct Glaze Product Performance Guide (NFRC) located in the Technical Resources Library on our website.

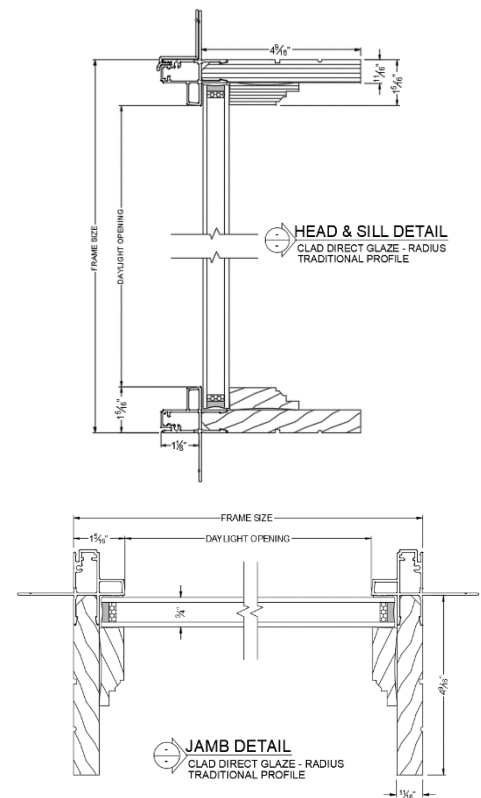
Direct Glaze - Contemporary 4-9/16" Jamb



Direct Glaze - Traditional 6-9/16" Jamb



Direct Glaze - Radius Traditional 4-9/16" Jamb



Additional product details may be found on our website www.sierrapacificwindows.com/ProfessionalResources/TechnicalLibrary



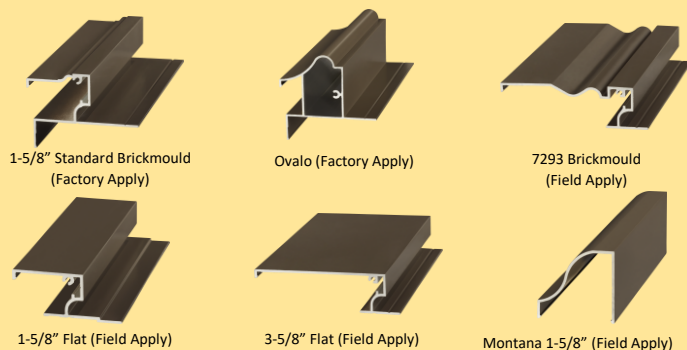
Common Direct Glaze shapes. Contact us for virtually limitless available options.

Clad Direct Glaze Additional Features

- Color Palette of 70 powder coated finishes in six design collections that meet AAMA 2605 and AAMA 2604 specifications.
- Extensive offering of performance glass available using black warm edge or Cardinal spacer for optimum efficiency.
- Simulated Divided Lites available in 5/8", 7/8" and 1" Putty; 5/8", 7/8", 1", 1-1/4" and 2" Traditional and Contemporary.
- Grilles-Between-Glass available in 5/8" and 1" flat.
- Factory side-by-side, stacking and pocket mulls. Structural support options available.

Please visit our website www.sierrapacificwindows.com for additional details or to contact your nearest Sierra Pacific Branch or Dealer location.

EXTERIOR TRIM OPTIONS



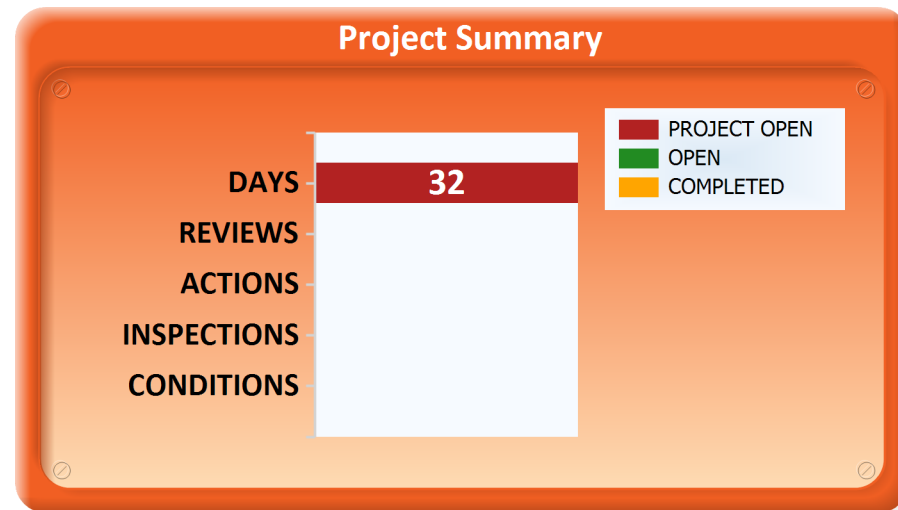


Project Details

Town of Erie

PROJECT NUMBER
HP2025-00003

| | |
|--|-------------------------------|
| Description: Alterations to the bell tower at Town Hall | Status: IN REVIEW |
| Type: HPAB | Status Date: 9/16/2025 |
| Subtype: CERTIFICATE OF APPROPRIATENESS | Applied: 9/16/2025 |
| Address: 645 HOLBROOK ST | Approved: |
| City, State, Zip: ERIE, CO 80516 | Closed: |
| Project Manager: Harry Brennan | Expired: |
| Details: | |



ADDITIONAL SITES

CHRONOLOGY

CONDITIONS

CONTACTS

| NAME TYPE | NAME | ADDRESS1 | CITY | STATE | ZIP | PHONE | FAX | EMAIL |
|-----------|----------------|-----------------|------|-------|-----------|-------|-----|-----------------------|
| APPLICANT | Chad Alexander | 645 Holbrook St | | | | | | calexander@erieco.gov |
| OWNER | ERIE TOWN OF | PO BOX 9 | ERIE | CO | 805160098 | | | |

FINANCIAL INFORMATION

INSPECTIONS

| INSPECTION TYPE | INSPECTOR | SCHEDULED DATE | COMPLETED DATE | RESULT | REMARKS | NOTES |
|-----------------|-----------|----------------|----------------|--------|---------|-------|
|-----------------|-----------|----------------|----------------|--------|---------|-------|

REVIEWS



Project Details

Town of Erie

PROJECT NUMBER
HP2025-00003

BOND INFORMATION

ATTACHMENTS

| Attachment Type | CREATED | OWNER | DESCRIPTION | PATHNAME | SUBDIR | ETRAKIT ENABLED |
|-----------------|------------|---------------|--|--|--------|-----------------|
| DOC | 9/16/2025 | Harry Brennan | Clad Direct Glaze Product Data Sheet ML.pdf | Clad Direct Glaze Product Data Sheet ML.pdf | | 0 |
| DOC | 9/16/2025 | Harry Brennan | erie dusk mullions.pdf | erie dusk mullions.pdf | | 0 |
| DOC | 9/16/2025 | Harry Brennan | SP-511276-44A.pdf | SP-511276-44A.pdf | | 0 |
| DOC | 9/16/2025 | Harry Brennan | SP-511277-44A.pdf | SP-511277-44A.pdf | | 0 |
| DOC | 10/3/2025 | Harry Brennan | Project Narrative_Town Hall Bell Tower_Updated.pdf | Project Narrative_Town Hall Bell Tower_Updated.pdf | | 1 |
| DOC | 10/17/2025 | Harry Brennan | Project Details | Project Details.pdf | | 0 |