



Transportation & Mobility Plan

Town Council

Miguel Aguilar, Senior Transportation Planner

John Firouzi, Transportation & Mobility Manager

November 12, 2024



Agenda

- What We Heard
- Chapters of Plan
- Appendices
- Next Steps

Transportation & Mobility Plan Update



Public
Outreach



Public
Outreach



Public
Outreach



Plan
Adoption



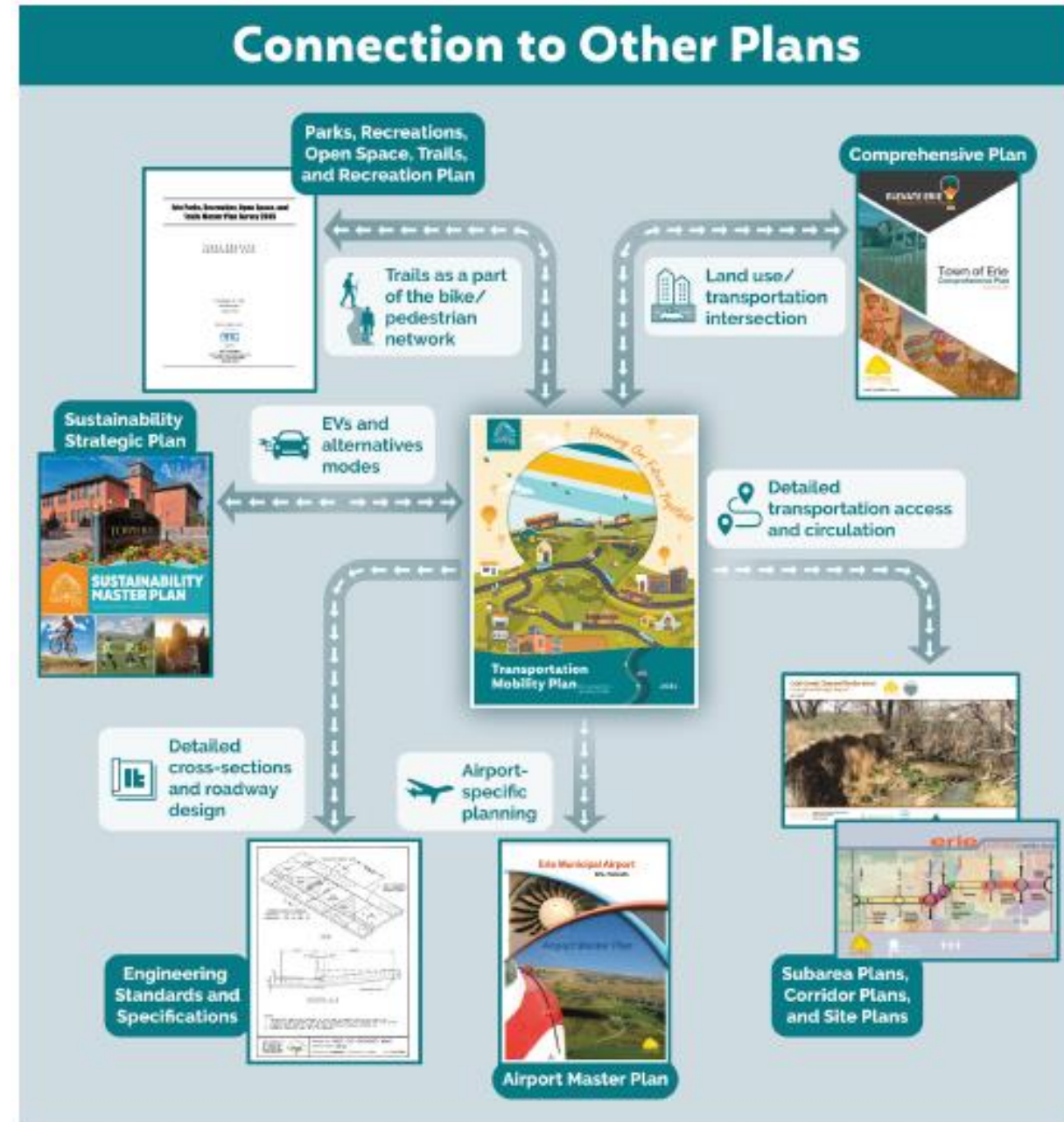
What we heard

- Address safety within the vision statement
- DRCOG model high level
- RTD N Line connection
- RTD ROW opportunities
- JUMP Ridership
- Bike/ped Level of Stress maps updated
- Project numbers associated with improvements
- All maps updated



Updates

Connection to Other Town Plans



Updates

Vision Statement

Traveling around Erie is easy for everyone to get wherever they need to go on an inviting transportation network.



Traveling

Using any transportation mode.



Easy

The transportation network (for example, sidewalks for personal movement, bike lanes for bicycling, trails for recreation, buses for transit riders, etc.) is connected, safe, and efficient to move around on.



Everyone

People of all ages, demographics, and abilities can move around Erie.



Wherever

Key destinations including work, school, home, and recreation.



Transportation Network

The infrastructure and services used by any mode of transportation—walking, mobility device, biking, transit, or driving.



Inviting

The infrastructure is safe and well maintained for all users and modes.



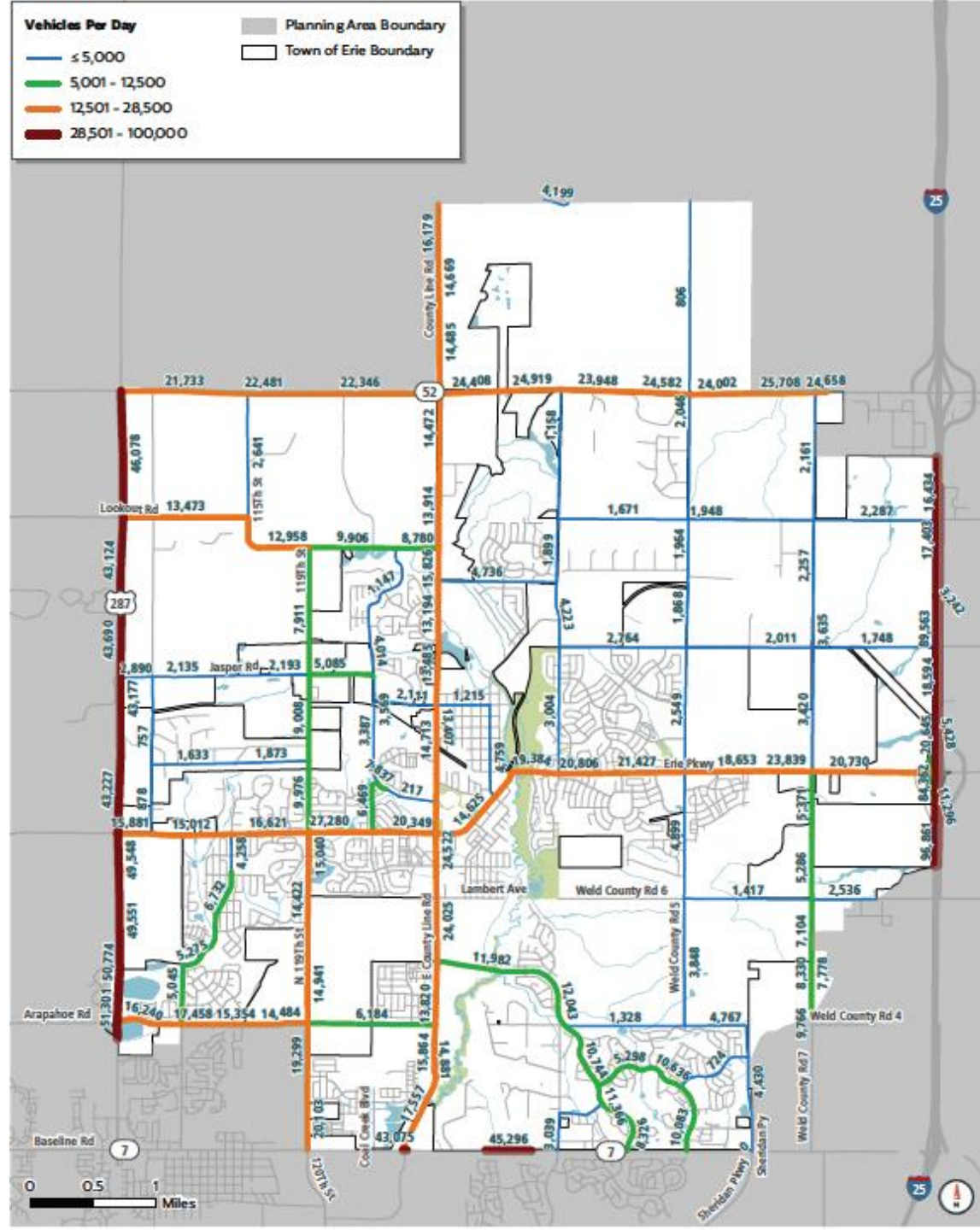
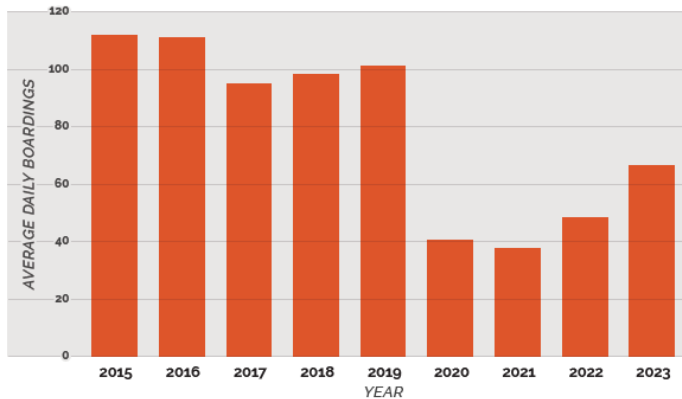
Updates

DRCOG Model

- 2050 Traffic Volumes

RTD JUMP Route

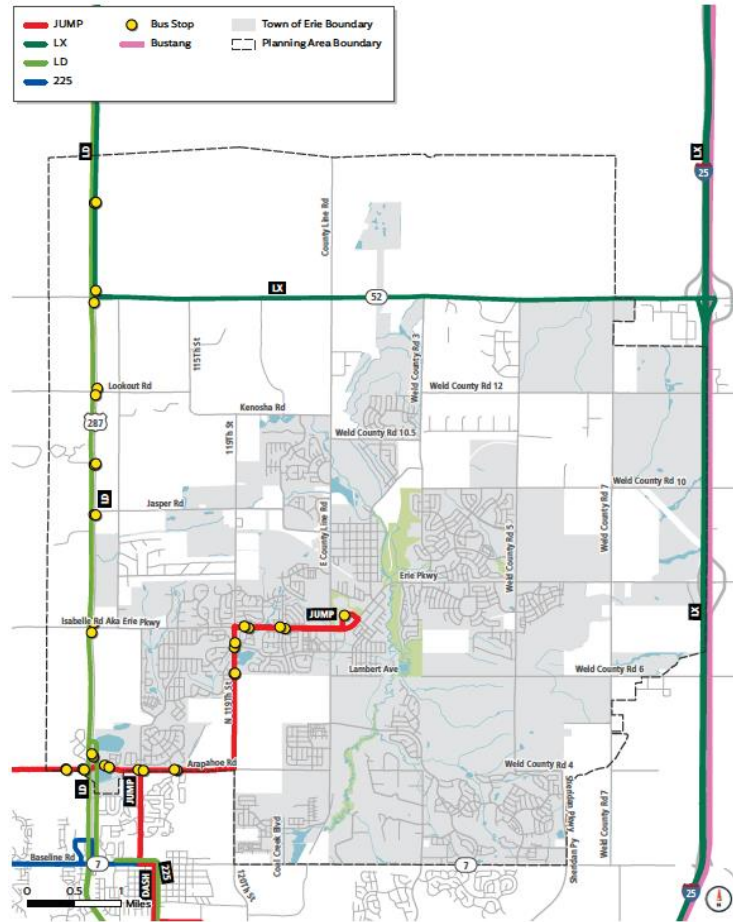
- Boardings



Updates

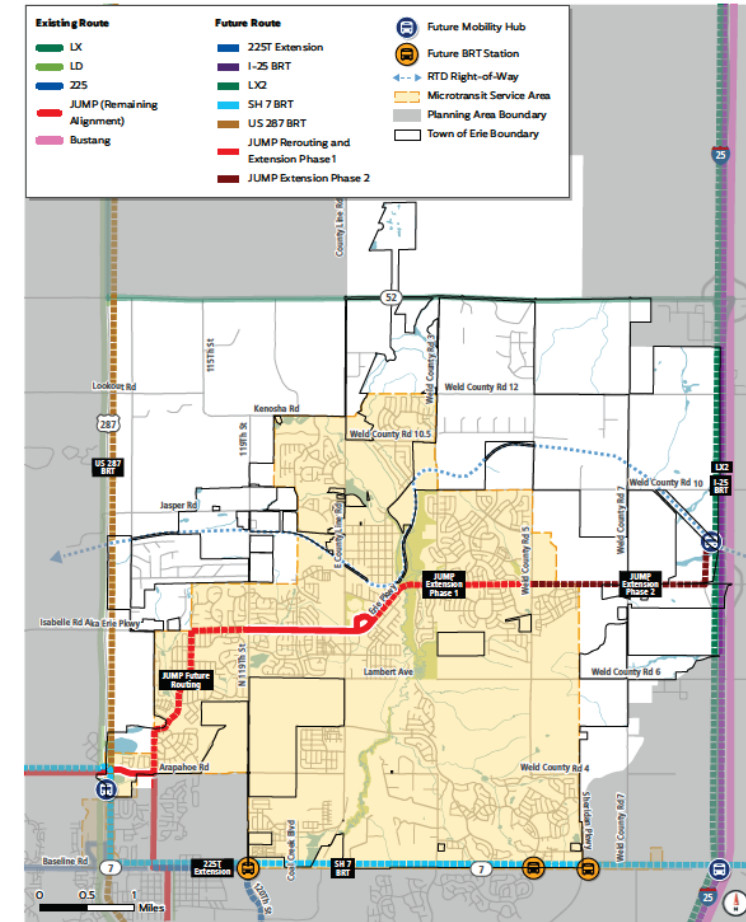
Existing Transit Services

Figure 9. Existing Transit Services



Future Transit Services

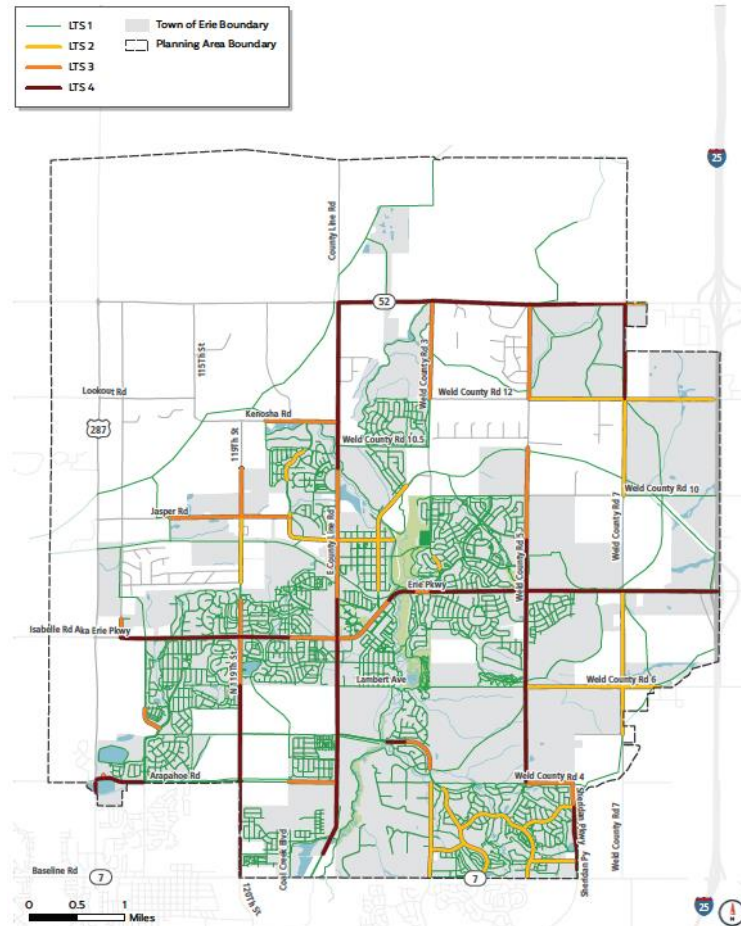
Figure 23. Future Transit Network



Updates

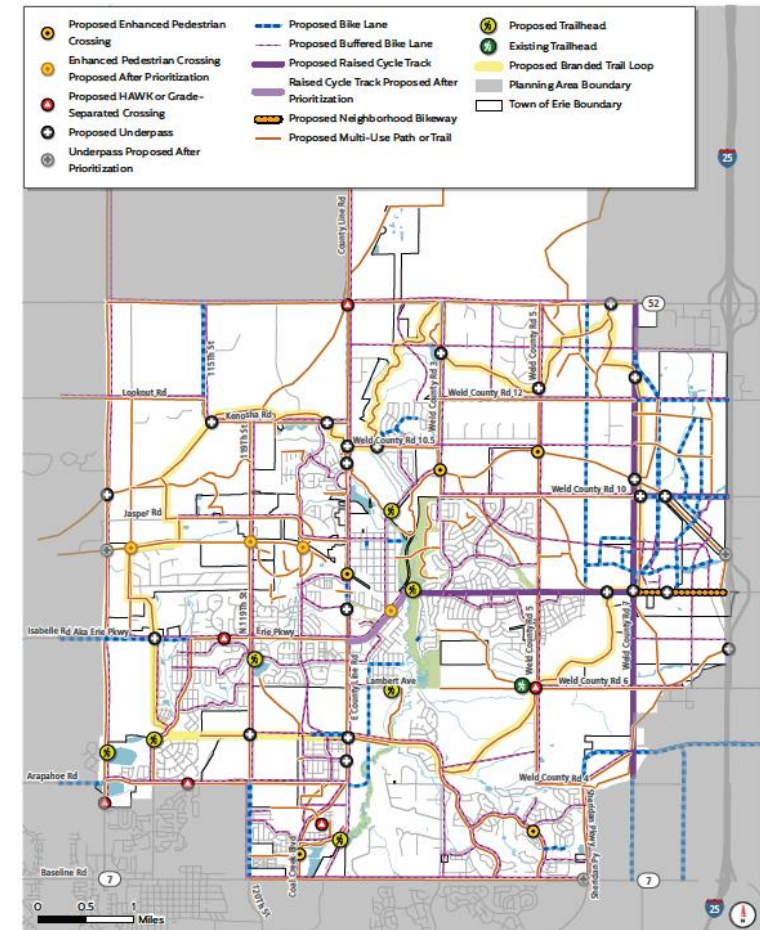
Bicycle Level of Stress

Figure 7. Existing Bicycle Level of Traffic Stress



Proposed Bike Facilities

Figure 20. Proposed Bike Facilities

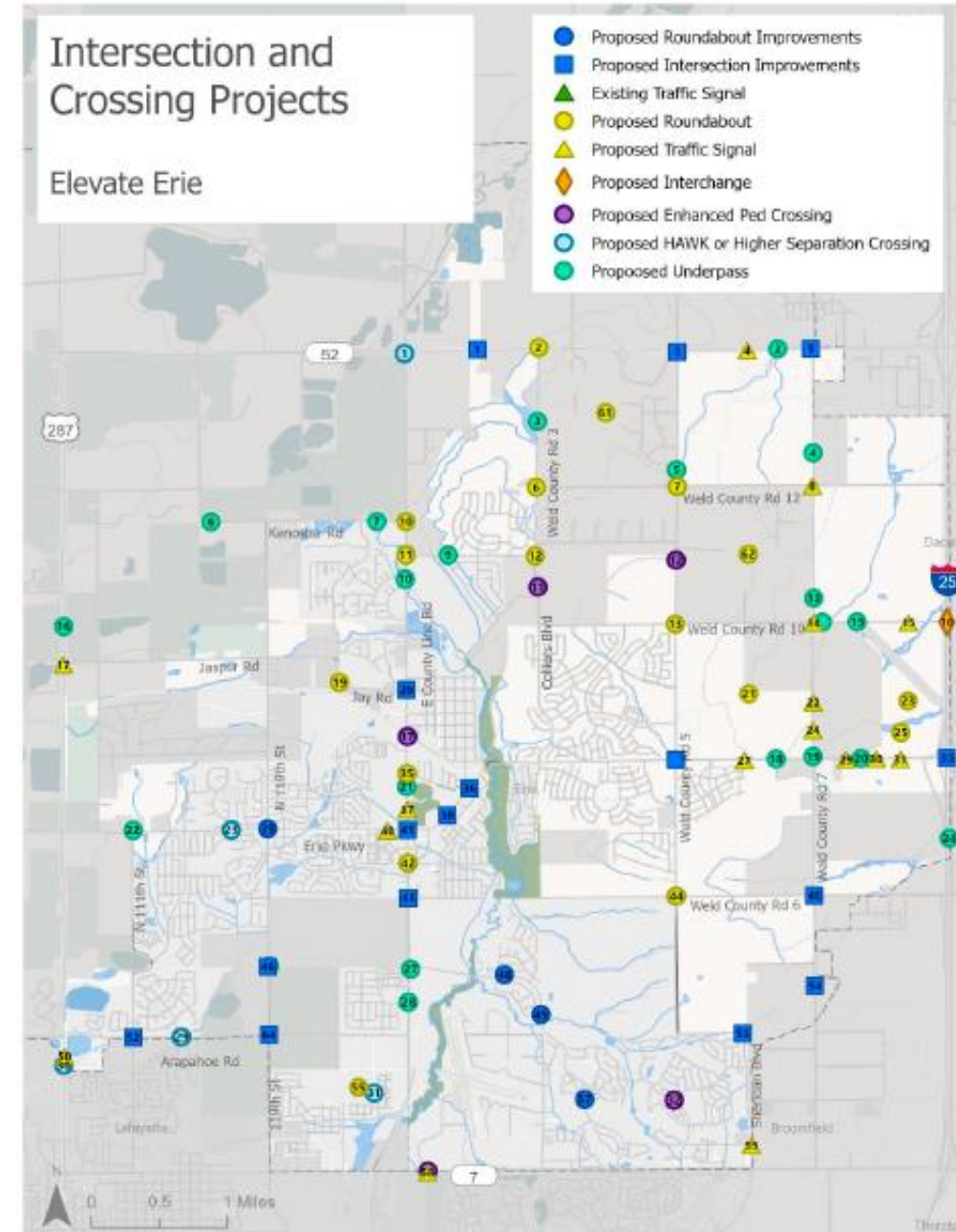


Updates

Project ID Identifier

Table 1: Intersection and Crossing Projects Table

Project ID	Category	Roadway	Intersection	Description
17	Enhanced Crossing	WCR 3	WCR 3 & WCR 1 1/2	Enhanced Ped Crossing
29	Enhanced Crossing	WCR 5	WCR 5 & WCR 6	Grade Separated Crossing
32	Enhanced Crossing	N 107th St	N 107th St & new roadway	Grade Separated Crossing
41	Intersection Project	Erie Pkwy	Erie Pkwy & County Line Rd	Safety Improvements
33	Enhanced Crossing	SH 7	SH 7 & Airport Dr	Enhanced Ped Crossing
42	Intersection Project	E County Line Rd	E County Line Rd & Austin Ave	Roundabout
52	Intersection Project	Arapahoe Rd	Arapahoe Rd & N 111th St	Intersection Improvements
11	Enhanced Crossing	WCR 5	WCR 5 & new roadway	Enhanced Ped Crossing
12	Enhanced Crossing	Erie Pkwy	Erie Pkwy & new roadway	Underpass
20	Intersection Project	E County Line Rd	E County Line Rd & Jay Rd	Intersection Improvements
36	Intersection Project	Erie Pkwy	Erie Pkwy & Briggs St	Safety Improvements
38	Intersection Project	Erie Pkwy	Erie Pkwy & Powers St	Intersection Improvements
39	Intersection Project	Erie Pkwy	Erie Pkwy & N 119th St	Roundabout Improvements
1	Enhanced Crossing	new roadway	new roadway & new roadway	Grade Separated Crossing
6	Enhanced Crossing	Kenosha Rd	Kenosha Rd & new roadway	Underpass
10	Enhanced Crossing	County Line Rd	County Line Rd & new roadway	Underpass
21	Enhanced Crossing	County Line Rd	County Line Rd & new roadway	Underpass
23	Enhanced Crossing	County Line Rd	County Line Rd & Union Pacific Railroad	Enhanced Ped Crossing
25	Enhanced Crossing	Erie Pkwy	Erie Pkwy & Meadow View Pkwy	HAWK or Higher Separation Crossing
30	Enhanced Crossing	County Line Rd	County Line Rd & Mineral Rd	Grade Separated Crossing





Executive Summary

- Why a transportation plan?
- Planning to 2050
- Vision
- Development of plan
- Analysis & Projects



Why a Transportation Plan?

A Transportation Plan serves as a guiding document for decision makers and provides a pathway for funding transportation improvements in Erie.

This Transportation & Mobility Plan (TMP) provides a guide for Erie between now and 2050.

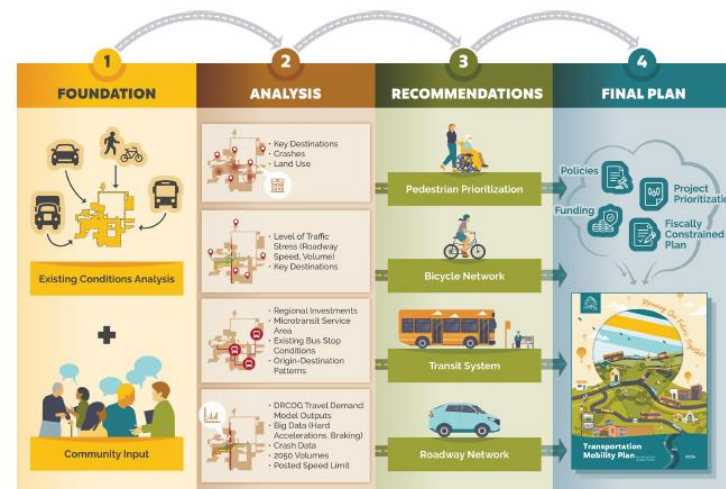
The TMP identifies a comprehensive and fiscally constrained prioritized project list, organized by short (2027-2031), medium (2032-2040), and long-term (2041-2050) projects, which provides a clear roadmap for implementation. Each project moves the Town towards its vision of improving safety and multimodal travel and reinforces its values,

as identified by the community and stakeholders through the TMP planning process. Because these proposed projects are formally documented in the TMP, they are eligible and more competitive for local, state, and federal funding. This document also provides a set of policies (**Chapter 2**) to address the multimodal transportation challenges today.



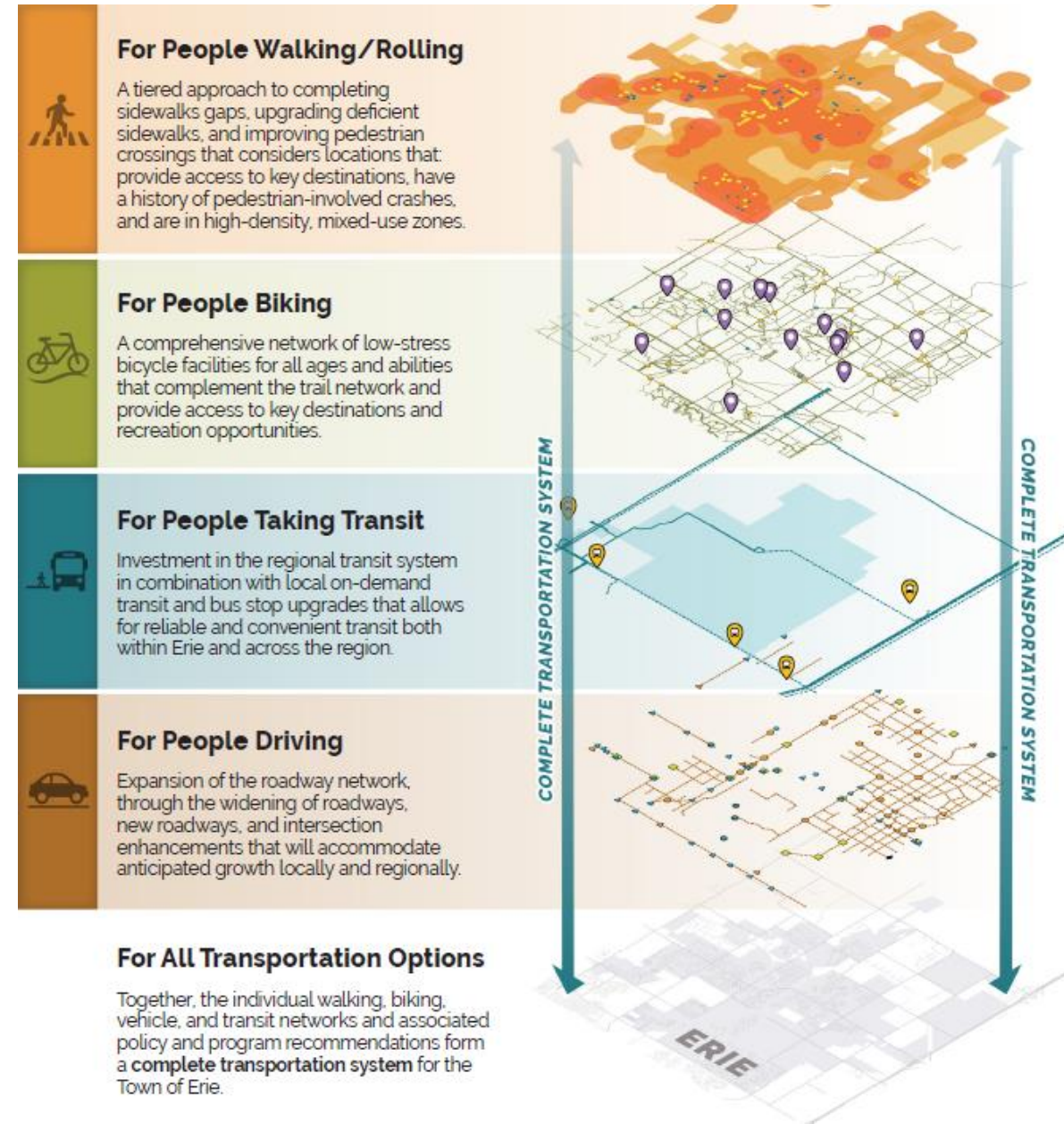
TMP Chapters

- Ch. 1 – Foundation
- Ch. 2 – Vision, Key Principles, Core Values, and Policies
- Ch. 3 – Community Engagement
- Ch. 4 – Existing Conditions Summary



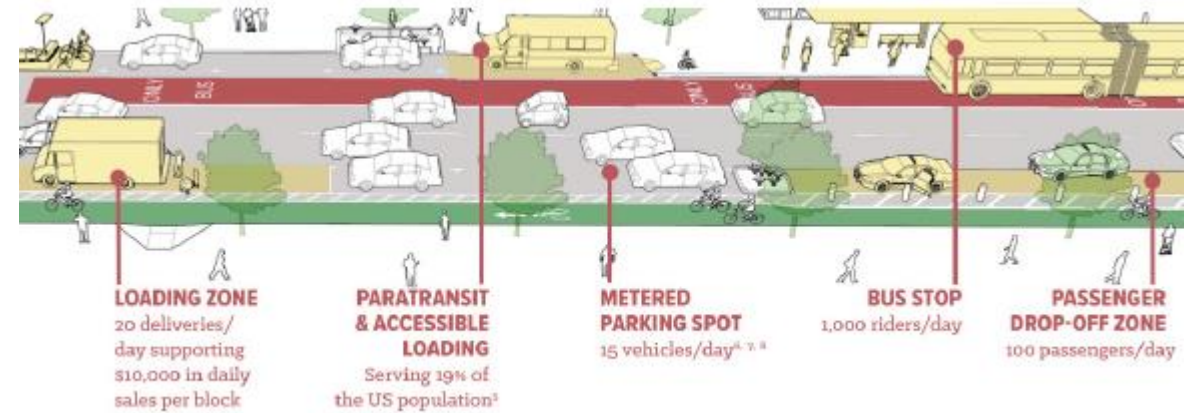
TMP Chapters

- Ch. 5 – Pedestrian Network
- Ch. 6 – Bicycle Network
- Ch. 7 – Transit Network
- Ch. 8 – Roadway Network



TMP Chapters

- Ch. 9 – Programs
- Ch. 10 – Emerging Mobility
- Ch. 11 – Implementation



Program	Multimodal Options	Connectivity	Equity	Safety and Comfort	Innovation	Mitigation, Adaptation, and Resiliency	Economic Development & Vitality
Transportation Demand Management	*		*	*			*
Maintenance	*	*		*			
Bicycle/Pedestrian Amenities	*	*		*			*
Access Management/Connectivity	*	*		*			*
Emergency Planning		*	*			*	
Parking	*						*
Trail and Micromobility Policy	*	*		*	*	*	
Freight		*		*	*		*
Additional Programs, Plans, Guidelines	*	*	*	*	*	*	*

Plan Component	Percent of Distribution	Funding		
		2027-2031	2032-2040	2041-2050
Pedestrian corridor improvements	13%	\$15,845,482	\$37,841,459	\$104,721,811
Bicycle corridor improvements	13%	\$15,845,482	\$37,841,459	\$104,721,811
Transit improvements	5%	\$6,094,416	\$14,554,407	\$40,277,620
Roadway corridor improvements	58%	\$70,695,226	\$168,831,126	\$467,220,387
Multimodal intersection improvements	10%	\$12,188,832	\$29,108,815	\$80,555,239
Program analysis	1%	\$1,218,883	\$2,910,881	\$8,055,524
Total	100%	\$121,888,322	\$291,088,147	\$805,552,391



Appendices

- Glossary of Terms
- Community Engagement Summary
- Existing Conditions
- Bicycle Crossing Guidance
- Erie Microtransit Report
- Project Maps & IDs
- Unfunded Projects



Next Steps

- Adoption (December)
-

- Track Performance
- Minor updates 3-5 years, major update 5-10 years
- Spur Off Other Plans



Questions & Discussion