

SUMMERFIELD

PRELIMINARY PLAT NO. 2

TOWN OF ERIE TOWN COUNCIL

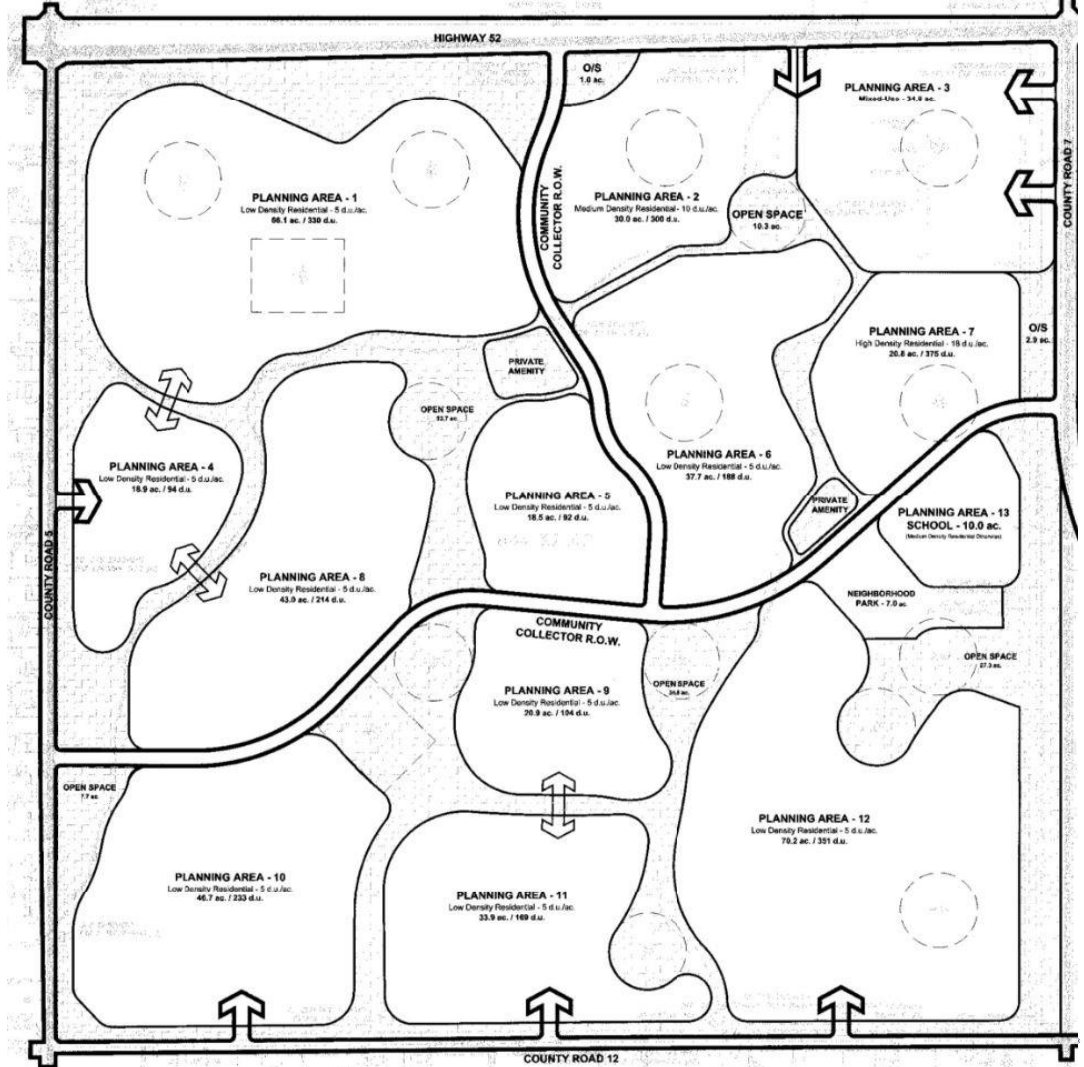
TL SUMMERFIELD, LLC
MARCH 11, 2025

Toll Brothers[®]

ANNEXATION AND PD

MARCH 2013

- 2,200 Dwelling Units
- 12 Planning Areas
- Product Diversity
 - Lot Standards/Setbacks
 - Low Density/Medium Density/High Density
 - Age targeted
- Mixed-use commercial area
- 2 Neighborhood Parks
- 8 Pocket Parks
- Open Space/Trails
- Street Standards



WHAT HAS BEEN APPROVED TO DATE

March 2013: Annexation and PD

September 2020 - May 2022: Preliminary Plat 1

May 2022 – July 2023: Final Plat 1, Construction Documents, DA

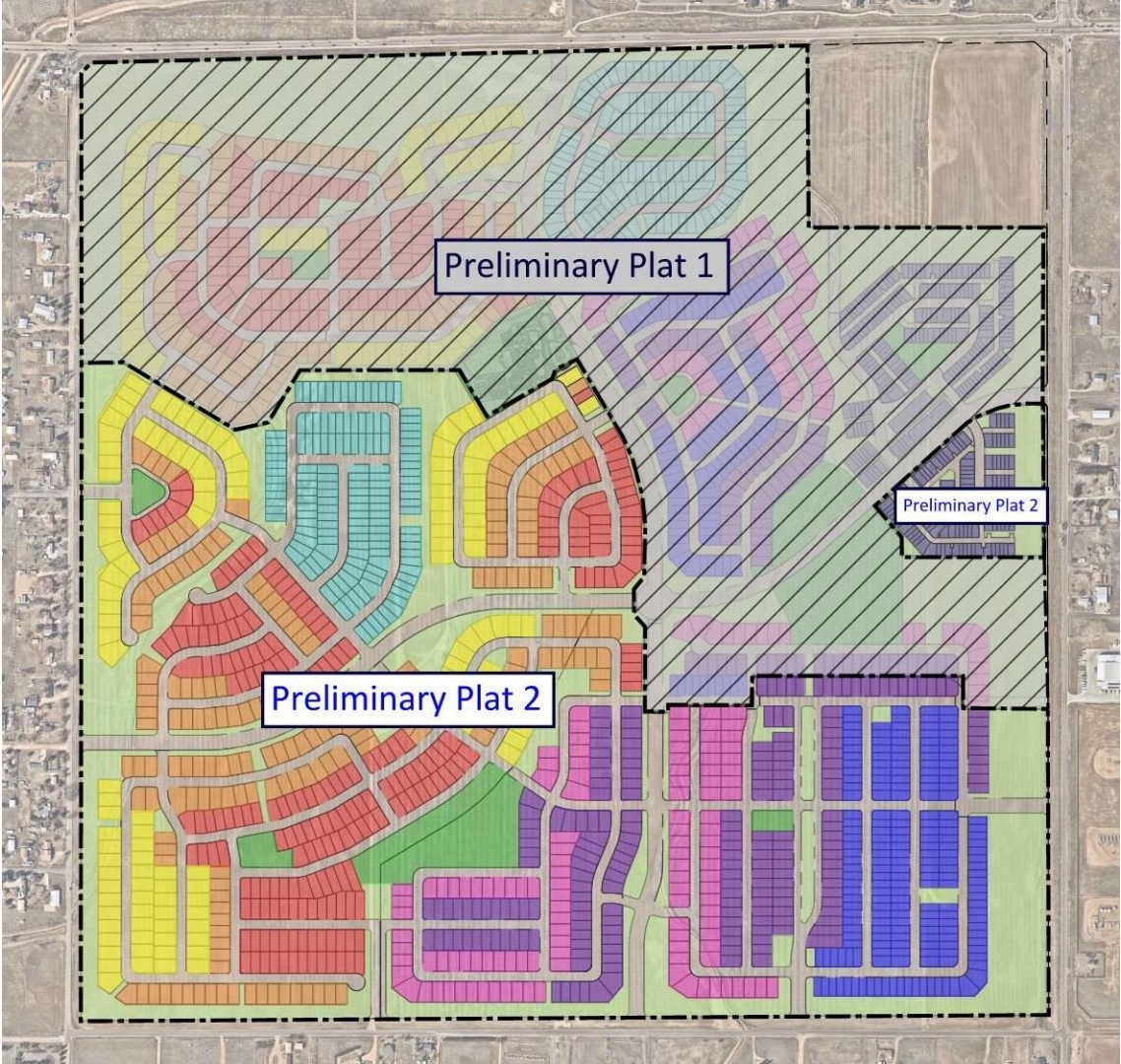
- Start of Construction

December 2022 – Present: Preliminary Plat 2

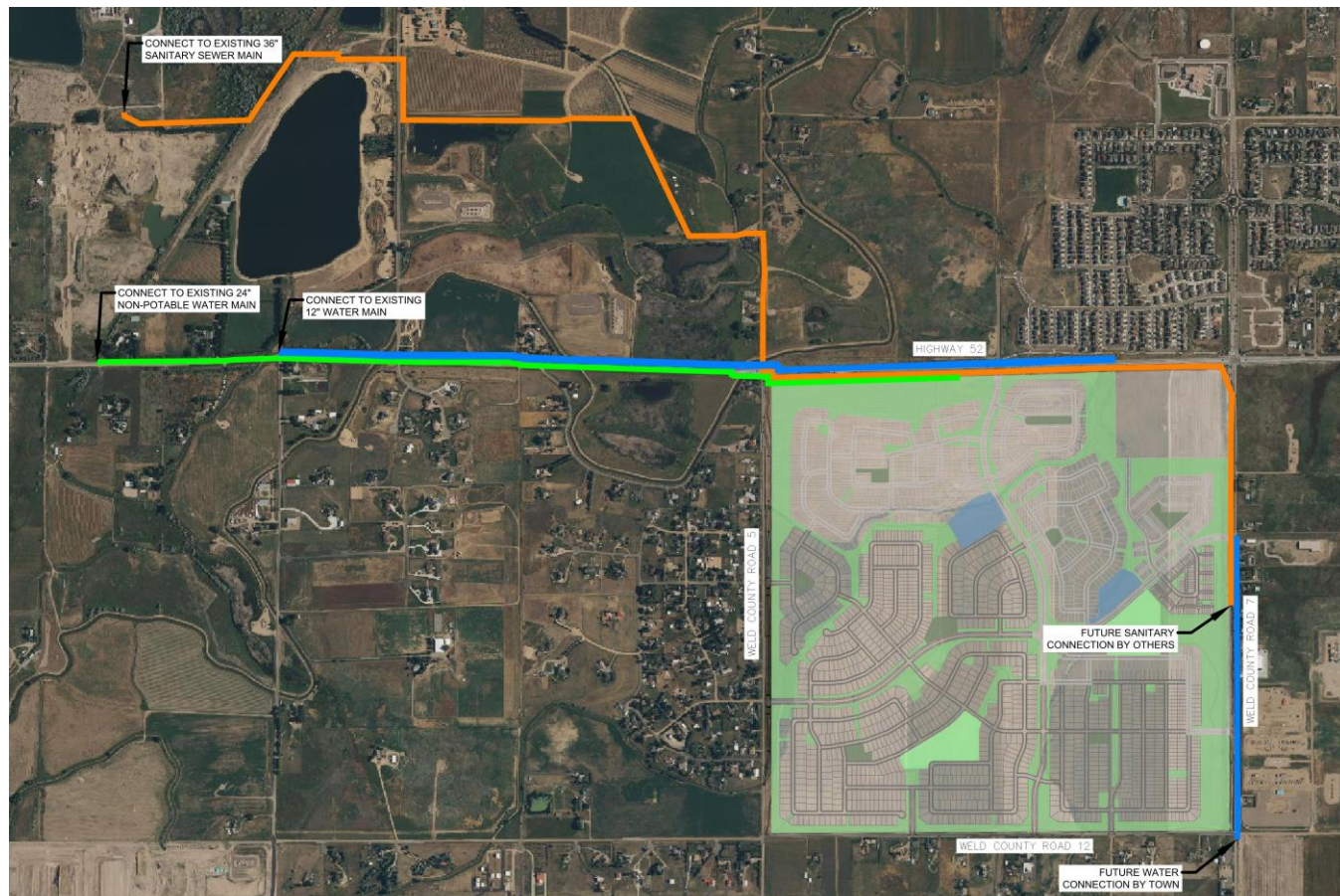
- Neighborhood Meeting Held November 11, 2024

PRELIMINARY PLAT 2

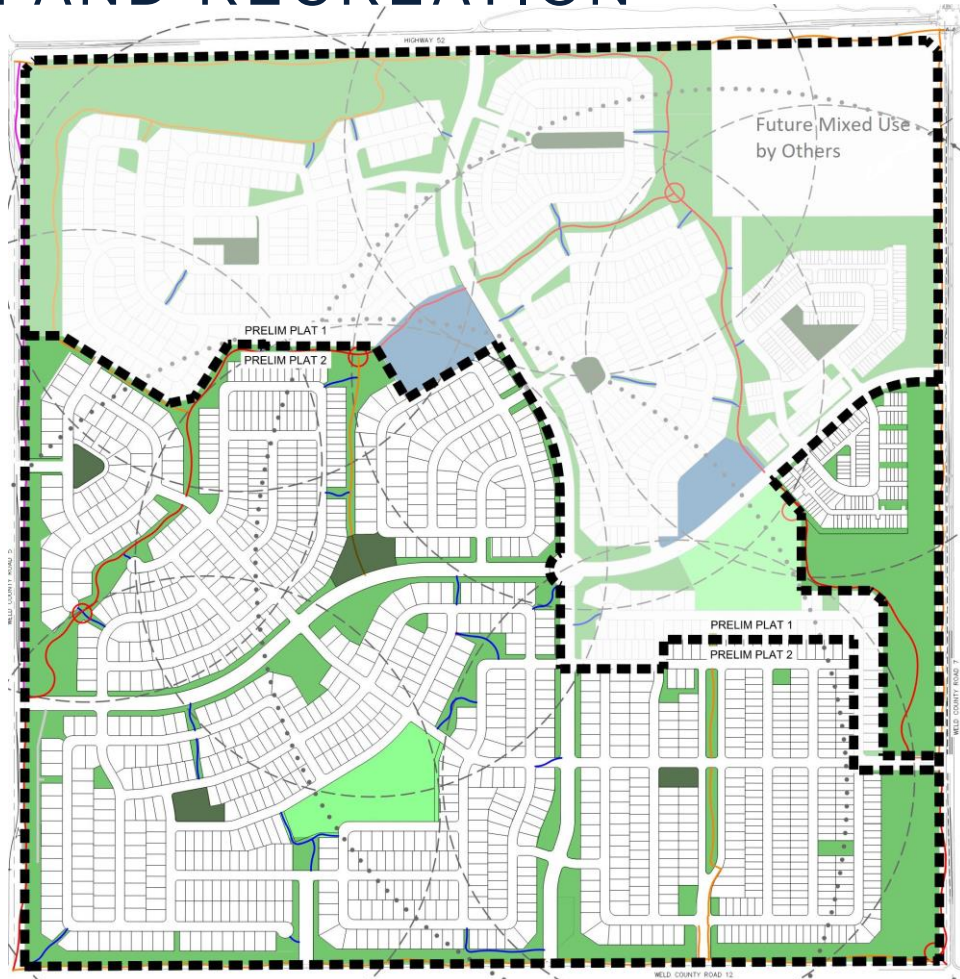
PD	Proposed
2,200 Lots	2,141 Lots
8 Pocket Parks 2 Neighborhood Parks	8 Pocket Parks 2 Neighborhood Parks
27 % Open Space	27% Open Space
Low, Medium, and High Density	Eight Home Series
County Roads/ Highway Improvements	5,7,+52 Improved



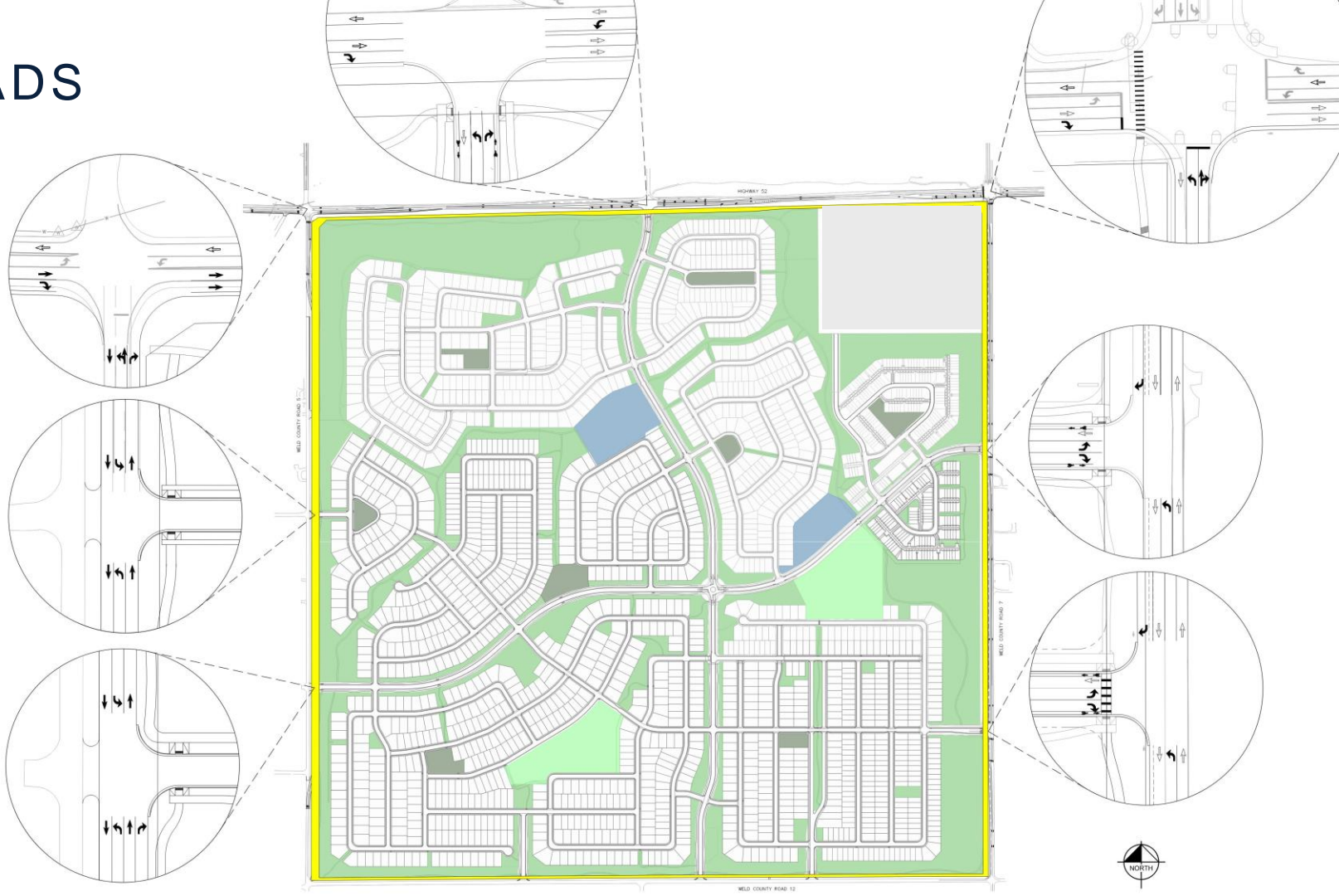
REGIONAL CONTEXT - UTILITIES



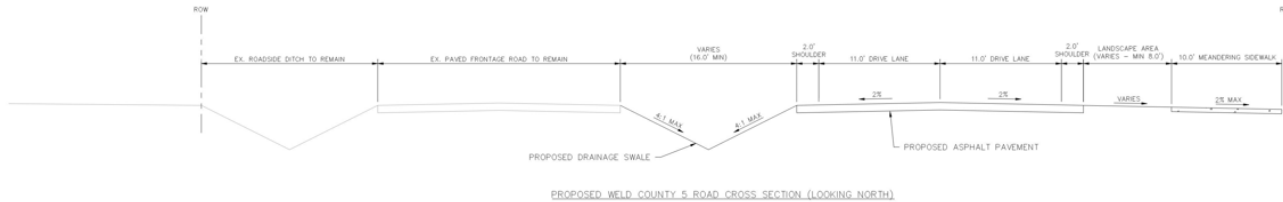
OPEN SPACE AND RECREATION



ROADS



WCR-5



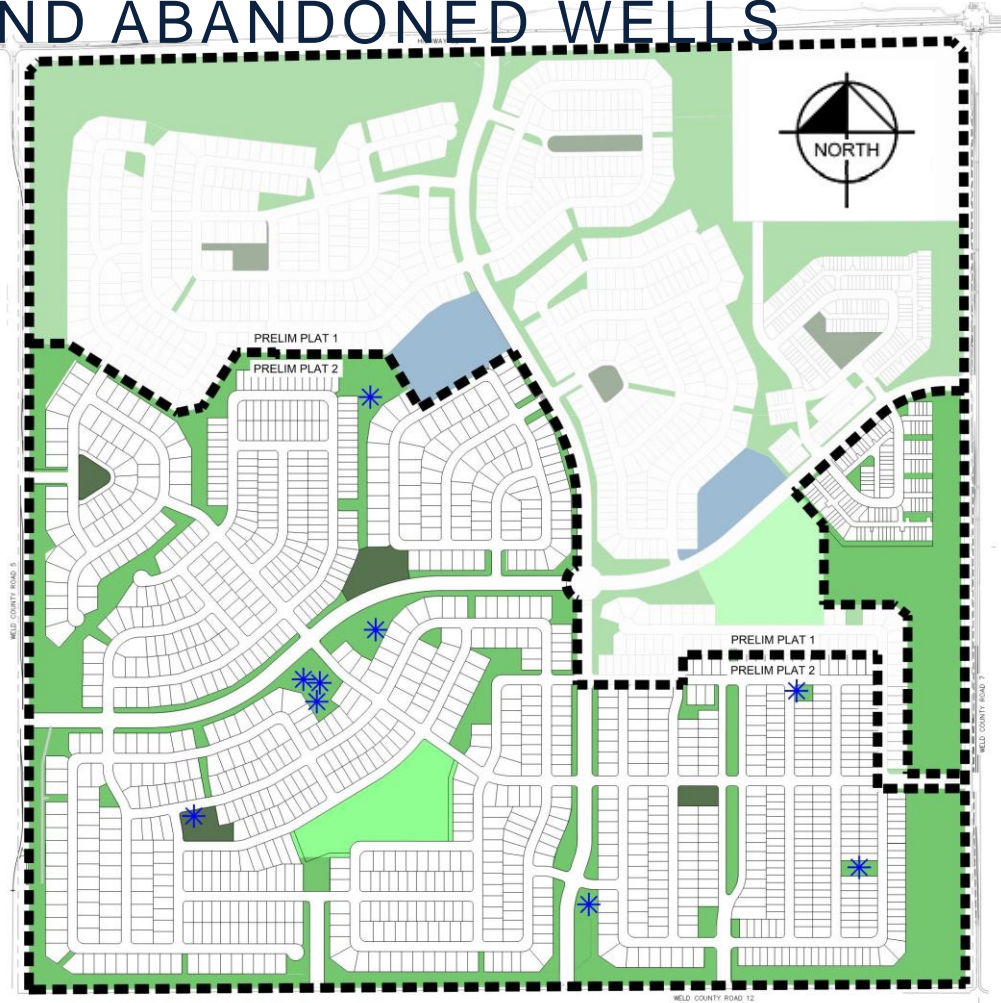
SOUTH SECTION



NORTH SECTION



PLUGGED AND ABANDONED WELLS



SCENES FROM THE PROJECT



SCENES FROM THE PROJECT





THANK YOU

Any questions?