



**AIRPORT MANAGER'S REPORT
NOVEMBER 9, 2021 MEETING**



ERIE MUNICIPAL AIRPORT



AIRPORT FEES

THROUGH THE FENCE FEES

2021 Through the Fence Fees were invoiced and have been collected

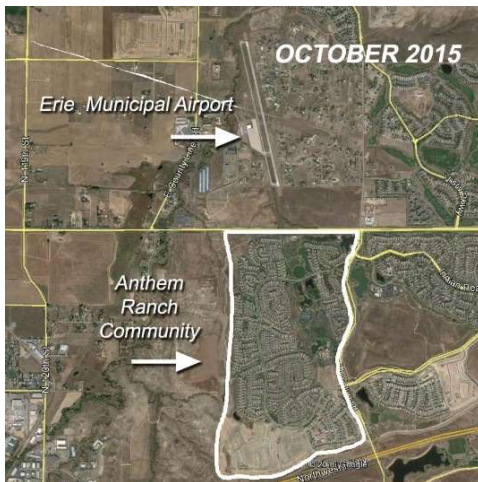


LAND LEASE AND TIE DOWNS

At the time of this report, Airport staff has invoiced and collected current tie-down and land lease fees.

AVIATION CONCERNS

Airport Staff has received some concerns from residents in surrounding communities and Airport Manager, Jason Hurd, has reached out to and spoken to those concerned residents.



MEETING WITH ANTHEM RANCH AVIATION COMMITTEE

Airport Manager Jason Hurd, met with two members of the Anthem Ranch Aviation Committee to continue the discussion of various concerns that Anthem Ranch residents have brought before the Aviation Committee.

Anthem Ranch is a Broomfield Community located directly south of the Erie Municipal Airport off the departure end of Runway 16 and the approach end of Runway 34.

Jason Hurd has, in the past, hosted Community Meetings at Anthem Ranch with the latest being held virtually in August of 2020. These Community Meetings with Anthem Ranch have always been popular with Anthem Ranch residents. The plan in the future is to continue these Community Meetings to discuss concerns that may arise.



AIRPORT INSPECTIONS

Airport staff performed daily and weekly inspections of the airport. These inspections include but may not be limited to:

- Ensure all NOTAMs are current
- Check for FOD (foreign object debris). Remove as needed
- Inspect condition of the runway surface, and markings
- Inspect condition of the taxiway and connector surfaces and markings and perform routine maintenance as needed
- Inspect performance of runway and taxiway lighting and signs and perform routine maintenance as needed
- Inspect performance of navigational lighting performing routine maintenance as needed
- Inspect condition of the ramp areas
- Ensure tied down aircraft are secure
- Inspect all airport equipment and vehicles and perform routine maintenance as needed.
- Inspect all airport wind socks for wear. Replace as needed
- Inspect segmented circle. Perform maintenance as needed





FUEL ISLAND INSPECTIONS

Airport staff continues to perform daily, weekly and monthly inspections of the fuel island. These inspections include but may not be limited to:

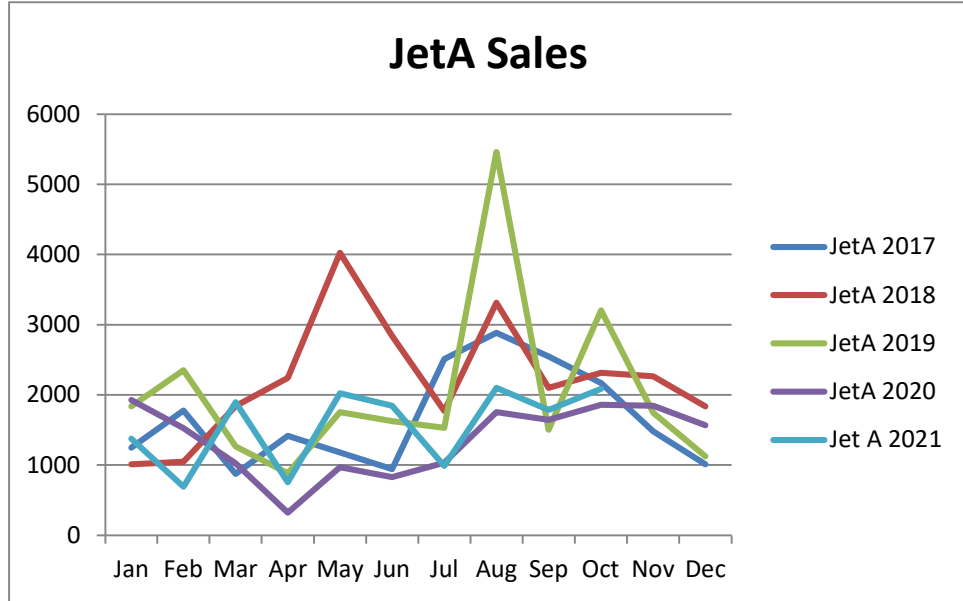
- Physical inspection of tank exteriors, including fitting, valves, connections, etc., for leaks
- Verify security of ladders
- Inspect tanks opening to ensure proper seal
- Inspect overfill prevention equipment and spill bucket
- Inspect tanks for contamination by water
- Inspect the area around the tanks for signs of leakage
- Verify fuel levels and alert Airport Management if fuel needs to be purchased
- Sump fuel tanks to check for contamination





FUEL SALES – JETA

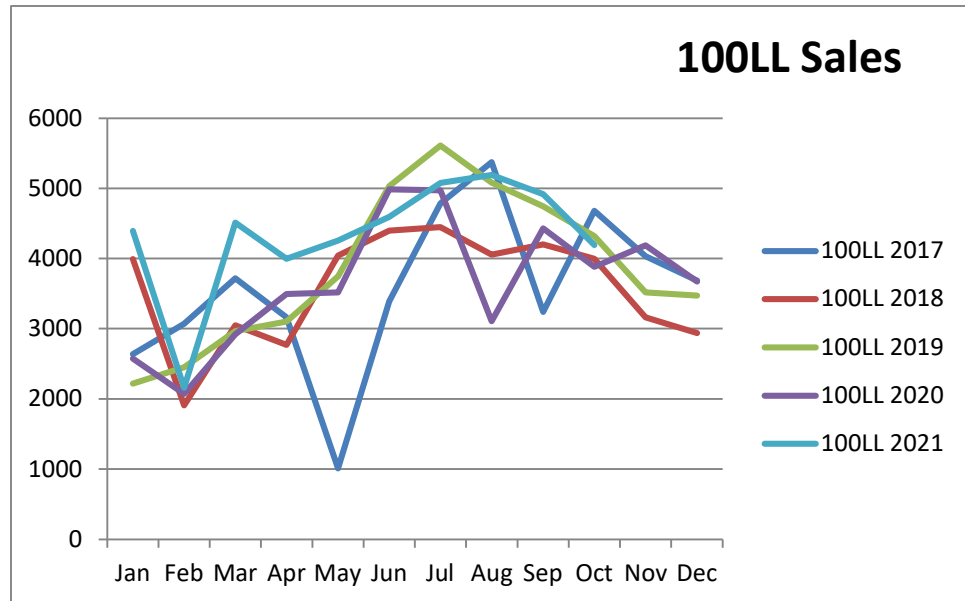
Month	JetA
Jan	1376
Feb	694
Mar	1893
Apr	752
May	2023
Jun	1843
Jul	985
Aug	2102
Sep	1786
Oct	2086*
Nov	
Dec	



*to date

FUEL SALES – 100LL

Month	100LL
Jan	4394
Feb	2161
Mar	4511
Apr	3996
May	4258
Jun	4595
Jul	5076
Aug	5192
Sep	4918
Oct	4192*
Nov	
Dec	



*to date