

Public Works Report

December 2021

Front Range and Denver Regional Landfill Updates

Waste Connections has notified the Town of Erie that Denver Regional Landfill's (DRL) final cover is complete. The landfill is located south of County Road 6 and west of County Road 5. The final closure certification report has been submitted to Colorado Department of Health and Environment (CDPHE) and is under certification review.

The southernmost slope at Front Range Landfill (FRL), along County Road 4, has been completed to its highest elevation and is seeded.



As you know, we approved a temporary 60-day waiver for the FRL to take potential asbestos waste, specifically related to the Marshall Fire event. No loads have arrived yet, as they are being categorized at the scene of the disaster. Only pre-approved haulers may transport this debris, with specific handling requirements. Once the operation begins at FRL, I will tour the operation with CDPHE. We will also maintain periodic site visits.

Capital Improvement Projects

Lynn R Morgan Water Treatment Facility (WTF) Expansion & Hydroturbine

This project is essentially complete, vibration issues with the single speed generator have been resolved, and we have come to agreement with the manufacturer to supply a two-speed generator due to fluctuating incoming pressure. Fabrication of this equipment is several months out.

North Water Reclamation Facility (NWRf) Expansion

Construction of this \$30+ Million project continues, on budget and within schedule. This project will continue into 2023.

Sustainability and Water Conservation

Air Quality

- Stand-alone air purifiers and radon mitigation systems are now rebated through the Sustainability Division. To find out more, please visit the [Radon Information webpage](#).

Energy

- The Energy Action Plan Implementation has begun with an Old Town Renewable Energy subscription campaign being built out.
- The Net Zero Roadmap for new construction along with 2021 ICC adoption regional cohort has launched.

Transportation

- Electric vehicle charging stations have offset 2,812 kg of greenhouse gas emissions in their first 6 months of activation. This equates to 72 trees planted and reducing GHG emissions for 10 years.
- Installation of two more publicly available charging stations has been completed at the Erie Community Park final phase and will be available to use as soon as the parking lot is open.

Waste, Recycling, & Composting

- December marked the highest usage of the Recycling Center in one month with over 1,100 users. Year-round yard waste is now accepted and construction for relocation and addition of a new cardboard compactor is underway.
- The leaf and pumpkin composting events had over 1,000 visits and 94.1 tons of composting diverted from the landfill. Christmas tree composting was a success and partnerships with local Boy Scout troops resulted in the most trees composted yet in Erie.
- A town-wide universal Zero Waste Ordinance as well as a policy to insure Town meetings and permitted Special Events are zero waste is being developed for adoption in 2022.

Water Efficiency

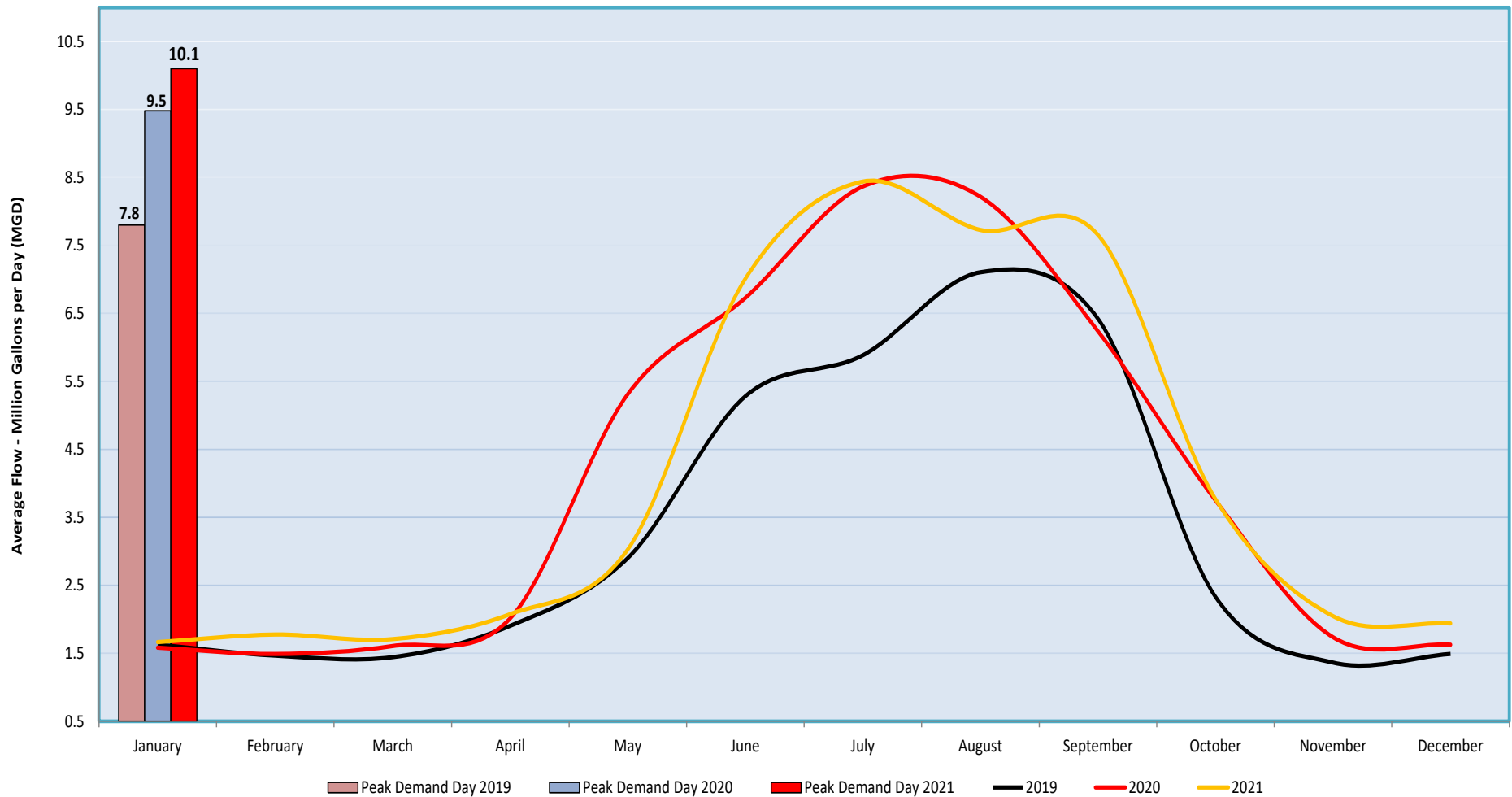
- EyeOnWater signups and monitoring continues to rise and we are now at 29% and counting. We began 2021 with only 16% of residents signed up.
- 2022 outdoor water conservation programs and indoor/outdoor efficiency rebates are now live and interest in the turf replacement pilot program continues to grow.

Lynn R. Morgan Water Treatment Facility (WTF)

Average Flow Million Gallons per Day (MGD): **2019** – 3.3 MGD **2020** – 4.1 MGD **2021** – 4.3 MGD

July 2021 maintains the record for the highest monthly average flows at 10.1 MG, while November 2019 had the lowest flows at 1.36 MG. Warm and dry conditions this year have extended the summer irrigation season.

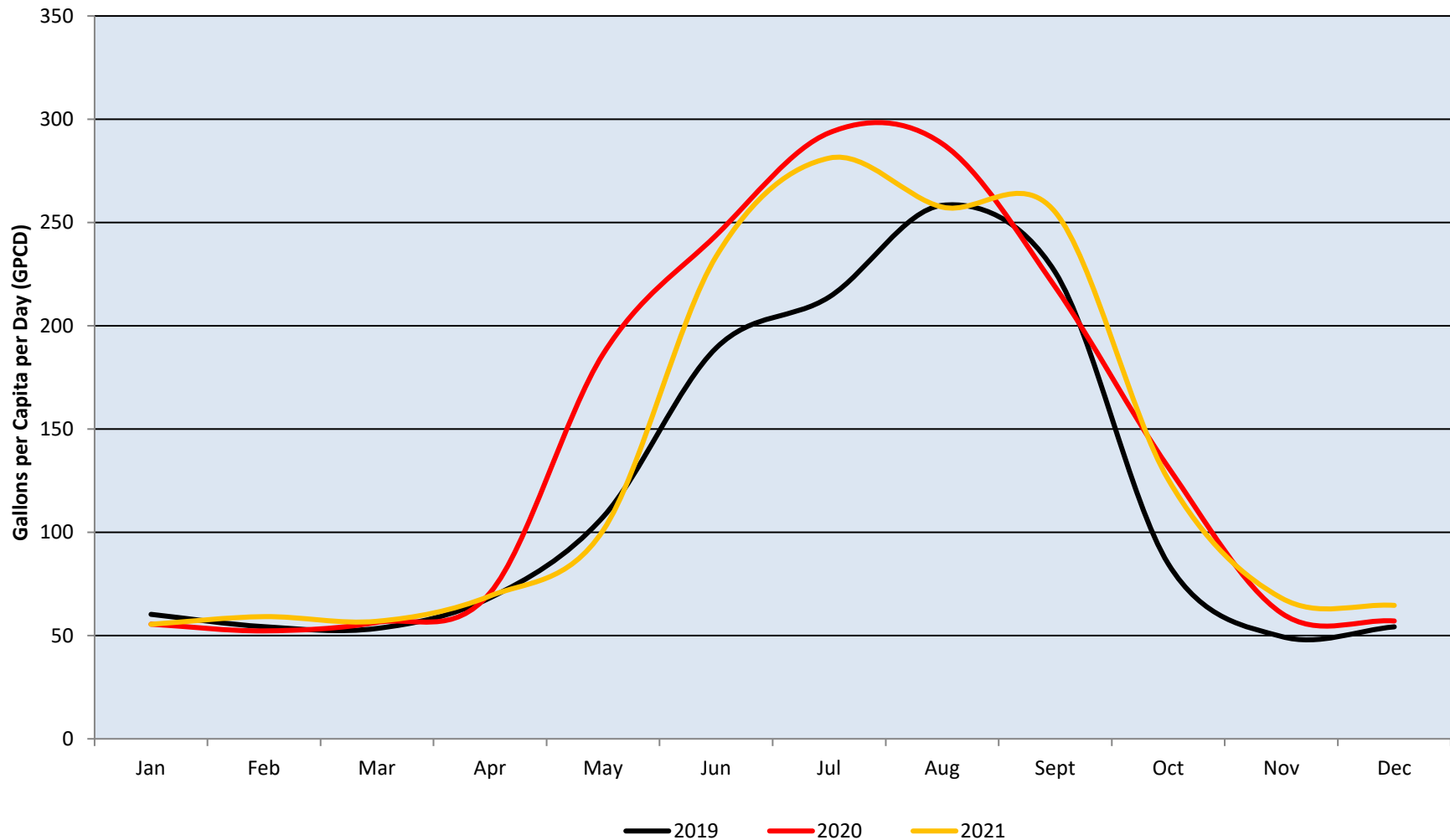
Average Monthly Production



Average Per Capita per Day (GPCD): **2019** – 118 GPCD **2020** – 143 GPCD **2021** – 136 GPCD

July 2020 had the highest average daily usage at 294 gallons GPCD. November 2019 had the lowest usage at 50 GPCD. Indoor demands during winter remain relatively stable. Average daily usage took a big jump in 2020 and 2021 due to COVID and drought. Reducing summer irrigation and increasing reuse water availability will reduce reliance on treated water supplies in the future.

Average Daily Usage Per Capita



North Water Reclamation Facility

Average Flow MGD:

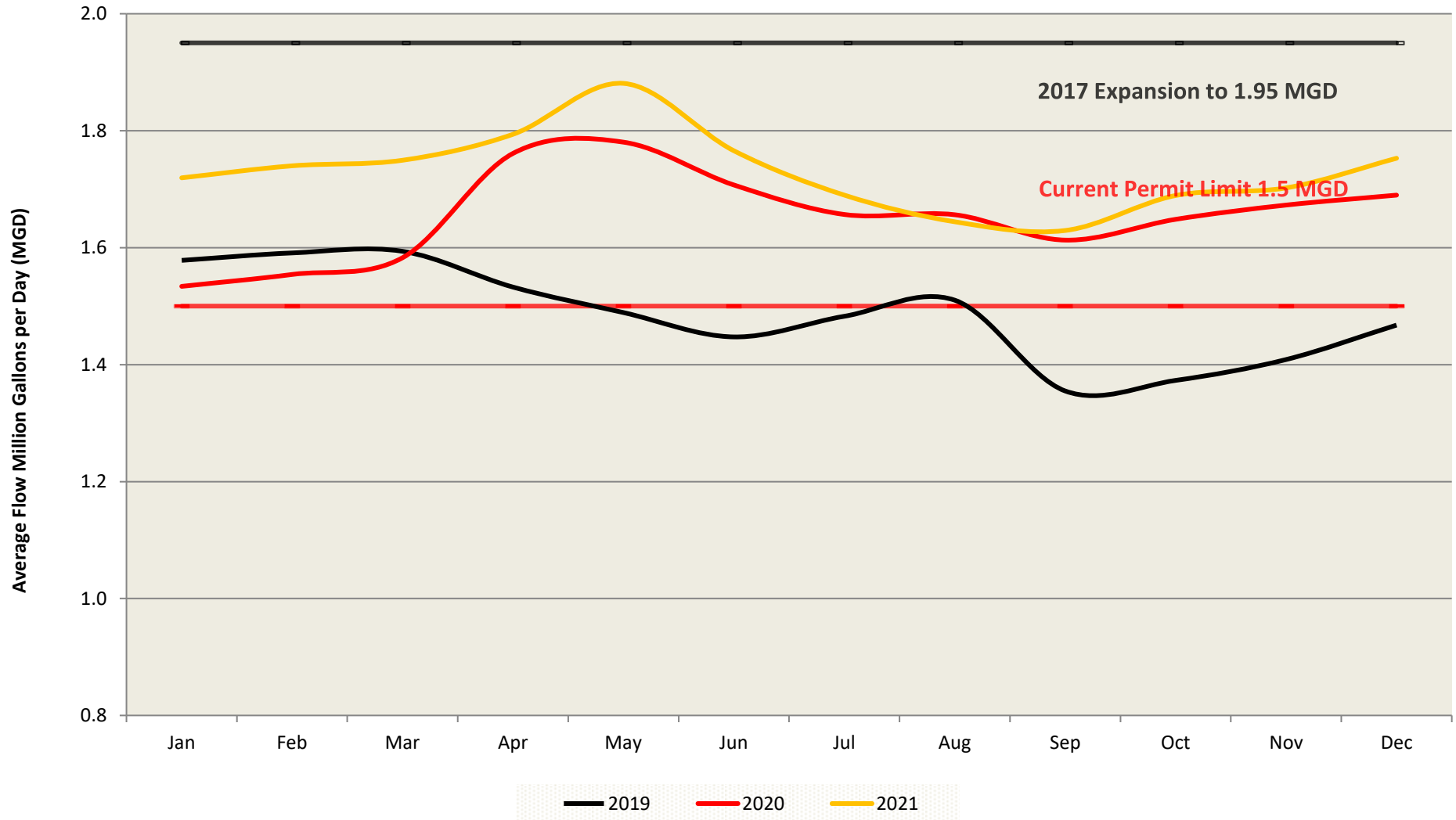
2019 - 1.49 MGD

2020 - 1.66 MGD

2021 - 1.73 MGD

September 2019 had the lowest average flow of 1.36 million gallons per day (MGD). May 2021 set a high average monthly flow of 1.88 MGD. We recently heard from CDPHE that they plan to issue our new discharge permit for public comment at the end of the year.

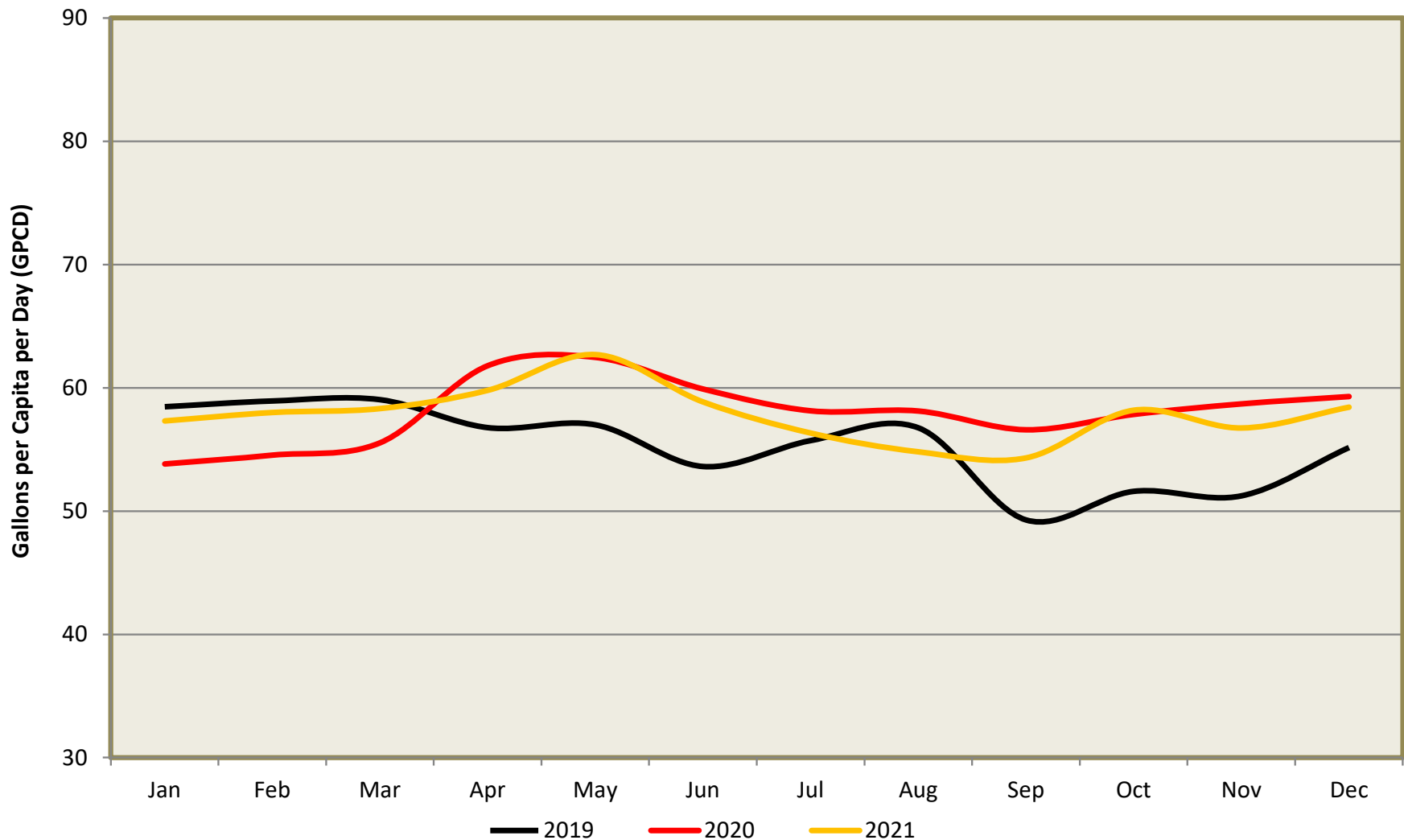
Average Monthly Flows



Annual Gallons Per Capita per Day (GPCD): **2019 - 55 GPCD** **2020 - 58 GPCD** **2021 - 58 GPCD**

This graph depicts customer indoor water usage. May 2021 had the highest usage at 63 GPCD. September 2019 had the lowest usage at 49 GPCD. Fall, with relatively little precipitation and dropping groundwater levels, is a good indicator of true daily flows.

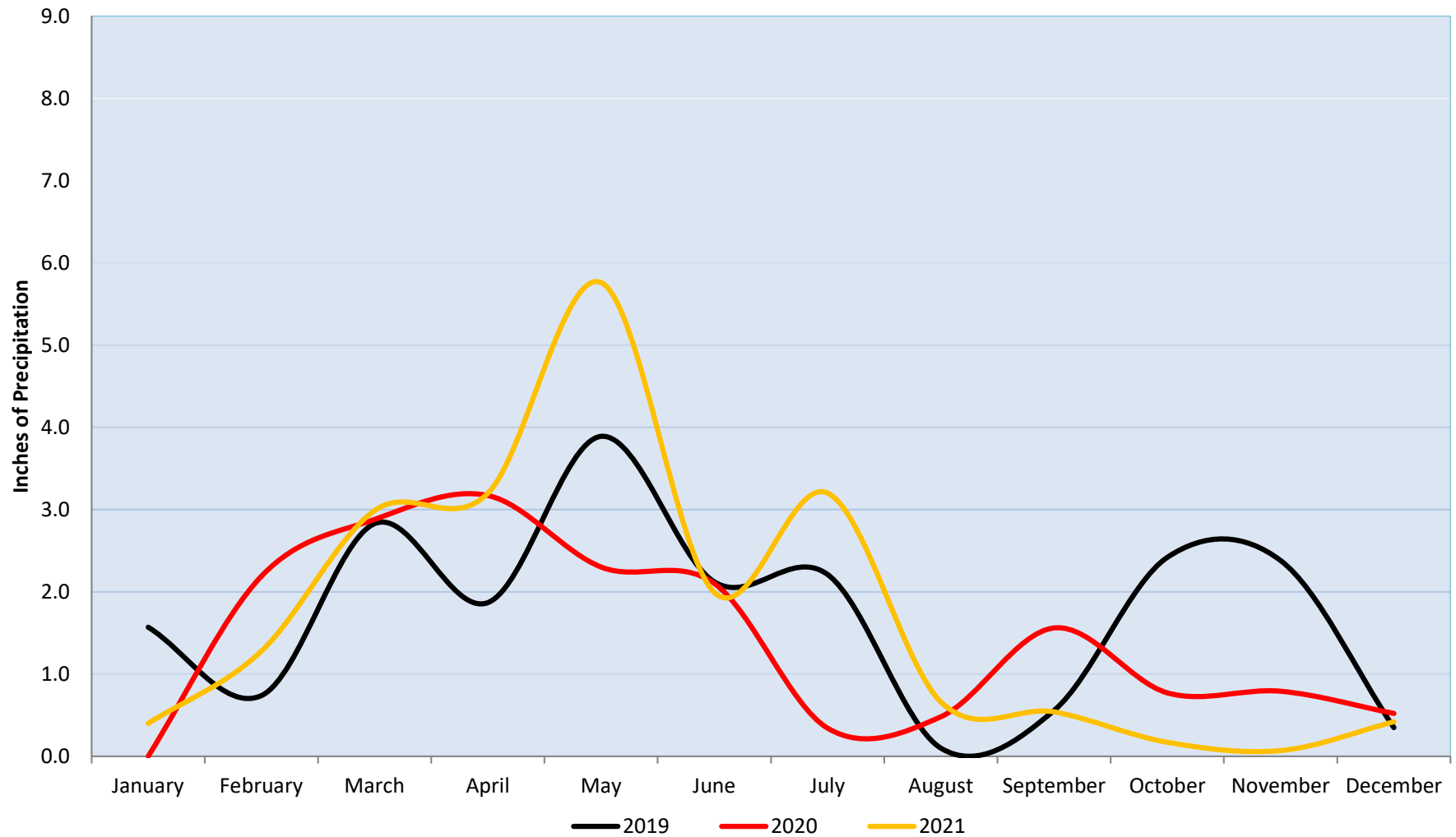
Average Daily Usage Per Capita



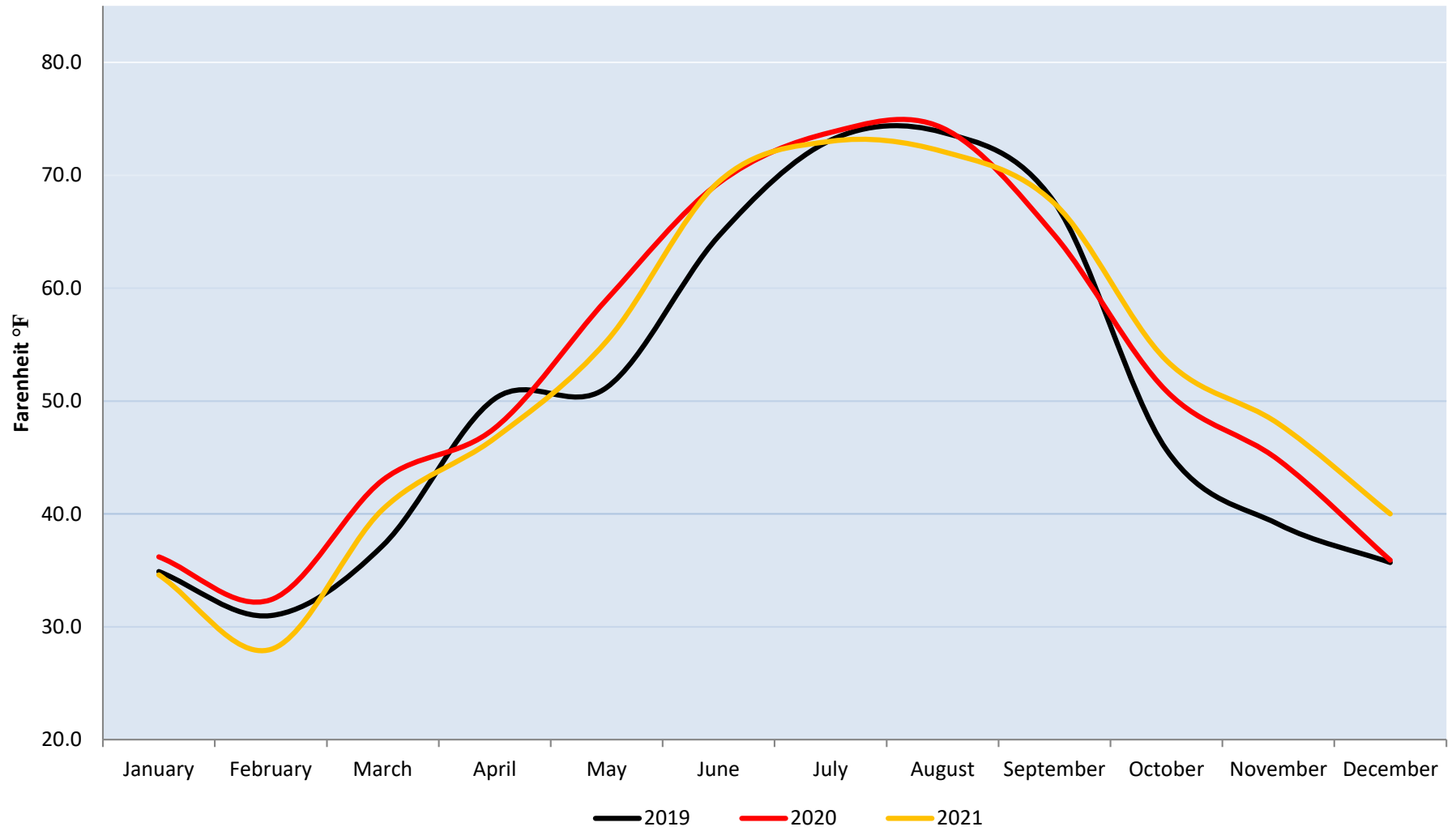
Monthly Data for Boulder – National Oceanic and Atmospheric Administration (NOAA) & Natural Resource Conservation Service (NRCS)

NOAA is predicting near normal precipitation and temperatures into late January. Drought conditions are somewhat worsening due to low precipitation levels this year.

Precipitation



Mean Temperature



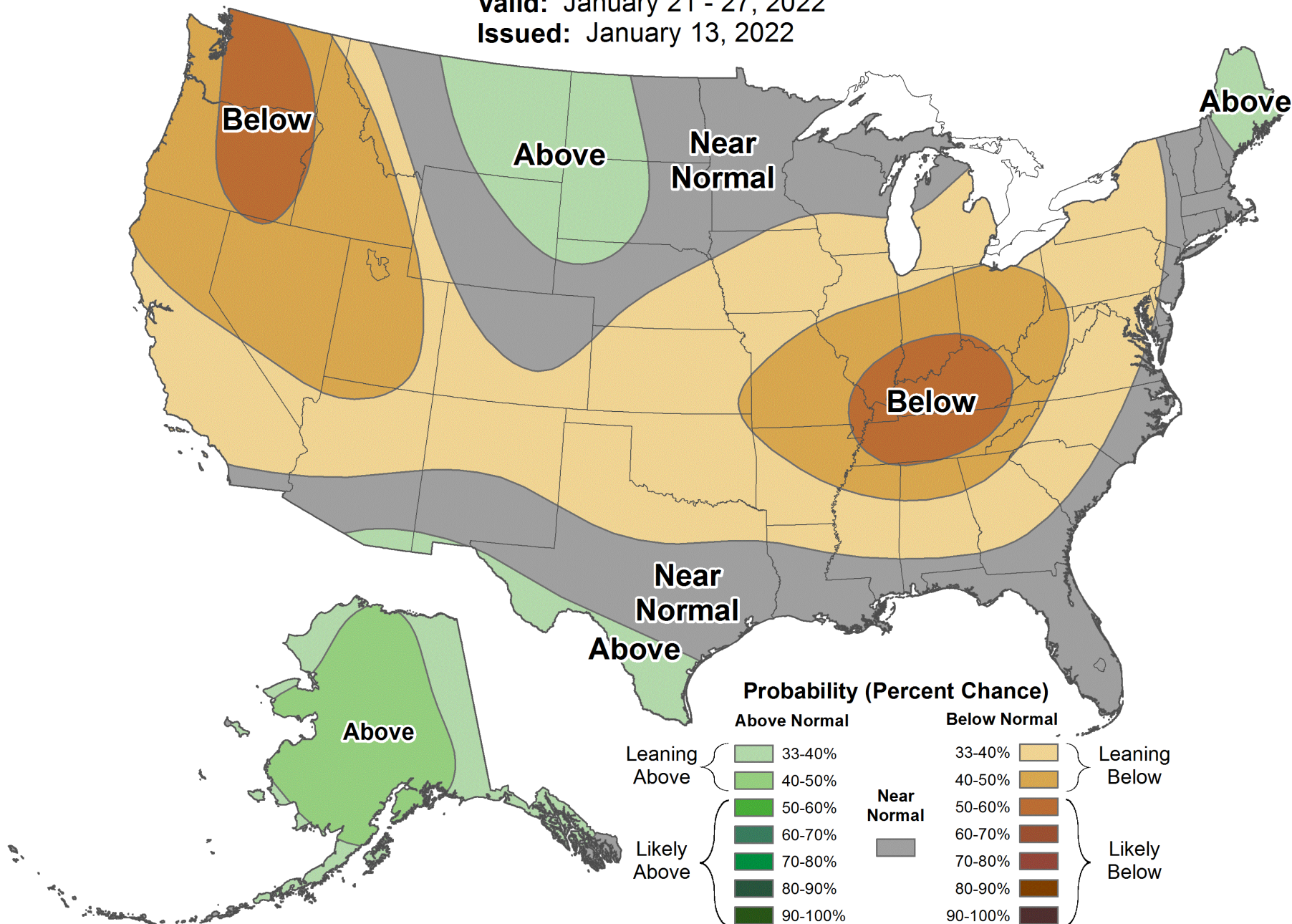


8-14 Day Precipitation Outlook



Valid: January 21 - 27, 2022

Issued: January 13, 2022



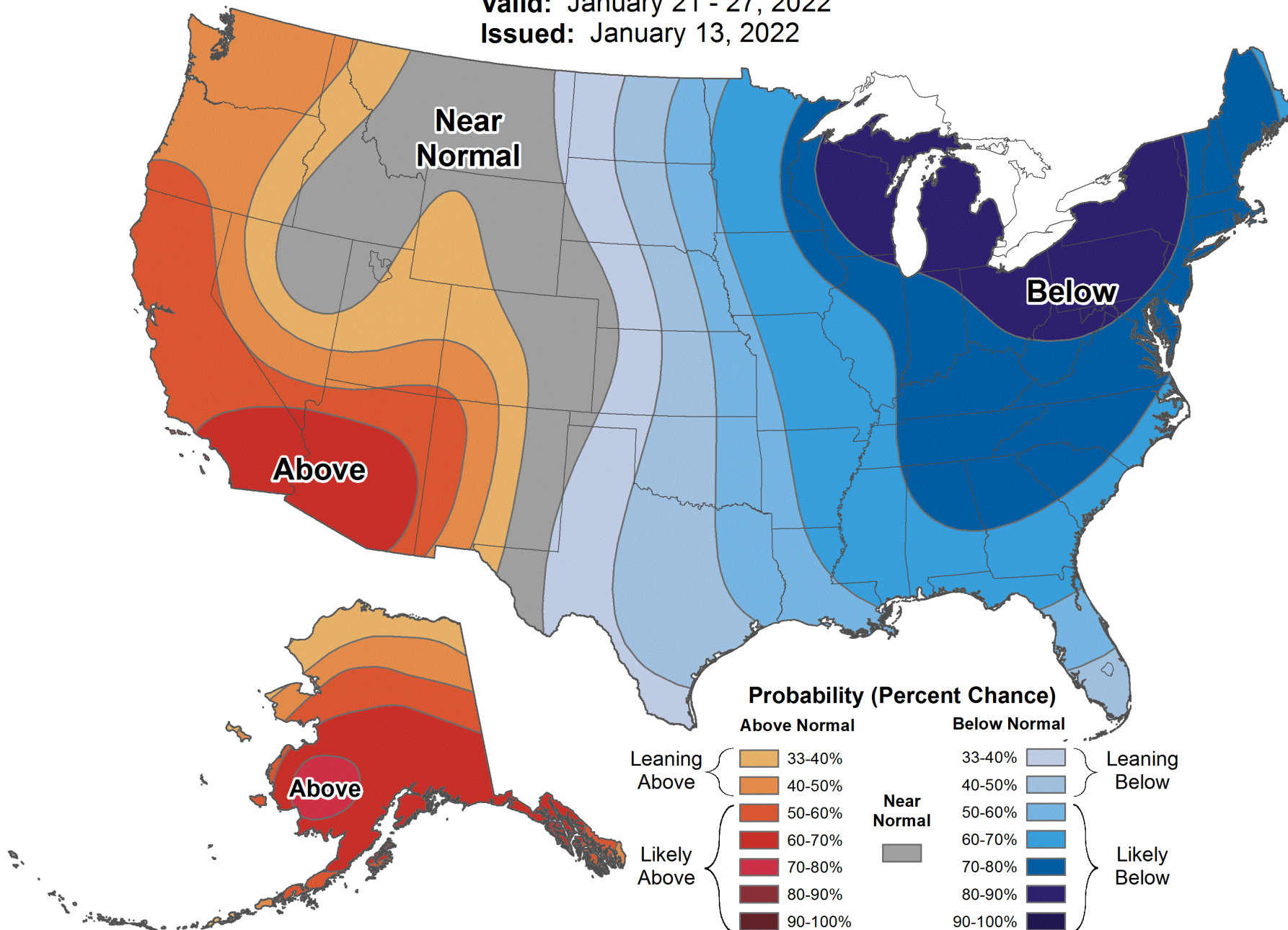


8-14 Day Temperature Outlook



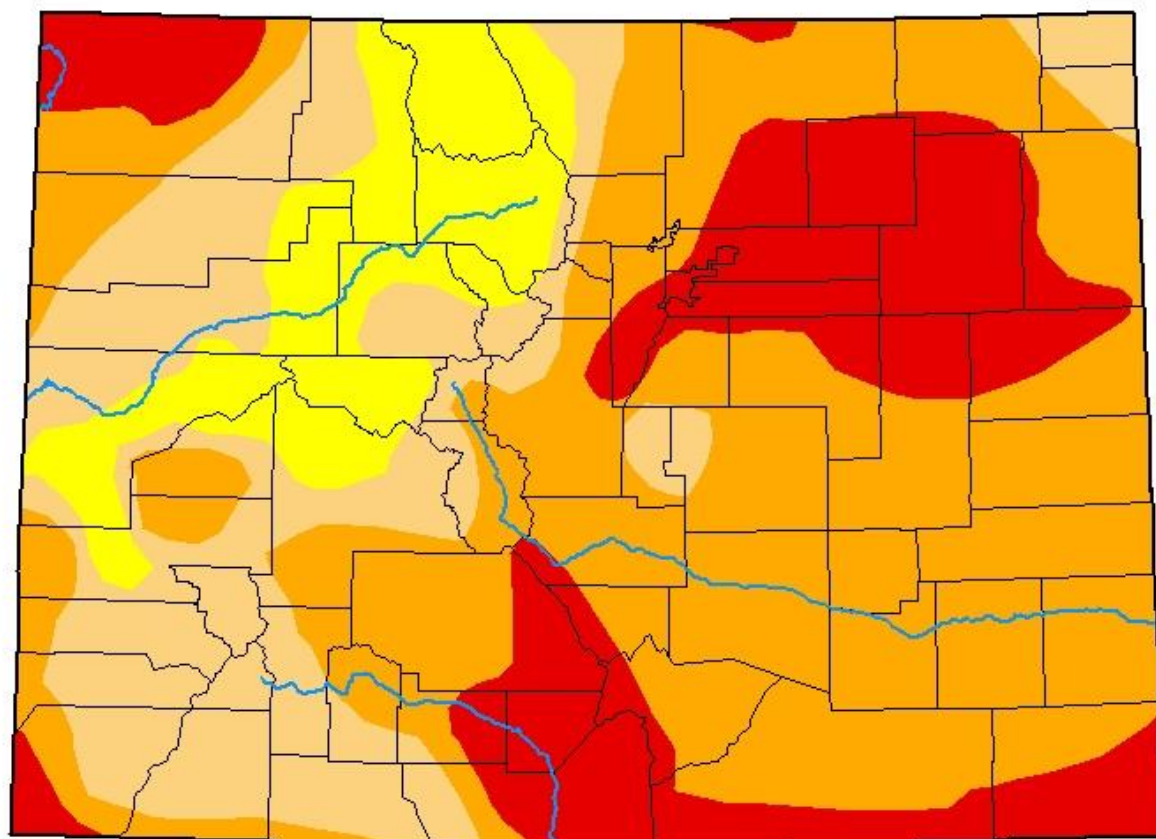
Valid: January 21 - 27, 2022

Issued: January 13, 2022








U.S. Drought Monitor Colorado

January 11, 2022
(Released Thursday, Jan. 13, 2022)
Valid 7 a.m. EST



Intensity:

-  None
-  D0 Abnormally Dry
-  D1 Moderate Drought
-  D2 Severe Drought
-  D3 Extreme Drought
-  D4 Exceptional Drought

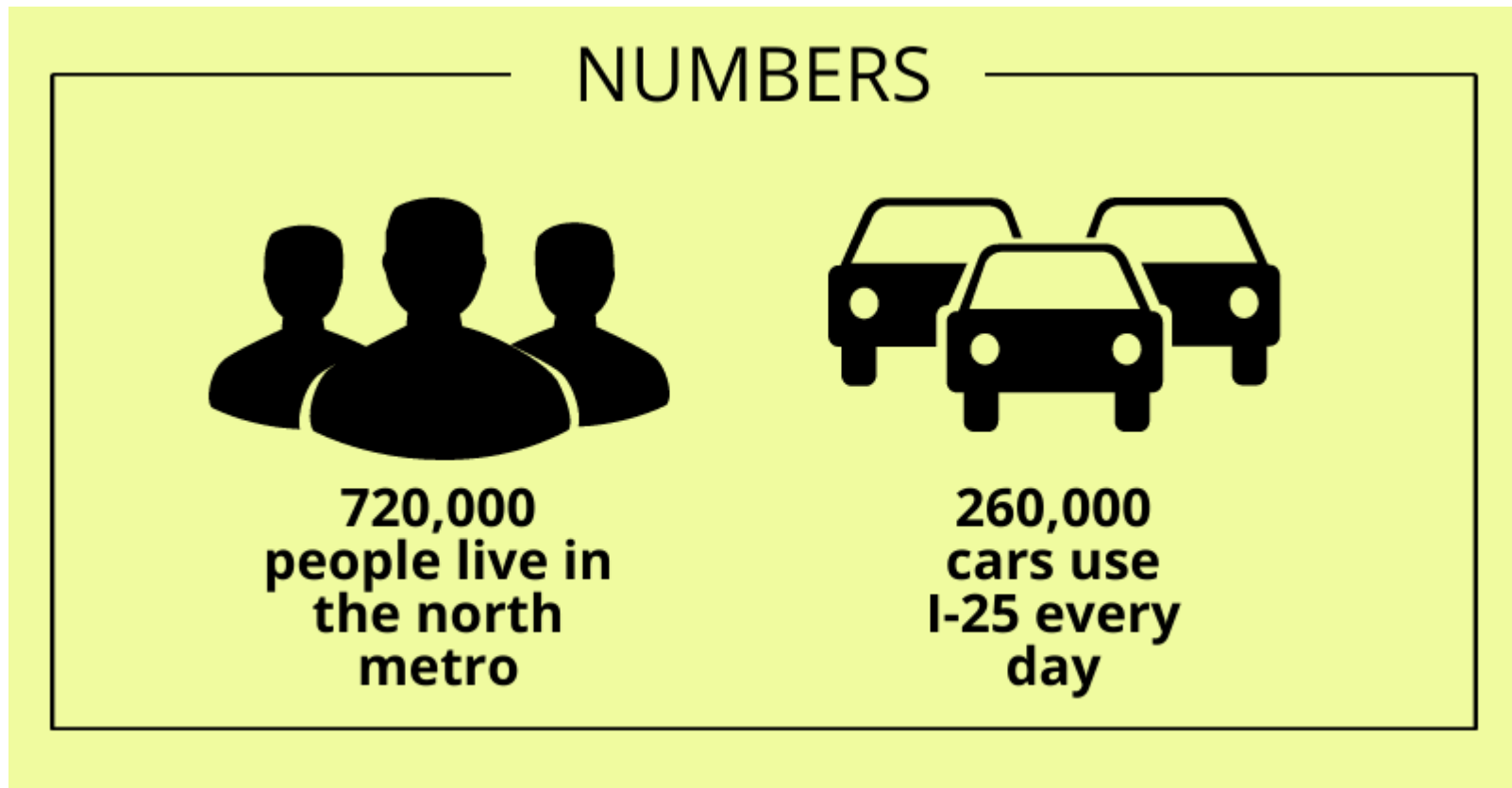
The Drought Monitor focuses on broad-scale conditions. Local conditions may vary. For more information on the Drought Monitor, go to <https://droughtmonitor.unl.edu/About.aspx>

Author:

Richard Tinker
CPC/NOAA/NWS/NCEP



droughtmonitor.unl.edu



Marshall Fire Transportation Resources Are Available

[Commuting Solutions](#) is reaching out today with available transportation resources for those who have been impacted by the Marshall Fire. The recent fire that devastated our area has brought a multitude of challenges. Commuting Solutions is providing resources from local and regional partners regarding transportation options available to help those affected by the fire.

Disaster Assistance Center (DAC)

The Disaster Assistance Center (DAC) is located at [1755 S. Public Road in Lafayette](#).

Boulder County Services

[Boulder County](#) is working with local and regional agencies to provide transportation assistance to and from the impacted communities as well as to the DAC. Boulder County has created a webpage with [available information and resources](#).

Information is also [available in Spanish](#).

RTD Services

Complimentary ride passes are available at the DAC for those who need them. Commuting Solutions can also provide ride passes— email cathi@commutingsolutions.org or call at 303-604-4383.

As of Jan. 6, customers booking [FlexRide trips](#) can book rides to any destination throughout east Boulder County including to/from Superior, Louisville, Lafayette and the DAC.

To schedule a FlexRide trip, go to rtd-denver.com/services/flexride/trip-planner. FlexRide trips can also be scheduled by downloading the FlexRide app (on the [Apple App Store](#) or [Google Play Store](#)) or by phone at 303-299-6000.

Ride Free Lafayette Service

As of Jan. 6, customers can book rides to any destination throughout east Boulder County including to/from Superior, Louisville, Lafayette and the DAC using [Ride Free Lafayette](#) (RFL).

You can book a trip by visiting www.ridefreelafayette.com, by calling 833-456-3359 or via the On Demand Transit Rider app.

Via Mobility Service

Via Mobility Services' Paratransit division can provide rides to people and assist with trips to the DAC Monday through Friday from 8 a.m. to 4:30 p.m. by calling 303-447-9636. For assistance after those hours, please call 303-725-4160.

Car Share Services

Uber vouchers for general travel are available at the DAC. Lyft is offering two rides, up to \$15 each, through their [LyftUp Disaster Response program](#) through Jan. 18.

Colorado CarShare is offering a variety of free services to those affected. Call 303-720-1185 or email info@carshare.org.

Bicycle Services

[Community Cycles](#) is offering free used bikes for transportation for those affected. To apply for a bike, email firebikes@communitycycles.org and include your height, address and a brief description of how you'll be using the bike.

[Louisville Cyclery](#) is collecting and distributing used bikes. Visit their shop to donate or if you need a bike at 889 E. South Boulder Road in Louisville.

Telework Services

[Confluence Small Business Collective](#) in Lafayette is offering free workspaces to those who have been impacted. Visit [Confluence online](#) for more information.