



OSTAB Status Report

Open Space and Trails Advisory Board

Presented by: David Tazik

March 25, 2025



- Acknowledgements
- What does OSTAB do?
- Board Members
- Highlights
- Prairie Run (formerly East Boulder Creek Plan)
- BERT (Boulder Erie Regional Trail)
- Going Forward



Acknowledgements

- Town Council Liaisons
 - John Mortellaro (2025)
 - Dan Hoback (2024)
- Parks & Recreation
 - Luke Bolinger (Director)
 - Mike McGill
 - Matt Spinner
- Planning and Development
 - Chris LaRue
- Town Clerk's Office



What does OSTAB do?

- Evaluate OS&T during the development approval process and submit formal responses.
- Advise Town Council on planning, acquisition, development, and management of OS&T.
- Coordinate with BOCO and WECO, and nearby jurisdictions on identifying and acquiring open space and trails.
- Assess and recommend amendments to OS&T provisions in town plans and ordinances.



As a Community Liaison

- Advocated for Boulder to Erie Regional Trail with Boulder County Commissioners.
- Serve as a liaison between the community and the town on questions and issues related to open space.
- Participates in annual Town Fair at the Open Space booth.



Board Members

- **Ken Martin -- Chair:** Information Technology
 - Has worked on many town advisory boards -- conservation and outdoor recreation advocate (>25 years)
- **Christine Felz – Vice Chair:** Environmental Studies and Geography
 - Land and environmental project management (>10 yrs)
- **Phil Brink:** Animal and Environmental Sciences
 - Consults on compliance and water resource challenges (>20 yrs)
- **Tim Payne:** Engineering Manager -- Aerospace/Defense Industry (>20 years)
 - Passionate outdoorsman and cyclist and community volunteer
- **Bill Rigler:** Public relations and strategic communications
 - Active on multiple boards, Chambers, and EDCs throughout Boulder County
- **Joe Swanson:** Natural/Park Resource Management
 - BOCO Parks and Open Space Noxious Weed Dept (>10 yrs)
- **Dave Tazik:** Ecology, Regional/Environmental Planning
 - Research Ecologist/Project Scientist (>30 yrs)



Highlights

- Reynolds Property Acquisition – November 2024
- Review of Parks & Recreation 2025 work plan
 - Recommend further development of Single Track
 - Improve trail connectivity and signage
 - Look for opportunities to enhance natural and created wetlands
- Support for Prairie Run Open Space (East Boulder Creek)
 - BOCO Parks and Open Space Advisory Committee
 - BOCO Board of County Commissioners
- Support for Boulder to Erie Regional Trail (BERT)
 - City of Boulder Board of Trustees
 - BOCO Board of County Commissioners
- Input to 2024 Comprehensive Plan
 - Greenway trail system and habitat connectivity
 - Ensure open space access in multi-family and mixed-use communities
 - Balance quantity of open space with quality and connectivity

Reynolds Property



A+B = 6.72 acres C = 29.19 acres. D = 2.99 acres
South of Vista Parkway and east of County Line
Road adjacent to Coal Creek.



1.43 acres just west of S. Main St



Prairie Run Overview

CO Hwy. 52

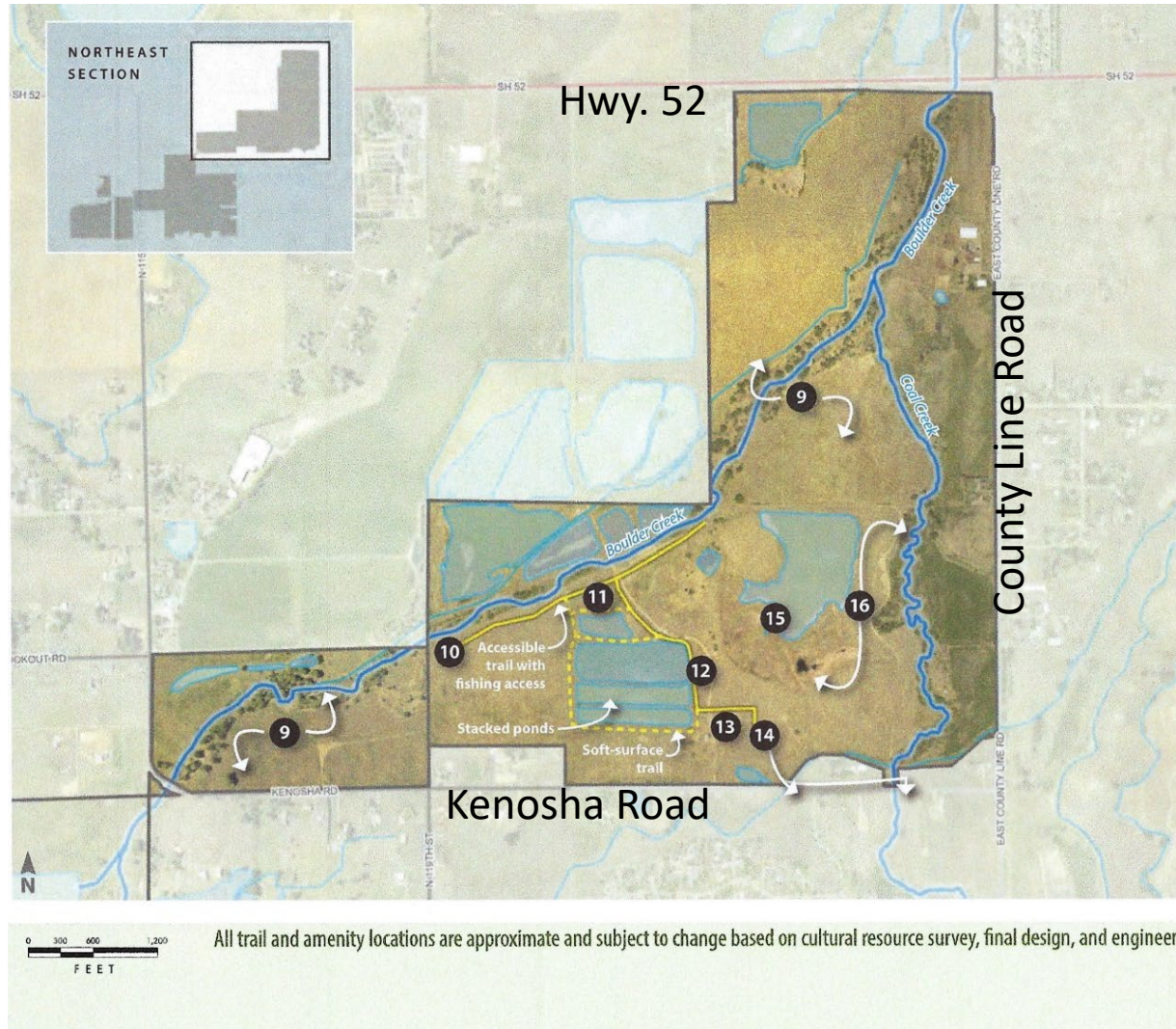
- 1,350 acres
- 5-mile stream corridor (Boulder & Coal Creeks)
- 5 miles or trails

US Hwy. 287

County Line Road

Jasper Road

Prairie Run (NE Section)



MAP KEY:

- 9. Wildlife habitat & agriculture preservation area: closed to public uses
- 10. Small shelter
- 11. Large shelter and nature play area
- 12. Potential fishing pier and watercraft access
- 13. Existing oil & gas well will be fenced
- 14. Trailhead (includes parking area) and future connection to future southwest trailhead and Town of Erie trails
- 15. Protect Critical Wildlife Habitat: closed to public uses
- 16. Wildlife habitat preservation area: closed to public uses

MAP LEGEND:

- General Area of Management Action
- Accessible Trail
- Soft-Surface Trail
- Perennial Stream
- Main Ditch
- Lake or Reservoir

Allowed Uses

- Hiking
- Biking
- Fishing
- Paddling
- Equestrian

Open sunrise to sunset
On-trail use only

Prairie Run (SW Section)

MAP KEY:

1. Wildlife habitat & agriculture preservation area: closed to public uses
2. Protect Critical Wildlife Habitat: closed to public uses
3. Potential future B.E.R.T. connection
4. Trailhead (includes parking area)
5. Fishing access
6. Bench/rest area
7. Agriculture preservation area: closed to public uses
8. Potential future connection to Town of Erie trails and future northeast trailhead

MAP LEGEND:

General Area of Management Action

Soft-Surface Trail

Perennial Stream

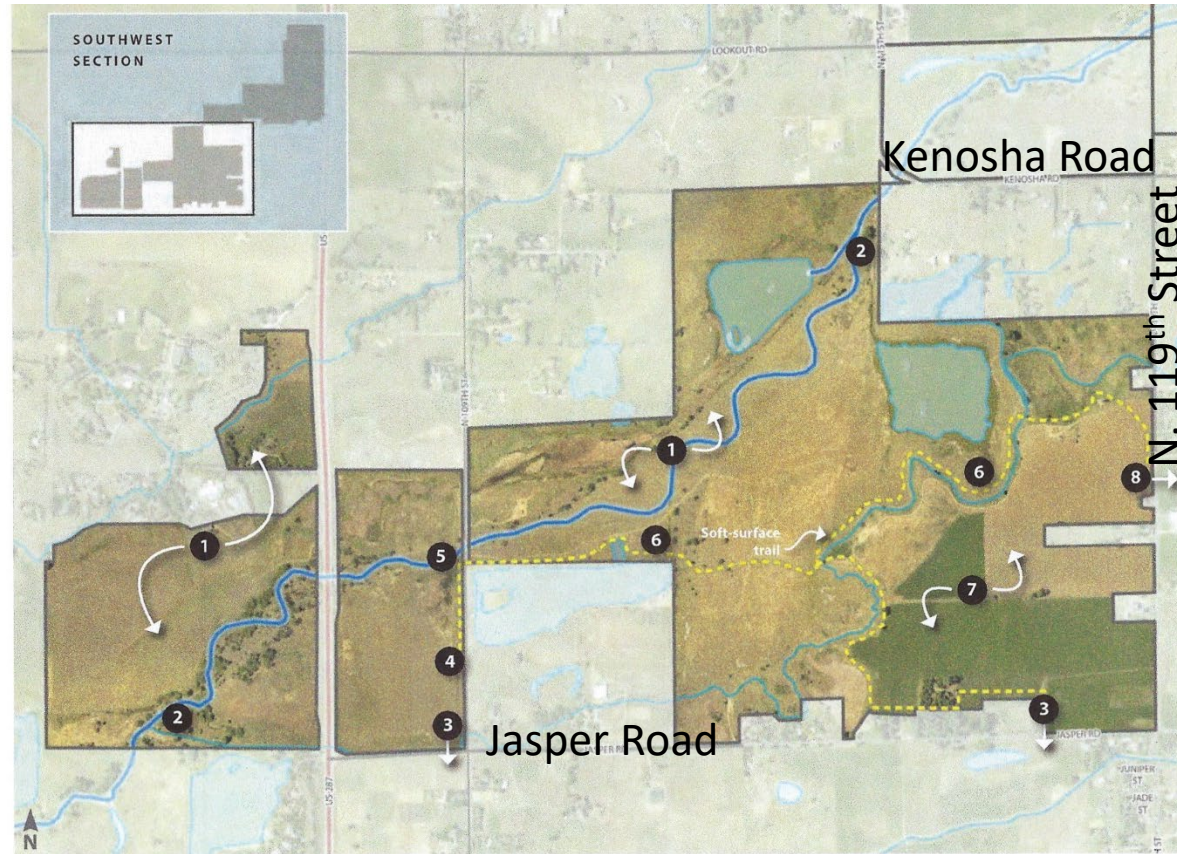
Main Ditch

Lake or Reservoir

Allowed Uses

- Hiking
- Equestrian
- Biking
- Fishing

Open sunrise to sunset
On-trail use only



All trail and amenity locations are approximate and subject to change based on cultural resource survey, final design, and engineering.



BERT Overview

61 Street

County Line Rd

Major Challenges:

- Crossing US 287
- Multiple raptor nest between 75th & 95th Streets – Colorado Parks & Wildlife setbacks

BERT – Erie Portion

Hwy. 287



- Future trailhead likely along Jasper Rd
- Portion near County Line Rd previously constructed by Town of Erie
- Connector from County line Rd to Coal Creek Trail previously constructed by Town of Erie



Going Forward

- Wise Homestead Open Space
 - Develop trails to emphasize excellent views of the Front Range
 - Connect with BERT trail and the Prairie Run Open Space
- Trail connectivity with Prairie Run Open Space
- PROST Playbook – Strategy Development
- Long range planning
 - Open space acquisition priorities
 - Trail connectivity
 - Habitat quality and connectivity
 - Opportunity for public engagement
- Outreach to property owners
- Town Fair & Arbor Day
- Support to Parks & Recreation as needed