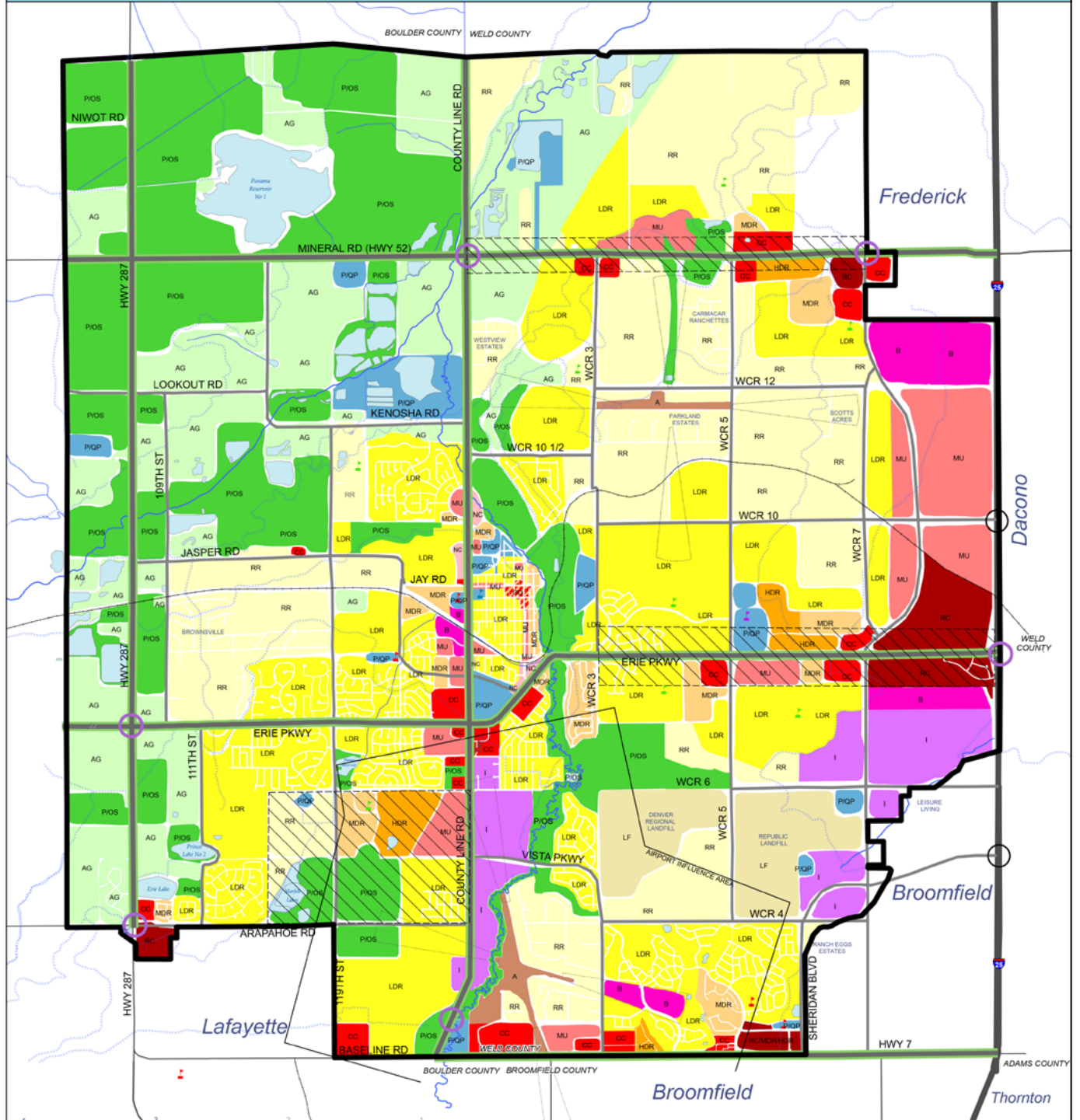


Town of Erie, Colorado Comprehensive Plan - 2015 Update Land Use Plan Map



Land Use Plan Legend

AG Agriculture	MDR Medium Density Residential (6-12 du/ac)	B Business	Canal/Ditch
PIOS Parks/Public Open Space	HDR High Density Residential (12-20 du/ac)	I Industrial	Railroad
PIQP Public/Quasi Public	DD Downtown District	R Reservoirs	Community Gateways
LF Landfill	NC Neighborhood Commercial	CB County Boundary	1-25 Interchange (Future)
A Airport	CC Community Commercial	PA Planning Area Boundary	Elementary School
RR Rural Residential (0-2 du/ac)	RC Regional Commercial	AS Areas of Special Consideration	Middle School
LDR Low Density Residential (2-6 du/ac)	MU Mixed Use		High School
			Proposed



Sources: Boulder CO GIS, Weld CO GIS, CDOT, Town of Erie
 Note: This map is intended to serve as a guide for future land use patterns within the Town of Erie's Planning Area Boundary and is advisory in nature. Land Use patterns depicted on the map are generalizations, recognizing that development proposals may contain a mixture of land uses and density levels which achieve the intent of the Town of Erie Comprehensive Plan. Adopted Date: Dec. 21, 2005.
 The Comprehensive Plan contains guidelines for the refinement of the generalized areas depicted on the map. These guidelines should be referred to by applicants prior to the preparation of a development submittal and by Town staff, elected, and appointed officials as part of the development review process.
 Town Boundary Not Shown - Refer to Zoning Map for Town Boundary

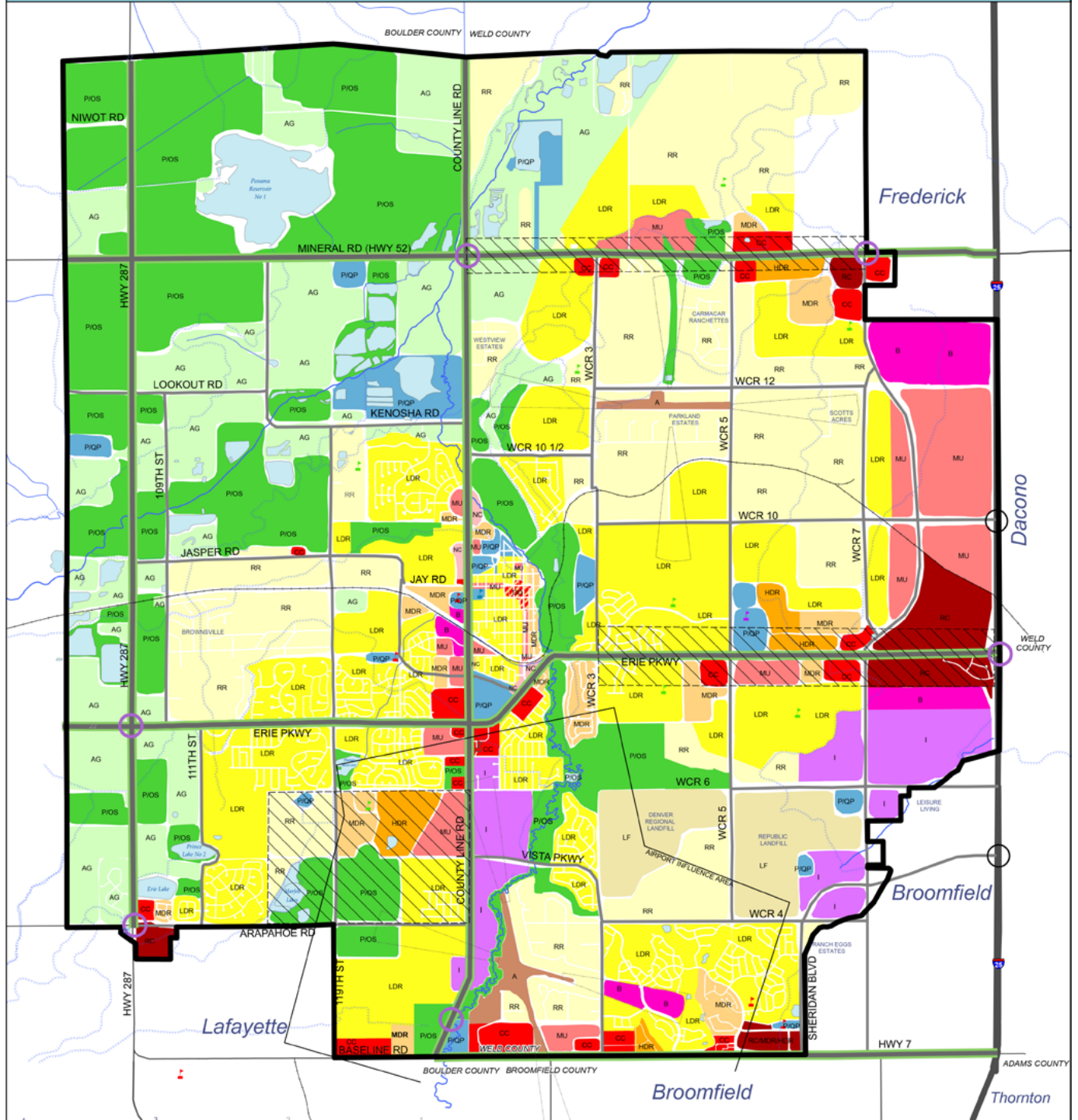
Map Revision Date: June 12, 2017



Existing Comprehensive Plan Map



Town of Erie, Colorado Comprehensive Plan - 2015 Update Land Use Plan Map



Land Use Plan Legend

 AG Agriculture	 MDR Medium Density Residential (6-12 du/ac)	 B Business	 Canal/Ditch
 PIOS Parks/Public Open Space	 HDR High Density Residential (12-20 du/ac)	 I Industrial	 Railroad
 PIQP Public/Quasi Public	 DD Downtown District	 R Reservoirs	 Community Gateways
 LF Landfill	 NC Neighborhood Commercial	 County Boundary	 I-25 Interchange (Future)
 A Airport	 CC Community Commercial	 Planning Area Boundary	 Elementary School
 RR Rural Residential (0-2 du/ac)	 RC Regional Commercial	 Areas of Special Consideration	 Middle School
 LDR Low Density Residential (2-6 du/ac)	 MU Mixed Use		 High School
			 Proposed

0 0.25 0.5 1 Miles

Sources: Boulder CO GIS, Weld CO GIS, CDOT, Town of Erie
 Note: This map is intended to serve as a guide for future land use patterns within the Town of Erie's Planning Area Boundary and is advisory in nature. Land Use patterns depicted on the map are generalizations, recognizing that development proposals may contain a mixture of land uses and density levels which achieve the intent of the Town of Erie Comprehensive Plan. Adopted Date: Dec. 21, 2005.
 The Comprehensive Plan contains guidelines for the refinement of the generalized areas depicted on the map. These guidelines should be referred to by applicants prior to the preparation of a development submittal and by Town staff, elected, and appointed officials as part of the development review process.
 Town Boundary Not Shown - Refer to Zoning Map for Town Boundary

Map Revision Date: June 12, 2017



Proposed Comprehensive Plan Map



