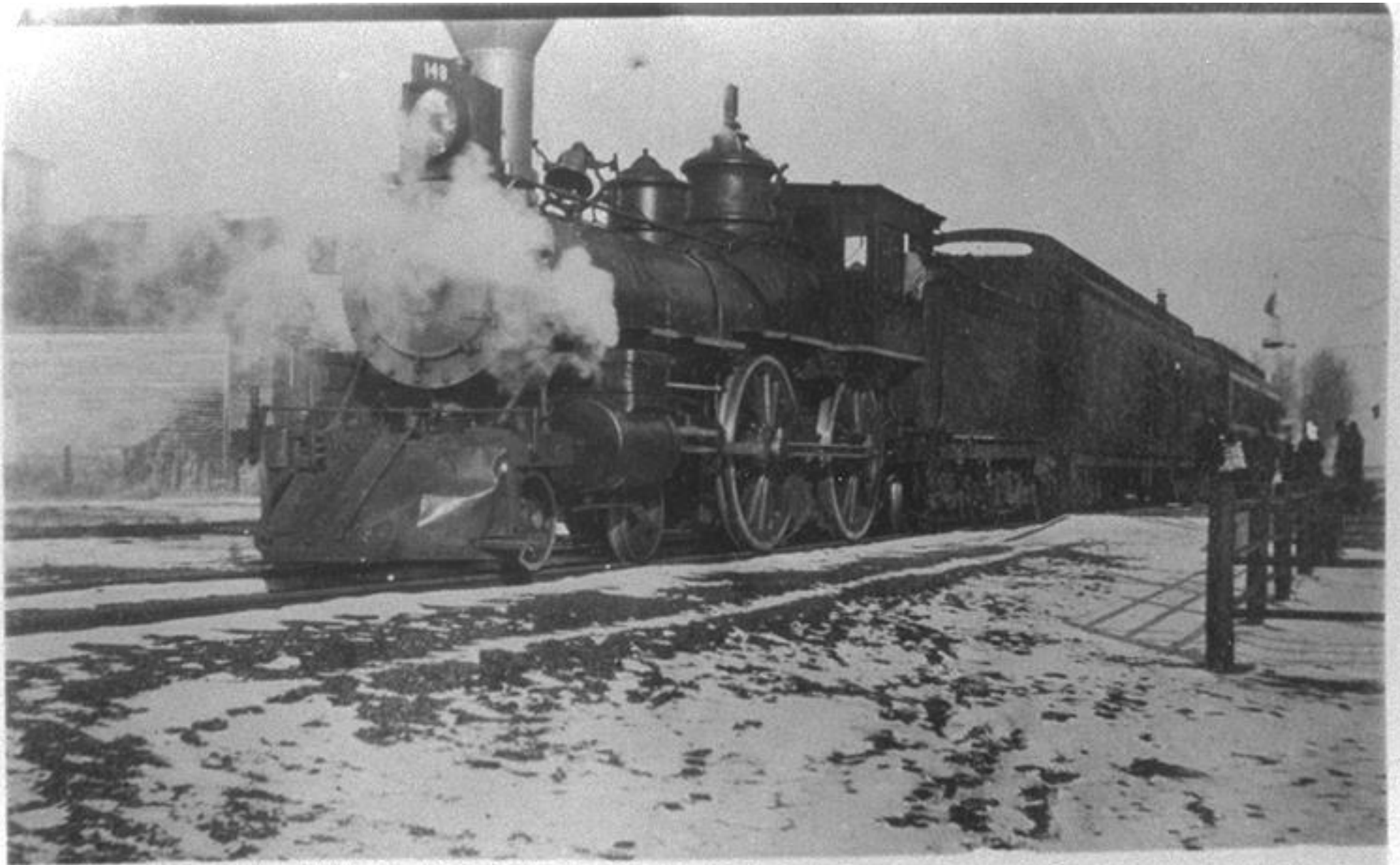


Transit Service Pilot Project

May 2023
Town Board Presentation



Downtown Erie Denver Pacific Spur Railroad 1870



Downtown Erie Denver Pacific Spur Railroad 1870

Background



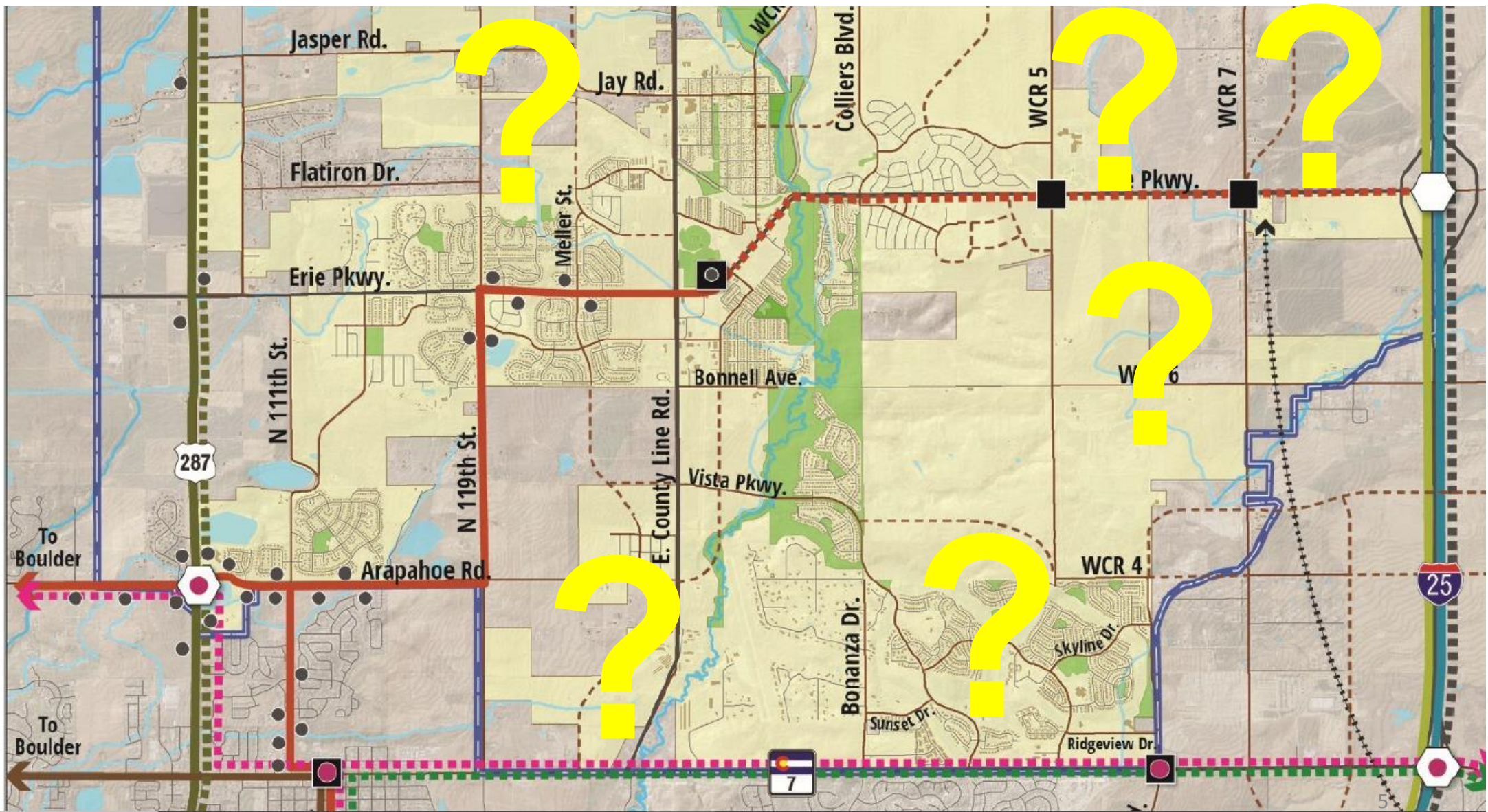
2018 TMP Proposed Transit Network

- SH 7 BRT Station
- Mobility Hub
- Micro-mobility Hub
- North Metro Rail Extension

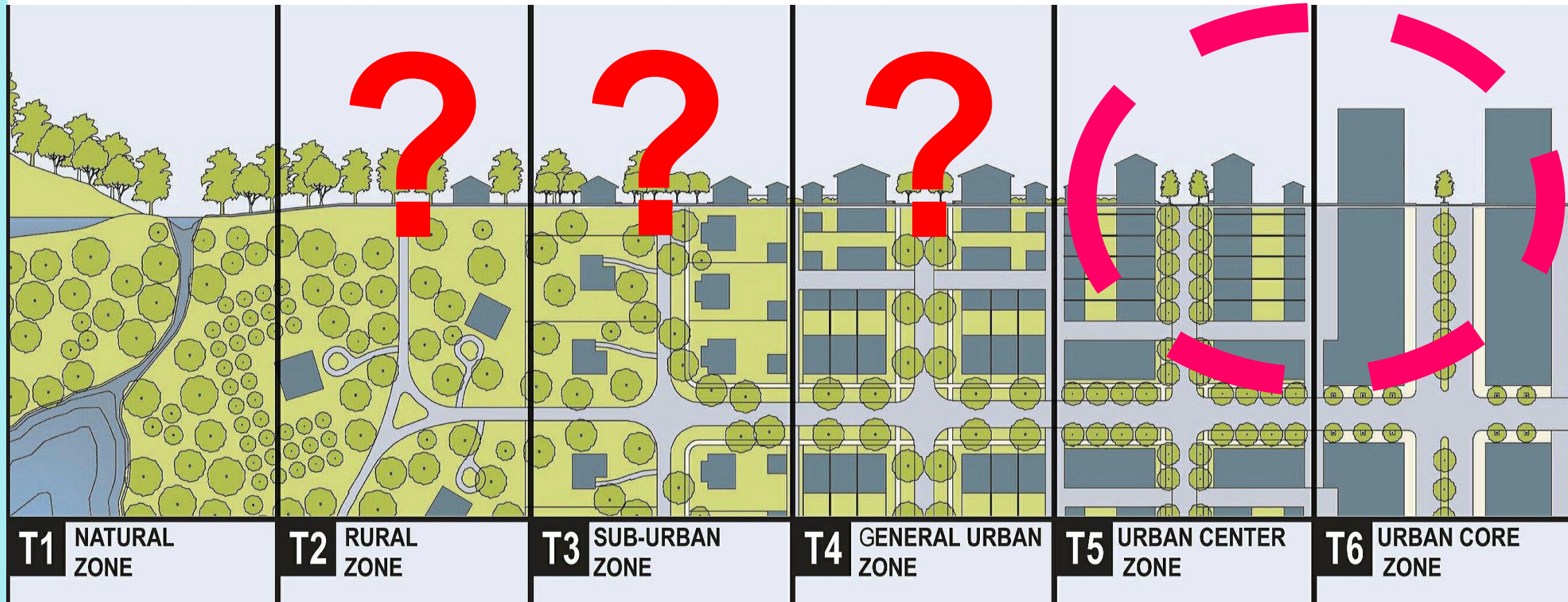
Potential Transit Services:

- JUMP Extension
- US 287 BRT
- SH 7 BRT
- I-25 BRT
- SH 7 Local Route (Interim)

- JUMP
- L, LX
- LSX
- 225
- BUSTANG (CDOT)



Transit Oriented Development @ bus+rail



Improve First and Final Mile Access



Micromobility

0-5 miles



BIKES & SCOOTERS



60% of trips in the US

Medium distance

5-15 miles

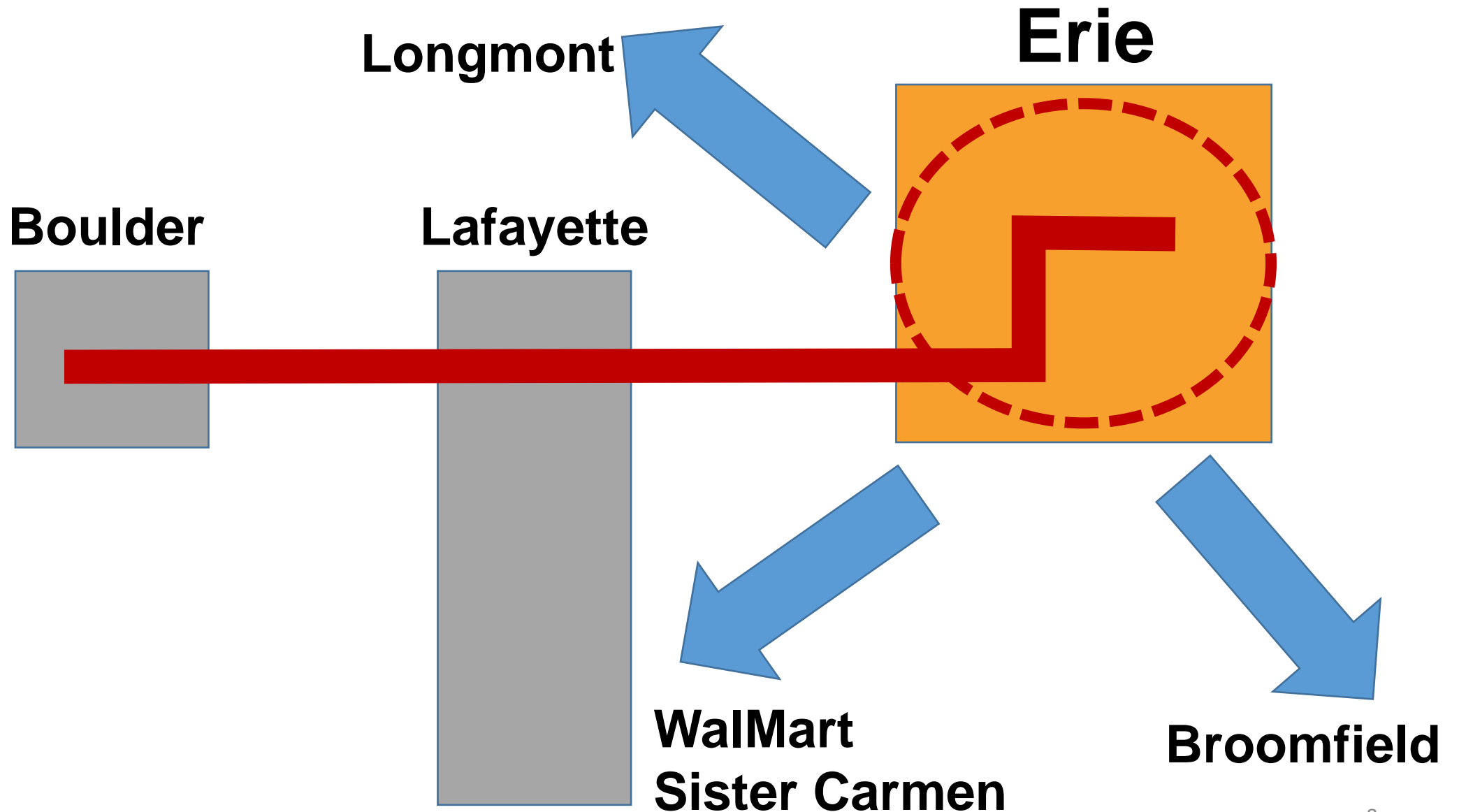


RIDE HAILING



25% of trips in the US

Erie has 28,000 annual transit trips



22,000 annual total JUMP trips (6% of all JUMP Trips)





3,800 annual total RTD paratransit trips

WHAT IS ACCESS-A-RIDE?

Access-a-Ride is RTD's ADA complementary paratransit service. It is a shared-ride service intended for those who cannot use regular fixed-route bus/light rail service due to a disability.

Year	Trips To or From Erie	Trips To Erie	Trips From Erie
2017	134	68	66
2018	2398	1161	1238
2019	2552	1260	1292
2020	915	488	429
2021	1131	557	574
2022	3771	1856	1925





RTD Access-a-Ride Erie Destinations*

Drop-off Location	Trips To Erie
STARBUCKS, 3336 Arapahoe Rd	142
LOWES, 2910 Arapahoe Rd	95
SAFEWAY, 3333 Arapahoe Rd	22
671 Mitchell Way	15
COST CUTTERS, 3335 Arapahoe Rd	5
COAL CREEK FAMILY DENTAL, 440 Erie Pkwy	4
ERIE MEDICAL CENTER, 101 Erie Pkwy	4
DAIRY QUEEN, 3335 Arapahoe Rd	3
ST. LUKES CHURCH, 722 Austin Ave	2

Pickup Location	Trips From Erie
STARBUCKS, 3336 Arapahoe Rd	299
SAFEWAY, 3333 Arapahoe Rd	116
LOWES, 2910 Arapahoe Rd	91
COST CUTTERS, 3335 Arapahoe Rd	5
COAL CREEK FAMILY DENTAL, 440 Erie Pkwy	4
DAIRY QUEEN, 3335 Arapahoe Rd	3
ERIE MEDICAL CENTER, 101 Erie Pkwy	3
ST. LUKES CHURCH, 722 Austin Ave	2
234 Castro Pl	1

****30% of trips known***

1,300 annual total VIA paratransit trips



700 annual Town Day Trip Rides





Erie RTD Funding



	JUMP Ridership	RTD Erie Other Service	Total Erie Ridership
ERIE RTD USAGE	22,000 rides	5,300 rides	27,300 rides
	JUMP bus trips	RTD Erie other bus trips	Total Erie bus trips
ERIE RTD BUS TRIPS	9,000 bus trips	5,300 bus trips	14,300 bus trips
	RTD's JUMP Cost	RTD Other Erie Trip Cost	RTD Total cost for Erie Services
ERIE RTD COST	\$1.3M	\$800K	\$2.1M

	Annual Taxable Expenses per Erie Household	Annual RTD Sales Tax Paid (1.1%) excluding vehicles	Erie Households paying RTD Sales Tax	
ERIE RESIDENT RTD CONTRIBUTIONS	\$67,000	\$737	10,000	\$7.3M

Why do we need transit service?

Systemic Factors

- **Spatial Factors**
 - More Parking, Less Uses
 - Costs of personal vehicles
 - Mismatch
 - Sprawl
- **Financial Factors**
 - ~\$10,000/year to own and Operate a vehicle
 - Wealth building and stability impacts



Source: SPUR

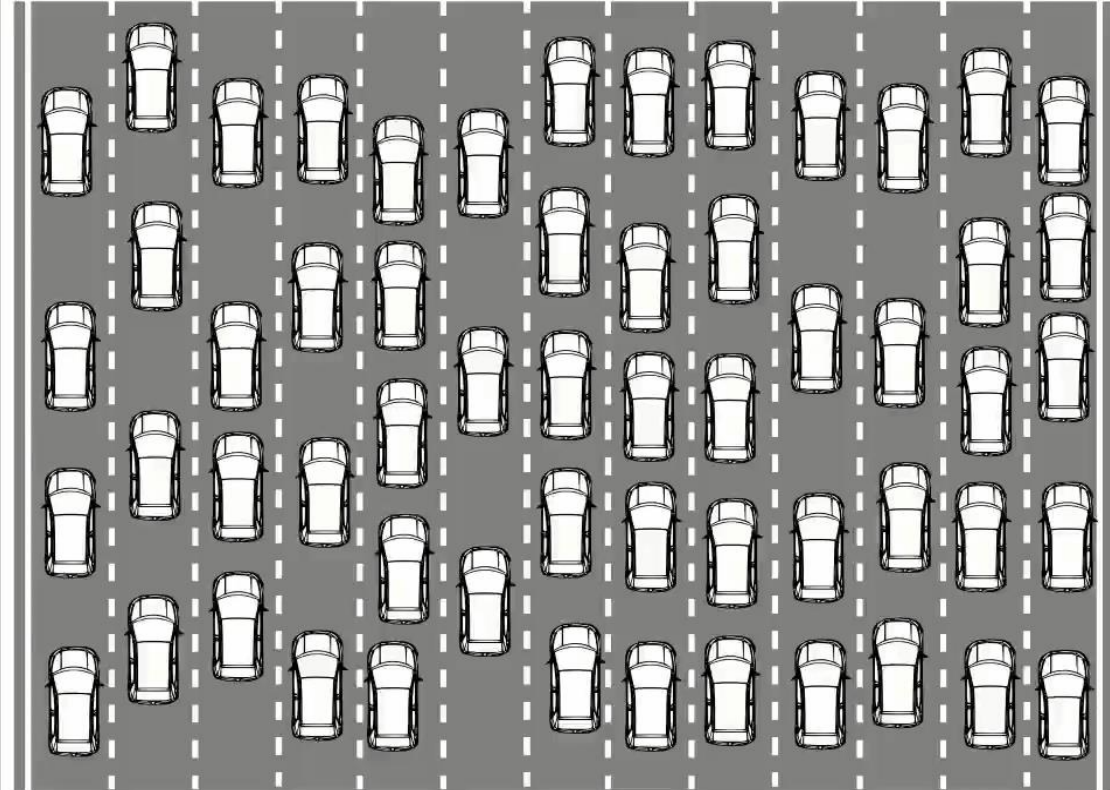


Source: Stephen Matera

Systemic Factors

- **Health Factors**
 - Pollution
 - Fatalities and crashes
 - Health outcomes
- **Social Factors**
 - Economic success
 - Business activities
 - Aging in place
 - Housing security

SCHRÖDINGER'S ROAD SPACE



**TAKING AWAY SPACE FROM CARS WHILE
GIVING THEM MORE SPACE AT THE SAME TIME**

Expenditures

	First	Second	Third	Fourth	Fifth
<i>Total average annual expenditures</i>	\$26,399	\$39,968	\$51,729	\$69,131	\$118,781
One Vehicle (\$5,000)	19%	13%	10%	7%	4%
Two Vehicles (\$10,000)	38%	25%	19%	14%	8%

Source: Bureau of Labor Statistics; Todd Litman, Planetizen (2020)

Amount of space required to transport the
same number of passengers by car, bus or bicycle.



Car?



Bus?



Bicycle?

(Poster in city of Muenster Planning Office, August 2001)

Credit: Press-Office City of Münster, Germany

Tweens + Teens

- Over 30% of Erie's population is under 18 years of age
- Erie High School only school in BC without transit service
- Teens living in homes in Weld County don't have transit service to Town and Rec Center



Older Americans

- Over 10% of Erie's population is over 65 years of age
- Medical appointments, grocery shopping and social engagements



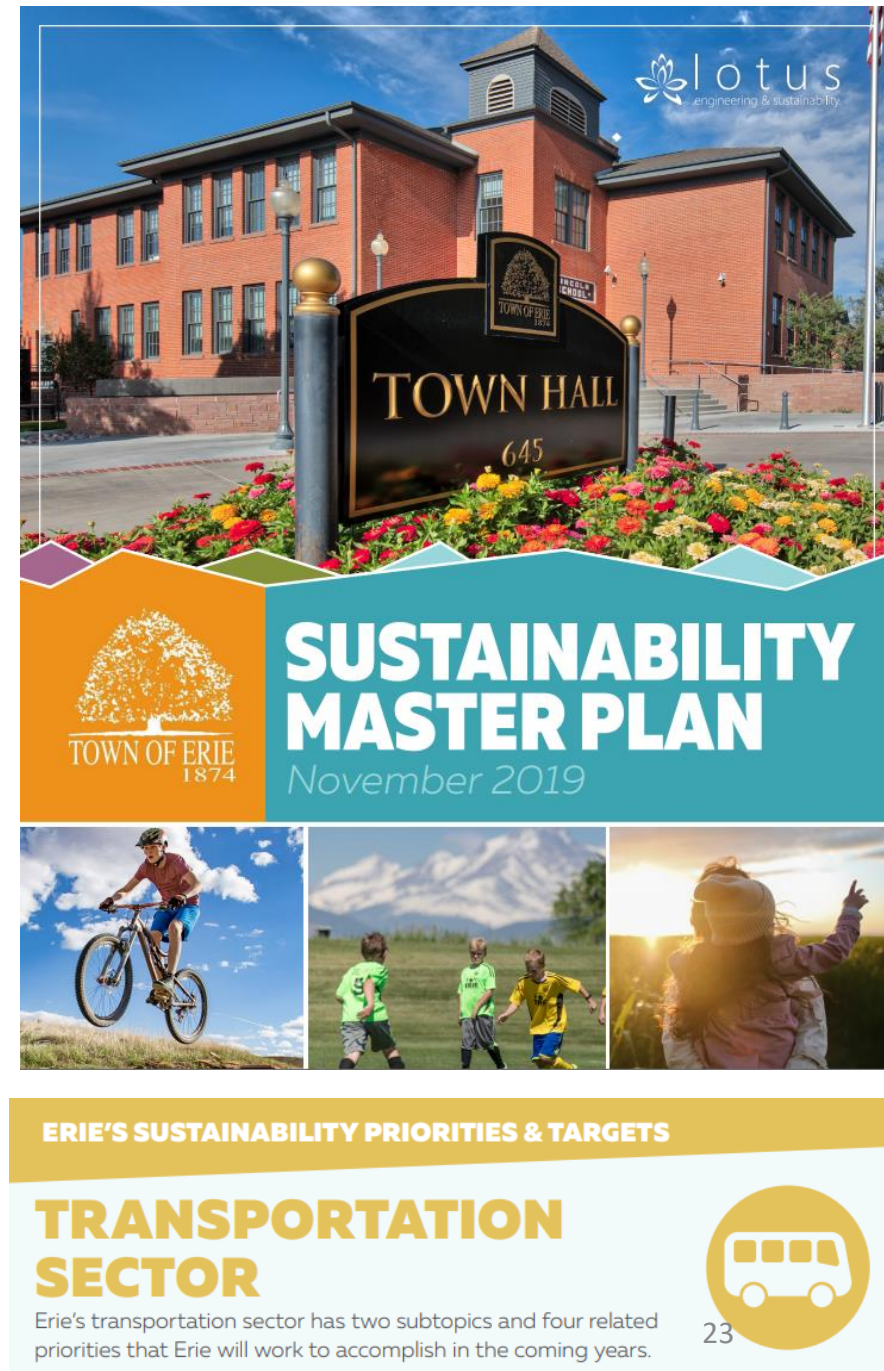
Mixed-Use Places

- Gateway: Over million square feet with 5,000 employees?
- Downtown: Coal Creek Park Events and business district
- Embedded along future regional bus and rail routes
- Future community places for tweens, teens and older adults



Sustainability

- “Provide options to increase the use of alternative modes”
- “Work with regional partners to reduce congestion and single-occupancy vehicle use”
- “Support the development of the local economy to reduce commuting outside of Erie?”



lotus
engineering & sustainability

TOWN OF ERIE
1874


TOWN HALL
645

**SUSTAINABILITY
MASTER PLAN**
November 2019

ERIE'S SUSTAINABILITY PRIORITIES & TARGETS

**TRANSPORTATION
SECTOR**

Erie's transportation sector has two subtopics and four related priorities that Erie will work to accomplish in the coming years.



23

What is the community telling us about transit?

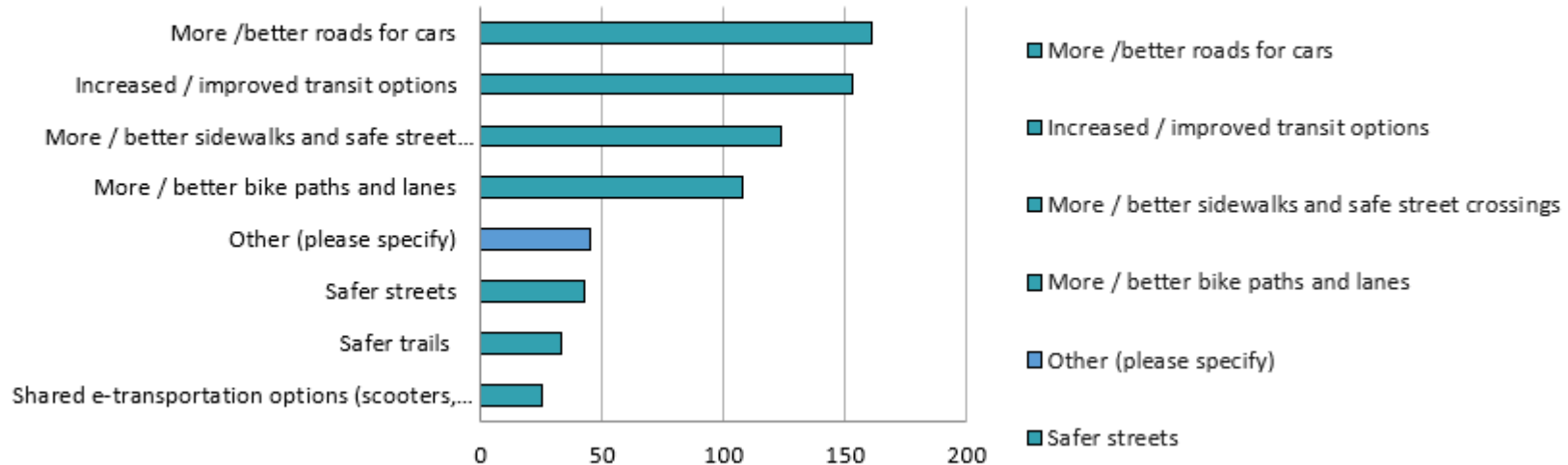
Question: What travel option would you consider to replace driving your car to run an errand (grocery store, post office, recreation center, restaurant, etc.)?

- Fall 2024 Travel Survey



■ Bike (55%) ■ Transit (24%) ■ Walk (21%)

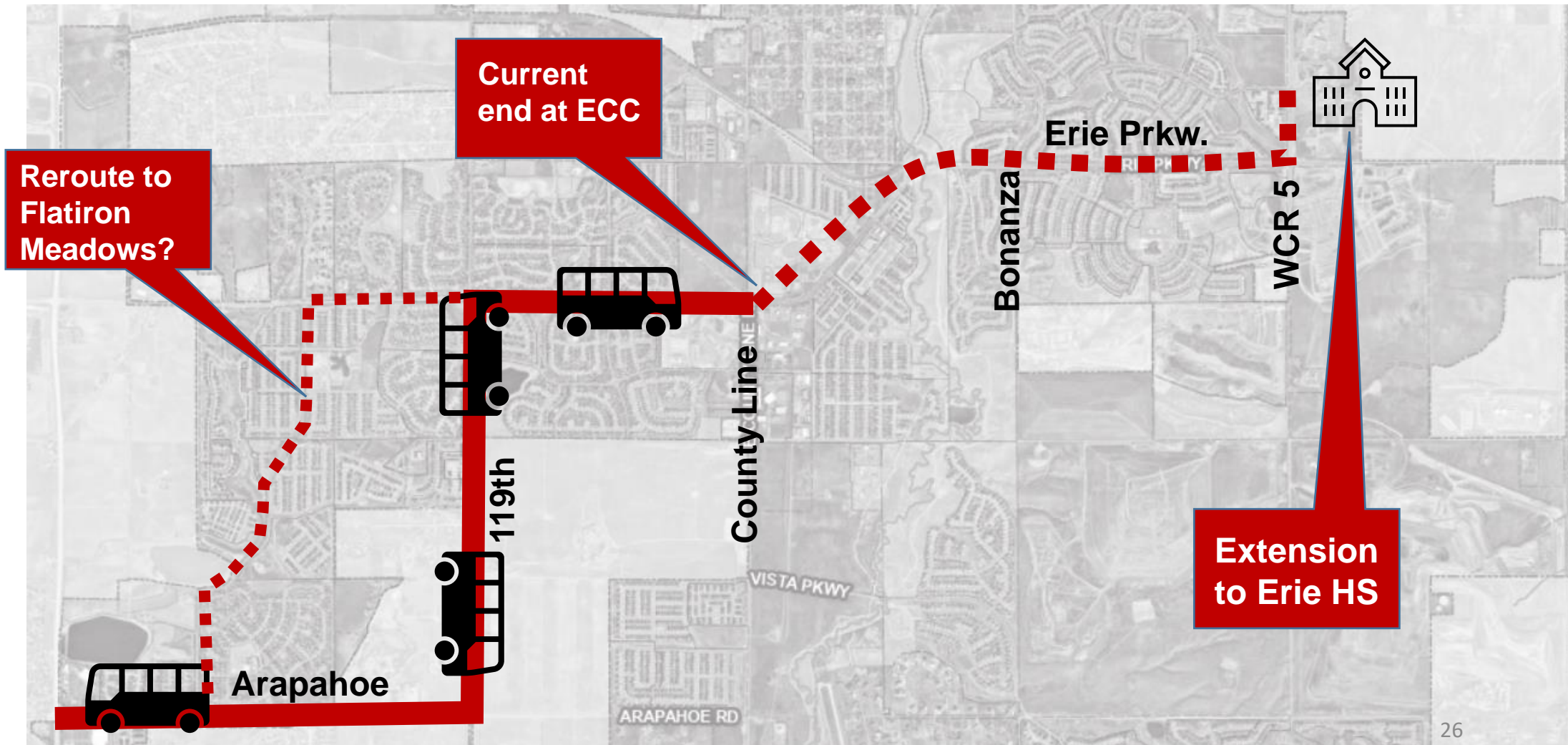
6) What is the most important change you'd like to see around transportation? (select top response)



- December 2024 Elevate Erie Survey

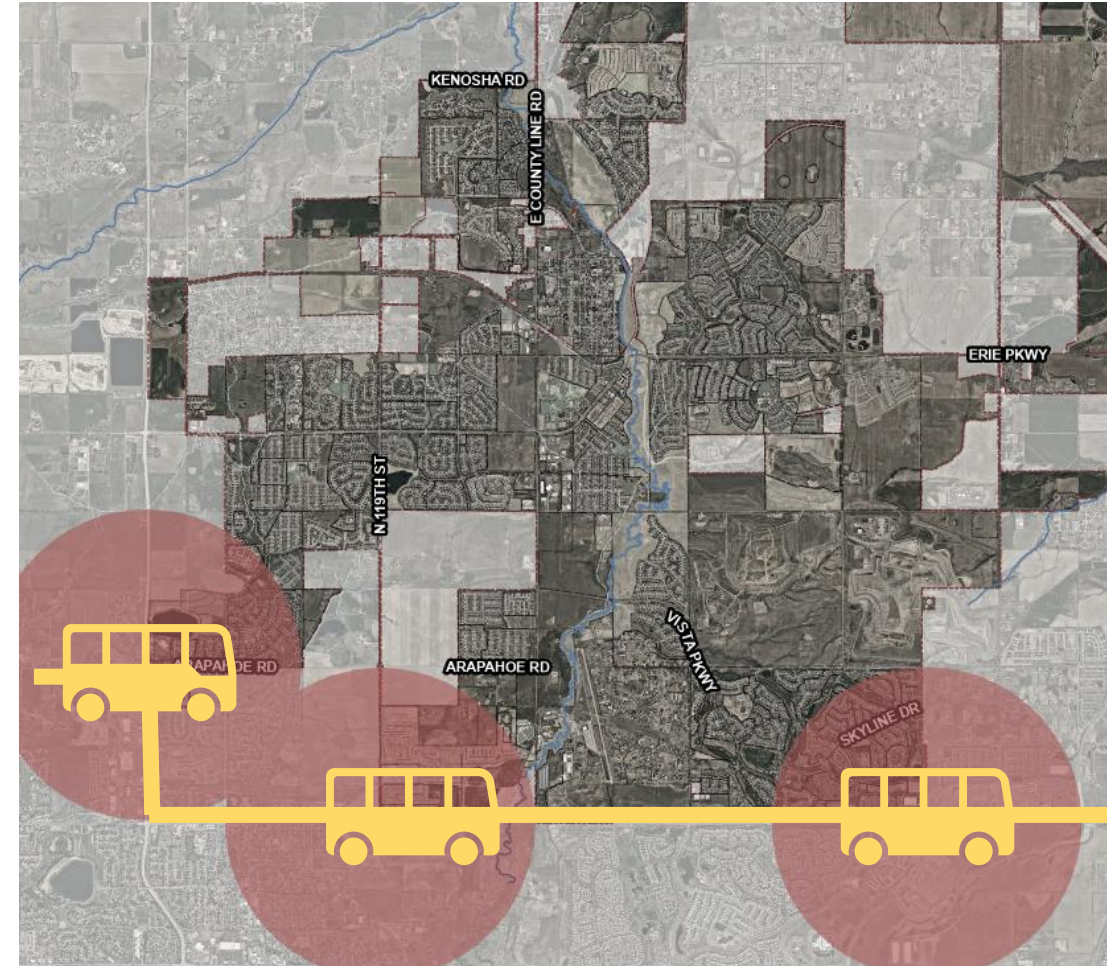
Pilot Transit Network

RTD JUMP Extension to Erie High School



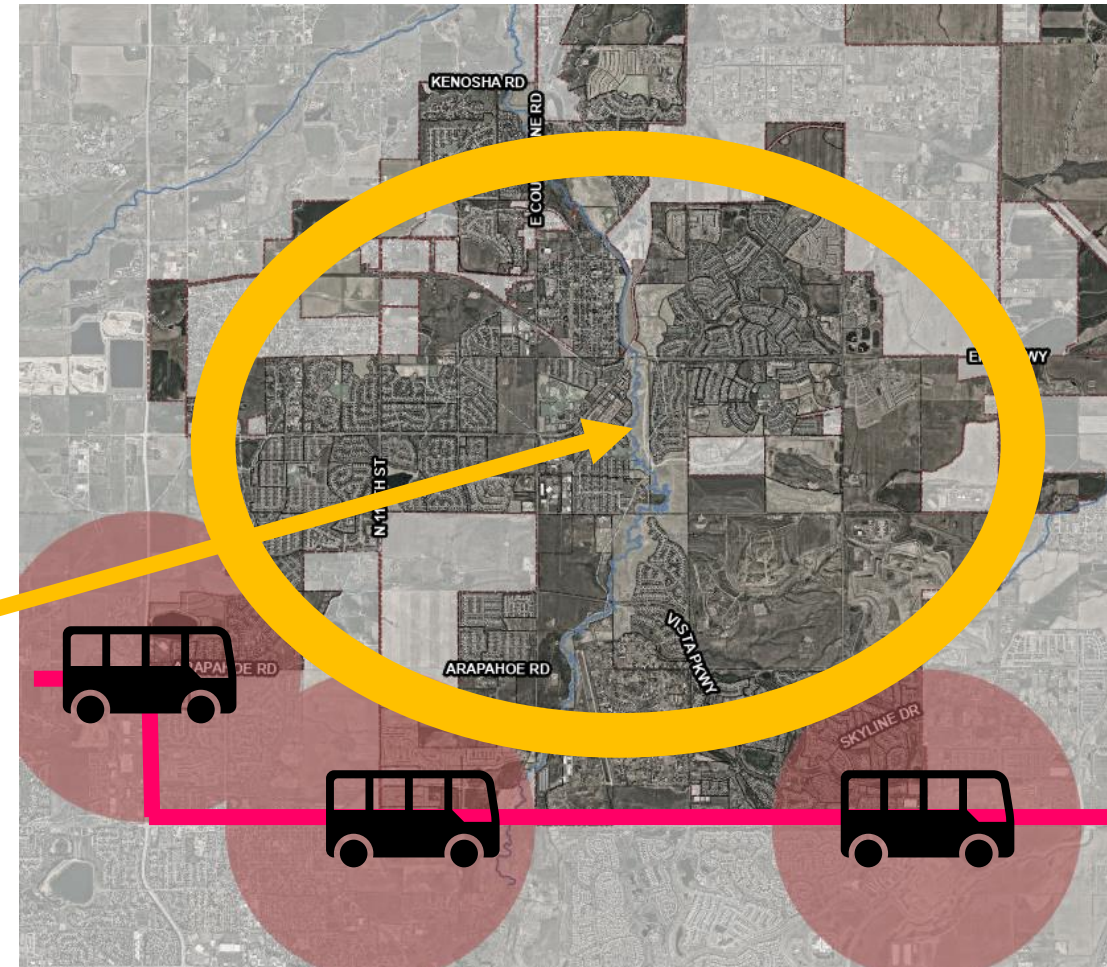
State Highway 7 Bus Rapid Transit (BRT)

- 12 stations Brighton and Boulder + Bustang on I-25
- 5,000 Erie homes withing 1 mile at 2025 launch
- 30-minute service Monday to Friday 12 hours per day
 - Weekend service available in 2026



Connection to BRT

- 5,000 Erie homes located within 1 mile of SH 7 BRT when it launches in 2025
- Erie Flex Ride connects all of Erie to BRT stations for the first or last mile of a trip



Flex Ride Service + Micro Transit Pilot

- Localized transit service
- Curb to curb service
- Similar to uber and lyft
- Reserve a ride online, via phone number or mobile app



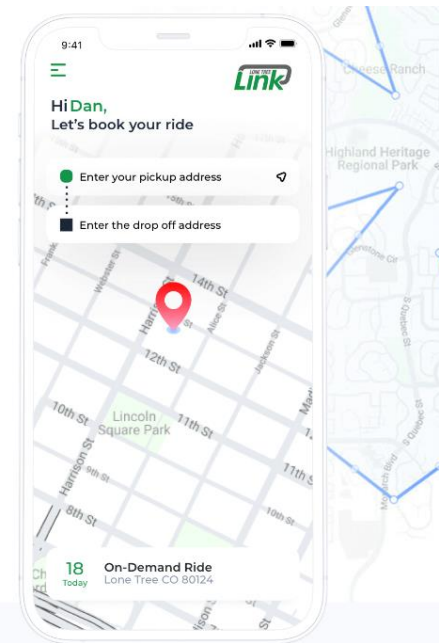
Flex Ride + Micro Transit Operations

- Fares: free to rider
- Service Area: All of Erie
- Service Days: Monday-Friday
- Service Hours: 10 hours day
- 3 Reservation methods
- Curb to Curb Service
- Two and one-way trips

Microtransit

On-Demand Microtransit App

What is Microtransit? Microtransit is a convenient, more efficient way to access public transportation. Also ordered via a ride-hailing app, Microtransit is a viral traffic-reducing alternative to buses and Uber. fieldd's On-Demand Microtransit Software is best-in-class for user experience, customization, and automation.



Flex Ride + Micro Transit Operations

Turnkey service providers will offer:

- Wheelchair accessible vehicle in fleet
- Trained drivers
- Mobile app with phone dispatcher
- Monthly reports on ridership, origins, destinations

Commuting Solutions and North Area Transportation Alliance:

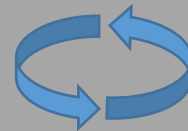
- Launch event support
- Marketing and user support
- Advertise service



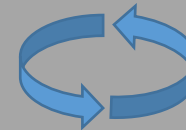
RTD Flex Ride - Current Conditions



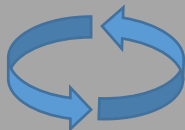
Louisville



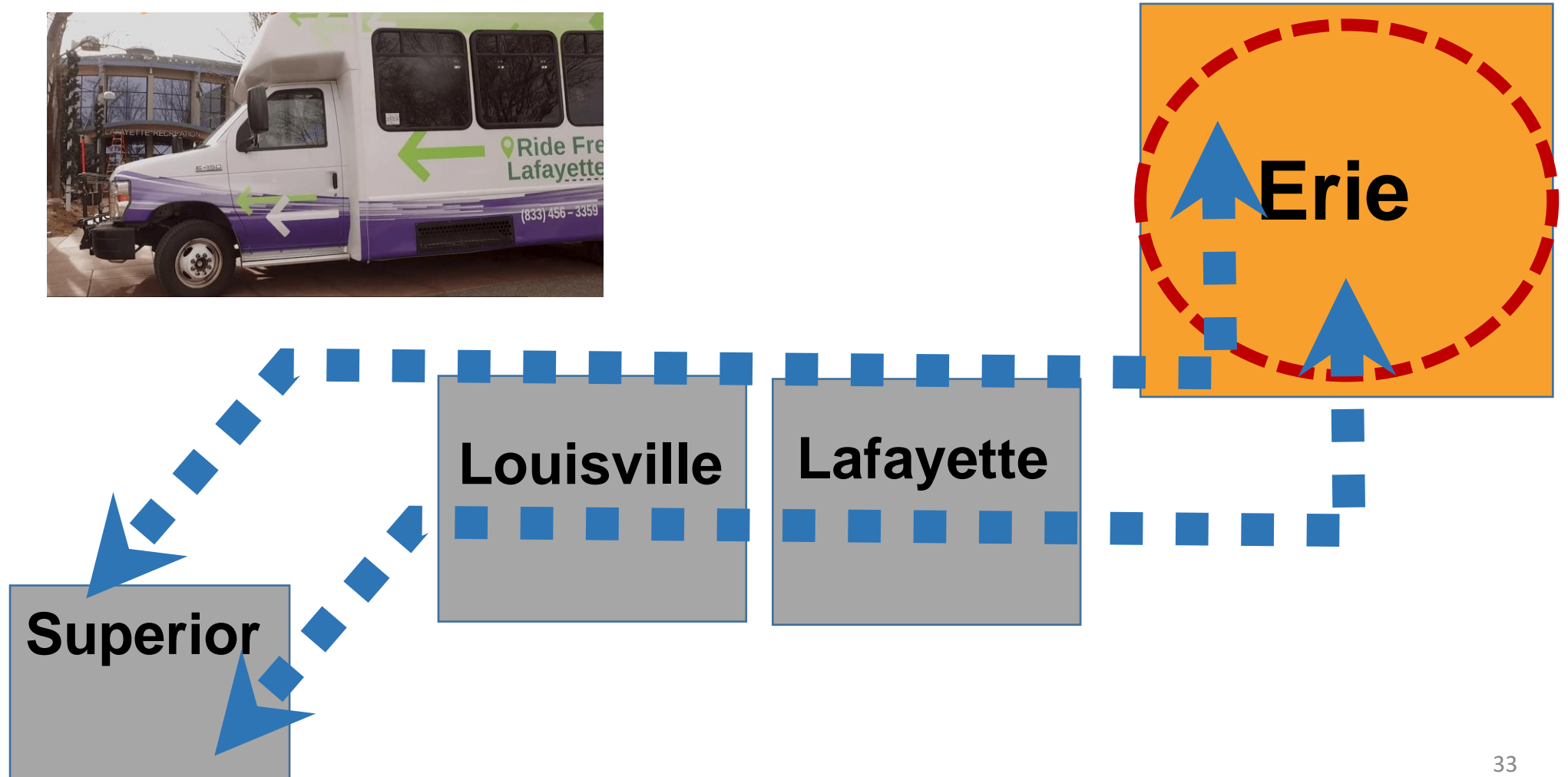
Lafayette



Superior



Boulder County Super Flex



2023 Funding Request

Four Year Transit Funding Plan

September 2023 into December 2024

\$250,000 Town general fund match @ mid-year

\$200,000 HHS grant (available in July)

\$450,000 Total funding for starter pilot service

Jan 2025 to December 2026

\$232,500 Town general fund match spread over 2 years

\$14,200,000 DRCOG grants

\$14,500,000 Total funding for expanded pilot service and CO 7 BRT service

2023 Implementation Schedule

May

- Information sessions with service providers
- Prepare RFP for pilot service providers
- Identify preliminary service plans, branding and other details
- Community outreach (zoom and pop up at ECC)

June

- Revise preliminary service plans and branding
- Community outreach (zoom and pop up ECC)

July/August

- Issue RFP for a service provider
- Select vendor and begin prelaunch activities

September/October Service Launch