

February 2021 Public Works Report

Front Range and Denver Regional Landfill Updates

Waste Connections has notified the Town of Erie that they have begun the Denver Regional Landfill's (DRL) final closure activities. The landfill is located south of County Road 6 and west of County Road 5. Waste Connections has hired Kelly Trucking Inc. to perform capping activities. Work will involve moving fill dirt from its storage location on the southwest side of the landfill to its final placement as the landfill cap. The last step in the closure is the re-grading and applying native grass seeding. Waste Connections is also planning to create a temporary pond on the site to most efficiently apply water where needed to control dust. Waste Connections estimates capping activities may take 6-8 months to complete.

Additionally, Waste Connections is working to bring the southwest edge of the Front Range Landfill (FRL) to its permitted height, which will occur over the next several months. Upon completion this location will also be seeded and should help in shielding view of ongoing operations directly behind that area and currently visible from the south.

The removal of the undefined trash encountered by Western Midstream (WM) recently while installing a pipeline along County Road 5 just east of DRL is being overseen by CDPHE. A Materials Management Plan was submitted by WM which ensures any hazardous material encountered is properly sorted and taken to an acceptable landfill for ultimate disposal.



CDPHE Inspector @ WM Site

Capital Improvement Projects

Lynn R Morgan Water Treatment Facility (WTF) Expansion & Hydroturbine

Construction of the hydroturbine facility continues, with an anticipated start date of summer 2021.

North Water Reclamation Facility (NWRf) Expansion

Construction of this \$30+ Million project is underway, finally! Local eagle advocates raised concerns regarding the proximity of the crane on site to the eagle's pole/perch (not nest). Though not specifically required to by any regulation, we moved the crane. The eagle has now taken up residence on the crane due to its better vantage point for hunting.

Sustainability and Water Conservation



Energy

- The Town was awarded a scholarship for a 1-year membership back in to Xcel Energy's Partners in Energy Alumni program and it will be used to update the 2018 Energy Master Plan. A robust team comprised of Departmental representatives from Parks, Economic Development, Building & Planning, and Sustainability, along with the Chamber, and regional partners such as EnergySmart/PACE, Xcel Energy, and United Power will be a part of this update process.
- Construction is underway for 4 dual-port charging stations in the ECC parking lot. This will bring the total to 5 dual-port charging stations and 20% of the way to 25 charging stations by 2025.
- Tanko's streetlight audit of the Town's streetlights will be completed by the end of February. The Town has entered in to a multi-party rate case with Xcel Energy to determine the costs for purchasing streetlights in Town, negotiations are ongoing and being led by Ken Fellman.

Green Business & HOA Certification Program

- Green Business & HOA Certification Awards are being organized and a ceremony planned for late spring/early summer (COVID-safe).
- Though the purchase of Renewable Energy Credits, Carbon Offsets, and focusing on the core principles of a green business with energy, waste, water, and transportation, Rep Your Water (local fly fishing business) announced in January that they achieved carbon neutrality as a company. To the program's knowledge, this is the first business in Erie to be carbon neutral and a great example for the rest of the businesses in town.

Waste, Recycling, & Composting

- Christmas Tree Recycling diverted over 450 trees, estimated over 2 tons, from the landfill in January. Many more trees were donated to local goat farmers for food.

Water Efficiency

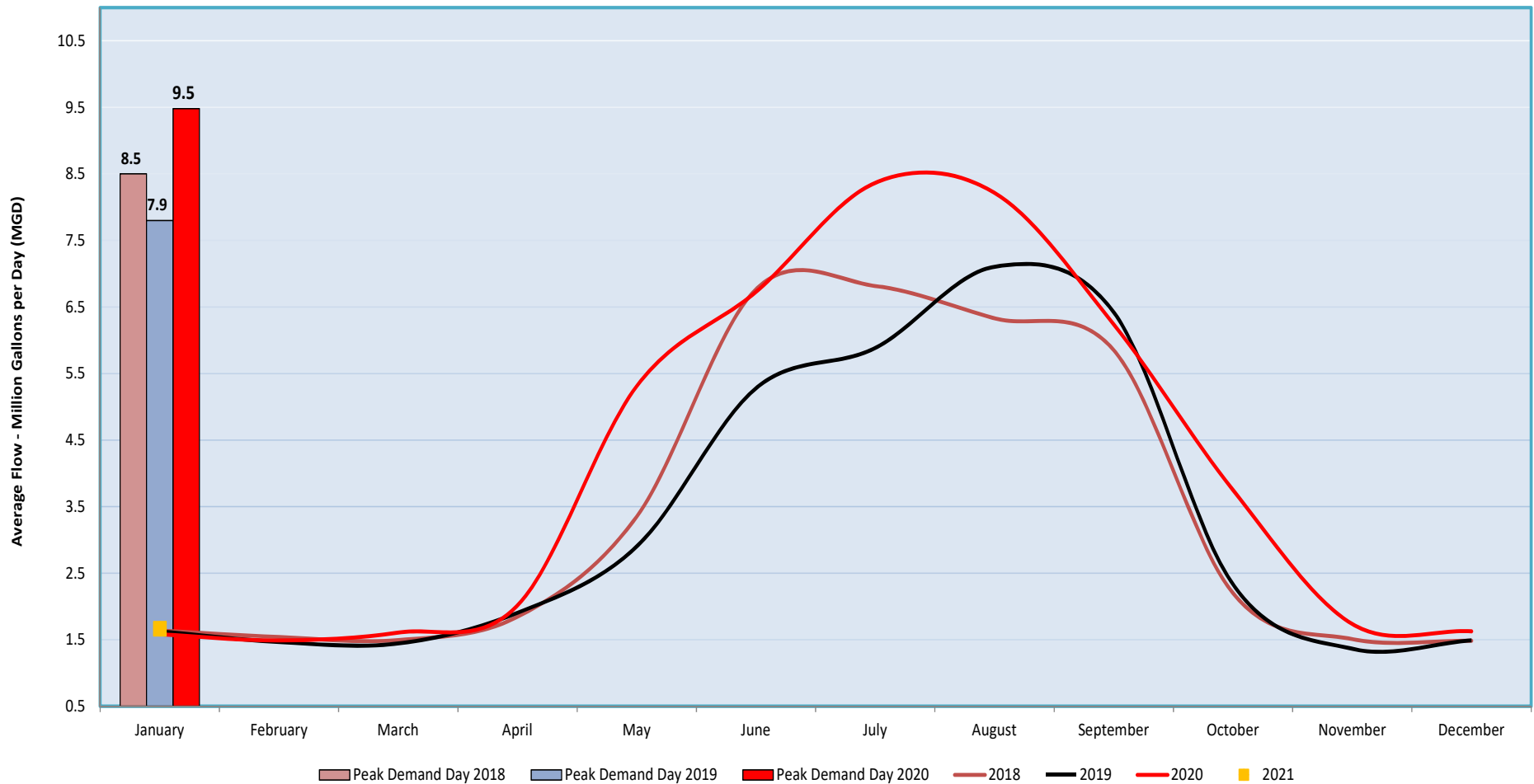
- The Town hired Dylan King as our first Water Conservation Technician. He previously worked at CLEAResult as an Energy Efficiency Lead Technician and before that at Resource Central as their Lead Water Conservation Technician. As the state continues to be in a drought, his efforts to help Erie residents and businesses conserve and use water most efficiently are timely.
- 2021 Water Conservation Rebates are available for residents who would like to replace toilets, washing machines, aerators, showerheads, or install rain barrels and drip irrigation kits.

Lynn R. Morgan Water Treatment Facility (WTF)

Annual Daily Average Flow: 2018 – 3.4 MG 2019 – 3.3 MG 2020 – 4.1 MG

July 2020 maintains the record for the highest monthly average flows at 9.5 MG, while November 2019 had the lowest flows at 1.36 MG. The Town's peak day water demand increased roughly 20% over 2019 with roughly 1.5 billion gallons delivered in total. Local municipalities and water providers are raising a red flag due to concerns regarding an apparent second year of drought, and wildfire impacts in the watershed. It is likely there will need to be regional efforts to encourage, and possibly require, water conservation efforts this spring.

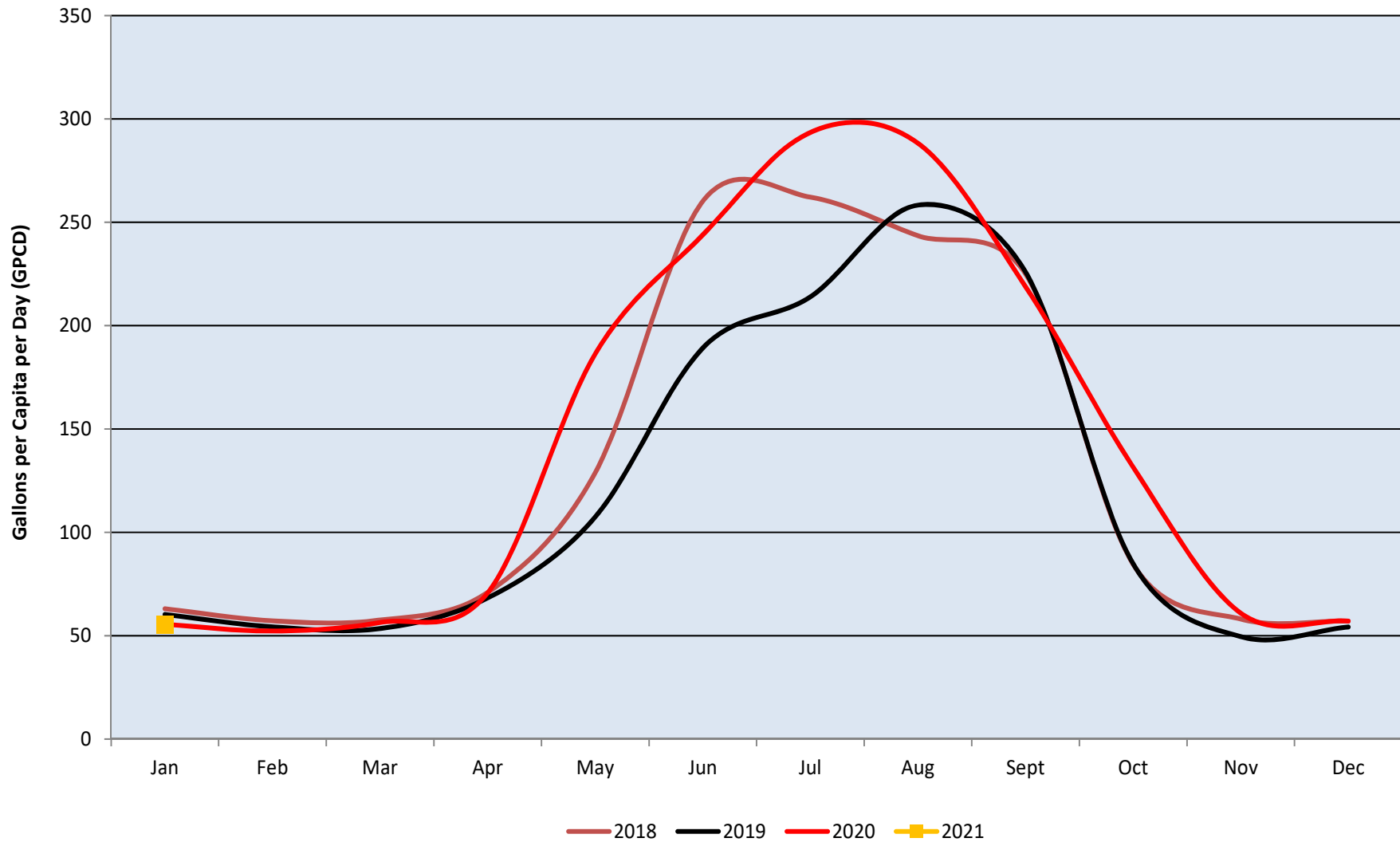
Average Monthly Production



Annual Daily Gallons Per Capita per Day (GPCD): **2018** – 131 GPCD **2019** – 118 GPCD **2020** – 143 GPCD

July 2020 had the highest average daily usage at 294 gallons GPCD. November 2019 had the lowest usage at 50 GPCD. Indoor demands during winter remain relatively stable. Average daily usage took a big jump due to COVID and drought. Reducing summer irrigation and increasing reuse water availability will reduce reliance on treated water supplies in the future.

Average Daily Usage Per Capita



North Water Reclamation Facility

Annual Daily Average Flow:

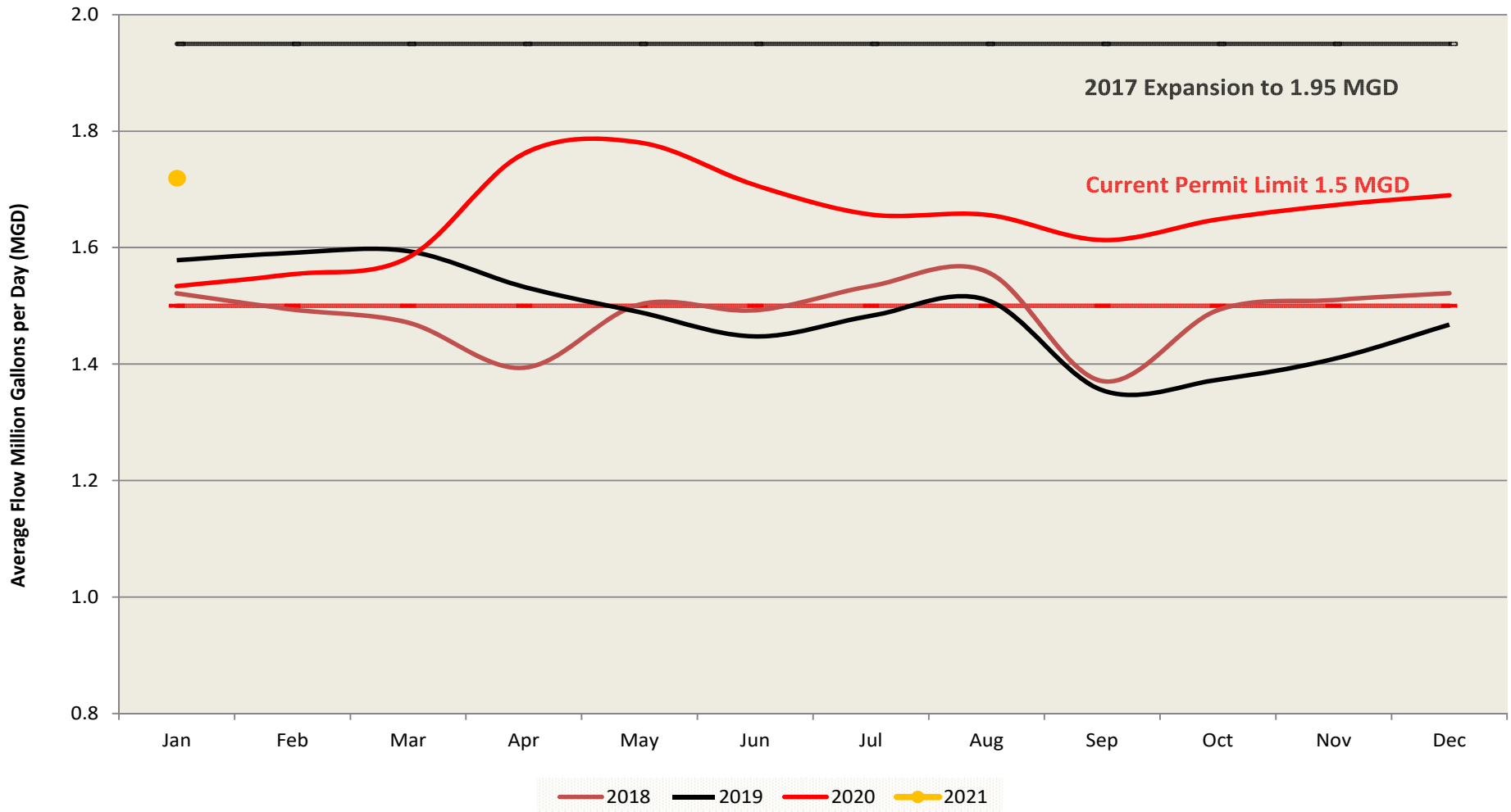
2018 – 1.49 MG

2019 - 1.49 MG

2020 - 1.66 MG

March 2017 had the lowest average flow of 1.29 million gallons per day (MGD). May 2020 set a high average monthly flow of 1.78 MGD. We continue to work through challenges with Colorado Department of Public Health and Environment (CDPHE) and their recent violation notice to the Town. We have had conversations with staff at CDPHE and are aware that they are finally working on our permit renewal (5 years overdue), this could be a chance to get some of these issues corrected. Flows are up significantly, presumably due to COVID and residents working from home.

Average Monthly Flows



Annual Daily Gallons Per Capita per Day (GPCD):

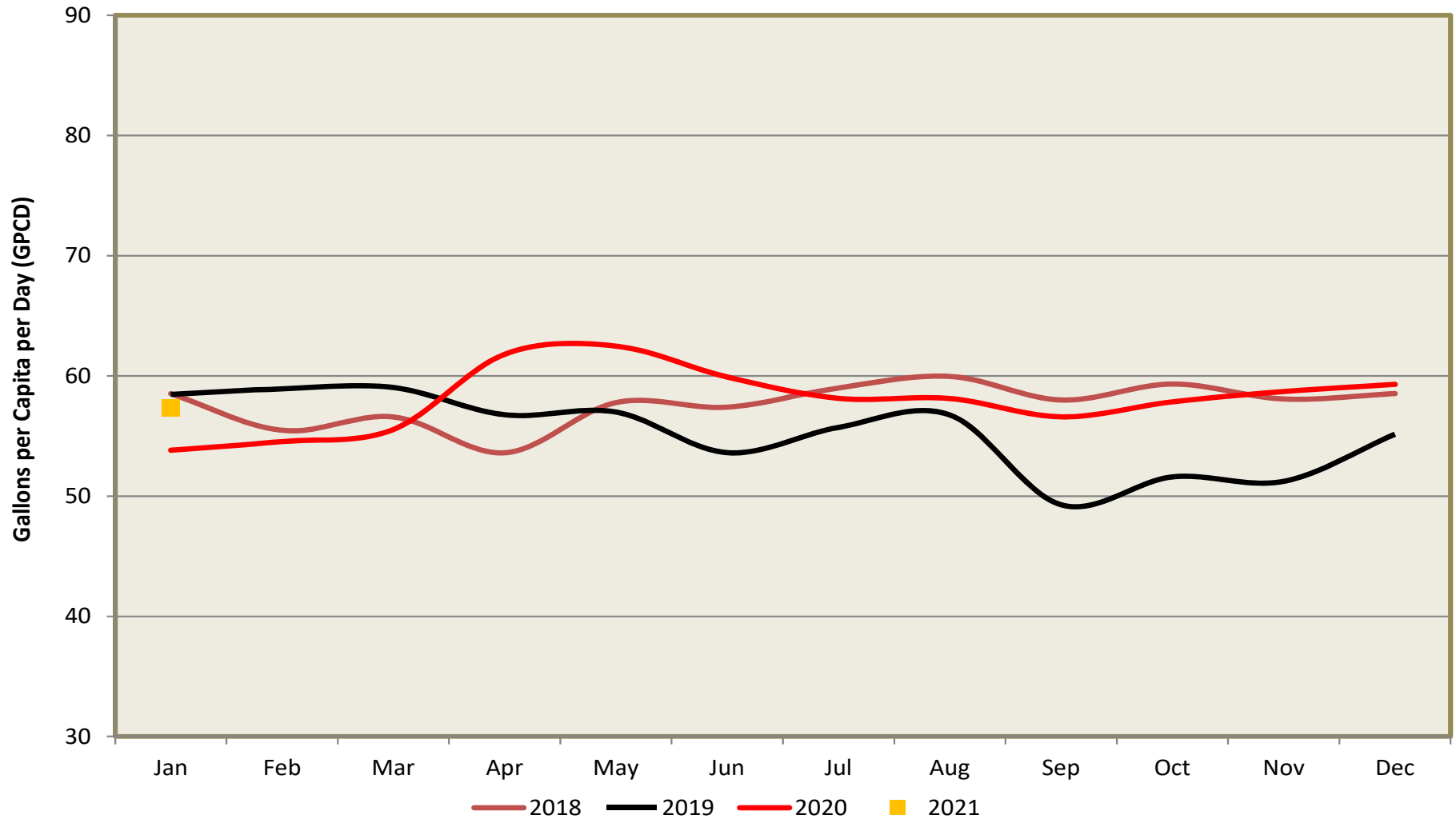
2018 - 58 GPCD

2019 - 55 GPCD

2020 - 58 GPCD

This graph depicts customer indoor water usage. May 2020 had the highest usage at 62 GPCD. September 2019 had the lowest usage at 49 GPCD. Fall, with relatively little precipitation and dropping groundwater levels, is a good indicator of true daily flows.

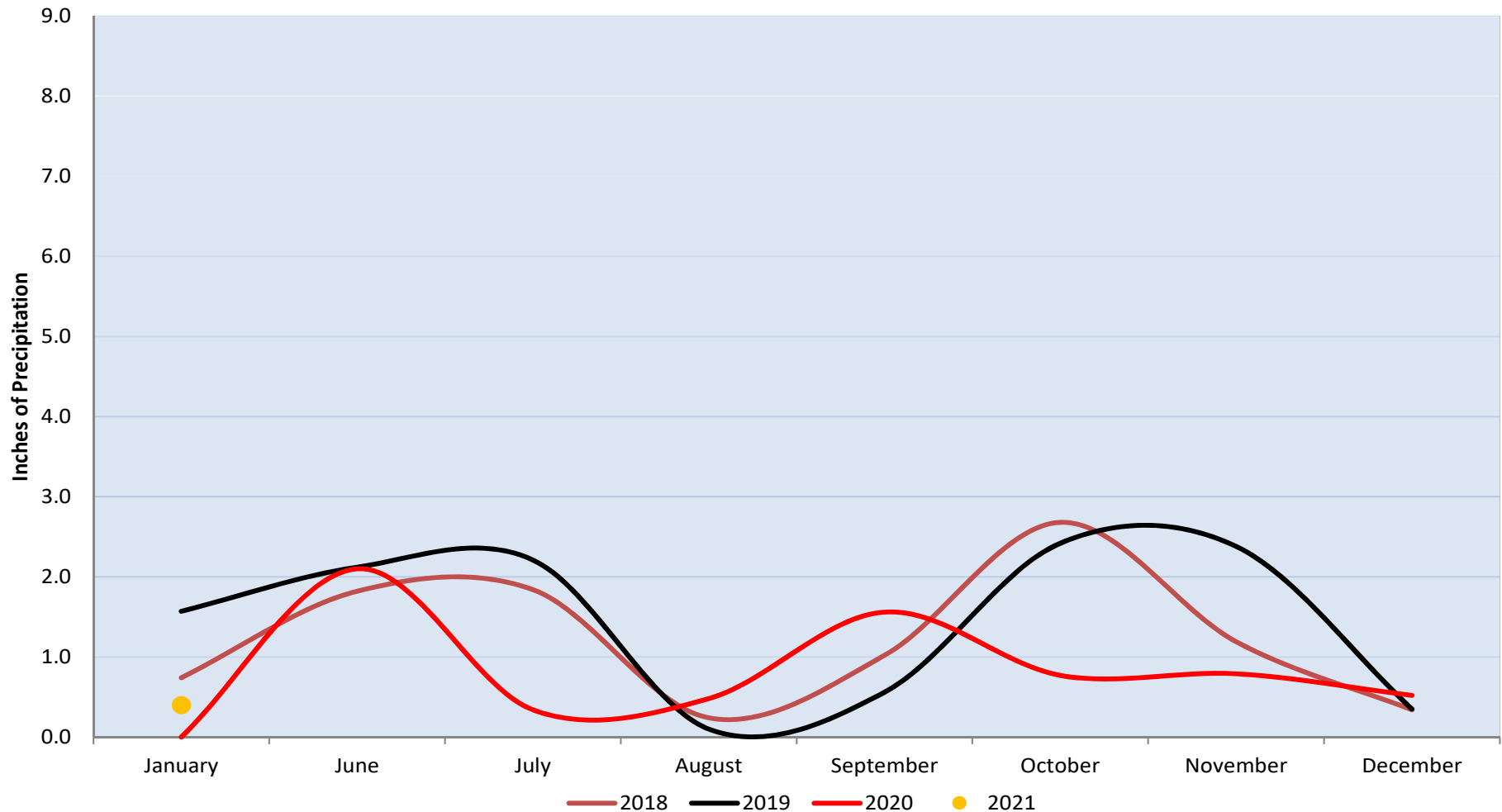
Average Daily Usage Per Capita



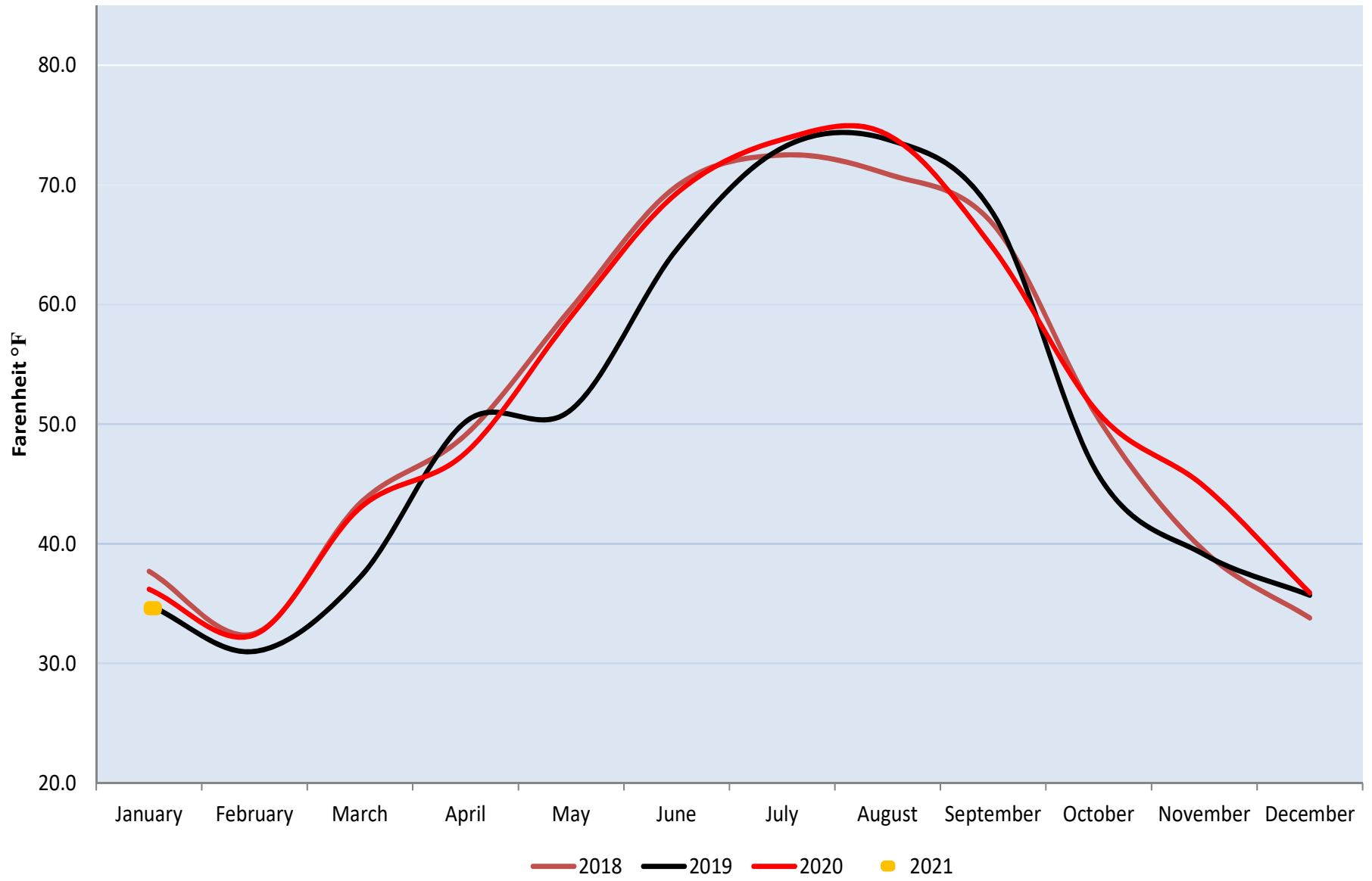
Monthly Data for Boulder – National Oceanic and Atmospheric Administration (NOAA) & Natural Resource Conservation Service (NRCS)

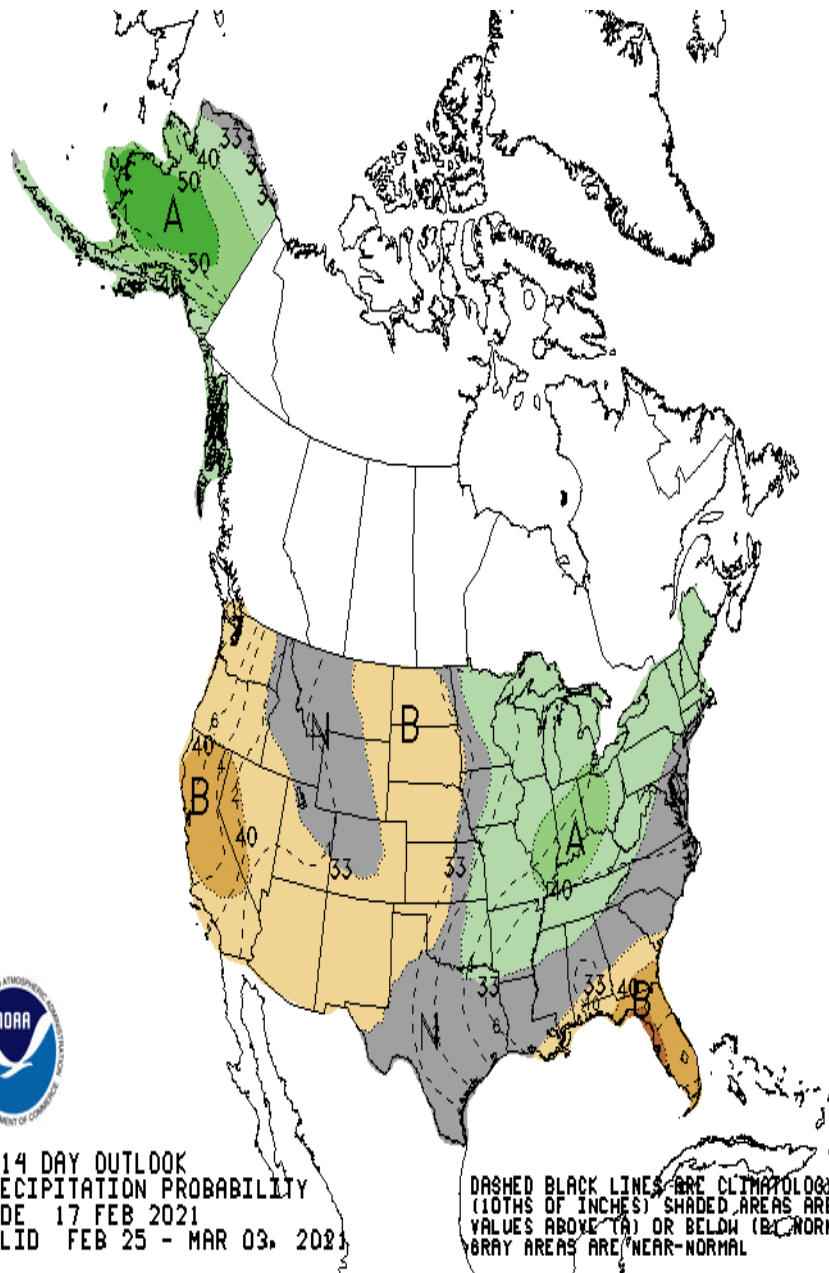
NOAA is predicting a normal precipitation and temperatures through early March. Drought conditions continue to affect the entire state, with our area in severe drought, however Erie is in good shape in terms of water supply as our reservoirs are relatively full, but as previously noted we don't want to squander that supply due to ongoing drought and wildfire impacts. . Snow pack levels this year are not providing much relief, however we have seen a slight recent improvement.

Precipitation



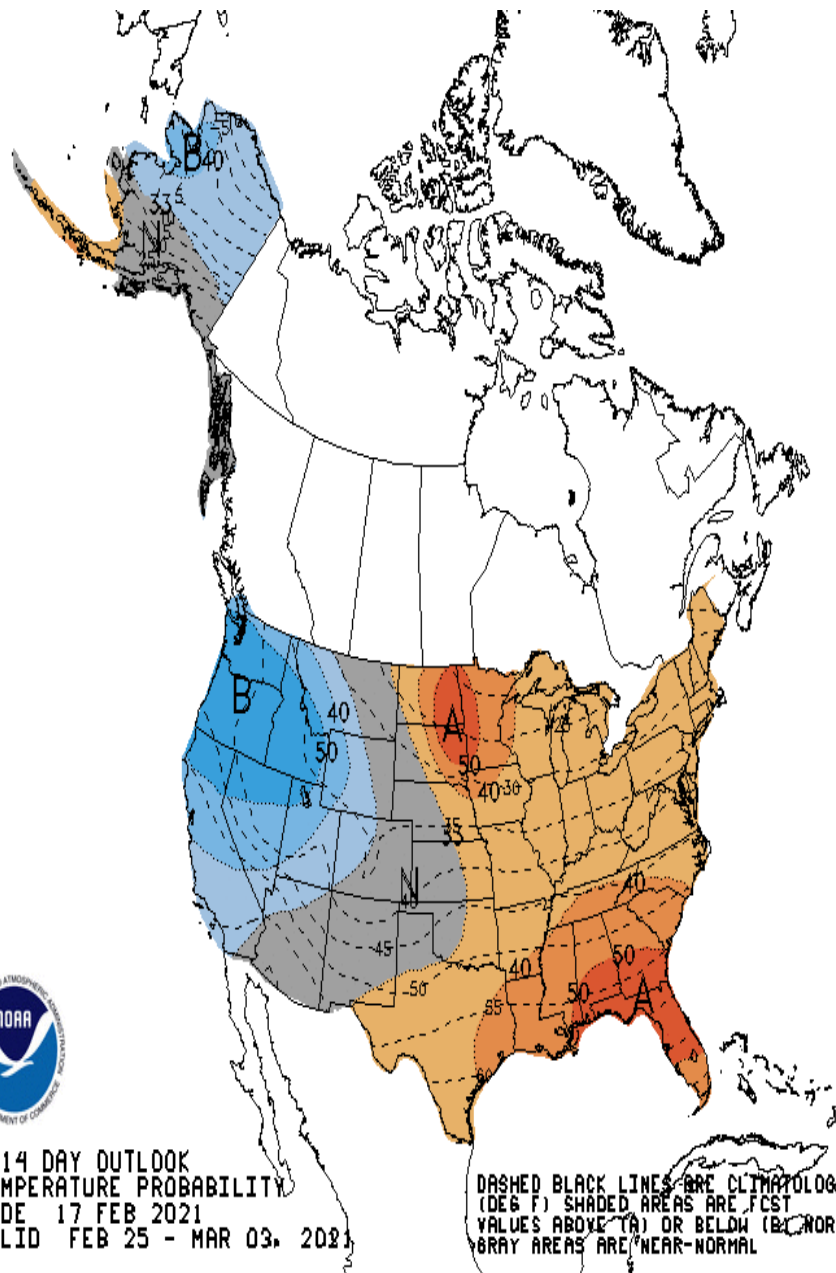
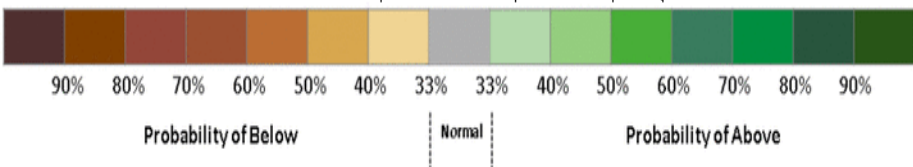
Mean Temperature





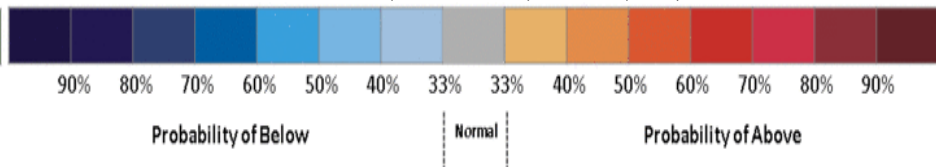
8-14 DAY OUTLOOK
 PRECIPITATION PROBABILITY
 MADE 17 FEB 2021
 VALID FEB 25 - MAR 03, 2021

DASHED BLACK LINES ARE CLIMATOLOGY
 (10THS OF INCHES) SHADED AREAS ARE FCST
 VALUES ABOVE (A) OR BELOW (B) NORMAL
 GRAY AREAS ARE NEAR-NORMAL



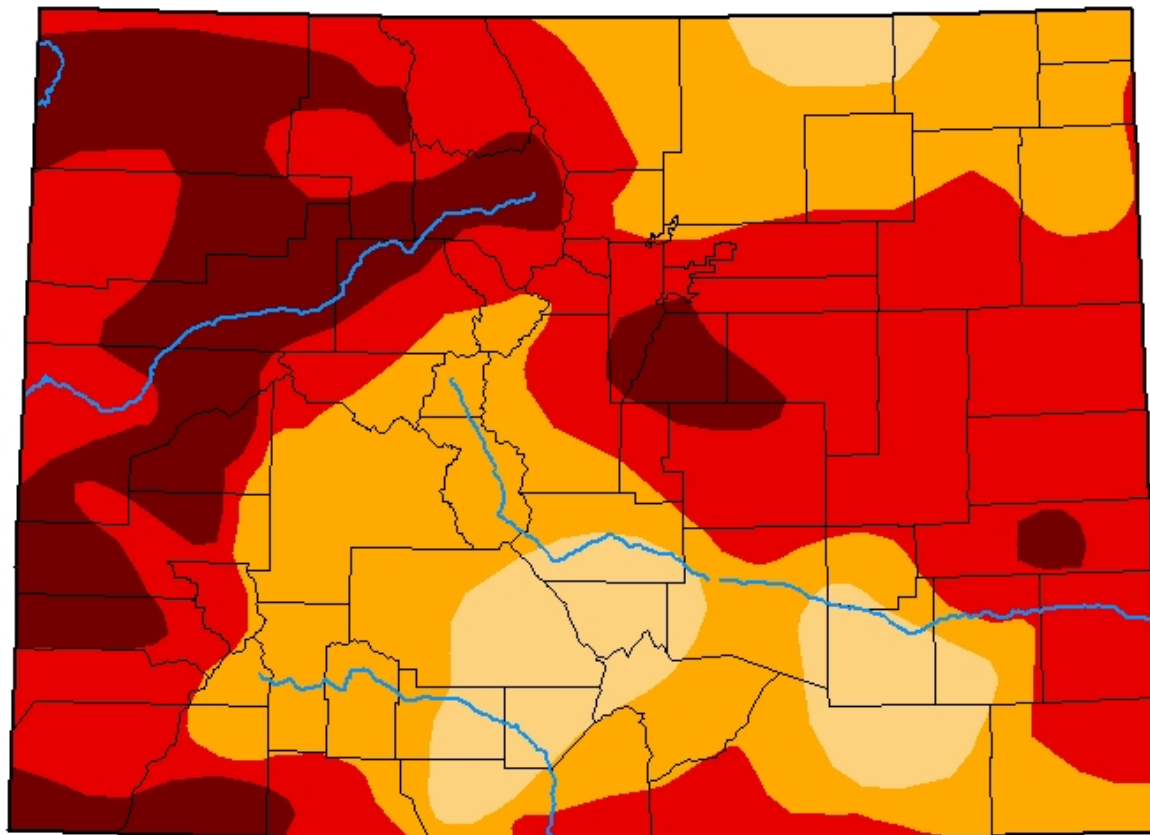
8-14 DAY OUTLOOK
 TEMPERATURE PROBABILITY
 MADE 17 FEB 2021
 VALID FEB 25 - MAR 03, 2021

DASHED BLACK LINES ARE CLIMATOLOGY
 (DEG F) SHADED AREAS ARE FCST
 VALUES ABOVE (A) OR BELOW (B) NORMAL
 GRAY AREAS ARE NEAR-NORMAL









U.S. Drought Monitor Colorado

February 16, 2021
(Released Thursday, Feb. 18, 2021)
Valid 7 a.m. EST



Intensity:

-  None
-  D0 Abnormally Dry
-  D1 Moderate Drought
-  D2 Severe Drought
-  D3 Extreme Drought
-  D4 Exceptional Drought

The Drought Monitor focuses on broad-scale conditions. Local conditions may vary. For more information on the Drought Monitor, go to <https://droughtmonitor.unl.edu/About.aspx>

Author:

David Miskus
NOAA/NWS/NCEP/CPC



droughtmonitor.unl.edu

SNOW WATER EQUIVALENT IN COLORADO HEADWATERS

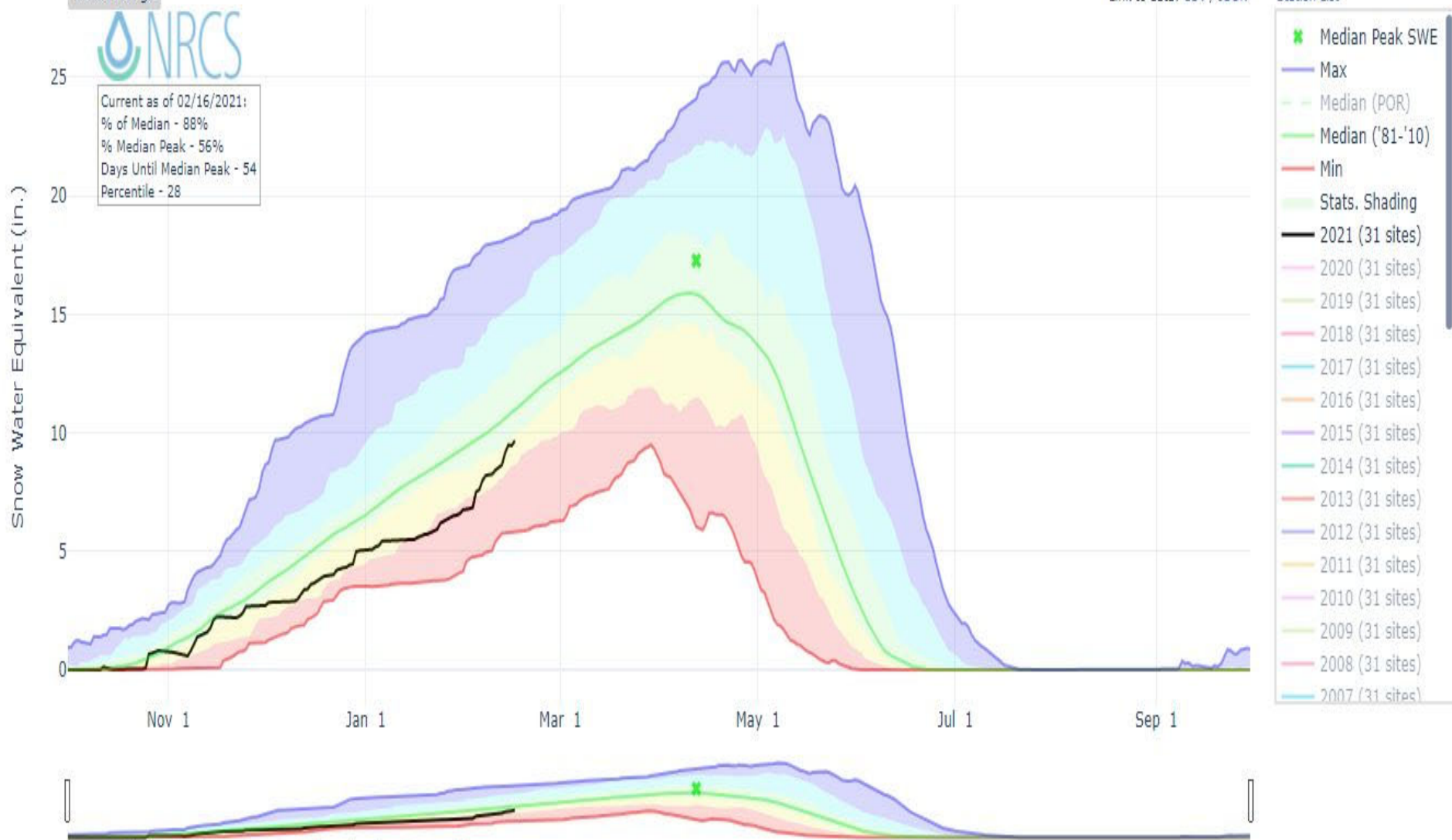
Reset Range

[Link to data: CSV / JSON](#)

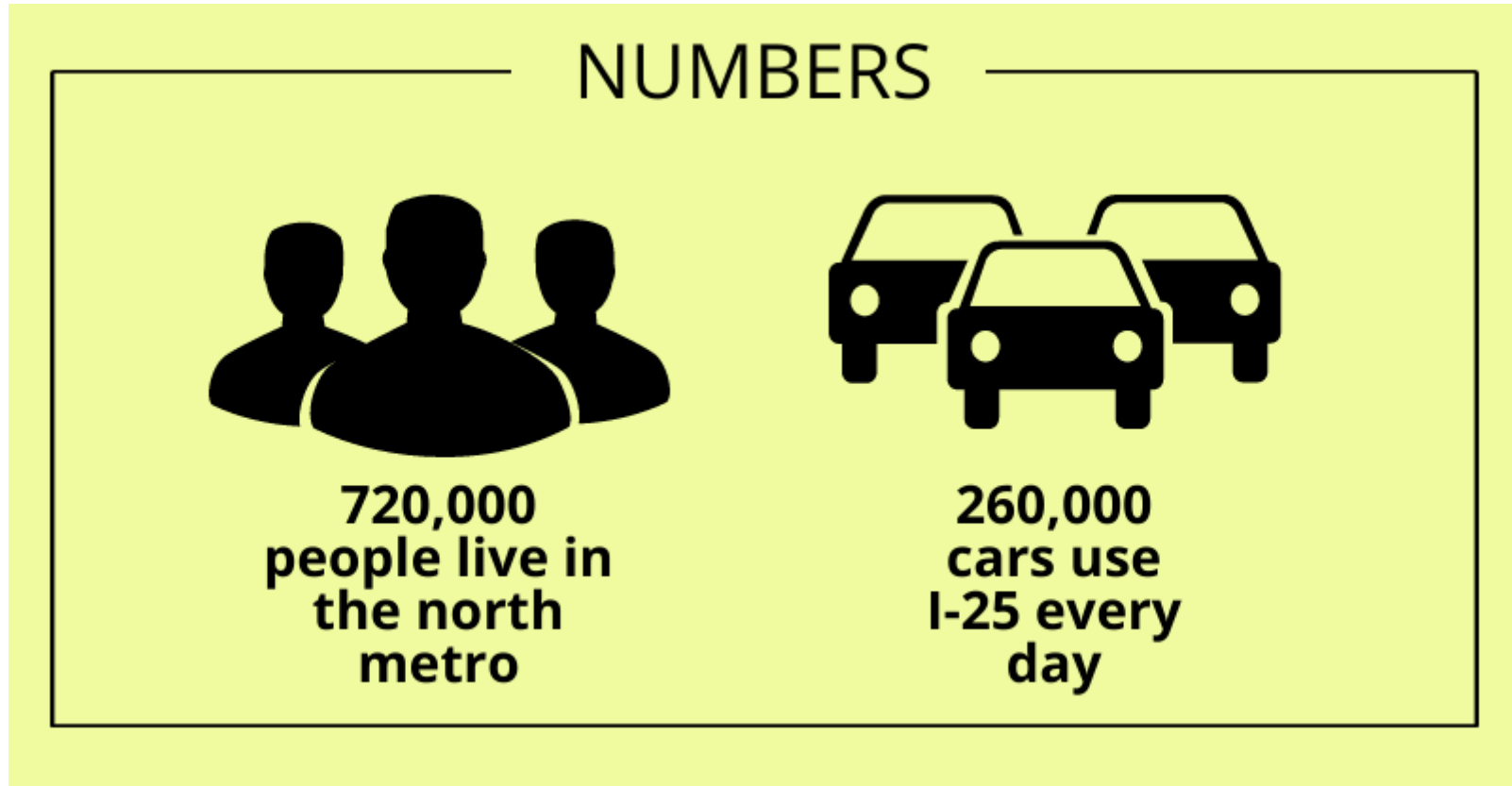
Station List



Current as of 02/16/2021:
 % of Median - 88%
 % Median Peak - 56%
 Days Until Median Peak - 54
 Percentile - 28



Statistical shading breaks at 10th, 30th, 50th, 70th, and 90th Percentiles.
 For more information visit: [30 year normals calculation description.](#)



Various Local Transportation Updates (attached)

- NWMCC Letter to RTD

Northwest Mayors & Commissioners Coalition (MCC)

February 5, 2021

Boulder County

City of Boulder

*City & County of
Broomfield*

City of Lafayette

City of Longmont

City of Louisville

City of Westminster

Town of Erie

Town of Superior

Ms. Debra Johnson
Regional Transportation District (RTD)
General Manager and CEO
1660 Blake Street
Denver, CO 80202

Dear Ms. Johnson:

The Northwest Mayors & Commissioners Coalition (MCC) extends our welcome to Colorado and to the RTD. We appreciate your extensive efforts to meet with and listen to numerous organizations and leaders in the metro area. Thank you for taking the time to meet with the MCC on January 20, we appreciate the opportunity to become acquainted and to discuss the transit issues of importance to our coalition and the RTD.

We value the long-standing partnership between the MCC and RTD board members and staff, as well as our shared success of the US 36 Bus Rapid Transit Flatiron Flyer service and B Line service to Westminster. Ongoing collaboration and partnerships are critical to achieve mutual goals and strengthen the role of transit within the northwest metro region and the metro area to ensure people have access to transportation.

We look forward to working with you, your team, and the Board of Directors on the following items, in particular:

- Working with our local communities to develop strategies and priorities to bring back RTD bus service that has been cut due to COVID-19, as well as grow new service options throughout the region, including Northwest Area Mobility Study (NAMS) corridors.
- Utilizing the FISA account to fund the 30% design requested by the BNSF in order to advance Northwest Rail, including the B Line Peak Service Plan. The MCC also looks forward to exploring future possible collaborations with multiple stakeholders, including Amtrak, to complete the full B Line service in a way that enables improved mobility along the entire Front Range.
- Following through on the commitment to fund SH 119 Bus Rapid Transit (BRT). In 2021, contribute \$5 million in RTD funding to advance the SH 119 BRT design, in partnership with investments

being made by CDOT and local communities.

- Completing remaining FasTracks capital construction investments for US 36 BRT.

We appreciate the RTD Board of Directors has scheduled a Northwest Rail study session next week and we will be participating. We are eager to continue our partnership with the RTD to expedite creative solutions to implement the rail corridor sooner than otherwise planned.

Sincerely,

A handwritten signature in blue ink that reads "Ashley Stolzmann". The signature is written in a cursive style.

Ashley Stolzmann
Mayor, City of Louisville
On behalf of the Northwest MCC

cc: RTD Board of Directors