

TOWN OF ERIE
BOARD OF TRUSTEES AGENDA ITEM
July 9, 2019

SUBJECT: A Resolution Of The Board Of Trustees Of The Town Of Erie Approving A Development Agreement And Dedications For The Coal Creek Properties, 1st Amendment Final Plat

PURPOSE: Board of Trustees acceptance of easement dedications on the Coal Creek Properties, 1st Amendment Final Plat and approval of the Development Agreement

CODE REVIEW: Erie Municipal Code, Title 10

DEPARTMENT: Planning and Development

PRESENTER: Audem Gonzales, Senior Planner

STAFF RECOMMENDATION:

The Planning and Development Director has conditionally approved the Coal Creek Properties, 1st Amendment Final Plat with the following conditions:

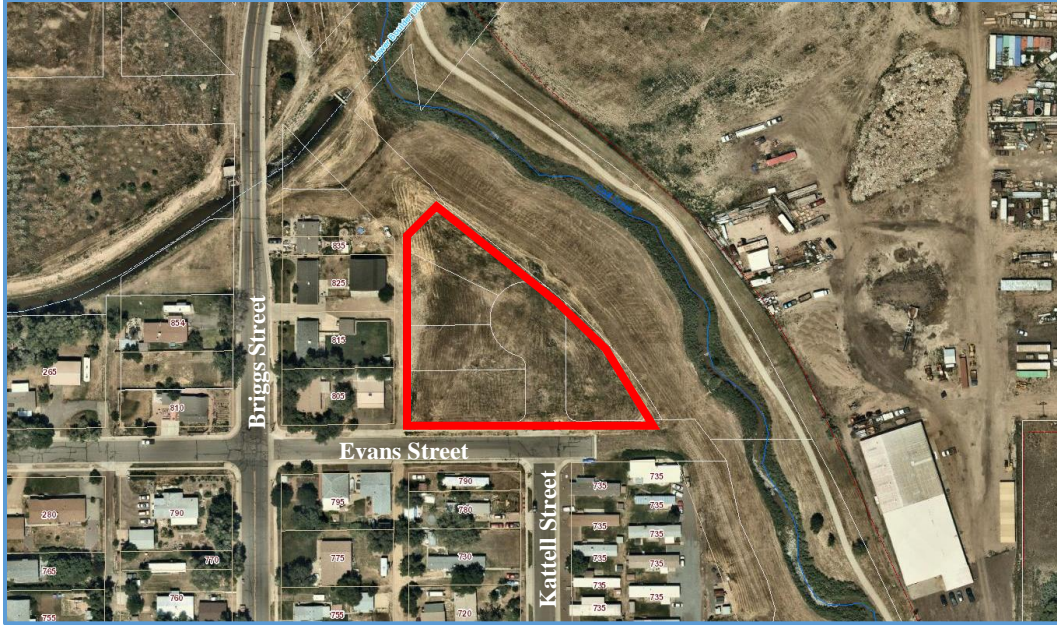
- a. Prior to recordation of the final plat, technical corrections to the plat shall be made to the Town's satisfaction
- b. The Board of Trustees shall approve the associated Development Agreement and accept certain dedications as shown on the final plat.

Staff is recommending the Town Board of Trustees accept all dedications as shown on the Coal Creek Properties, 1st Amendment Final Plat and approve the associated development agreement.

SUMMARY AND BACKGROUND OF SUBJECT MATTER:

Owner: RDJ Construction Inc.
11964 Kenosha Road
Erie, CO 80516

Location: North of the Evans Street and Kattell Street intersection.



Summary:

The Resolution, provided for consideration by the Board of Trustees, accepts dedications on the plat, approves the development agreement and authorizes the appropriate town official to sign the Coal Creek Properties, 1st Amendment Final Plat.

Project Description:

The Coal Creek Properties, 1st Amendment plat proposes adding a levee access and drainage easement along the eastern portion of the subdivision as well as a typical 5 foot drainage easement along the western portion of the subdivision abutting the 20 foot alley.

Site Specific Information:

- Existing Use: Vacant Lots
- Property Size: 1.43 Acres
- Number Of Lots: 5 Lots
- Zoning: Old Town Residential (OTR)

Adjacent Land-Use/Zoning:

	ZONING	LAND USE
NORTH	Public Lands & Institutions (PLI)	Coal Creek and Levee
SOUTH	Old Town Residential (OTR)	Single-Family Homes
EAST	Public Lands & Institutions (PLI)	Coal Creek and Levee
WEST	Old Town Residential (OTR)	Single-Family Homes

Public Notice:

Public Notice is not required.