

HARTRONFT ASSOCIATES
A Professional Corporation
 Planning
 Architecture
 Interior Design
 950 Spruce Street, #2A
 Louisville, CO 80027
 TEL: 303.673.9304
 FAX: 303.673.9319

554 BRIGGS ST
 554 Briggs St., Erie, CO 80516

COPYRIGHT 2021
 All drawn and written information duplicated disclosed or otherwise appearing herein shall not be used without written consent of Hartronft Associates, p.c.

PROJECT # 2121
 DATE 11/08/21
 DRAWN BY: EE
 CHECKED BY: EE
 REVISIONS:

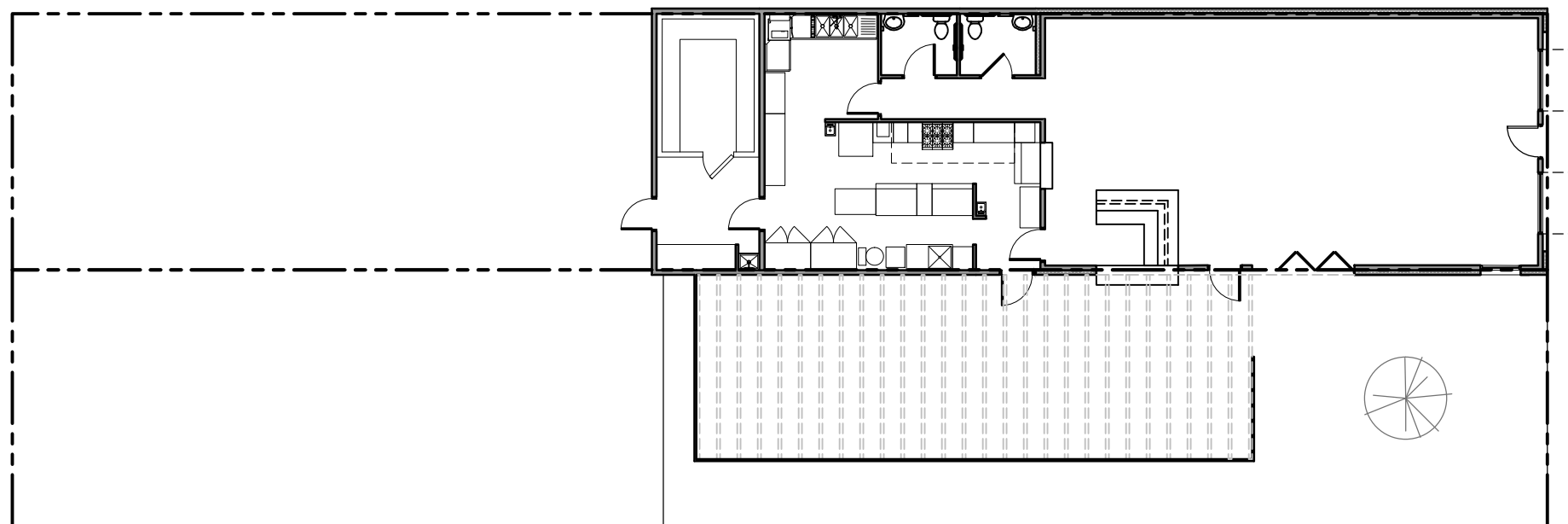
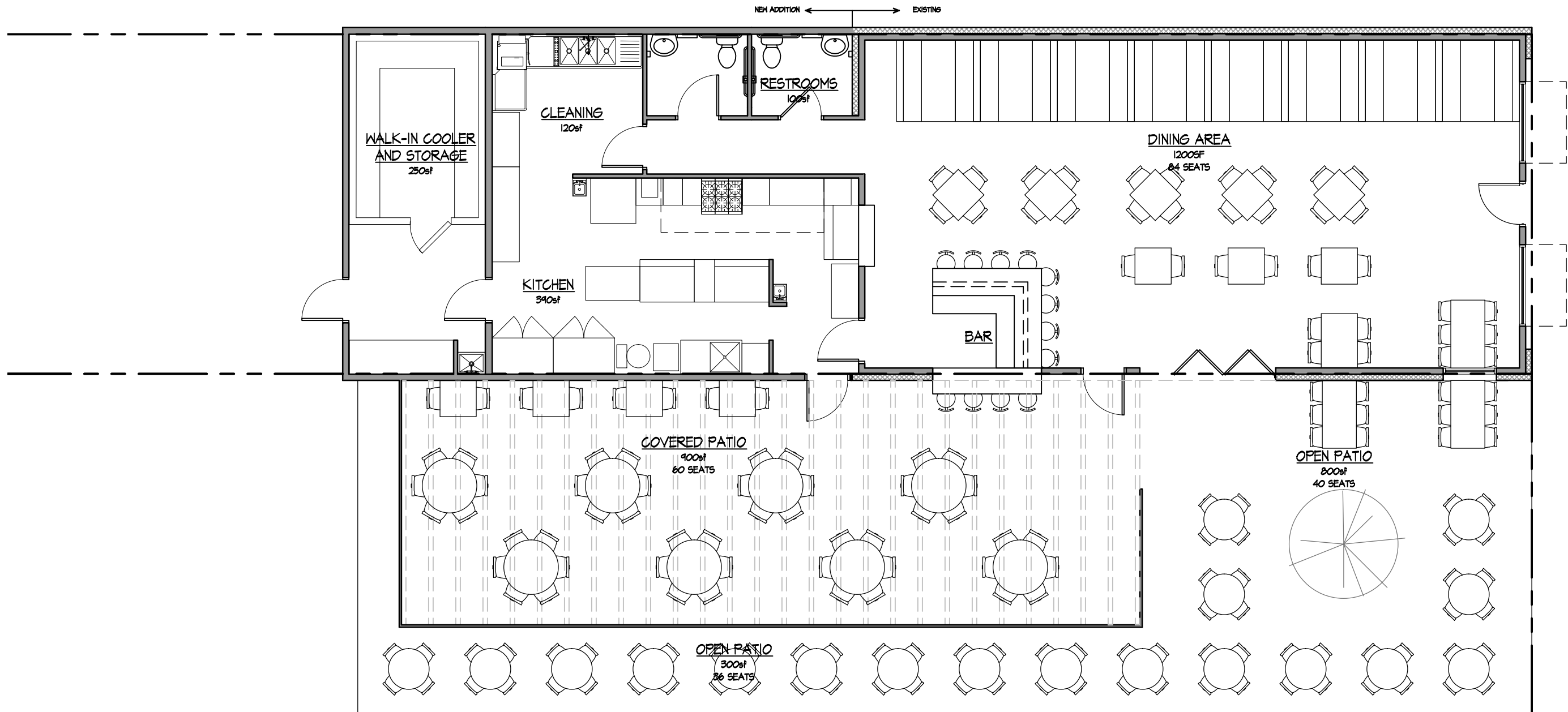
EXISTING KITCHEN - NEW EQUIPMENT

1/4" = 1'-0"



A1

OF



NEW KITCHEN ADDITION

1/8" = 1'-0"

SITE PLAN

1/8" = 1'-0"



HARTRONF ASSOCIATES
A Professional Corporation

Planning
Architecture
Interior Design

950 Spruce Street, #2A
Louisville, CO 80027
TEL: 303.673.9304
FAX: 303.673.9319

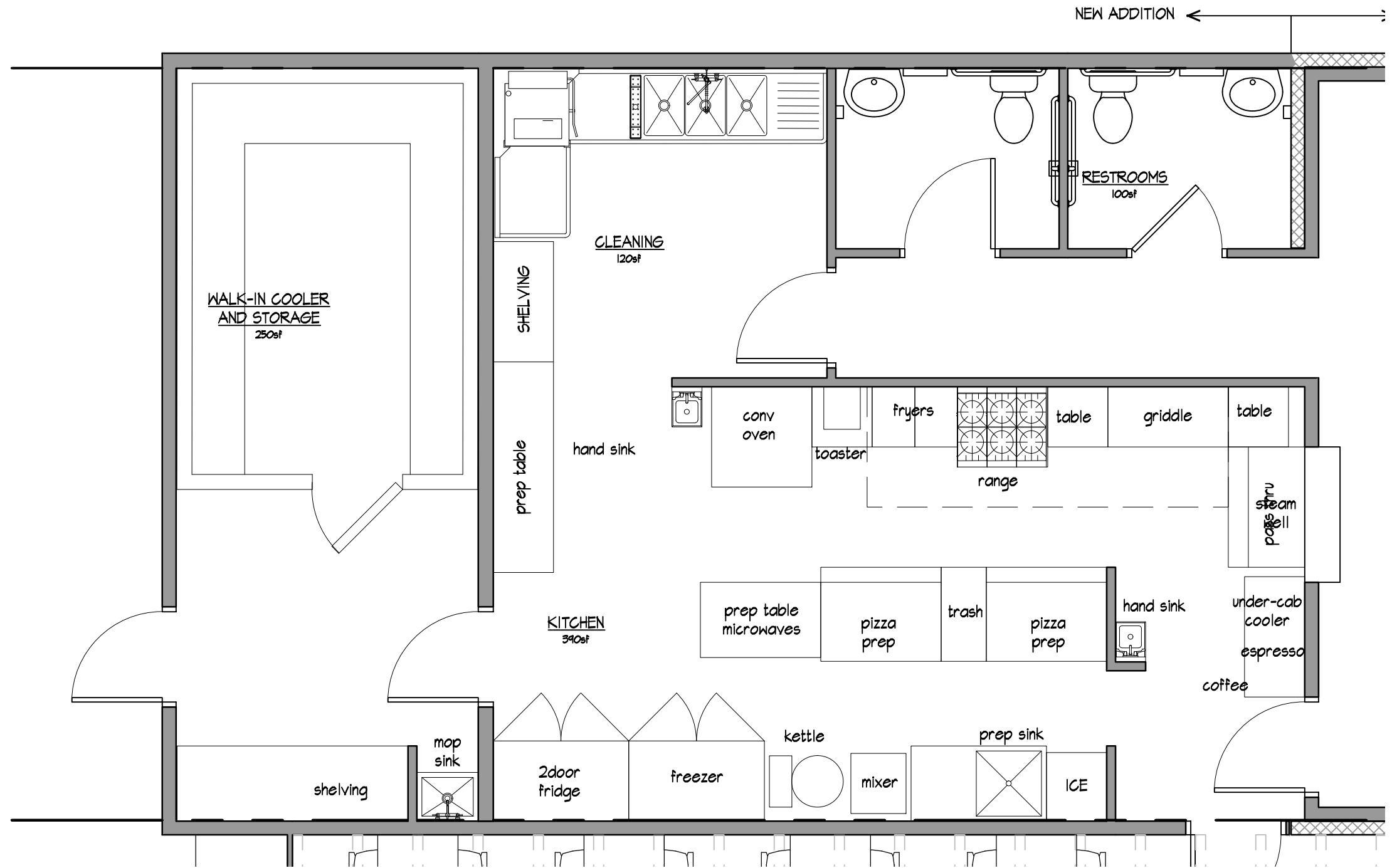
554 BRIGGS ST
554 Briggs St., Erie, CO 80516

COPYRIGHT 2021
All drawn and written information duplicated disclosed or otherwise appearing herein shall not be used without written consent of Hartronf Associates, p.c.

PROJECT # 2121
DATE 11/08/21
DRAWN BY: EE
CHECKED BY: EE
REVISIONS:

A2

OF



HARTRONFT ASSOCIATES
A Professional Corporation

Planning
Architecture
Interior Design

950 Spruce Street, #2A
Louisville, CO 80027
TEL: 303.673.9304
FAX: 303.673.9319

554 BRIGGS ST
554 Briggs St., Erie, CO 80516

COPYRIGHT 2021
All drawn and written information duplicated disclosed or otherwise appearing herein shall not be used without written consent of Hartronft Associates, p.c.

PROJECT # 2121
DATE 11/08/21
DRAWN BY: EE
CHECKED BY: EE
REVISIONS:

KITCHEN EQUIPMENT LAYOUT

1/4" = 1'-0"



A3
OF